



OFFICE OF ECONOMIC OPPORTUNITY

Monthly Employment Report

Jun 18, 2020

Nonfarm Employment Increases by 45,200 Jobs Over the Month Arizona Unemployment Rate Decreases to 8.9%

The Arizona seasonally-adjusted unemployment rate was 8.9% in May 2020, down from 13.4% in April 2020. The U.S. seasonally-adjusted unemployment rate decreased from 14.7% in April to 13.3% in May. Over the month, Arizona's seasonally adjusted labor force increased by 2,795 individuals. Over the year, labor force levels increased by 19,990 individuals or 0.6%.

Over the Month

Arizona Nonfarm employment increased by 45,200 jobs in May. Historically (2010-2019), Nonfarm employment has averaged a loss of 6,800 jobs in May.

The Government Sector recorded a loss of 13,700 jobs in May. The Private Sector recorded a gain of 58,900 jobs in May. Historically (2010-2019), Private Sector employment has averaged a loss of 1,100 jobs in May.

Arizona, U.S. Economic Indicators

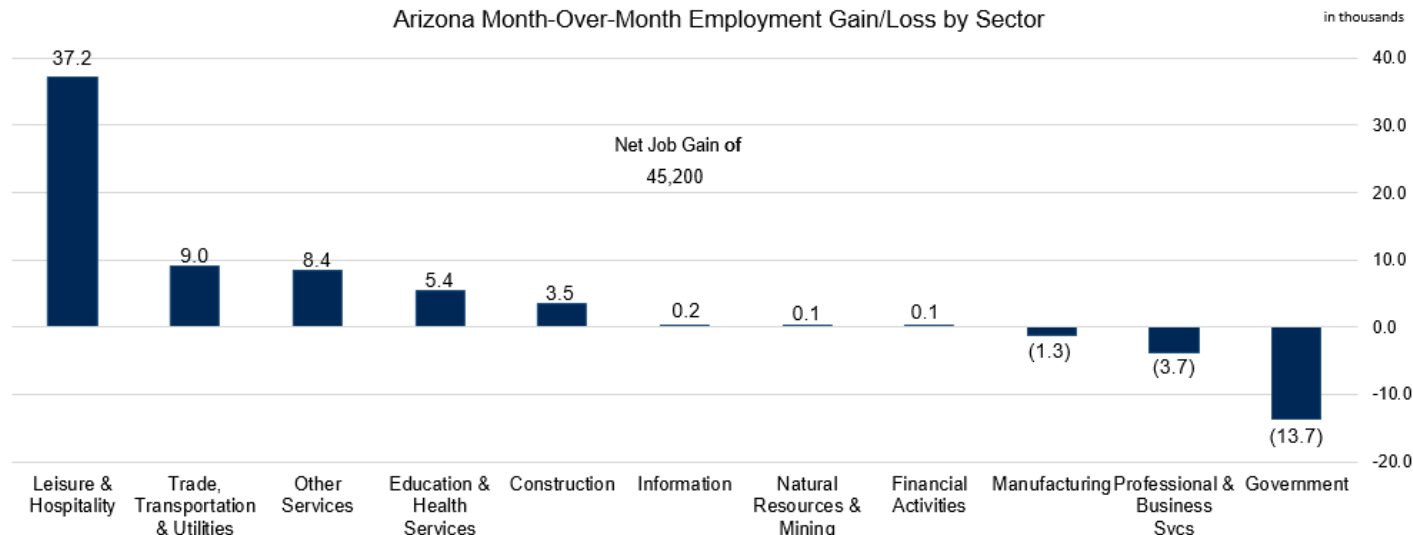
Unemployment Rate (Seasonally Adj.)

| | May '20 | Apr '20 | May '19 |
|-----------------------|---------|---------|---------|
| United States | 13.3% | 14.7% | 3.6% |
| Arizona | 8.9% | 13.4% | 4.8% |
| Arizona (unadj. Rate) | 8.7% | 13.1% | 4.6% |

Arizona Nonfarm Employment (in Thousands)

| | May '20 | Apr '20 | May '19 |
|---------------------|---------|---------|---------|
| Overall | 2,756.5 | 2,711.3 | 2,919.6 |
| Over-Month % Chg. | 1.7% | -9.1% | -0.4% |
| Year-to-Year % Chg. | -5.6% | -7.5% | 2.6% |

Arizona Month-Over-Month Employment Gain/Loss by Sector



Source: Produced by the Arizona Office of Economic Opportunity in cooperation with the U.S. Dept. of Labor, Bureau of Labor Statistics

Private Sector employment gains were reported in the following sector:

- Leisure and Hospitality (37,200 jobs)
- Trade, Transportation and Utilities (9,000 jobs)

- Other Services (8,400 jobs)
- Education and Health Services (5,400 jobs)
- Construction (3,500 jobs)
- Information (200 jobs)
- Natural Resources and Mining (100 jobs)
- Financial Activities (100 jobs)

Private Sector employment losses were reported in the following sectors:

- Professional and Business Services (-3,700 jobs)
- Manufacturing (-1,300 jobs)

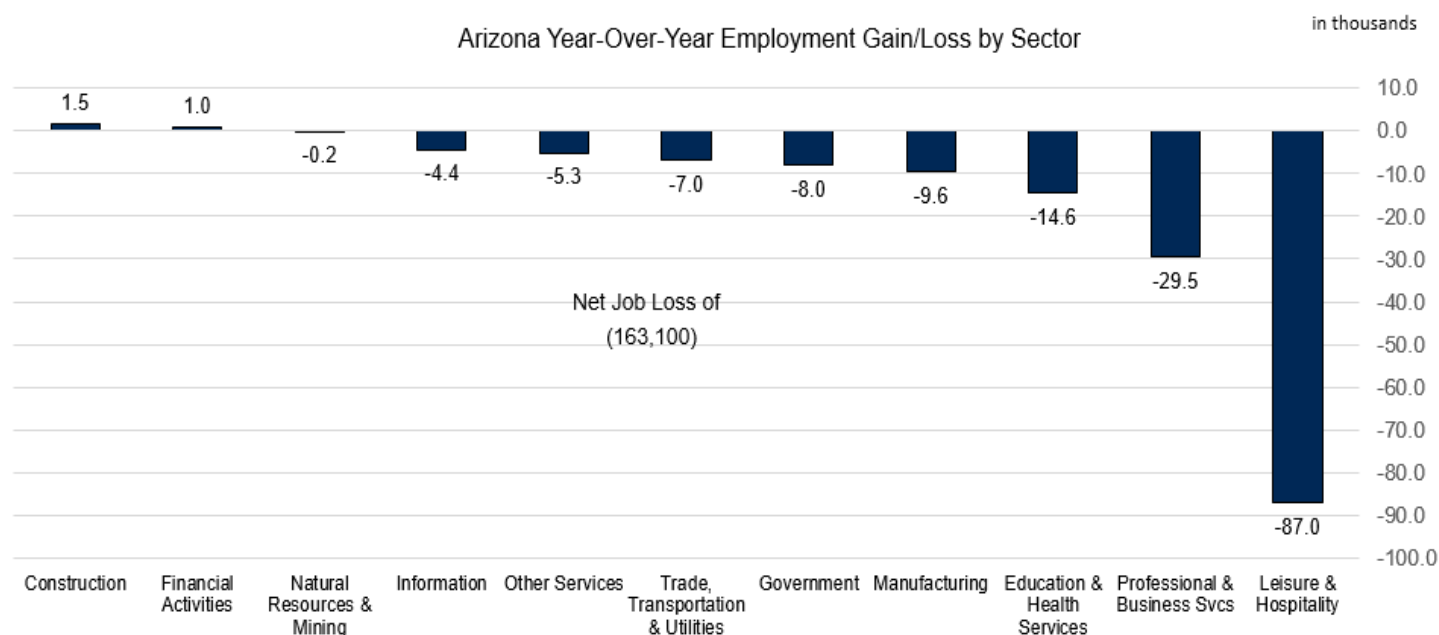
Over the Year

Arizona Nonfarm employment decreased by 163,100 jobs or -5.6% in May. A majority of the losses were recorded in Private Sector employment (-155,100 jobs), while Government recorded losses of 8,000 jobs in May. Gains were reported in:

- Construction (1,500 jobs)
- Financial Activities (1,000 jobs)

Losses were reported in:

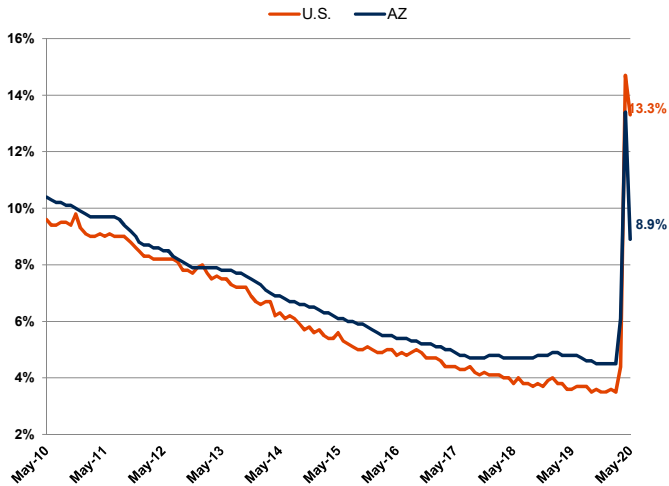
- Leisure and Hospitality (-87,000 jobs)
- Professional and Business Services (-29,500 jobs)
- Education and Health Services (-14,600 jobs)
- Manufacturing (-9,600 jobs)
- Trade, Transportation and Utilities (-7,000 jobs)
- Other Services (-5,300 jobs)
- Information (-4,400 jobs)
- Natural Resources and Mining (-200 jobs)



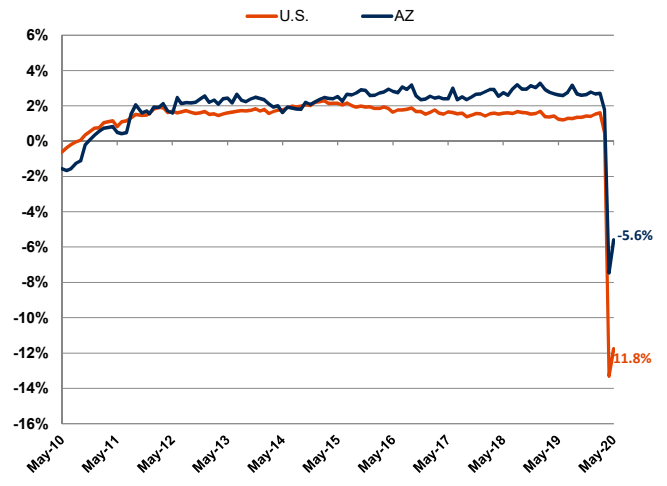
Source: Produced by the Arizona Office of Economic Opportunity in cooperation with the U.S. Dept. of Labor, Bureau of Labor Statistics

LABOR MARKET TRENDS CHARTS

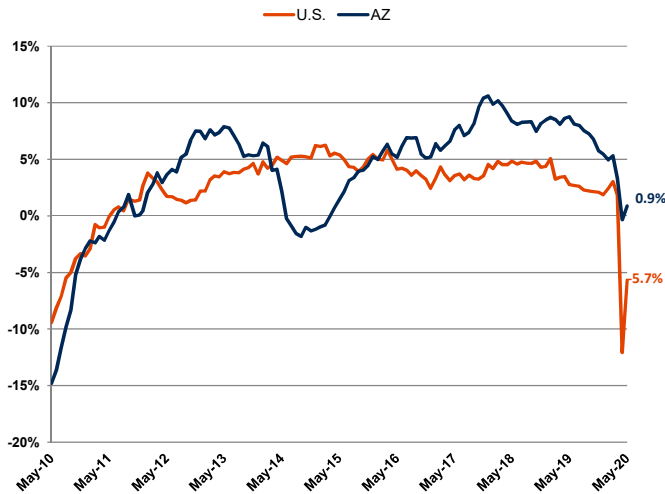
Arizona & U.S. Unemployment Rate
Seasonally Adjusted



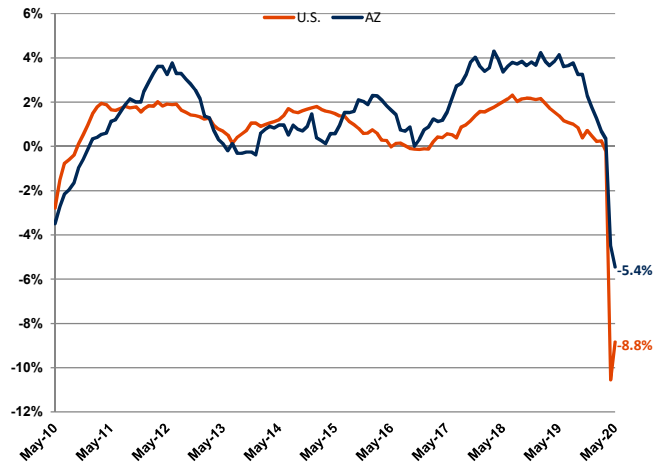
Arizona & U.S. Nonfarm Employment
Year-to-Year Percent Change



Arizona & U.S. Construction Employment
Year-to-Year Percent Change



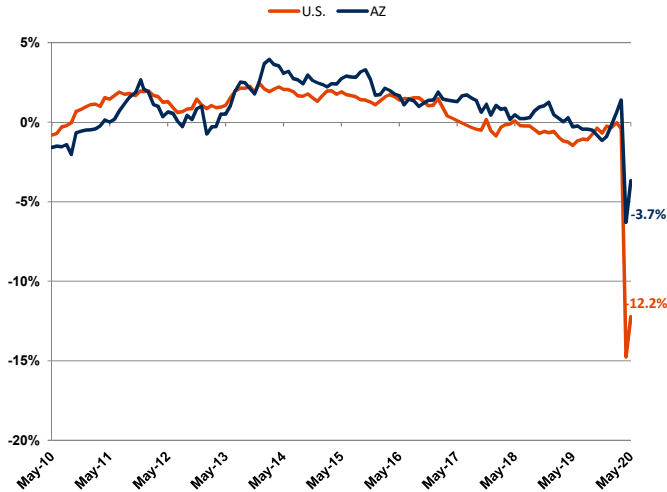
Arizona & U.S. Manufacturing Employment
Year-to-Year Percent Change



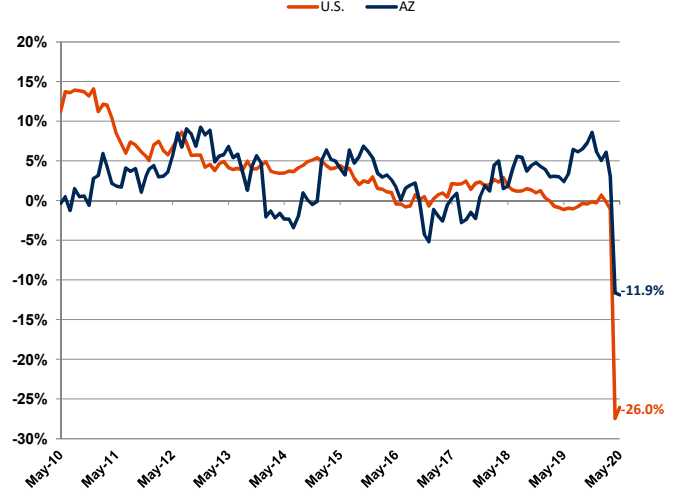
Source: Prepared by the Arizona Office of Economic Opportunity, in cooperation with the U.S. Dept. of Labor, Bureau of Labor Statistics

LABOR MARKET TRENDS CHARTS

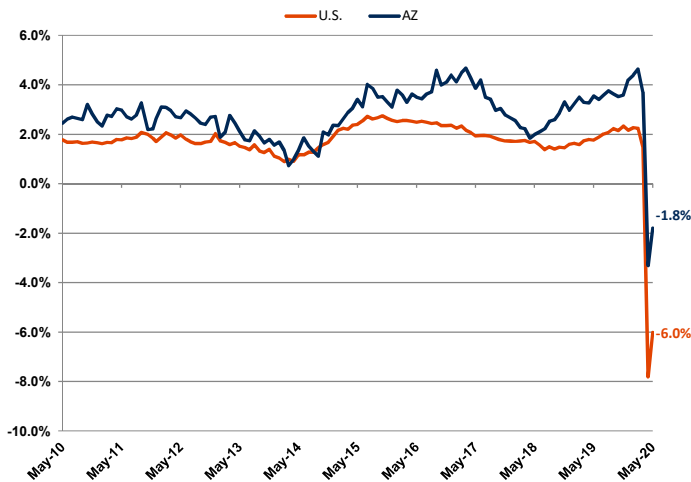
Arizona & U.S. Retail Trade
Year-to-Year Percent Change



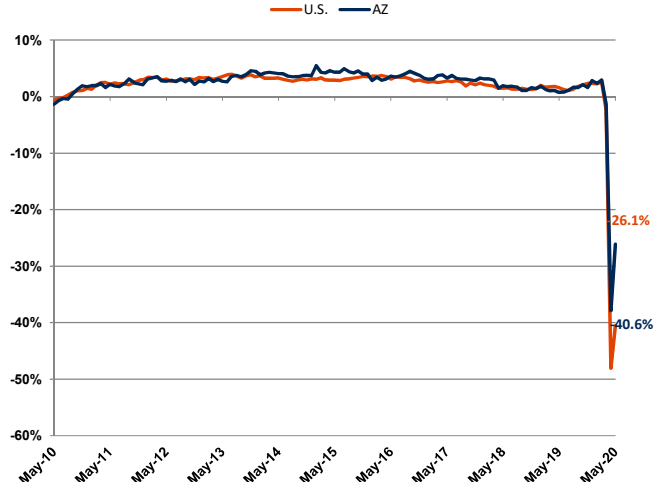
Arizona & U.S. Employment Services
Year-to-Year Percent Change



Arizona & U.S. Health Care
Year-to-Year Percent Change



Arizona & U.S. Leisure & Hospitality
Year-to-Year Percent Change



Source: Prepared by the Arizona Office of Economic Opportunity, in cooperation with the U.S. Dept. of Labor, Bureau of Labor Statistics

Table 1

Labor Force, Employment, Unemployment and Unemployment Rates^(a)

(in Thousands)

| <u>ARIZONA</u> | <u>Monthly/Yearly Change</u> | | | | |
|--|---|---|---|--------------------------------------|------------------------------------|
| | <u>May</u> <u>2020^(c)</u> | <u>April</u> <u>2020^(d)</u> | <u>May</u> <u>2019^(d)</u> | <u>April '20 -</u> <u>May '20</u> | <u>May '19 -</u> <u>May '20</u> |
| Civilian Labor Force ^(e) | 3,535.6 | 3,534.9 | 3,514.7 | 0.7 | 21.0 |
| Unemployment | 309.0 | 464.1 | 161.4 | -155.1 | 147.6 |
| Unemployment Rate | 8.7% | 13.1% | 4.6% | -4.4 | 4.1 |
| Unemployment Rate (Seasonally Adjusted) ^(f) | 8.9% | 13.4% | 4.8% | -4.5 | 4.1 |
| Total Employment | 3,226.6 | 3,070.8 | 3,353.2 | 155.9 | -126.6 |
| <u>FLAGSTAFF MSA (Coconino County)</u> | | | | | |
| Civilian Labor Force ^(e) | 70.4 | 71.7 | 77.0 | -1.3 | -6.6 |
| Unemployment | 8.2 | 12.5 | 3.9 | -4.2 | 4.3 |
| Unemployment Rate (Unadjusted) | 11.7% | 17.4% | 5.0% | -5.7 | 6.7 |
| Total Employment | 62.2 | 59.2 | 73.1 | 2.9 | -10.9 |
| <u>LAKE HAVASU CITY-KINGMAN MSA (Mohave County)</u> | | | | | |
| Civilian Labor Force ^(e) | 86.6 | 86.8 | 87.8 | -0.2 | -1.2 |
| Unemployment | 12.0 | 16.8 | 4.8 | -4.8 | 7.2 |
| Unemployment Rate (Unadjusted) | 13.8% | 19.3% | 5.5% | -5.5 | 8.3 |
| Total Employment | 74.6 | 70.0 | 83.0 | 4.6 | -8.4 |
| <u>PHOENIX-MESA-SCOTTSDALE MSA (Maricopa & Pinal Counties)</u> | | | | | |
| Civilian Labor Force ^(e) | 2,497.6 | 2,491.6 | 2,468.1 | 6.0 | 29.5 |
| Unemployment | 206.2 | 310.5 | 99.0 | -104.3 | 107.2 |
| Unemployment Rate (Unadjusted) | 8.3% | 12.5% | 4.0% | -4.2 | 4.3 |
| Total Employment | 2,291.4 | 2,181.0 | 2,369.1 | 110.3 | -77.8 |
| <u>PRESCOTT MSA (Yavapai County)</u> | | | | | |
| Civilian Labor Force ^(e) | 109.5 | 109.7 | 106.7 | -0.3 | 2.8 |
| Unemployment | 9.3 | 15.5 | 4.6 | -6.3 | 4.7 |
| Unemployment Rate (Unadjusted) | 8.5% | 14.1% | 4.3% | -5.6 | 4.2 |
| Total Employment | 100.2 | 94.2 | 102.1 | 6.0 | -1.9 |
| <u>SIERRA VISTA-DOUGLAS MSA (Cochise County)</u> | | | | | |
| Civilian Labor Force ^(e) | 50.7 | 50.4 | 50.2 | 0.2 | 0.5 |
| Unemployment | 3.7 | 5.6 | 2.7 | -1.9 | 0.9 |
| Unemployment Rate (Unadjusted) | 7.2% | 11.1% | 5.5% | -3.9 | 1.7 |
| Total Employment | 47.0 | 44.9 | 47.4 | 2.2 | -0.4 |

Notes: For notes and source, see end of Table 1

(Continued on next page)

Table 1 (Cont.)

Labor Force, Employment, Unemployment and Unemployment Rates^{(a)(b)}

(in Thousands)

| | Monthly/Yearly Change | | | | |
|-------------------------------------|-----------------------|------------------|----------------|------------------------|----------------------|
| <u>TUCSON MSA (Pima County)</u> | May 2020(c) | April 2020(d) | May 2019(d) | April '20 - May '20 | May '19 - May '20 |
| Civilian Labor Force ^(c) | 500.8 | 497.9 | 497.2 | 2.9 | 3.6 |
| Unemployment | 42.0 | 63.5 | 21.4 | -21.6 | 20.5 |
| Unemployment Rate (Unadjusted) | 8.4% | 12.8% | 4.3% | -4.4 | 4.1 |
| Total Employment | 458.8 | 434.4 | 475.8 | 24.4 | -17.0 |
| | | | | | |
| <u>YUMA MSA (Yuma County)</u> | | | | | |
| Civilian Labor Force ^(e) | 92.5 | 96.9 | 96.7 | -4.4 | -4.3 |
| Unemployment | 16.5 | 23.0 | 16.6 | -6.5 | -0.2 |
| Unemployment Rate (Unadjusted) | 17.8% | 23.7% | 17.2% | -5.9 | 0.6 |
| Total Employment | 76.0 | 73.9 | 80.1 | 2.1 | -4.1 |

Notes: a) Labor force, unemployment, total employment, and unadjusted unemployment rates are produced by the Local Area Unemployment Statistics (LAUS) program in the Arizona Office of Employment and Population Statistics, in cooperation with the U.S. Dept. of Labor, Bureau of Labor Statistics (BLS). BLS data used as part of the input in producing LAUS data come from the monthly Household Survey, produced by the Census Bureau for the U.S. Department of Labor, Bureau of Labor Statistics.

For more information on the LAUS program, visit this website: <http://www.bls.gov/lau/laufaq.htm>

c) Preliminary

d) Revised

e) Adjusted to Current Population Survey (CPS 2017) to reflect place of residence

f) Normal seasonal variations have been eliminated to reflect underlying trends

MSA - Metropolitan Statistical Area

NA - Not Available

Source: Prepared by the Arizona Office of Economic Opportunity, in cooperation with the U.S. Dept. of Labor, Bureau of Labor Statistics

Table 2

Nonfarm Payroll Employment

(in Thousands, Not Seasonally Adjusted)

| ARIZONA ^(a) | | | | Amount Change | | Percent Change | |
|--|----------------|------------------|----------------|------------------------|----------------------|------------------------|----------------------|
| | May 2020(b) | April 2020(c) | May 2019(c) | Monthly | Over-Year | Monthly | Over-Year |
| | | | | April '20 - May '20 | May '19 - May '20 | April '20 - May '20 | May '19 - May '20 |
| Total Nonfarm Payroll Employment^{(c)(d)} | 2,756.5 | 2,711.3 | 2,919.6 | 45.2 | -163.1 | 1.7% | -5.6% |
| Private Sector | 2,339.2 | 2,280.3 | 2,494.3 | 58.9 | -155.1 | 2.6% | -6.2% |
| Government | 417.3 | 431.0 | 425.3 | -13.7 | -8.0 | -3.2% | -1.9% |
| Goods-Producing Industries | 351.4 | 349.1 | 359.7 | 2.3 | -8.3 | 0.7% | -2.3% |
| Manufacturing | 166.6 | 167.9 | 176.2 | -1.3 | -9.6 | -0.8% | -5.4% |
| Durable Goods | 125.5 | 126.5 | 132.8 | -1.0 | -7.3 | -0.8% | -5.5% |
| Fabricated Metal | 20.2 | 20.2 | 20.6 | 0.0 | -0.4 | 0.0% | -1.9% |
| Computer and Electronic Parts | 34.2 | 34.3 | 32.4 | -0.1 | 1.8 | -0.3% | 5.6% |
| Aerospace Products and Parts | 30.2 | 29.6 | 30.4 | 0.6 | -0.2 | 2.0% | -0.7% |
| Nondurable Goods | 41.1 | 41.4 | 43.4 | -0.3 | -2.3 | -0.7% | -5.3% |
| Natural Resources and Mining | 13.1 | 13.0 | 13.3 | 0.1 | -0.2 | 0.8% | -1.5% |
| Metal Ore Mining | 11.4 | 11.4 | 11.1 | 0.0 | 0.3 | 0.0% | 2.7% |
| Construction | 171.7 | 168.2 | 170.2 | 3.5 | 1.5 | 2.1% | 0.9% |
| Buildings | 35.0 | 34.4 | 34.6 | 0.6 | 0.4 | 1.7% | 1.2% |
| Heavy | 21.5 | 21.0 | 20.0 | 0.5 | 1.5 | 2.4% | 7.5% |
| Specialty Trades | 115.2 | 112.8 | 115.6 | 2.4 | -0.4 | 2.1% | -0.3% |
| Service-Providing Industries | 2,405.1 | 2,362.2 | 2,559.9 | 42.9 | -154.8 | 1.8% | -6.0% |
| Private Service Providing | 1,987.8 | 1,931.2 | 2,134.6 | 56.6 | -146.8 | 2.9% | -6.9% |
| Trade, Transportation and Utilities | 528.2 | 519.2 | 535.2 | 9.0 | -7.0 | 1.7% | -1.3% |
| Trade | 413.2 | 404.2 | 419.6 | 9.0 | -6.4 | 2.2% | -1.5% |
| Wholesale Trade | 103.7 | 102.1 | 98.3 | 1.6 | 5.4 | 1.6% | 5.5% |
| Retail Trade | 309.5 | 302.1 | 321.3 | 7.4 | -11.8 | 2.4% | -3.7% |
| Motor Vehicles and Parts | 45.8 | 45.2 | 47.8 | 0.6 | -2.0 | 1.3% | -4.2% |
| Furniture and Home Furnishings | 6.1 | 5.2 | 9.8 | 0.9 | -3.7 | 17.3% | -37.8% |
| Building Material, Garden Suppl | 28.4 | 27.5 | 26.8 | 0.9 | 1.6 | 3.3% | 6.0% |
| Food and Beverage | 60.8 | 60.8 | 59.3 | 0.0 | 1.5 | 0.0% | 2.5% |
| Clothing and Accessories | 8.7 | 7.9 | 19.8 | 0.8 | -11.1 | 10.1% | -56.1% |
| General Merchandise | 64.1 | 61.3 | 62.5 | 2.8 | 1.6 | 4.6% | 2.6% |
| Department Stores | 19.6 | 18.3 | 22.1 | 1.3 | -2.5 | 7.1% | -11.3% |
| Other General merchand | 44.5 | 43.0 | 40.4 | 1.5 | 4.1 | 3.5% | 10.1% |
| Transp., Warehousing, and Utilities | 115.0 | 115.0 | 115.6 | 0.0 | -0.6 | 0.0% | -0.5% |
| Utilities | 12.6 | 12.6 | 12.0 | 0.0 | 0.6 | 0.0% | 5.0% |
| Transportation and Warehousing | 102.4 | 102.4 | 103.6 | 0.0 | -1.2 | 0.0% | -1.2% |
| Truck Transportation | 23.7 | 24.0 | 23.5 | -0.3 | 0.2 | -1.3% | 0.9% |
| Information | 44.4 | 44.2 | 48.8 | 0.2 | -4.4 | 0.5% | -9.0% |
| Telecommunications | 14.8 | 14.9 | 15.5 | -0.1 | -0.7 | -0.7% | -4.5% |
| Financial Activities | 229.2 | 229.1 | 228.2 | 0.1 | 1.0 | 0.0% | 0.4% |
| Finance and Insurance | 176.1 | 175.1 | 172.5 | 1.0 | 3.6 | 0.6% | 2.1% |
| Credit Intermediation., Monetary Auth. | 92.0 | 91.3 | 88.3 | 0.7 | 3.7 | 0.8% | 4.2% |
| Financial Investments and Vehicles | 20.5 | 20.3 | 20.4 | 0.2 | 0.1 | 1.0% | 0.5% |
| Insurance Carriers | 63.6 | 63.5 | 63.8 | 0.1 | -0.2 | 0.2% | -0.3% |
| Real Estate and Rental and Leasing | 53.1 | 54.0 | 55.7 | -0.9 | -2.6 | -1.7% | -4.7% |
| Professional and Business Services | 406.8 | 410.5 | 436.3 | -3.7 | -29.5 | -0.9% | -6.8% |
| Professional, Scientific and Technical Service | 151.3 | 157.7 | 156.5 | -6.4 | -5.2 | -4.1% | -3.3% |
| Management of Companies and Enterprises | 29.7 | 30.2 | 29.8 | -0.5 | -0.1 | -1.7% | -0.3% |
| Administrative and Waste Services | 225.8 | 222.6 | 250.0 | 3.2 | -24.2 | 1.4% | -9.7% |
| Employment Services | 90.6 | 90.7 | 102.8 | -0.1 | -12.2 | -0.1% | -11.9% |
| Business Support Services | 36.1 | 35.4 | 39.9 | 0.7 | -3.8 | 2.0% | -9.5% |
| Services to Buildings and Dwellings | 42.3 | 41.4 | 45.5 | 0.9 | -3.2 | 2.2% | -7.0% |
| Education and Health Services | 443.6 | 438.2 | 458.2 | 5.4 | -14.6 | 1.2% | -3.2% |
| Educational Services | 64.0 | 65.6 | 67.9 | -1.6 | -3.9 | -2.4% | -5.7% |
| Health Care and Social Assistance | 379.6 | 372.6 | 390.3 | 7.0 | -10.7 | 1.9% | -2.7% |
| Health Care | 321.4 | 315.0 | 327.3 | 6.4 | -5.9 | 2.0% | -1.8% |
| Ambulatory Health Care Services | 166.1 | 157.7 | 170.2 | 8.4 | -4.1 | 5.3% | -2.4% |
| Hospitals | 98.3 | 99.7 | 99.1 | -1.4 | -0.8 | -1.4% | -0.8% |
| Nursing and Residential Care Facilities | 57.0 | 57.6 | 58.0 | -0.6 | -1.0 | -1.0% | -1.7% |
| Social Assistance | 58.2 | 57.6 | 63.0 | 0.6 | -4.8 | 1.0% | -7.6% |
| Leisure and Hospitality | 246.0 | 208.8 | 333.0 | 37.2 | -87.0 | 17.8% | -26.1% |
| Arts, Entertainment and Recreation | 24.8 | 23.8 | 45.8 | 1.0 | -21.0 | 4.2% | -45.9% |
| Accommodation and Food Services | 221.2 | 185.0 | 287.2 | 36.2 | -66.0 | 19.6% | -23.0% |
| Accommodation | 23.8 | 30.3 | 45.9 | -6.5 | -22.1 | -21.5% | -48.1% |
| Food Services and Drinking Places | 197.4 | 154.7 | 241.3 | 42.7 | -43.9 | 27.6% | -18.2% |
| Other Services (except Public Administration) | 89.6 | 81.2 | 94.9 | 8.4 | -5.3 | 10.3% | -5.6% |
| Government | 417.3 | 431.0 | 425.3 | -13.7 | -8.0 | -3.2% | -1.9% |
| Federal Government | 58.1 | 58.1 | 56.5 | 0.0 | 1.6 | 0.0% | 2.8% |
| State Government | 94.7 | 98.9 | 87.4 | -4.2 | 7.3 | -4.2% | 8.4% |
| State Government Education | 57.3 | 61.3 | 51.0 | -4.0 | 6.3 | -6.5% | 12.4% |
| Other State Government | 37.4 | 37.6 | 36.4 | -0.2 | 1.0 | -0.5% | 2.7% |
| Local Government | 264.5 | 274.0 | 281.4 | -9.5 | -16.9 | -3.5% | -6.0% |
| Local Government Education | 134.0 | 141.3 | 146.7 | -7.3 | -12.7 | -5.2% | -8.7% |
| Other Local Government | 130.5 | 132.7 | 134.7 | -2.2 | -4.2 | -1.7% | -3.1% |

Note: For notes and source, see end of Table 2

Table 2 (Cont.)

Nonfarm Payroll Employment

(in Thousands, Not Seasonally Adjusted)

| PHOENIX-MESA-SCOTTSDALE MSA ¹ | May 2020(b) | April 2020(c) | May 2019(c) | Amount Change | | Percent Change | |
|---|----------------|------------------|----------------|------------------------|----------------------|------------------------|----------------------|
| | | | | Monthly | Over-Year | Monthly | Over-Year |
| | | | | April '20 - May '20 | May '19 - May '20 | April '20 - May '20 | May '19 - May '20 |
| Total Nonfarm Payroll Employment^{***} | 2,047.4 | 2,017.0 | 2,158.4 | 30.4 | -111.0 | 1.5% | -5.1% |
| Private Sector | 1,805.9 | 1,765.8 | 1,913.9 | 40.1 | -108.0 | 2.3% | -5.6% |
| Government | 241.5 | 251.2 | 244.5 | -9.7 | -3.0 | -3.9% | -1.2% |
| Goods-Producing Industries | 263.7 | 263.9 | 269.5 | -0.2 | -5.8 | -0.1% | -2.2% |
| Manufacturing | 125.8 | 126.3 | 132.2 | -0.5 | -6.4 | -0.4% | -4.8% |
| Durable Goods | 91.5 | 92.1 | 96.9 | -0.6 | -5.4 | -0.7% | -5.6% |
| Computer and Electronic Parts | 30.4 | 30.4 | 28.5 | 0.0 | 1.9 | 0.0% | 6.7% |
| Aerospace Products and Parts | 16.3 | 16.0 | 16.5 | 0.3 | -0.2 | 1.9% | -1.2% |
| Nondurable Goods | 34.3 | 34.2 | 35.3 | 0.1 | -1.0 | 0.3% | -2.8% |
| Natural Resources and Mining | 3.7 | 3.6 | 3.5 | 0.1 | 0.2 | 2.8% | 5.7% |
| Construction | 134.2 | 134.0 | 133.8 | 0.2 | 0.4 | 0.1% | 0.3% |
| Buildings | 28.5 | 28.3 | 27.0 | 0.2 | 1.5 | 0.7% | 5.6% |
| Heavy | 16.8 | 16.7 | 15.8 | 0.1 | 1.0 | 0.6% | 6.3% |
| Specialty Trades | 88.9 | 89.0 | 91.0 | -0.1 | -2.1 | -0.1% | -2.3% |
| Service-Providing Industries | 1,783.7 | 1,753.1 | 1,888.9 | 30.6 | -105.2 | 1.7% | -5.6% |
| Private Service Providing | 1,542.2 | 1,501.9 | 1,644.4 | 40.3 | -102.2 | 2.7% | -6.2% |
| Trade, Transportation and Utilities | 399.4 | 392.0 | 401.8 | 7.4 | -2.4 | 1.9% | -0.6% |
| Trade | 309.8 | 301.2 | 312.6 | 8.6 | -2.8 | 2.9% | -0.9% |
| Wholesale Trade | 87.3 | 85.7 | 82.4 | 1.6 | 4.9 | 1.9% | 5.9% |
| Retail Trade | 222.5 | 215.5 | 230.2 | 7.0 | -7.7 | 3.2% | -3.3% |
| Motor Vehicles and Parts | 33.1 | 32.7 | 34.7 | 0.4 | -1.6 | 1.2% | -4.6% |
| Building Material, Garden Supply | 19.8 | 19.4 | 18.5 | 0.4 | 1.3 | 2.1% | 7.0% |
| Food and Beverage | 42.2 | 42.2 | 40.9 | 0.0 | 1.3 | 0.0% | 3.2% |
| General Merchandise | 42.6 | 40.7 | 41.5 | 1.9 | 1.1 | 4.7% | 2.7% |
| Department Stores | 13.4 | 12.5 | 15.7 | 0.9 | -2.3 | 7.2% | -14.6% |
| Other General merchandise | 29.2 | 28.2 | 25.8 | 1.0 | 3.4 | 3.5% | 13.2% |
| Transportation, Warehousing and Utilities | 89.6 | 90.8 | 89.2 | -1.2 | 0.4 | -1.3% | 0.4% |
| Utilities | 8.3 | 8.3 | 8.0 | 0.0 | 0.3 | 0.0% | 3.8% |
| Transportation and warehousing | 81.3 | 82.5 | 81.2 | -1.2 | 0.1 | -1.5% | 0.1% |
| Truck transportation | 18.5 | 18.7 | 17.7 | -0.2 | 0.8 | -1.1% | 4.5% |
| Information | 37.5 | 37.4 | 39.9 | 0.1 | -2.4 | 0.3% | -6.0% |
| Telecommunications | 12.5 | 12.6 | 12.7 | -0.1 | -0.2 | -0.8% | -1.6% |
| Financial Activities | 202.0 | 201.5 | 201.1 | 0.5 | 0.9 | 0.2% | 0.4% |
| Finance and Insurance | 159.4 | 158.5 | 155.8 | 0.9 | 3.6 | 0.6% | 2.3% |
| Credit Intermediation., Monetary Auth. | 85.2 | 84.3 | 81.2 | 0.9 | 4.0 | 1.1% | 4.9% |
| Financial Investments and Vehicles | 18.0 | 17.8 | 18.3 | 0.2 | -0.3 | 1.1% | -1.6% |
| Insurance Carriers | 56.2 | 56.4 | 56.3 | -0.2 | -0.1 | -0.4% | -0.2% |
| Real Estate and Rental and Leasing | 42.6 | 43.0 | 45.3 | -0.4 | -2.7 | -0.9% | -6.0% |
| Professional and Business Services | 337.9 | 342.2 | 362.2 | -4.3 | -24.3 | -1.3% | -6.7% |
| Professional, Scientific and Technical Services | 123.5 | 128.8 | 128.0 | -5.3 | -4.5 | -4.1% | -3.5% |
| Management of Companies and Enterprises | 27.5 | 28.1 | 27.5 | -0.6 | 0.0 | -2.1% | 0.0% |
| Administrative and Waste Services | 186.9 | 185.3 | 206.7 | 1.6 | -19.8 | 0.9% | -9.6% |
| Employment Services | 80.8 | 81.9 | 89.8 | -1.1 | -9.0 | -1.3% | -10.0% |
| Business Support Services | 25.7 | 25.3 | 28.1 | 0.4 | -2.4 | 1.6% | -8.5% |
| Services to Buildings and Dwellings | 32.2 | 31.9 | 35.9 | 0.3 | -3.7 | 0.9% | -10.3% |
| Education and Health Services | 327.4 | 321.7 | 335.2 | 5.7 | -7.8 | 1.8% | -2.3% |
| Educational Services | 54.4 | 55.2 | 56.2 | -0.8 | -1.8 | -1.4% | -3.2% |
| Health Care and Social Assistance | 273.0 | 266.5 | 279.0 | 6.5 | -6.0 | 2.4% | -2.2% |
| Health Care | 229.3 | 223.0 | 233.0 | 6.3 | -3.7 | 2.8% | -1.6% |
| Ambulatory Health Care Services | 124.9 | 117.3 | 128.4 | 7.6 | -3.5 | 6.5% | -2.7% |
| Hospitals | 64.7 | 65.7 | 64.8 | -1.0 | -0.1 | -1.5% | -0.2% |
| Nursing and Residential Care Facilities | 39.7 | 40.0 | 39.8 | -0.3 | -0.1 | -0.7% | -0.3% |
| Social Assistance | 43.7 | 43.5 | 46.0 | 0.2 | -2.3 | 0.5% | -5.0% |
| Leisure and Hospitality | 170.8 | 146.0 | 233.3 | 24.8 | -62.5 | 17.0% | -26.8% |
| Arts, Entertainment and Recreation | 17.9 | 17.5 | 35.6 | 0.4 | -17.7 | 2.3% | -49.7% |
| Accommodation and Food Services | 152.9 | 128.5 | 197.7 | 24.4 | -44.8 | 19.0% | -22.7% |
| Accommodation | 13.8 | 17.6 | 26.0 | -3.8 | -12.2 | -21.6% | -46.9% |
| Food Services and Drinking Places | 139.1 | 110.9 | 171.7 | 28.2 | -32.6 | 25.4% | -19.0% |
| Other Services (except Public Administration) | 67.2 | 61.1 | 70.9 | 6.1 | -3.7 | 10.0% | -5.2% |
| Government | 241.5 | 251.2 | 244.5 | -9.7 | -3.0 | -3.9% | -1.2% |
| Federal Government | 23.9 | 24.0 | 23.0 | -0.1 | 0.9 | -0.4% | 3.9% |
| State Government | 54.1 | 56.8 | 47.5 | -2.7 | 6.6 | -4.8% | 13.9% |
| State Government Education | 27.9 | 30.4 | 21.6 | -2.5 | 6.3 | -8.2% | 29.2% |
| Local Government | 163.5 | 170.4 | 174.0 | -6.9 | -10.5 | -4.0% | -6.0% |
| Local Government Education | 86.9 | 93.2 | 95.6 | -6.3 | -8.7 | -6.8% | -9.1% |

Note: 1) Phoenix-Mesa-Scottsdale Metropolitan Area includes Maricopa and Pinal counties. For other notes and source, see end of Table 2

Table 2 (Cont.)

Nonfarm Payroll Employment

(in Thousands, Not Seasonally Adjusted)

| TUCSON MSA ³ | | | | Amount Change | | Percent Change | |
|--|----------------|------------------|----------------|------------------------|----------------------|------------------------|----------------------|
| | May 2020(b) | April 2020(c) | May 2019(c) | Monthly | Over-Year | Monthly | Over-Year |
| | | | | April '20 - May '20 | May '19 - May '20 | April '20 - May '20 | May '19 - May '20 |
| Total Nonfarm Payroll Employment^{(c)(d)} | 368.8 | 361.3 | 389.7 | 7.5 | -20.9 | 2.1% | -5.4% |
| Private Sector | 289.4 | 280.3 | 309.3 | 9.1 | -19.9 | 3.2% | -6.4% |
| Government | 79.4 | 81.0 | 80.4 | -1.6 | -1.0 | -2.0% | -1.2% |
| Goods-Producing Industries | 47.6 | 45.9 | 47.7 | 1.7 | -0.1 | 3.7% | -0.2% |
| Manufacturing | 27.1 | 27.2 | 27.8 | -0.1 | -0.7 | -0.4% | -2.5% |
| Aerospace Products and Parts | 13.8 | 13.5 | 13.6 | 0.3 | 0.2 | 2.2% | 1.5% |
| Natural Resources and Mining | 1.8 | 1.8 | 2.0 | 0.0 | -0.2 | 0.0% | -10.0% |
| Construction | 18.7 | 16.9 | 17.9 | 1.8 | 0.8 | 10.7% | 4.5% |
| Specialty Trades | 14.7 | 13.4 | 13.3 | 1.3 | 1.4 | 9.7% | 10.5% |
| Service-Providing Industries | 321.2 | 315.4 | 342.0 | 5.8 | -20.8 | 1.8% | -6.1% |
| Private Service Providing | 241.8 | 234.4 | 261.6 | 7.4 | -19.8 | 3.2% | -7.6% |
| Trade, Transportation and Utilities | 61.3 | 60.5 | 62.5 | 0.8 | -1.2 | 1.3% | -1.9% |
| Trade | 47.7 | 47.5 | 48.9 | 0.2 | -1.2 | 0.4% | -2.5% |
| Wholesale Trade | 7.4 | 7.3 | 7.3 | 0.1 | 0.1 | 1.4% | 1.4% |
| Retail Trade | 40.3 | 40.2 | 41.6 | 0.1 | -1.3 | 0.2% | -3.1% |
| General Merchandise | 8.8 | 8.5 | 8.5 | 0.3 | 0.3 | 3.5% | 3.5% |
| Department Stores | 2.9 | 2.7 | 3.4 | 0.2 | -0.5 | 7.4% | -14.7% |
| Other General Merchandise | 5.9 | 5.8 | 5.1 | 0.1 | 0.8 | 1.7% | 15.7% |
| Food and Beverage Stores | 9.2 | 9.2 | 8.9 | 0.0 | 0.3 | 0.0% | 3.4% |
| Transportation, Warehousing and Utilities | 13.6 | 13.0 | 13.6 | 0.6 | 0.0 | 4.6% | 0.0% |
| Information | 3.9 | 3.9 | 5.9 | 0.0 | -2.0 | 0.0% | -33.9% |
| Financial Activities | 16.5 | 17.0 | 17.1 | -0.5 | -0.6 | -2.9% | -3.5% |
| Professional and Business Services | 46.9 | 46.6 | 49.4 | 0.3 | -2.5 | 0.6% | -5.1% |
| Professional, Scientific and Technical Service | 18.0 | 18.4 | 17.8 | -0.4 | 0.2 | -2.2% | 1.1% |
| Administrative and Waste Services | 27.4 | 26.6 | 30.2 | 0.8 | -2.8 | 3.0% | -9.3% |
| Employment Services | 9.1 | 8.7 | 10.9 | 0.4 | -1.8 | 4.6% | -16.5% |
| Business Support Services | 8.0 | 8.2 | 9.2 | -0.2 | -1.2 | -2.4% | -13.0% |
| Education and Health Services | 65.0 | 64.0 | 67.6 | 1.0 | -2.6 | 1.6% | -3.8% |
| Health Care | 49.6 | 48.3 | 50.2 | 1.3 | -0.6 | 2.7% | -1.2% |
| Ambulatory Health Care Services | 22.5 | 21.1 | 22.9 | 1.4 | -0.4 | 6.6% | -1.7% |
| Hospitals | 16.6 | 16.7 | 16.9 | -0.1 | -0.3 | -0.6% | -1.8% |
| Nursing and Residential Care Facilities | 10.5 | 10.5 | 10.4 | 0.0 | 0.1 | 0.0% | 1.0% |
| Leisure and Hospitality | 35.3 | 30.9 | 45.3 | 4.4 | -10.0 | 14.2% | -22.1% |
| Accommodations and Food Services | 31.2 | 26.3 | 40.2 | 4.9 | -9.0 | 18.6% | -22.4% |
| Accommodations | 4.2 | 5.2 | 7.2 | -1.0 | -3.0 | -19.2% | -41.7% |
| Food Services and Drinking Places | 27.0 | 21.1 | 33.0 | 5.9 | -6.0 | 28.0% | -18.2% |
| Other Services (except Public Administration) | 12.9 | 11.5 | 13.8 | 1.4 | -0.9 | 12.2% | -6.5% |
| Government | 79.4 | 81.0 | 80.4 | -1.6 | -1.0 | -2.0% | -1.2% |
| Federal Government | 13.1 | 13.1 | 12.9 | 0.0 | 0.2 | 0.0% | 1.6% |
| State Government | 26.6 | 27.2 | 25.8 | -0.6 | 0.8 | -2.2% | 3.1% |
| State Government Education | 21.8 | 22.5 | 21.3 | -0.7 | 0.5 | -3.1% | 2.3% |
| Local Government | 39.7 | 40.7 | 41.7 | -1.0 | -2.0 | -2.5% | -4.8% |
| Local Government Education | 21.0 | 21.5 | 22.3 | -0.5 | -1.3 | -2.3% | -5.8% |

Note: 3) Tucson Metropolitan Area includes all of Pima County. For other notes and source, see end of Table 2.

Table 2 (Cont.)

Nonfarm Payroll Employment

(in Thousands, Not Seasonally Adjusted)

| YUMA MSA ⁴ | May 2020(b) | April 2020(c) | May 2019(c) | Amount Change | | Percent Change | |
|--|----------------|------------------|----------------|------------------------|----------------------|------------------------|----------------------|
| | | | | Monthly | Over-Year | Monthly | Over-Year |
| | | | | April '20 - May '20 | May '19 - May '20 | April '20 - May '20 | May '19 - May '20 |
| Total Nonfarm Payroll Employment⁽¹⁾⁽²⁾ | 53.8 | 52.3 | 56.3 | 1.5 | -2.5 | 2.9% | -4.4% |
| Private Sector | 39.5 | 37.9 | 41.6 | 1.6 | -2.1 | 4.2% | -5.0% |
| Government | 14.3 | 14.4 | 14.7 | -0.1 | -0.4 | -0.7% | -2.7% |
| Goods-Producing Industries | 5.8 | 5.5 | 5.4 | 0.3 | 0.4 | 5.5% | 7.4% |
| Manufacturing | 2.8 | 2.8 | 2.4 | 0.0 | 0.4 | 0.0% | 16.7% |
| Natural Resources and Construction | 3.0 | 2.7 | 3.0 | 0.3 | 0.0 | 11.1% | 0.0% |
| Service-Providing Industries | 48.0 | 46.8 | 50.9 | 1.2 | -2.9 | 2.6% | -5.7% |
| Private Service Providing | 33.7 | 32.4 | 36.2 | 1.3 | -2.5 | 4.0% | -6.9% |
| Trade, Transportation and Utilities | 11.2 | 11.2 | 11.6 | 0.0 | -0.4 | 0.0% | -3.4% |
| Information | 0.4 | 0.4 | 0.5 | 0.0 | -0.1 | 0.0% | -20.0% |
| Financial Activities | 2.0 | 2.0 | 2.0 | 0.0 | 0.0 | 0.0% | 0.0% |
| Professional and Business Services | 5.4 | 5.5 | 5.9 | -0.1 | -0.5 | -1.8% | -8.5% |
| Education and Health Services | 7.6 | 7.8 | 8.2 | -0.2 | -0.6 | -2.6% | -7.3% |
| Leisure and Hospitality | 5.4 | 3.9 | 6.3 | 1.5 | -0.9 | 38.5% | -14.3% |
| Other Services (except Public Administration) | 1.7 | 1.6 | 1.7 | 0.1 | 0.0 | 6.3% | 0.0% |
| Government | 14.3 | 14.4 | 14.7 | -0.1 | -0.4 | -0.7% | -2.7% |
| Federal Government | 3.7 | 3.7 | 3.6 | 0.0 | 0.1 | 0.0% | 2.8% |
| State and Local Government | 10.6 | 10.7 | 11.1 | -0.1 | -0.5 | -0.9% | -4.5% |

Note: 4) Yuma Metropolitan Area includes all of Yuma County. For other notes and source, see end of Table 2

| FLAGSTAFF MSA ⁵ | May 2020(b) | April 2020(c) | May 2019(c) | Amount Change | | Percent Change | |
|--|----------------|------------------|----------------|------------------------|----------------------|------------------------|----------------------|
| | | | | Monthly | Over-Year | Monthly | Over-Year |
| | | | | April '20 - May '20 | May '19 - May '20 | April '20 - May '20 | May '19 - May '20 |
| Total Nonfarm Payroll Employment⁽¹⁾⁽²⁾ | 56.6 | 55.6 | 68.5 | 1.0 | -11.9 | 1.8% | -17.4% |
| Private Sector | 38.1 | 35.6 | 48.7 | 2.5 | -10.6 | 7.0% | -21.8% |
| Government | 18.5 | 20.0 | 19.8 | -1.5 | -1.3 | -7.5% | -6.6% |
| Goods-Producing Industries | 5.9 | 5.6 | 6.4 | 0.3 | -0.5 | 5.4% | -7.8% |
| Manufacturing | 3.6 | 3.5 | 3.7 | 0.1 | -0.1 | 2.9% | -2.7% |
| Natural Resources and Construction | 2.3 | 2.1 | 2.7 | 0.2 | -0.4 | 9.5% | -14.8% |
| Service-Providing Industries | 50.7 | 50.0 | 62.1 | 0.7 | -11.4 | 1.4% | -18.4% |
| Private Service Providing | 32.2 | 30.0 | 42.3 | 2.2 | -10.1 | 7.3% | -23.9% |
| Trade, Transportation and Utilities | 8.6 | 8.7 | 9.3 | -0.1 | -0.7 | -1.1% | -7.5% |
| Information | 0.4 | 0.4 | 0.5 | 0.0 | -0.1 | 0.0% | -20.0% |
| Financial Activities | 1.5 | 1.5 | 1.5 | 0.0 | 0.0 | 0.0% | 0.0% |
| Professional and Business Services | 3.5 | 3.3 | 3.6 | 0.2 | -0.1 | 6.1% | -2.8% |
| Education and Health Services | 8.9 | 8.8 | 9.5 | 0.1 | -0.6 | 1.1% | -6.3% |
| Leisure and Hospitality | 7.8 | 5.9 | 16.1 | 1.9 | -8.3 | 32.2% | -51.6% |
| Other Services (except Public Administration) | 1.5 | 1.4 | 1.8 | 0.1 | -0.3 | 7.1% | -16.7% |
| Government | 18.5 | 20.0 | 19.8 | -1.5 | -1.3 | -7.5% | -6.6% |
| Federal Government | 2.6 | 2.6 | 2.8 | 0.0 | -0.2 | 0.0% | -7.1% |
| State and Local Government | 15.9 | 17.4 | 17.0 | -1.5 | -1.1 | -8.6% | -6.5% |

Notes: 5) Flagstaff Metropolitan Area includes all of Coconino County. For other notes and source, see end of Table 2

Table 2 (Cont.)

Nonfarm Payroll Employment

(in Thousands, Not Seasonally Adjusted)

| PRESCOTT MSA ⁶ | | | | Amount Change | | Percent Change | |
|---|----------------|------------------|----------------|------------------------|----------------------|------------------------|----------------------|
| | May 2020(b) | April 2020(c) | May 2019(c) | Monthly | Over-Year | Monthly | Over-Year |
| | | | | April '20 - May '20 | May '19 - May '20 | April '20 - May '20 | May '19 - May '20 |
| Total Nonfarm Payroll Employment | 64.1 | 62.1 | 66.0 | 2.0 | -1.9 | 3.2% | -2.9% |
| Private Sector | 53.0 | 50.8 | 55.1 | 2.2 | -2.1 | 4.3% | -3.8% |
| Government | 11.1 | 11.3 | 10.9 | -0.2 | 0.2 | -1.8% | 1.8% |
| Goods-Producing Industries | 9.9 | 9.7 | 10.1 | 0.2 | -0.2 | 2.1% | -2.0% |
| Manufacturing | 3.6 | 3.5 | 3.9 | 0.1 | -0.3 | 2.9% | -7.7% |
| Natural Resources and Construction | 6.3 | 6.2 | 6.2 | 0.1 | 0.1 | 1.6% | 1.6% |
| Service-Providing Industries | 54.2 | 52.4 | 55.9 | 1.8 | -1.7 | 3.4% | -3.0% |
| Private Service Providing | 43.1 | 41.1 | 45.0 | 2.0 | -1.9 | 4.9% | -4.2% |
| Trade, Transportation and Utilities | 12.4 | 12.3 | 12.6 | 0.1 | -0.2 | 0.8% | -1.6% |
| Information | 0.5 | 0.5 | 0.5 | 0.0 | 0.0 | 0.0% | 0.0% |
| Financial Activities | 2.1 | 2.1 | 2.1 | 0.0 | 0.0 | 0.0% | 0.0% |
| Professional and Business Services | 4.3 | 4.2 | 4.4 | 0.1 | -0.1 | 2.4% | -2.3% |
| Education and Health Services | 11.8 | 11.9 | 12.5 | -0.1 | -0.7 | -0.8% | -5.6% |
| Leisure and Hospitality | 10.0 | 8.3 | 10.6 | 1.7 | -0.6 | 20.5% | -5.7% |
| Other Services (except Public Administration) | 2.0 | 1.8 | 2.3 | 0.2 | -0.3 | 11.1% | -13.0% |
| Government | 11.1 | 11.3 | 10.9 | -0.2 | 0.2 | -1.8% | 1.8% |
| Federal Government | 1.7 | 1.7 | 1.5 | 0.0 | 0.2 | 0.0% | 13.3% |
| State and Local Government | 9.4 | 9.6 | 9.4 | -0.2 | 0.0 | -2.1% | 0.0% |

Note: 6) Prescott Metropolitan Area includes all of Yavapai County. For other notes and source, see end of Table 2

LAKE HAVASU CITY-KINGMAN MSA⁷

| LAKE HAVASU CITY-KINGMAN MSA ⁷ | | | | Amount Change | | Percent Change | |
|---|----------------|------------------|----------------|------------------------|----------------------|------------------------|----------------------|
| | May 2020(b) | April 2020(c) | May 2019(c) | Monthly | Over-Year | Monthly | Over-Year |
| | | | | April '20 - May '20 | May '19 - May '20 | April '20 - May '20 | May '19 - May '20 |
| Total Nonfarm Payroll Employment | 47.0 | 45.7 | 52.5 | 1.3 | -5.5 | 2.8% | -10.5% |
| Private Sector | 38.8 | 37.5 | 44.0 | 1.3 | -5.2 | 3.5% | -11.8% |
| Government | 8.2 | 8.2 | 8.5 | 0.0 | -0.3 | 0.0% | -3.5% |
| Goods-Producing Industries | 6.5 | 6.1 | 6.6 | 0.4 | -0.1 | 6.6% | -1.5% |
| Manufacturing | 3.1 | 3.0 | 3.2 | 0.1 | -0.1 | 3.3% | -3.1% |
| Natural Resources and Construction | 3.4 | 3.1 | 3.4 | 0.3 | 0.0 | 9.7% | 0.0% |
| Service-Providing Industries | 40.5 | 39.6 | 45.9 | 0.9 | -5.4 | 2.3% | -11.8% |
| Private Service Providing | 32.3 | 31.4 | 37.4 | 0.9 | -5.1 | 2.9% | -13.6% |
| Trade, Transportation and Utilities | 12.3 | 12.1 | 12.7 | 0.2 | -0.4 | 1.7% | -3.1% |
| Information | 0.5 | 0.5 | 0.5 | 0.0 | 0.0 | 0.0% | 0.0% |
| Financial Activities | 1.8 | 1.8 | 1.8 | 0.0 | 0.0 | 0.0% | 0.0% |
| Professional and Business Services | 3.3 | 3.3 | 3.8 | 0.0 | -0.5 | 0.0% | -13.2% |
| Education and Health Services | 8.7 | 8.6 | 9.1 | 0.1 | -0.4 | 1.2% | -4.4% |
| Leisure and Hospitality | 4.1 | 3.6 | 7.6 | 0.5 | -3.5 | 13.9% | -46.1% |
| Other Services (except Public Administration) | 1.6 | 1.5 | 1.9 | 0.1 | -0.3 | 6.7% | -15.8% |
| Government | 8.2 | 8.2 | 8.5 | 0.0 | -0.3 | 0.0% | -3.5% |
| Federal Government | 0.5 | 0.5 | 0.5 | 0.0 | 0.0 | 0.0% | 0.0% |
| State and Local Government | 7.7 | 7.7 | 8.0 | 0.0 | -0.3 | 0.0% | -3.8% |

Note: 7) Lake Havasu City-Kingman Metropolitan Area includes all of Mohave County
For other notes and source, see next page

Table 2 (Cont.)

Nonfarm Payroll Employment

(in Thousands, Not Seasonally Adjusted)

SIERRA VISTA-DOUGLAS MSA⁸

| | | | | Amount Change | | Percent Change | |
|---|-------------|-------------|-------------|------------------------|----------------------|------------------------|----------------------|
| | May | April | May | Monthly | Over-Year | Monthly | Over-Year |
| | 2020(b) | 2020(c) | 2019(c) | April '20 - May '20 | May '19 - May '20 | April '20 - May '20 | May '19 - May '20 |
| Total Nonfarm Payroll Employment^(c,d) | 33.4 | 32.4 | 33.9 | 1.0 | -0.5 | 3.1% | -1.5% |
| Private Sector | 22.1 | 21.2 | 22.8 | 0.9 | -0.7 | 4.2% | -3.1% |
| Government | 11.3 | 11.2 | 11.1 | 0.1 | 0.2 | 0.9% | 1.8% |
| Goods-Producing Industries | 2.5 | 2.2 | 2.4 | 0.3 | 0.1 | 13.6% | 4.2% |
| Manufacturing | 0.6 | 0.5 | 0.6 | 0.1 | 0.0 | 20.0% | 0.0% |
| Natural Resources and Construction | 1.9 | 1.7 | 1.8 | 0.2 | 0.1 | 11.8% | 5.6% |
| Service-Providing Industries | 30.9 | 30.2 | 31.5 | 0.7 | -0.6 | 2.3% | -1.9% |
| Private Service Providing | 19.6 | 19.0 | 20.4 | 0.6 | -0.8 | 3.2% | -3.9% |
| Trade, Transportation and Utilities | 6.3 | 5.8 | 5.9 | 0.5 | 0.4 | 8.6% | 6.8% |
| Information | 0.3 | 0.3 | 0.4 | 0.0 | -0.1 | 0.0% | -25.0% |
| Financial Activities | 0.8 | 0.8 | 0.8 | 0.0 | 0.0 | 0.0% | 0.0% |
| Professional and Business Services | 4.5 | 4.6 | 4.2 | -0.1 | 0.3 | -2.2% | 7.1% |
| Education and Health Services | 4.1 | 4.0 | 4.7 | 0.1 | -0.6 | 2.5% | -12.8% |
| Leisure and Hospitality | 3.0 | 3.0 | 3.7 | 0.0 | -0.7 | 0.0% | -18.9% |
| Other Services (except Public Administration) | 0.6 | 0.5 | 0.7 | 0.1 | -0.1 | 20.0% | -14.3% |
| Government | 11.3 | 11.2 | 11.1 | 0.1 | 0.2 | 0.9% | 1.8% |
| Federal Government | 5.1 | 4.9 | 4.8 | 0.2 | 0.3 | 4.1% | 6.3% |
| State and Local Government | 6.2 | 6.3 | 6.3 | -0.1 | -0.1 | -1.6% | -1.6% |

Note: 8) Sierra Vista Douglas Metropolitan Area includes all of Cochise County

Other notes and sources:

a) Nonfarm employment at the state and substate level is produced from the monthly establishment survey by the Current Employment Statistics (CES)
For more information on the establishment survey, see: <http://www.bls.gov/bls/empstquickguide.htm>

b) Preliminary and subject to revision the following month

c) Revised

d) By place of work; does not include agricultural workers, self-employed, unpaid family members, and domestic workers

e) Detail may not add up exactly due to rounding

MSA — Metropolitan Statistical Area

NA — Not Available

Source: Prepared by the Arizona Office of Economic Opportunity, in cooperation with the U.S. Dept. of Labor, Bureau of Labor Statistics

Labor Force

Prepared in Cooperation with the U.S. Department of Labor, Bureau of Labor Statistics
Arizona Office of Economic Opportunity

2020

Apache County

| | JAN | FEB | MAR | APR | MAY | JUN | JUL | AUG | SEP | OCT | NOV | DEC | AVG |
|----------------------|--------|--------|--------|--------|--------|-----|-----|-----|-----|-----|-----|-----|-----|
| Civilian Labor Force | 20,785 | 20,710 | 21,128 | 20,086 | 19,539 | | | | | | | | |
| Employment | 18,490 | 18,588 | 18,198 | 16,923 | 17,357 | | | | | | | | |
| Unemployment | 2,295 | 2,122 | 2,930 | 3,163 | 2,182 | | | | | | | | |
| Unemployment rate | 11.0 | 10.2 | 13.9 | 15.7 | 11.2 | | | | | | | | |

Adjusted to the Current Population Survey (CPS 2020) to reflect place of residence

Equal Opportunity Employer/ Program available in alternative format/ reasonable accommodations: 602-771-1110, TDD 1-800-367-8939

Labor Force

Prepared in Cooperation with the U.S. Department of Labor, Bureau of Labor Statistics
Arizona Office of Economic Opportunity

2020

Cochise County(Sierra-Vista Douglas MSA)

| | JAN | FEB | MAR | APR | MAY | JUN | JUL | AUG | SEP | OCT | NOV | DEC | AVG |
|----------------------|--------|--------|--------|--------|--------|-----|-----|-----|-----|-----|-----|-----|-----|
| Civilian Labor Force | 51,901 | 52,169 | 52,093 | 50,443 | 50,680 | | | | | | | | |
| Employment | 48,897 | 49,345 | 48,245 | 44,850 | 47,015 | | | | | | | | |
| Unemployment | 3,004 | 2,824 | 3,848 | 5,593 | 3,665 | | | | | | | | |
| Unemployment rate | 5.8 | 5.4 | 7.4 | 11.1 | 7.2 | | | | | | | | |

Adjusted to the Current Population Survey (CPS 2020) to reflect place of residence

Equal Opportunity Employer/ Program available in alternative format/ reasonable accommodations: 602-771-1110, TDD 1-800-367-8939

Labor Force

Prepared in Cooperation with the U.S. Department of Labor, Bureau of Labor Statistics
Arizona Office of Economic Opportunity

2020

Coconino County(Flagstaff MSA)

| | JAN | FEB | MAR | APR | MAY | JUN | JUL | AUG | SEP | OCT | NOV | DEC | AVG |
|----------------------|--------|--------|--------|--------|--------|-----|-----|-----|-----|-----|-----|-----|-----|
| Civilian Labor Force | 77,687 | 77,685 | 77,165 | 71,690 | 70,371 | | | | | | | | |
| Employment | 72,788 | 73,191 | 70,937 | 59,231 | 62,160 | | | | | | | | |
| Unemployment | 4,899 | 4,494 | 6,228 | 12,459 | 8,211 | | | | | | | | |
| Unemployment rate | 6.3 | 5.8 | 8.1 | 17.4 | 11.7 | | | | | | | | |

Adjusted to the Current Population Survey (CPS 2020) to reflect place of residence

Equal Opportunity Employer/ Program available in alternative format/ reasonable accommodations: 602-771-1110, TDD 1-800-367-8939

Labor Force

Prepared in Cooperation with the U.S. Department of Labor, Bureau of Labor Statistics
Arizona Office of Economic Opportunity

2020

Gila County

| | JAN | FEB | MAR | APR | MAY | JUN | JUL | AUG | SEP | OCT | NOV | DEC | AVG |
|----------------------|--------|--------|--------|--------|--------|-----|-----|-----|-----|-----|-----|-----|-----|
| Civilian Labor Force | 21,565 | 21,577 | 21,547 | 21,205 | 20,923 | | | | | | | | |
| Employment | 20,325 | 20,418 | 19,937 | 18,722 | 19,343 | | | | | | | | |
| Unemployment | 1,240 | 1,159 | 1,610 | 2,483 | 1,580 | | | | | | | | |
| Unemployment rate | 5.8 | 5.4 | 7.5 | 11.7 | 7.6 | | | | | | | | |

Adjusted to the Current Population Survey (CPS 2020) to reflect place of residence

Equal Opportunity Employer/ Program available in alternative format/ reasonable accommodations: 602-771-1110, TDD 1-800-367-8939

Labor Force

Prepared in Cooperation with the U.S. Department of Labor, Bureau of Labor Statistics
Arizona Office of Economic Opportunity

2020

Graham County

| | JAN | FEB | MAR | APR | MAY | JUN | JUL | AUG | SEP | OCT | NOV | DEC | AVG |
|----------------------|--------|--------|--------|--------|--------|-----|-----|-----|-----|-----|-----|-----|-----|
| Civilian Labor Force | 15,417 | 15,909 | 15,865 | 15,390 | 15,500 | | | | | | | | |
| Employment | 14,640 | 15,152 | 14,825 | 14,210 | 14,569 | | | | | | | | |
| Unemployment | 777 | 757 | 1,040 | 1,180 | 931 | | | | | | | | |
| Unemployment rate | 5.0 | 4.8 | 6.6 | 7.7 | 6.0 | | | | | | | | |

Adjusted to the Current Population Survey (CPS 2020) to reflect place of residence

Equal Opportunity Employer/ Program available in alternative format/ reasonable accommodations: 602-771-1110, TDD 1-800-367-8939

Labor Force

Prepared in Cooperation with the U.S. Department of Labor, Bureau of Labor Statistics
Arizona Office of Economic Opportunity

2020

Greenlee County

| | JAN | FEB | MAR | APR | MAY | JUN | JUL | AUG | SEP | OCT | NOV | DEC | AVG |
|----------------------|-------|-------|-------|-------|-------|-----|-----|-----|-----|-----|-----|-----|-----|
| Civilian Labor Force | 4,585 | 4,628 | 4,578 | 4,560 | 4,648 | | | | | | | | |
| Employment | 4,413 | 4,458 | 4,339 | 4,315 | 4,456 | | | | | | | | |
| Unemployment | 172 | 170 | 239 | 245 | 192 | | | | | | | | |
| Unemployment rate | 3.8 | 3.7 | 5.2 | 5.4 | 4.1 | | | | | | | | |

Adjusted to the Current Population Survey (CPS 2020) to reflect place of residence

Equal Opportunity Employer/ Program available in alternative format/ reasonable accommodations: 602-771-1110, TDD 1-800-367-8939

Labor Force

Prepared in Cooperation with the U.S. Department of Labor, Bureau of Labor Statistics
Arizona Office of Economic Opportunity

2020

La Paz County

| | JAN | FEB | MAR | APR | MAY | JUN | JUL | AUG | SEP | OCT | NOV | DEC | AVG |
|----------------------|-------|-------|-------|-------|-------|-----|-----|-----|-----|-----|-----|-----|-----|
| Civilian Labor Force | 9,751 | 9,774 | 9,978 | 9,072 | 8,715 | | | | | | | | |
| Employment | 9,168 | 9,224 | 9,215 | 8,288 | 8,190 | | | | | | | | |
| Unemployment | 583 | 550 | 763 | 784 | 525 | | | | | | | | |
| Unemployment rate | 6.0 | 5.6 | 7.6 | 8.6 | 6.0 | | | | | | | | |

Adjusted to the Current Population Survey (CPS 2020) to reflect place of residence

Equal Opportunity Employer/ Program available in alternative format/ reasonable accommodations: 602-771-1110, TDD 1-800-367-8939

Labor Force

Prepared in Cooperation with the U.S. Department of Labor, Bureau of Labor Statistics
Arizona Office of Economic Opportunity

2020

Maricopa County

| | JAN | FEB | MAR | APR | MAY | JUN | JUL | AUG | SEP | OCT | NOV | DEC | AVG |
|----------------------|-----------|-----------|-----------|-----------|-----------|-----|-----|-----|-----|-----|-----|-----|-----|
| Civilian Labor Force | 2,360,096 | 2,373,098 | 2,334,396 | 2,307,896 | 2,314,133 | | | | | | | | |
| Employment | 2,266,177 | 2,283,286 | 2,209,663 | 2,019,432 | 2,122,717 | | | | | | | | |
| Unemployment | 93,919 | 89,812 | 124,733 | 288,464 | 191,416 | | | | | | | | |
| Unemployment rate | 4.0 | 3.8 | 5.3 | 12.5 | 8.3 | | | | | | | | |

Adjusted to the Current Population Survey (CPS 2020) to reflect place of residence

Equal Opportunity Employer/ Program available in alternative format/ reasonable accommodations: 602-771-1110, TDD 1-800-367-8939

Labor Force

Prepared in Cooperation with the U.S. Department of Labor, Bureau of Labor Statistics
Arizona Office of Economic Opportunity

2020

Mohave County(Lake Havasu City-Kingman MSA)

| | JAN | FEB | MAR | APR | MAY | JUN | JUL | AUG | SEP | OCT | NOV | DEC | AVG |
|----------------------|--------|--------|--------|--------|--------|-----|-----|-----|-----|-----|-----|-----|-----|
| Civilian Labor Force | 89,027 | 89,571 | 88,261 | 86,810 | 86,578 | | | | | | | | |
| Employment | 83,775 | 84,668 | 81,466 | 70,023 | 74,623 | | | | | | | | |
| Unemployment | 5,252 | 4,903 | 6,795 | 16,787 | 11,955 | | | | | | | | |
| Unemployment rate | 5.9 | 5.5 | 7.7 | 19.3 | 13.8 | | | | | | | | |

Adjusted to the Current Population Survey (CPS 2020) to reflect place of residence

Equal Opportunity Employer/ Program available in alternative format/ reasonable accommodations: 602-771-1110, TDD 1-800-367-8939

Labor Force

Prepared in Cooperation with the U.S. Department of Labor, Bureau of Labor Statistics
Arizona Office of Economic Opportunity

2020

Navajo County

| | JAN | FEB | MAR | APR | MAY | JUN | JUL | AUG | SEP | OCT | NOV | DEC | AVG |
|----------------------|--------|--------|--------|--------|--------|-----|-----|-----|-----|-----|-----|-----|-----|
| Civilian Labor Force | 40,989 | 40,941 | 41,510 | 40,177 | 39,627 | | | | | | | | |
| Employment | 37,667 | 37,833 | 37,205 | 34,421 | 35,805 | | | | | | | | |
| Unemployment | 3,322 | 3,108 | 4,305 | 5,756 | 3,822 | | | | | | | | |
| Unemployment rate | 8.1 | 7.6 | 10.4 | 14.3 | 9.6 | | | | | | | | |

Adjusted to the Current Population Survey (CPS 2020) to reflect place of residence

Equal Opportunity Employer/ Program available in alternative format/ reasonable accommodations: 602-771-1110, TDD 1-800-367-8939

Labor Force

Prepared in Cooperation with the U.S. Department of Labor, Bureau of Labor Statistics
Arizona Office of Economic Opportunity

2020

Pima County(Tucson MSA)

| | JAN | FEB | MAR | APR | MAY | JUN | JUL | AUG | SEP | OCT | NOV | DEC | AVG |
|----------------------|---------|---------|---------|---------|---------|-----|-----|-----|-----|-----|-----|-----|-----|
| Civilian Labor Force | 504,206 | 507,744 | 500,658 | 497,905 | 500,776 | | | | | | | | |
| Employment | 481,622 | 486,239 | 470,843 | 434,363 | 458,809 | | | | | | | | |
| Unemployment | 22,584 | 21,505 | 29,815 | 63,542 | 41,967 | | | | | | | | |
| Unemployment rate | 4.5 | 4.2 | 6.0 | 12.8 | 8.4 | | | | | | | | |

Adjusted to the Current Population Survey (CPS 2020) to reflect place of residence

Equal Opportunity Employer/ Program available in alternative format/ reasonable accommodations: 602-771-1110, TDD 1-800-367-8939

Labor Force

Prepared in Cooperation with the U.S. Department of Labor, Bureau of Labor Statistics
Arizona Office of Economic Opportunity

2020

Pinal County

| | JAN | FEB | MAR | APR | MAY | JUN | JUL | AUG | SEP | OCT | NOV | DEC | AVG |
|----------------------|---------|---------|---------|---------|---------|-----|-----|-----|-----|-----|-----|-----|-----|
| Civilian Labor Force | 192,010 | 192,715 | 191,117 | 183,683 | 183,440 | | | | | | | | |
| Employment | 182,584 | 183,746 | 178,628 | 161,617 | 168,641 | | | | | | | | |
| Unemployment | 9,426 | 8,969 | 12,489 | 22,066 | 14,799 | | | | | | | | |
| Unemployment rate | 4.9 | 4.7 | 6.5 | 12.0 | 8.1 | | | | | | | | |

Adjusted to the Current Population Survey (CPS 2020) to reflect place of residence

Equal Opportunity Employer/ Program available in alternative format/ reasonable accommodations: 602-771-1110, TDD 1-800-367-8939

Labor Force

Prepared in Cooperation with the U.S. Department of Labor, Bureau of Labor Statistics
Arizona Office of Economic Opportunity

2020

Santa Cruz County

| | JAN | FEB | MAR | APR | MAY | JUN | JUL | AUG | SEP | OCT | NOV | DEC | AVG |
|----------------------|--------|--------|--------|--------|--------|-----|-----|-----|-----|-----|-----|-----|-----|
| Civilian Labor Force | 20,067 | 19,873 | 20,149 | 19,320 | 18,759 | | | | | | | | |
| Employment | 18,466 | 18,442 | 18,038 | 16,248 | 16,740 | | | | | | | | |
| Unemployment | 1,601 | 1,431 | 2,111 | 3,072 | 2,019 | | | | | | | | |
| Unemployment rate | 8.0 | 7.2 | 10.5 | 15.9 | 10.8 | | | | | | | | |

Adjusted to the Current Population Survey (CPS 2020) to reflect place of residence

Equal Opportunity Employer/ Program available in alternative format/ reasonable accommodations: 602-771-1110, TDD 1-800-367-8939

Labor Force

Prepared in Cooperation with the U.S. Department of Labor, Bureau of Labor Statistics
Arizona Office of Economic Opportunity

2020

Yavapai County(Prescott MSA)

| | JAN | FEB | MAR | APR | MAY | JUN | JUL | AUG | SEP | OCT | NOV | DEC | AVG |
|----------------------|---------|---------|---------|---------|---------|-----|-----|-----|-----|-----|-----|-----|-----|
| Civilian Labor Force | 107,379 | 108,048 | 106,535 | 109,749 | 109,463 | | | | | | | | |
| Employment | 102,552 | 103,465 | 100,271 | 94,226 | 100,204 | | | | | | | | |
| Unemployment | 4,827 | 4,583 | 6,264 | 15,523 | 9,259 | | | | | | | | |
| Unemployment rate | 4.5 | 4.2 | 5.9 | 14.1 | 8.5 | | | | | | | | |

Adjusted to the Current Population Survey (CPS 2020) to reflect place of residence

Equal Opportunity Employer/ Program available in alternative format/ reasonable accommodations: 602-771-1110, TDD 1-800-367-8939

Labor Force

Prepared in Cooperation with the U.S. Department of Labor, Bureau of Labor Statistics
Arizona Office of Economic Opportunity

2020

Yuma County(Yuma MSA)

| | JAN | FEB | MAR | APR | MAY | JUN | JUL | AUG | SEP | OCT | NOV | DEC | AVG |
|----------------------|---------|--------|---------|--------|--------|-----|-----|-----|-----|-----|-----|-----|-----|
| Civilian Labor Force | 100,806 | 98,881 | 103,472 | 96,910 | 92,493 | | | | | | | | |
| Employment | 87,020 | 87,010 | 86,192 | 73,904 | 76,013 | | | | | | | | |
| Unemployment | 13,786 | 11,871 | 17,280 | 23,006 | 16,480 | | | | | | | | |
| Unemployment rate | 13.7 | 12.0 | 16.7 | 23.7 | 17.8 | | | | | | | | |

Adjusted to the Current Population Survey (CPS 2020) to reflect place of residence

Equal Opportunity Employer/ Program available in alternative format/ reasonable accommodations: 602-771-1110, TDD 1-800-367-8939

Nonfarm Employment

Prepared in Cooperation with the U.S. Department of Labor, Bureau of Labor Statistics
Arizona Office of Economic Opportunity

2020

Apache County

| | JAN | FEB | MAR | APR | MAY | JUN | JUL | AUG | SEP | OCT | NOV | DEC | AVG |
|--------------------------------------|--------|--------|--------|--------|--------|-----|-----|-----|-----|-----|-----|-----|-----|
| Total Nonfarm | 17,900 | 18,000 | 18,025 | 16,875 | 16,800 | | | | | | | | |
| Total Private | 7,325 | 7,375 | 7,425 | 6,625 | 6,650 | | | | | | | | |
| Goods Producing | 550 | 575 | 600 | 375 | 375 | | | | | | | | |
| Service-Providing | 17,350 | 17,425 | 17,425 | 16,500 | 16,425 | | | | | | | | |
| Private Service-Providing | 6,775 | 6,800 | 6,825 | 6,250 | 6,275 | | | | | | | | |
| Trade, Transportation, and Utilities | 1,925 | 1,925 | 1,950 | 1,825 | 1,850 | | | | | | | | |
| Other Private Service-Providing | 4,850 | 4,875 | 4,875 | 4,425 | 4,425 | | | | | | | | |
| Government | 10,575 | 10,625 | 10,600 | 10,250 | 10,150 | | | | | | | | |
| Federal Government | 2,525 | 2,550 | 2,575 | 2,525 | 2,575 | | | | | | | | |
| State and Local Government | 8,050 | 8,075 | 8,025 | 7,725 | 7,575 | | | | | | | | |

Benchmark year 2019, quarter 1, rev. 6/11/2020

Equal Opportunity Employer/ Program available in alternative format/ reasonable accomodations: 602-771-1110, TDD 1-800-367-8939

Nonfarm Employment

Prepared in Cooperation with the U.S. Department of Labor, Bureau of Labor Statistics
Arizona Office of Economic Opportunity

2020

Cochise County(Sierra-Vista Douglas MSA)

| | JAN | FEB | MAR | APR | MAY | JUN | JUL | AUG | SEP | OCT | NOV | DEC | AVG |
|--------------------------------------|--------|--------|--------|--------|--------|-----|-----|-----|-----|-----|-----|-----|-----|
| Total Nonfarm | 34,400 | 34,900 | 34,900 | 32,400 | 33,400 | | | | | | | | |
| Total Private | 23,100 | 23,400 | 23,500 | 21,200 | 22,100 | | | | | | | | |
| Goods Producing | 2,500 | 2,500 | 2,500 | 2,200 | 2,500 | | | | | | | | |
| Mining and Construction | 1,900 | 1,900 | 1,900 | 1,700 | 1,900 | | | | | | | | |
| Manufacturing | 600 | 600 | 600 | 500 | 600 | | | | | | | | |
| Service-Providing | 31,900 | 32,400 | 32,400 | 30,200 | 30,900 | | | | | | | | |
| Private Service-Providing | 20,600 | 20,900 | 21,000 | 19,000 | 19,600 | | | | | | | | |
| Trade, Transportation, and Utilities | 5,800 | 5,800 | 5,900 | 5,800 | 6,300 | | | | | | | | |
| Information | 300 | 400 | 400 | 300 | 300 | | | | | | | | |
| Financial Activities | 800 | 800 | 800 | 800 | 800 | | | | | | | | |
| Professional and Business Services | 4,900 | 4,900 | 5,000 | 4,600 | 4,500 | | | | | | | | |
| Educational and Health Services | 4,500 | 4,600 | 4,500 | 4,000 | 4,100 | | | | | | | | |
| Leisure and Hospitality | 3,600 | 3,700 | 3,700 | 3,000 | 3,000 | | | | | | | | |
| Other Services | 700 | 700 | 700 | 500 | 600 | | | | | | | | |

| | | | | | |
|----------------------------|--------|--------|--------|--------|--------|
| Government | 11,300 | 11,500 | 11,400 | 11,200 | 11,300 |
| Federal Government | 4,800 | 4,800 | 4,900 | 4,900 | 5,100 |
| State and Local Government | 6,500 | 6,700 | 6,500 | 6,300 | 6,200 |

Benchmark year 2019, quarter 1, rev. 6/11/2020

Equal Opportunity Employer/ Program available in alternative format/ reasonable accomodations: 602-771-1110, TDD 1-800-367-8939

Nonfarm Employment

Prepared in Cooperation with the U.S. Department of Labor, Bureau of Labor Statistics

Arizona Office of Economic Opportunity

2020

Coconino County(Flagstaff MSA)

| | JAN | FEB | MAR | APR | MAY | JUN | JUL | AUG | SEP | OCT | NOV | DEC | AVG |
|--------------------------------------|--------|--------|--------|--------|--------|-----|-----|-----|-----|-----|-----|-----|-----|
| Total Nonfarm | 67,200 | 67,600 | 67,100 | 55,600 | 56,600 | | | | | | | | |
| Total Private | 47,000 | 47,300 | 46,800 | 35,600 | 38,100 | | | | | | | | |
| Goods Producing | 6,100 | 6,100 | 6,100 | 5,600 | 5,900 | | | | | | | | |
| Mining and Construction | 2,300 | 2,300 | 2,300 | 2,100 | 2,300 | | | | | | | | |
| Manufacturing | 3,800 | 3,800 | 3,800 | 3,500 | 3,600 | | | | | | | | |
| Service-Providing | 61,100 | 61,500 | 61,000 | 50,000 | 50,700 | | | | | | | | |
| Private Service-Providing | 40,900 | 41,200 | 40,700 | 30,000 | 32,200 | | | | | | | | |
| Trade, Transportation, and Utilities | 9,400 | 9,400 | 9,300 | 8,700 | 8,600 | | | | | | | | |
| Information | 400 | 400 | 400 | 400 | 400 | | | | | | | | |
| Financial Activities | 1,500 | 1,500 | 1,500 | 1,500 | 1,500 | | | | | | | | |
| Professional and Business Services | 3,300 | 3,400 | 3,500 | 3,300 | 3,500 | | | | | | | | |
| Educational and Health Services | 9,600 | 9,700 | 9,600 | 8,800 | 8,900 | | | | | | | | |
| Leisure and Hospitality | 14,900 | 15,000 | 14,600 | 5,900 | 7,800 | | | | | | | | |
| Other Services | 1,800 | 1,800 | 1,800 | 1,400 | 1,500 | | | | | | | | |
| Government | 20,200 | 20,300 | 20,300 | 20,000 | 18,500 | | | | | | | | |
| Federal Government | 2,400 | 2,400 | 2,400 | 2,600 | 2,600 | | | | | | | | |
| State and Local Government | 17,800 | 17,900 | 17,900 | 17,400 | 15,900 | | | | | | | | |

Benchmark year 2019, quarter 1, rev. 6/11/2020

Equal Opportunity Employer/ Program available in alternative format/ reasonable accomodations: 602-771-1110, TDD 1-800-367-8939

Nonfarm Employment

Prepared in Cooperation with the U.S. Department of Labor, Bureau of Labor Statistics

Arizona Office of Economic Opportunity

2020

Gila County

| | JAN | FEB | MAR | APR | MAY | JUN | JUL | AUG | SEP | OCT | NOV | DEC | AVG |
|---------------|--------|--------|--------|--------|--------|-----|-----|-----|-----|-----|-----|-----|-----|
| Total Nonfarm | 14,775 | 14,925 | 14,850 | 14,125 | 14,175 | | | | | | | | |

| | | | | | |
|--------------------------------------|--------|--------|--------|--------|--------|
| Total Private | 9,350 | 9,400 | 9,400 | 8,625 | 8,700 |
| Goods Producing | 2,875 | 2,875 | 2,875 | 2,800 | 2,800 |
| Service-Providing | 11,900 | 12,050 | 11,975 | 11,325 | 11,375 |
| Private Service-Providing | 6,475 | 6,525 | 6,525 | 5,825 | 5,900 |
| Trade, Transportation, and Utilities | 2,075 | 2,075 | 2,075 | 1,975 | 2,025 |
| Other Private Service-Providing | 4,400 | 4,450 | 4,450 | 3,850 | 3,875 |
| Government | 5,425 | 5,525 | 5,450 | 5,500 | 5,475 |
| Federal Government | 225 | 250 | 250 | 250 | 250 |
| State and Local Government | 5,200 | 5,275 | 5,200 | 5,250 | 5,225 |

Benchmark year 2019, quarter 1, rev. 6/11/2020

Equal Opportunity Employer/ Program available in alternative format/ reasonable accommodations: 602-771-1110, TDD 1-800-367-8939

Nonfarm Employment

Prepared in Cooperation with the U.S. Department of Labor, Bureau of Labor Statistics

Arizona Office of Economic Opportunity

2020

Graham County

| | JAN | FEB | MAR | APR | MAY | JUN | JUL | AUG | SEP | OCT | NOV | DEC | AVG |
|--------------------------------------|-------|-------|-------|-------|-------|-----|-----|-----|-----|-----|-----|-----|-----|
| Total Nonfarm | 9,175 | 9,500 | 9,525 | 9,200 | 9,125 | | | | | | | | |
| Total Private | 6,425 | 6,475 | 6,500 | 6,225 | 6,225 | | | | | | | | |
| Goods Producing | 1,875 | 1,900 | 1,900 | 1,850 | 1,850 | | | | | | | | |
| Service-Providing | 7,300 | 7,600 | 7,625 | 7,350 | 7,275 | | | | | | | | |
| Private Service-Providing | 4,550 | 4,575 | 4,600 | 4,375 | 4,375 | | | | | | | | |
| Trade, Transportation, and Utilities | 1,775 | 1,775 | 1,775 | 1,750 | 1,750 | | | | | | | | |
| Other Private Service-Providing | 2,775 | 2,800 | 2,825 | 2,625 | 2,625 | | | | | | | | |
| Government | 2,750 | 3,025 | 3,025 | 2,975 | 2,900 | | | | | | | | |
| Federal Government | 375 | 375 | 375 | 375 | 375 | | | | | | | | |
| State and Local Government | 2,375 | 2,650 | 2,650 | 2,600 | 2,525 | | | | | | | | |

Benchmark year 2019, quarter 1, rev. 6/11/2020

Equal Opportunity Employer/ Program available in alternative format/ reasonable accommodations: 602-771-1110, TDD 1-800-367-8939

Nonfarm Employment

Prepared in Cooperation with the U.S. Department of Labor, Bureau of Labor Statistics

Arizona Office of Economic Opportunity

2020

Greenlee County

| | JAN | FEB | MAR | APR | MAY | JUN | JUL | AUG | SEP | OCT | NOV | DEC | AVG |
|---------------|-------|-------|-------|-------|-------|-----|-----|-----|-----|-----|-----|-----|-----|
| Total Nonfarm | 5,225 | 5,250 | 5,250 | 5,250 | 5,275 | | | | | | | | |
| Total Private | 4,650 | 4,675 | 4,675 | 4,675 | 4,700 | | | | | | | | |

| | | | | | |
|--------------------------------------|-------|-------|-------|-------|-------|
| Goods Producing | 3,725 | 3,750 | 3,750 | 3,725 | 3,750 |
| Service-Providing | 1,500 | 1,500 | 1,500 | 1,525 | 1,525 |
| Private Service-Providing | 925 | 925 | 925 | 950 | 950 |
| Trade, Transportation, and Utilities | 500 | 500 | 500 | 500 | 500 |
| Other Private Service-Providing | 425 | 425 | 425 | 450 | 450 |
| Government | 575 | 575 | 575 | 575 | 575 |
| Federal Government | 25 | 25 | 25 | 25 | 25 |
| State and Local Government | 550 | 550 | 550 | 550 | 550 |

Benchmark year 2019, quarter 1, rev. 6/11/2020

Equal Opportunity Employer/ Program available in alternative format/ reasonable accommodations: 602-771-1110, TDD 1-800-367-8939

Nonfarm Employment

Prepared in Cooperation with the U.S. Department of Labor, Bureau of Labor Statistics

Arizona Office of Economic Opportunity

2020

La Paz County

| | JAN | FEB | MAR | APR | MAY | JUN | JUL | AUG | SEP | OCT | NOV | DEC | AVG |
|--------------------------------------|-------|-------|-------|-------|-------|-----|-----|-----|-----|-----|-----|-----|-----|
| Total Nonfarm | 5,800 | 5,900 | 5,875 | 5,700 | 5,675 | | | | | | | | |
| Total Private | 3,475 | 3,575 | 3,575 | 3,400 | 3,375 | | | | | | | | |
| Goods Producing | 200 | 225 | 225 | 225 | 225 | | | | | | | | |
| Service-Providing | 5,600 | 5,675 | 5,650 | 5,475 | 5,450 | | | | | | | | |
| Private Service-Providing | 3,275 | 3,350 | 3,350 | 3,175 | 3,150 | | | | | | | | |
| Trade, Transportation, and Utilities | 1,675 | 1,700 | 1,700 | 1,650 | 1,650 | | | | | | | | |
| Other Private Service-Providing | 1,600 | 1,650 | 1,650 | 1,525 | 1,500 | | | | | | | | |
| Government | 2,325 | 2,325 | 2,300 | 2,300 | 2,300 | | | | | | | | |
| Federal Government | 375 | 350 | 350 | 350 | 350 | | | | | | | | |
| State and Local Government | 1,950 | 1,975 | 1,950 | 1,950 | 1,950 | | | | | | | | |

Benchmark year 2019, quarter 1, rev. 6/11/2020

Equal Opportunity Employer/ Program available in alternative format/ reasonable accommodations: 602-771-1110, TDD 1-800-367-8939

Nonfarm Employment

Prepared in Cooperation with the U.S. Department of Labor, Bureau of Labor Statistics

Arizona Office of Economic Opportunity

2020

Maricopa County

| | JAN | FEB | MAR | APR | MAY | JUN | JUL | AUG | SEP | OCT | NOV | DEC | AVG |
|-----------------|-----------|-----------|-----------|-----------|-----------|-----|-----|-----|-----|-----|-----|-----|-----|
| Total Nonfarm | 2,152,100 | 2,167,100 | 2,153,800 | 1,960,100 | 1,990,400 | | | | | | | | |
| Total Private | 1,918,700 | 1,930,200 | 1,919,000 | 1,728,900 | 1,769,300 | | | | | | | | |
| Goods Producing | 264,600 | 266,800 | 266,400 | 255,200 | 254,900 | | | | | | | | |

| | | | | | |
|--------------------------------------|-----------|-----------|-----------|-----------|-----------|
| Mining and Construction | 135,300 | 137,600 | 136,800 | 134,500 | 134,700 |
| Manufacturing | 129,300 | 129,200 | 129,600 | 120,700 | 120,200 |
| Service-Providing | 1,887,500 | 1,900,300 | 1,887,400 | 1,704,900 | 1,735,500 |
| Private Service-Providing | 1,654,100 | 1,663,400 | 1,652,600 | 1,473,700 | 1,514,400 |
| Trade, Transportation, and Utilities | 405,900 | 405,100 | 407,000 | 382,300 | 389,700 |
| Information | 40,100 | 40,200 | 39,800 | 36,900 | 37,000 |
| Financial Activities | 203,000 | 203,200 | 200,900 | 200,200 | 200,800 |
| Professional and Business Services | 365,300 | 364,600 | 361,000 | 336,600 | 332,400 |
| Educational and Health Services | 342,200 | 346,200 | 345,200 | 315,900 | 321,700 |
| Leisure and Hospitality | 228,800 | 235,600 | 229,400 | 141,800 | 166,700 |
| Other Services | 68,800 | 68,500 | 69,300 | 60,000 | 66,100 |
| Government | 233,400 | 236,900 | 234,800 | 231,200 | 221,100 |
| Federal Government | 22,000 | 21,900 | 22,200 | 22,600 | 22,500 |
| State and Local Government | 211,400 | 215,000 | 212,600 | 208,600 | 198,600 |

Benchmark year 2019, quarter 1, rev. 6/11/2020

Equal Opportunity Employer/ Program available in alternative format/ reasonable accommodations: 602-771-1110, TDD 1-800-367-8939

Nonfarm Employment

Prepared in Cooperation with the U.S. Department of Labor, Bureau of Labor Statistics

Arizona Office of Economic Opportunity

2020

Mohave County(Lake Havasu City-Kingman MSA)

| | JAN | FEB | MAR | APR | MAY | JUN | JUL | AUG | SEP | OCT | NOV | DEC | AVG |
|--------------------------------------|--------|--------|--------|--------|--------|-----|-----|-----|-----|-----|-----|-----|-----|
| Total Nonfarm | 52,600 | 53,400 | 52,700 | 45,700 | 47,000 | | | | | | | | |
| Total Private | 44,300 | 44,700 | 44,500 | 37,500 | 38,800 | | | | | | | | |
| Goods Producing | 6,400 | 6,500 | 6,500 | 6,100 | 6,500 | | | | | | | | |
| Mining and Construction | 3,300 | 3,400 | 3,400 | 3,100 | 3,400 | | | | | | | | |
| Manufacturing | 3,100 | 3,100 | 3,100 | 3,000 | 3,100 | | | | | | | | |
| Service-Providing | 46,200 | 46,900 | 46,200 | 39,600 | 40,500 | | | | | | | | |
| Private Service-Providing | 37,900 | 38,200 | 38,000 | 31,400 | 32,300 | | | | | | | | |
| Trade, Transportation, and Utilities | 12,800 | 12,800 | 12,800 | 12,100 | 12,300 | | | | | | | | |
| Information | 500 | 500 | 500 | 500 | 500 | | | | | | | | |
| Financial Activities | 1,800 | 1,800 | 1,800 | 1,800 | 1,800 | | | | | | | | |
| Professional and Business Services | 4,400 | 4,500 | 4,600 | 3,300 | 3,300 | | | | | | | | |
| Educational and Health Services | 9,200 | 9,300 | 9,000 | 8,600 | 8,700 | | | | | | | | |
| Leisure and Hospitality | 7,300 | 7,400 | 7,400 | 3,600 | 4,100 | | | | | | | | |
| Other Services | 1,900 | 1,900 | 1,900 | 1,500 | 1,600 | | | | | | | | |
| Government | 8,300 | 8,700 | 8,200 | 8,200 | 8,200 | | | | | | | | |
| Federal Government | 500 | 500 | 500 | 500 | 500 | | | | | | | | |
| State and Local Government | 7,800 | 8,200 | 7,700 | 7,700 | 7,700 | | | | | | | | |

Benchmark year 2019, quarter 1, rev. 6/11/2020

Equal Opportunity Employer/ Program available in alternative format/ reasonable accommodations: 602-771-1110, TDD 1-800-367-8939

Nonfarm Employment

Prepared in Cooperation with the U.S. Department of Labor, Bureau of Labor Statistics

Arizona Office of Economic Opportunity

2020

Navajo County

| | JAN | FEB | MAR | APR | MAY | JUN | JUL | AUG | SEP | OCT | NOV | DEC | AVG |
|--------------------------------------|--------|--------|--------|--------|--------|-----|-----|-----|-----|-----|-----|-----|-----|
| Total Nonfarm | 26,625 | 26,800 | 26,950 | 25,125 | 25,425 | | | | | | | | |
| Total Private | 17,075 | 17,150 | 17,200 | 15,675 | 15,875 | | | | | | | | |
| Goods Producing | 1,825 | 1,850 | 1,800 | 1,475 | 1,500 | | | | | | | | |
| Mining and Construction | 1,525 | 1,525 | 1,500 | 1,250 | 1,275 | | | | | | | | |
| Manufacturing | 300 | 325 | 300 | 225 | 225 | | | | | | | | |
| Service-Providing | 24,800 | 24,950 | 25,150 | 23,650 | 23,925 | | | | | | | | |
| Private Service-Providing | 15,250 | 15,300 | 15,400 | 14,200 | 14,375 | | | | | | | | |
| Trade, Transportation, and Utilities | 4,500 | 4,525 | 4,525 | 4,325 | 4,400 | | | | | | | | |
| Information | 250 | 250 | 250 | 250 | 225 | | | | | | | | |
| Financial Activities | 625 | 625 | 625 | 475 | 475 | | | | | | | | |
| Professional and Business Services | 1,175 | 1,175 | 1,200 | 1,075 | 1,075 | | | | | | | | |
| Educational and Health Services | 4,675 | 4,675 | 4,675 | 4,450 | 4,450 | | | | | | | | |
| Leisure and Hospitality | 3,500 | 3,525 | 3,575 | 3,150 | 3,275 | | | | | | | | |
| Other Services | 525 | 525 | 550 | 475 | 475 | | | | | | | | |
| Government | 9,550 | 9,650 | 9,750 | 9,450 | 9,550 | | | | | | | | |
| Federal Government | 1,750 | 1,775 | 1,850 | 1,775 | 1,850 | | | | | | | | |
| State and Local Government | 7,800 | 7,875 | 7,900 | 7,675 | 7,700 | | | | | | | | |

Benchmark year 2019, quarter 1, rev. 6/11/2020

Equal Opportunity Employer/ Program available in alternative format/ reasonable accommodations: 602-771-1110, TDD 1-800-367-8939

Nonfarm Employment

Prepared in Cooperation with the U.S. Department of Labor, Bureau of Labor Statistics

Arizona Office of Economic Opportunity

2020

Pima County(Tucson MSA)

| | JAN | FEB | MAR | APR | MAY | JUN | JUL | AUG | SEP | OCT | NOV | DEC | AVG |
|-------------------------|---------|---------|---------|---------|---------|-----|-----|-----|-----|-----|-----|-----|-----|
| Total Nonfarm | 391,100 | 395,600 | 393,200 | 361,300 | 368,800 | | | | | | | | |
| Total Private | 309,600 | 312,300 | 310,800 | 280,300 | 289,400 | | | | | | | | |
| Goods Producing | 47,400 | 47,600 | 47,100 | 45,900 | 47,600 | | | | | | | | |
| Mining and Construction | 19,800 | 20,000 | 19,800 | 18,700 | 20,500 | | | | | | | | |
| Manufacturing | 27,600 | 27,600 | 27,300 | 27,200 | 27,100 | | | | | | | | |

| | | | | | |
|--------------------------------------|---------|---------|---------|---------|---------|
| Service-Providing | 343,700 | 348,000 | 346,100 | 315,400 | 321,200 |
| Private Service-Providing | 262,200 | 264,700 | 263,700 | 234,400 | 241,800 |
| Trade, Transportation, and Utilities | 62,700 | 62,400 | 63,000 | 60,500 | 61,300 |
| Information | 5,400 | 5,600 | 5,500 | 3,900 | 3,900 |
| Financial Activities | 17,100 | 17,500 | 17,400 | 17,000 | 16,500 |
| Professional and Business Services | 50,400 | 50,900 | 50,100 | 46,600 | 46,900 |
| Educational and Health Services | 69,400 | 69,900 | 69,500 | 64,000 | 65,000 |
| Leisure and Hospitality | 43,500 | 44,600 | 44,300 | 30,900 | 35,300 |
| Other Services | 13,700 | 13,800 | 13,900 | 11,500 | 12,900 |
| Government | 81,500 | 83,300 | 82,400 | 81,000 | 79,400 |
| Federal Government | 13,000 | 13,000 | 13,100 | 13,100 | 13,100 |
| State and Local Government | 68,500 | 70,300 | 69,300 | 67,900 | 66,300 |

Benchmark year 2019, quarter 1, rev. 6/11/2020

Equal Opportunity Employer/ Program available in alternative format/ reasonable accommodations: 602-771-1110, TDD 1-800-367-8939

Nonfarm Employment

Prepared in Cooperation with the U.S. Department of Labor, Bureau of Labor Statistics

Arizona Office of Economic Opportunity

2020

Pinal County

| | JAN | FEB | MAR | APR | MAY | JUN | JUL | AUG | SEP | OCT | NOV | DEC | AVG |
|--------------------------------------|--------|--------|--------|--------|--------|-----|-----|-----|-----|-----|-----|-----|-----|
| Total Nonfarm | 62,375 | 63,275 | 63,250 | 54,750 | 54,925 | | | | | | | | |
| Total Private | 42,575 | 43,100 | 43,025 | 34,725 | 34,550 | | | | | | | | |
| Goods Producing | 7,650 | 7,700 | 7,725 | 6,950 | 6,950 | | | | | | | | |
| Mining and Construction | 3,500 | 3,500 | 3,550 | 3,150 | 3,150 | | | | | | | | |
| Manufacturing | 4,150 | 4,200 | 4,175 | 3,800 | 3,800 | | | | | | | | |
| Service-Providing | 54,725 | 55,575 | 55,525 | 47,800 | 47,975 | | | | | | | | |
| Private Service-Providing | 34,925 | 35,400 | 35,300 | 27,775 | 27,600 | | | | | | | | |
| Trade, Transportation, and Utilities | 11,250 | 11,275 | 11,350 | 9,575 | 9,600 | | | | | | | | |
| Information | 575 | 575 | 575 | 450 | 450 | | | | | | | | |
| Financial Activities | 1,550 | 1,550 | 1,575 | 1,275 | 1,250 | | | | | | | | |
| Professional and Business Services | 6,725 | 6,700 | 6,725 | 5,525 | 5,475 | | | | | | | | |
| Educational and Health Services | 6,850 | 6,925 | 6,975 | 5,675 | 5,725 | | | | | | | | |
| Leisure and Hospitality | 6,300 | 6,675 | 6,425 | 4,175 | 3,975 | | | | | | | | |
| Other Services | 1,675 | 1,700 | 1,675 | 1,100 | 1,125 | | | | | | | | |
| Government | 19,800 | 20,175 | 20,225 | 20,025 | 20,375 | | | | | | | | |
| Federal Government | 1,475 | 1,450 | 1,450 | 1,375 | 1,375 | | | | | | | | |
| State and Local Government | 18,325 | 18,725 | 18,775 | 18,650 | 19,000 | | | | | | | | |

Benchmark year 2019, quarter 1, rev. 6/11/2020

Equal Opportunity Employer/ Program available in alternative format/ reasonable accommodations: 602-771-1110, TDD 1-800-367-8939

Nonfarm Employment

Prepared in Cooperation with the U.S. Department of Labor, Bureau of Labor Statistics
Arizona Office of Economic Opportunity

2020

Santa Cruz County

| | JAN | FEB | MAR | APR | MAY | JUN | JUL | AUG | SEP | OCT | NOV | DEC | AVG |
|--------------------------------------|--------|--------|--------|--------|--------|-----|-----|-----|-----|-----|-----|-----|-----|
| Total Nonfarm | 13,475 | 13,500 | 13,475 | 12,175 | 12,175 | | | | | | | | |
| Total Private | 9,700 | 9,700 | 9,675 | 8,375 | 8,400 | | | | | | | | |
| Goods Producing | 700 | 675 | 675 | 550 | 550 | | | | | | | | |
| Service-Providing | 12,775 | 12,825 | 12,800 | 11,625 | 11,625 | | | | | | | | |
| Private Service-Providing | 9,000 | 9,025 | 9,000 | 7,825 | 7,850 | | | | | | | | |
| Trade, Transportation, and Utilities | 5,650 | 5,625 | 5,600 | 5,075 | 5,125 | | | | | | | | |
| Other Private Service-Providing | 3,350 | 3,400 | 3,400 | 2,750 | 2,725 | | | | | | | | |
| Government | 3,775 | 3,800 | 3,800 | 3,800 | 3,775 | | | | | | | | |
| Federal Government | 1,725 | 1,725 | 1,725 | 1,725 | 1,700 | | | | | | | | |
| State and Local Government | 2,050 | 2,075 | 2,075 | 2,075 | 2,075 | | | | | | | | |

Benchmark year 2019, quarter 1, rev. 6/11/2020

Equal Opportunity Employer/ Program available in alternative format/ reasonable accomodations: 602-771-1110, TDD 1-800-367-8939

Nonfarm Employment

Prepared in Cooperation with the U.S. Department of Labor, Bureau of Labor Statistics
Arizona Office of Economic Opportunity

2020

Yavapai County(Prescott MSA)

| | JAN | FEB | MAR | APR | MAY | JUN | JUL | AUG | SEP | OCT | NOV | DEC | AVG |
|--------------------------------------|--------|--------|--------|--------|--------|-----|-----|-----|-----|-----|-----|-----|-----|
| Total Nonfarm | 65,400 | 66,200 | 65,800 | 62,100 | 64,100 | | | | | | | | |
| Total Private | 54,300 | 54,700 | 54,400 | 50,800 | 53,000 | | | | | | | | |
| Goods Producing | 9,800 | 9,900 | 9,900 | 9,700 | 9,900 | | | | | | | | |
| Mining and Construction | 6,100 | 6,200 | 6,200 | 6,200 | 6,300 | | | | | | | | |
| Manufacturing | 3,700 | 3,700 | 3,700 | 3,500 | 3,600 | | | | | | | | |
| Service-Providing | 55,600 | 56,300 | 55,900 | 52,400 | 54,200 | | | | | | | | |
| Private Service-Providing | 44,500 | 44,800 | 44,500 | 41,100 | 43,100 | | | | | | | | |
| Trade, Transportation, and Utilities | 12,500 | 12,400 | 12,400 | 12,300 | 12,400 | | | | | | | | |
| Information | 500 | 500 | 500 | 500 | 500 | | | | | | | | |
| Financial Activities | 2,100 | 2,100 | 2,100 | 2,100 | 2,100 | | | | | | | | |
| Professional and Business Services | 4,400 | 4,500 | 4,400 | 4,200 | 4,300 | | | | | | | | |
| Educational and Health Services | 12,500 | 12,600 | 12,500 | 11,900 | 11,800 | | | | | | | | |
| Leisure and Hospitality | 10,200 | 10,400 | 10,300 | 8,300 | 10,000 | | | | | | | | |
| Other Services | 2,300 | 2,300 | 2,300 | 1,800 | 2,000 | | | | | | | | |

| | | | | | |
|----------------------------|--------|--------|--------|--------|--------|
| Government | 11,100 | 11,500 | 11,400 | 11,300 | 11,100 |
| Federal Government | 1,500 | 1,500 | 1,600 | 1,700 | 1,700 |
| State and Local Government | 9,600 | 10,000 | 9,800 | 9,600 | 9,400 |

Benchmark year 2019, quarter 1, rev. 6/11/2020

Equal Opportunity Employer/ Program available in alternative format/ reasonable accommodations: 602-771-1110, TDD 1-800-367-8939

Nonfarm Employment

Prepared in Cooperation with the U.S. Department of Labor, Bureau of Labor Statistics

Arizona Office of Economic Opportunity

2020

Yuma County(Yuma MSA)

| | JAN | FEB | MAR | APR | MAY | JUN | JUL | AUG | SEP | OCT | NOV | DEC | AVG |
|--------------------------------------|--------|--------|--------|--------|--------|-----|-----|-----|-----|-----|-----|-----|-----|
| Total Nonfarm | 58,800 | 59,300 | 59,100 | 52,300 | 53,800 | | | | | | | | |
| Total Private | 43,900 | 44,300 | 44,100 | 37,900 | 39,500 | | | | | | | | |
| Goods Producing | 5,800 | 5,900 | 5,900 | 5,500 | 5,800 | | | | | | | | |
| Mining and Construction | 3,000 | 3,100 | 3,100 | 2,700 | 3,000 | | | | | | | | |
| Manufacturing | 2,800 | 2,800 | 2,800 | 2,800 | 2,800 | | | | | | | | |
| Service-Providing | 53,000 | 53,400 | 53,200 | 46,800 | 48,000 | | | | | | | | |
| Private Service-Providing | 38,100 | 38,400 | 38,200 | 32,400 | 33,700 | | | | | | | | |
| Trade, Transportation, and Utilities | 12,200 | 12,300 | 12,200 | 11,200 | 11,200 | | | | | | | | |
| Information | 400 | 400 | 400 | 400 | 400 | | | | | | | | |
| Financial Activities | 2,100 | 2,100 | 2,100 | 2,000 | 2,000 | | | | | | | | |
| Professional and Business Services | 6,300 | 6,300 | 6,400 | 5,500 | 5,400 | | | | | | | | |
| Educational and Health Services | 8,600 | 8,600 | 8,500 | 7,800 | 7,600 | | | | | | | | |
| Leisure and Hospitality | 6,700 | 6,900 | 6,800 | 3,900 | 5,400 | | | | | | | | |
| Other Services | 1,800 | 1,800 | 1,800 | 1,600 | 1,700 | | | | | | | | |
| Government | 14,900 | 15,000 | 15,000 | 14,400 | 14,300 | | | | | | | | |
| Federal Government | 3,700 | 3,700 | 3,700 | 3,700 | 3,700 | | | | | | | | |
| State and Local Government | 11,200 | 11,300 | 11,300 | 10,700 | 10,600 | | | | | | | | |

Benchmark year 2019, quarter 1, rev. 6/11/2020

Equal Opportunity Employer/ Program available in alternative format/ reasonable accommodations: 602-771-1110, TDD 1-800-367-8939

About This Publication

Arizona's Workforce is published 14 times a year by the State of Arizona Office of Economic Opportunity (OEO) — 12 times as the monthly Employment Report and twice a year as a two-year Forecast Report. OEO is the state agency responsible for labor market information and demographic data for the state of Arizona.

Material published in *Arizona's Workforce* is in the public domain and can be reproduced without further permission. Appropriate citations are requested.

Next Release:

June Employment Report, Thursday, July 16th, 2020, 10:00 am

Location: ACA Conference Rooms, Camelback, 100 North 7th Avenue, Phoenix, AZ 85007

Office of Economic Opportunity

| | |
|-----------------------|------------------------|
| Sandra Watson | Interim Director |
| Doug Walls | Research Administrator |
| Stephanie Faltermeier | Labor System Manager |

On the web: <https://laborstats.az.gov/>

Phone: 602-771-2222

To be placed on the *Arizona Workforce* email distribution list, or to send feedback or questions, contact:

labor.info@azstats.gov

— Equal Opportunity Employer/Program —

Under Titles VI and VII of the Civil Rights Act of 1964 (Title VI & VII), and the Americans with Disabilities Act of 1990 (ADA), Section 504 of the Rehabilitation Act of 1973, and the Age Discrimination Act of 1975, the Department prohibits discrimination in admissions, programs, services, activities, or employment based on race, color, religion, sex, national origin, age, and disability. The Department must make a reasonable accommodation to allow a person with a disability to take part in a program, service or activity. For example, this means if necessary, the Department must provide sign language interpreters for people who are deaf, a wheelchair accessible location, or enlarged print materials. It also means that the Department will take any other reasonable action that allows you to take part in and understand a program or activity, including making reasonable changes to an activity. If you believe that you will not be able to understand or take part in a program or activity because of your disability, please let us know of your disability needs in advance if at all possible. To request this document in alternative format or for further information about this policy, contact the Department of Economic Security, Division of Developmental Disabilities ADA Coordinator at 602 542-6825 ; TTY/TDD Services: 7-1-1.

This page left intentionally blank.