



OFFICE OF ECONOMIC OPPORTUNITY

Monthly Employment Report

September 17, 2020

Nonfarm Employment Increased by 79,200 Jobs Over the Month in August 2020 Arizona Unemployment Rate Decreased to 5.9%

The Arizona seasonally-adjusted unemployment rate decreased to 5.9% in August from 10.7% in July. The U.S. seasonally-adjusted unemployment rate decreased to 8.4% in August from 10.2% in July. Over the month, Arizona's seasonally-adjusted labor force decreased by 145,673 individuals or 4.1%. Over the year, labor force levels decreased by 151,444 individuals or 4.2%.

Over the Month

Arizona nonfarm employment increased by 79,200 jobs in August. Historically (2010-2019), nonfarm employment has averaged a gain of 53,900 jobs in August.

The Government sector recorded a gain of 48,800 jobs in August. The private sector recorded a gain of 30,400 jobs in August. Historically (2010-2019), private sector employment has averaged a gain of 18,200 jobs in August.

Arizona, U.S. Economic Indicators

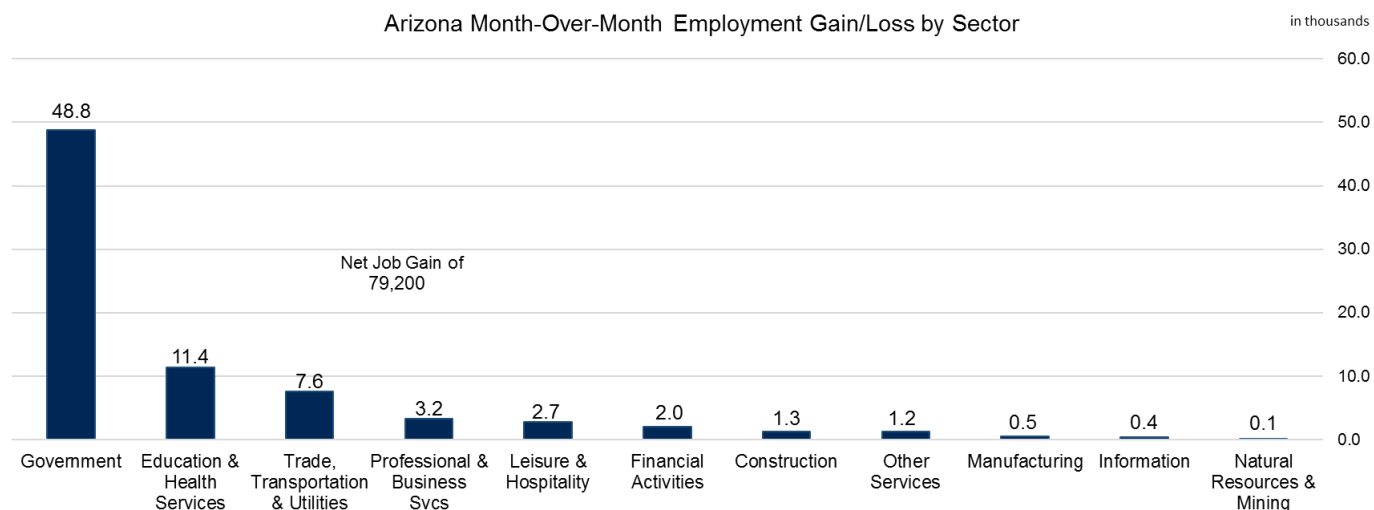
Unemployment Rate (Seasonally Adj.)

	<u>Aug '20</u>	<u>Jul '20</u>	<u>Aug '19</u>
United States	8.4%	10.2%	3.7%
Arizona	5.9%	10.7%	4.6%
Arizona (Unadj. Rate)	6.3%	11.0%	5.0%

Arizona Nonfarm Employment (in Thousands)

	<u>Aug '20</u>	<u>Jul '20</u>	<u>Aug '19</u>
Overall	2,836.2	2,757.0	2,936.4
Over-Month % Chg.	2.9%	-0.7%	2.7%
Year-to-Year % Chg.	-3.4%	-3.6%	3.2%

Arizona Month-Over-Month Employment Gain/Loss by Sector



Source: Produced by the Arizona Office of Economic Opportunity in cooperation with the U.S. Dept. of Labor, Bureau of Labor Statistics

Private sector employment gains were reported in the following sectors:

- Education and Health Services (11,400 jobs)
- Trade, Transportation and Utilities (7,600 jobs)
- Professional and Business Services (3,200 jobs)

- Leisure and Hospitality (2,700 jobs)
- Financial Activities (2,000 jobs)
- Construction (1,300 jobs)
- Other Services (1,200 jobs)
- Manufacturing (500 jobs)
- Information (400 jobs)
- Natural Resources and Mining (100 jobs)

Over the Year

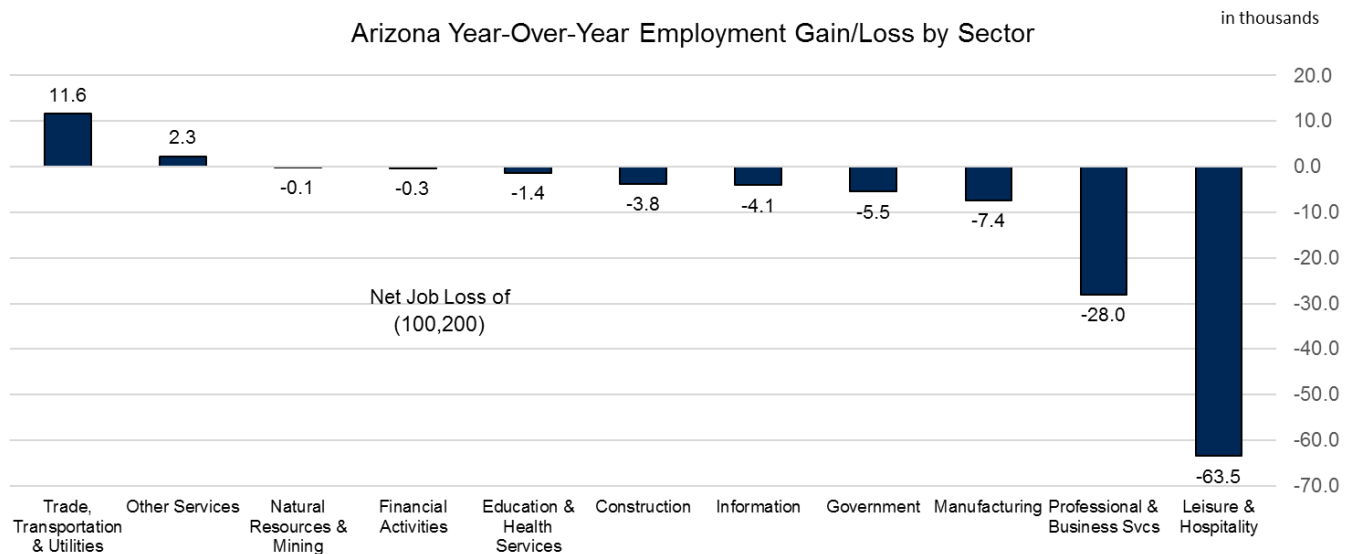
Arizona nonfarm employment decreased by 100,200 jobs or -3.4% in August. A majority of the losses were recorded in private sector employment (-94,700 jobs), while Government recorded losses of 5,500 jobs in August.

Gains were reported in:

- Trade, Transportation and Utilities (11,600 jobs)
- Other Services (2,300 jobs)

Losses were reported in:

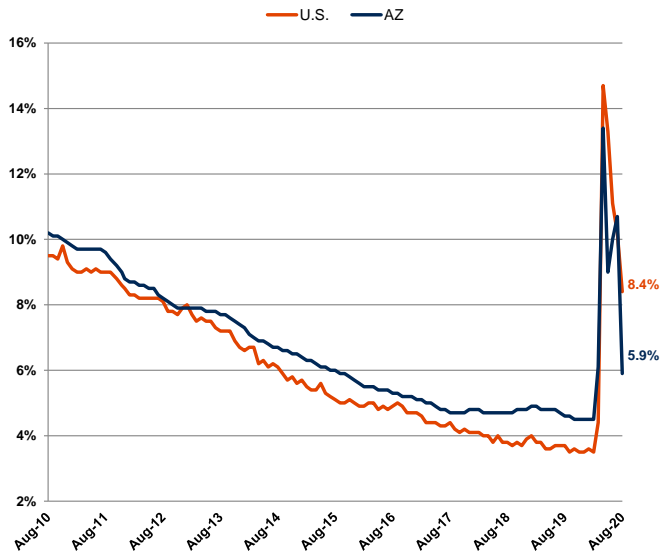
- Leisure and Hospitality (-63,500 jobs)
- Professional and Business Services (-28,000 jobs)
- Manufacturing (-7,400 jobs)
- Information (-4,100 jobs)
- Construction (-3,800 jobs)
- Education and Health Services (-1,400 jobs)
- Financial Activities (-300 jobs)
- Natural Resources and Mining (-100 jobs)



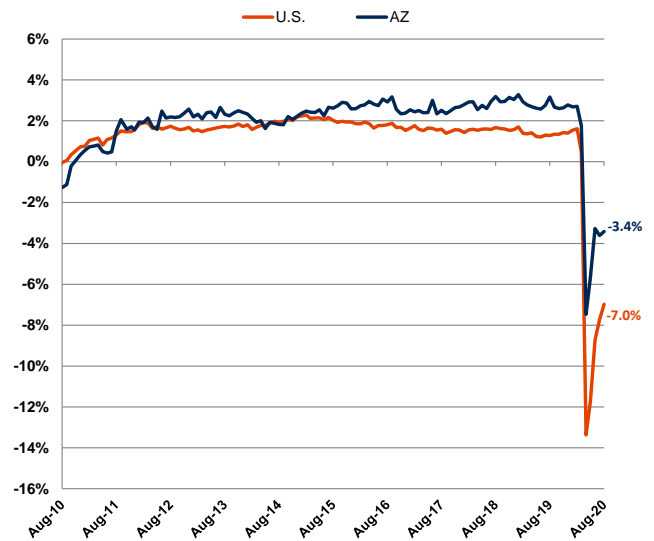
Source: Produced by the Arizona Office of Economic Opportunity in cooperation with the U.S. Dept. of Labor, Bureau of Labor Statistics

LABOR MARKET TRENDS CHARTS

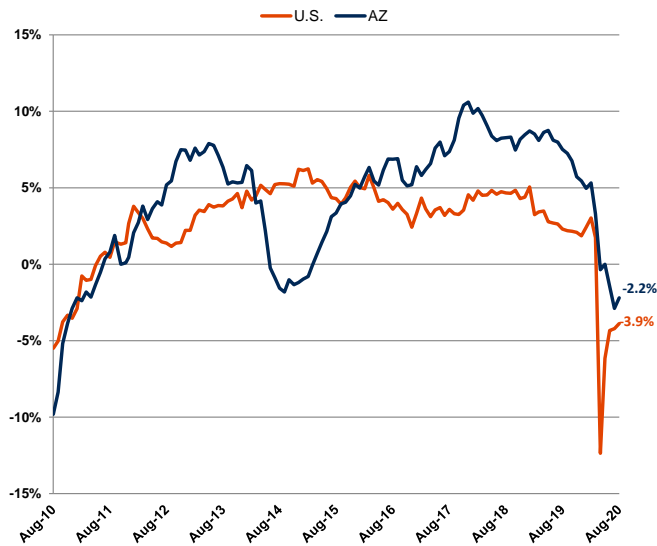
Arizona & U.S. Unemployment Rate
Seasonally Adjusted



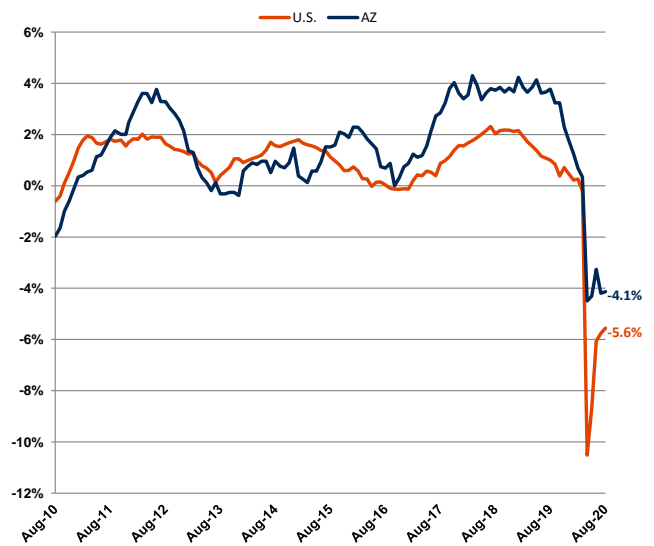
Arizona & U.S. Nonfarm Employment
Year-to-Year Percent Change



Arizona & U.S. Construction Employment
Year-to-Year Percent Change



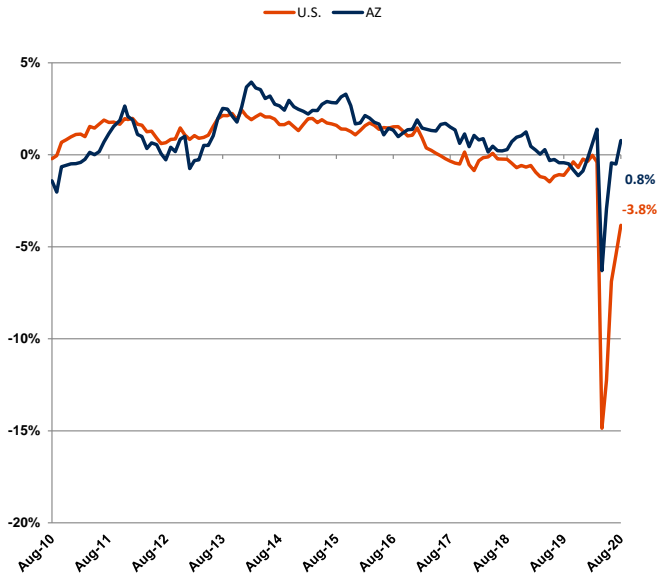
Arizona & U.S. Manufacturing Employment
Year-to-Year Percent Change



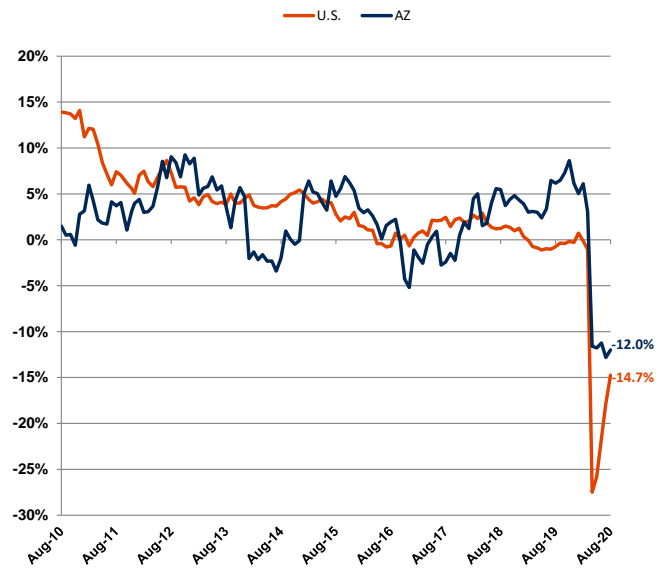
Source: Prepared by the Arizona Office of Economic Opportunity, in cooperation with the U.S. Dept. of Labor, Bureau of Labor Statistics

LABOR MARKET TRENDS CHARTS

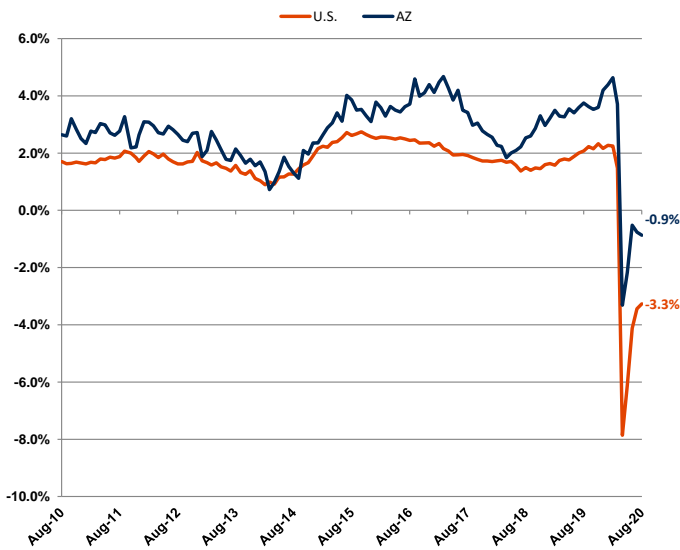
Arizona & U.S. Retail Trade
Year-to-Year Percent Change



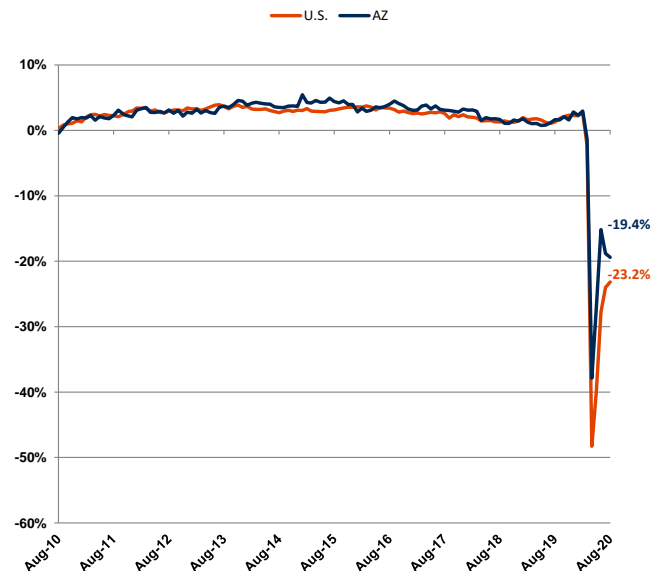
Arizona & U.S. Employment Services
Year-to-Year Percent Change



Arizona & U.S. Health Care
Year-to-Year Percent Change



Arizona & U.S. Leisure & Hospitality
Year-to-Year Percent Change



Source: Prepared by the Arizona Office of Economic Opportunity, in cooperation with the U.S. Dept. of Labor, Bureau of Labor Statistics

Table 1

Labor Force, Employment, Unemployment and Unemployment Rates^(a)

(in Thousands)

<u>ARIZONA</u>	August 2020 ^(c)	July 2020 ^(d)	August 2019 ^(d)	<u>Monthly/Yearly Change</u>	
				July '20 - August '20	August '19 - August '20
Civilian Labor Force ^(e)	3,413.3	3,563.2	3,556.1	-149.9	-142.7
Unemployment	214.3	392.6	178.4	-178.3	35.9
Unemployment Rate	6.3%	11.0%	5.0%	-4.7	1.3
Unemployment Rate (Seasonally Adjusted) ^(f)	5.9%	10.7%	4.6%	-4.8	1.3
Total Employment	3,199.0	3,170.6	3,377.7	28.4	-178.7
<u>FLAGSTAFF MSA (Coconino County)</u>					
Civilian Labor Force ^(e)	66.8	70.1	77.5	-3.2	-10.7
Unemployment	5.3	9.6	4.3	-4.3	1.0
Unemployment Rate (Unadjusted)	7.9%	13.7%	5.5%	-5.8	2.4
Total Employment	61.5	60.4	73.2	1.1	-11.7
<u>LAKE HAVASU CITY-KINGMAN MSA (Mohave County)</u>					
Civilian Labor Force ^(e)	83.4	87.9	88.1	-4.6	-4.7
Unemployment	6.2	11.1	5.1	-4.9	1.1
Unemployment Rate (Unadjusted)	7.4%	12.7%	5.8%	-5.3	1.6
Total Employment	77.2	76.8	82.9	0.4	-5.8
<u>PHOENIX-MESA-SCOTTSDALE MSA (Maricopa & Pinal Counties)</u>					
Civilian Labor Force ^(e)	2,414.1	2,518.9	2,503.2	-104.8	-89.1
Unemployment	141.7	261.9	106.4	-120.2	35.4
Unemployment Rate (Unadjusted)	5.9%	10.4%	4.2%	-4.5	1.7
Total Employment	2,272.4	2,257.0	2,396.8	15.4	-124.5
<u>PRESCOTT MSA (Yavapai County)</u>					
Civilian Labor Force ^(e)	105.4	109.6	107.4	-4.2	-2.0
Unemployment	5.7	10.5	5.0	-4.9	0.7
Unemployment Rate (Unadjusted)	5.4%	9.6%	4.6%	-4.2	0.8
Total Employment	99.7	99.1	102.4	0.7	-2.7
<u>SIERRA VISTA-DOUGLAS MSA (Cochise County)</u>					
Civilian Labor Force ^(e)	50.4	51.7	50.0	-1.3	0.4
Unemployment	2.6	4.8	3.0	-2.2	-0.4
Unemployment Rate (Unadjusted)	5.2%	9.4%	6.0%	-4.2	-0.8
Total Employment	47.7	46.9	47.0	0.9	0.7

Notes: For notes and source, see end of Table 1

(Continued on next page)

Table 1 (Cont.)

Labor Force, Employment, Unemployment and Unemployment Rates^{(a)(b)}

(in Thousands)

	Monthly/Yearly Change				
	August 2020(c)	July 2020(d)	August 2019(d)	July '20 - August '20	August '19 - August '20
<u>TUCSON MSA (Pima County)</u>					
Civilian Labor Force ^(c)	477.9	500.7	496.4	-22.8	-18.5
Unemployment	28.3	53.2	23.1	-24.9	5.2
Unemployment Rate (Unadjusted)	5.9%	10.6%	4.6%	-4.7	1.3
Total Employment	449.6	447.5	473.3	2.1	-23.6
<u>YUMA MSA (Yuma County)</u>					
Civilian Labor Force ^(e)	90.8	97.8	101.4	-7.0	-10.6
Unemployment	14.9	24.6	21.7	-9.7	-6.9
Unemployment Rate (Unadjusted)	16.4%	25.1%	21.4%	-8.7	-5.0
Total Employment	75.9	73.2	79.7	2.7	-3.7

Notes: a) Labor force, unemployment, total employment, and unadjusted unemployment rates are produced by the Local Area Unemployment Statistics (LAUS) program in the Arizona Office of Employment and Population Statistics, in cooperation with the U.S. Dept. of Labor, Bureau of Labor Statistics (BLS). BLS data used as part of the input in producing LAUS data come from the monthly Household Survey, produced by the Census Bureau for the U.S. Department of Labor, Bureau of Labor Statistics.

For more information on the LAUS program, visit this website: <http://www.bls.gov/lau/laufaq.htm>

c) Preliminary

d) Revised

e) Adjusted to Current Population Survey (CPS 2017) to reflect place of residence

f) Normal seasonal variations have been eliminated to reflect underlying trends

MSA - Metropolitan Statistical Area

NA - Not Available

Source: Prepared by the Arizona Office of Economic Opportunity, in cooperation with the U.S. Dept. of Labor, Bureau of Labor Statistics

Table 2

Nonfarm Payroll Employment

(in Thousands, Not Seasonally Adjusted)

ARIZONA ^(a)				Amount Change		Percent Change	
	August 2020(b)	July 2020(c)	August 2019(c)	Monthly	Over-Year	Monthly	Over-Year
				July '20 - August '20	August '19 - August '20	July '20 - August '20	August '19 - August '20
Total Nonfarm Payroll Employment^(c,d)	2,836.2	2,757.0	2,936.4	79.2	-100.2	2.9%	-3.4%
Private Sector	2,419.6	2,389.2	2,514.3	30.4	-94.7	1.3%	-3.8%
Government	416.6	367.8	422.1	48.8	-5.5	13.3%	-1.3%
Goods-Producing Industries	354.5	352.6	365.8	1.9	-11.3	0.5%	-3.1%
Manufacturing	171.6	171.1	179.0	0.5	-7.4	0.3%	-4.1%
Durable Goods	130.0	129.4	135.3	0.6	-5.3	0.5%	-3.9%
Fabricated Metal	19.3	19.3	20.9	0.0	-1.6	0.0%	-7.7%
Computer and Electronic Parts	34.9	34.8	33.4	0.1	1.5	0.3%	4.5%
Aerospace Products and Parts	31.4	31.6	31.2	-0.2	0.2	-0.6%	0.6%
Nondurable Goods	41.6	41.7	43.7	-0.1	-2.1	-0.2%	-4.8%
Natural Resources and Mining	13.6	13.5	13.7	0.1	-0.1	0.7%	-0.7%
Metal Ore Mining	11.7	11.7	11.5	0.0	0.2	0.0%	1.7%
Construction	169.3	168.0	173.1	1.3	-3.8	0.8%	-2.2%
Buildings	35.3	34.4	35.7	0.9	-0.4	2.6%	-1.1%
Heavy	20.1	20.5	20.5	-0.4	-0.4	-2.0%	-2.0%
Specialty Trades	113.9	113.1	116.9	0.8	-3.0	0.7%	-2.6%
Service-Providing Industries	2,481.7	2,404.4	2,570.6	77.3	-88.9	3.2%	-3.5%
Private Service Providing	2,065.1	2,036.6	2,148.5	28.5	-83.4	1.4%	-3.9%
Trade, Transportation and Utilities	549.0	541.4	537.4	7.6	11.6	1.4%	2.2%
Trade	428.4	423.1	419.9	5.3	8.5	1.3%	2.0%
Wholesale Trade	104.1	103.8	98.1	0.3	6.0	0.3%	6.1%
Retail Trade	324.3	319.3	321.8	5.0	2.5	1.6%	0.8%
Motor Vehicles and Parts	46.6	46.1	48.8	0.5	-2.2	1.1%	-4.5%
Furniture and Home Furnishings	6.8	6.8	9.8	0.0	-3.0	0.0%	-30.6%
Building Material, Garden Suppl	28.7	28.3	26.1	0.4	2.6	1.4%	10.0%
Food and Beverage	61.7	61.5	58.9	0.2	2.8	0.3%	4.8%
Clothing and Accessories	15.4	15.1	20.0	0.3	-4.6	2.0%	-23.0%
General Merchandise	68.2	66.0	62.6	2.2	5.6	3.3%	8.9%
Department Stores	22.4	22.0	22.6	0.4	-0.2	1.8%	-0.9%
Other General merchand	45.8	44.0	40.0	1.8	5.8	4.1%	14.5%
Transp., Warehousing, and Utilities	120.6	118.3	117.5	2.3	3.1	1.9%	2.6%
Utilities	12.7	12.6	12.3	0.1	0.4	0.8%	3.3%
Transportation and Warehousing	107.9	105.7	105.2	2.2	2.7	2.1%	2.6%
Truck Transportation	23.7	23.7	23.5	0.0	0.2	0.0%	0.9%
Information	45.3	44.9	49.4	0.4	-4.1	0.9%	-8.3%
Telecommunications	15.1	14.7	15.4	0.4	-0.3	2.7%	-1.9%
Financial Activities	231.2	229.2	231.5	2.0	-0.3	0.9%	-0.1%
Finance and Insurance	176.2	176.1	176.4	0.1	-0.2	0.1%	-0.1%
Credit Intermediation., Monetary Auth.	92.3	92.2	90.1	0.1	2.2	0.1%	2.4%
Financial Investments and Vehicles	20.9	20.7	20.5	0.2	0.4	1.0%	2.0%
Insurance Carriers	63.0	63.2	65.8	-0.2	-2.8	-0.3%	-4.3%
Real Estate and Rental and Leasing	55.0	53.1	55.1	1.9	-0.1	3.6%	-0.2%
Professional and Business Services	417.7	414.5	445.7	3.2	-28.0	0.8%	-6.3%
Professional, Scientific and Technical Service	158.2	159.5	159.9	-1.3	-1.7	-0.8%	-1.1%
Management of Companies and Enterprises	29.8	29.8	30.3	0.0	-0.5	0.0%	-1.7%
Administrative and Waste Services	229.7	225.2	255.5	4.5	-25.8	2.0%	-10.1%
Employment Services	95.5	93.2	108.5	2.3	-13.0	2.5%	-12.0%
Business Support Services	34.4	34.4	39.3	0.0	-4.9	0.0%	-12.5%
Services to Buildings and Dwellings	42.4	40.9	46.3	1.5	-3.9	3.7%	-8.4%
Education and Health Services	461.3	449.9	462.7	11.4	-1.4	2.5%	-0.3%
Educational Services	71.6	64.7	67.2	6.9	4.4	10.7%	6.5%
Health Care and Social Assistance	389.7	385.2	395.5	4.5	-5.8	1.2%	-1.5%
Health Care	328.9	326.6	331.8	2.3	-2.9	0.7%	-0.9%
Ambulatory Health Care Services	173.0	171.9	173.1	1.1	-0.1	0.6%	-0.1%
Hospitals	99.2	99.1	99.7	0.1	-0.5	0.1%	-0.5%
Nursing and Residential Care Facilities	56.7	55.6	59.0	1.1	-2.3	2.0%	-3.9%
Social Assistance	60.8	58.6	63.7	2.2	-2.9	3.8%	-4.6%
Leisure and Hospitality	263.8	261.1	327.3	2.7	-63.5	1.0%	-19.4%
Arts, Entertainment and Recreation	28.5	29.3	46.1	-0.8	-17.6	-2.7%	-38.2%
Accommodation and Food Services	235.3	231.8	281.2	3.5	-45.9	1.5%	-16.3%
Accommodation	28.3	28.2	44.4	0.1	-16.1	0.4%	-36.3%
Food Services and Drinking Places	207.0	203.6	236.8	3.4	-29.8	1.7%	-12.6%
Other Services (except Public Administration)	96.8	95.6	94.5	1.2	2.3	1.3%	2.4%
Government	416.6	367.8	422.1	48.8	-5.5	13.3%	-1.3%
Federal Government	62.5	58.2	57.2	4.3	5.3	7.4%	9.3%
State Government	92.7	80.9	89.5	11.8	3.2	14.6%	3.6%
State Government Education	54.6	43.2	53.1	11.4	1.5	26.4%	2.8%
Other State Government	38.1	37.7	36.4	0.4	1.7	1.1%	4.7%
Local Government	261.4	228.7	275.4	32.7	-14.0	14.3%	-5.1%
Local Government Education	130.9	97.7	140.1	33.2	-9.2	34.0%	-6.6%
Other Local Government	130.5	131.0	135.3	-0.5	-4.8	-0.4%	-3.5%

Note: For notes and source, see end of Table 2

Table 2 (Cont.)

Nonfarm Payroll Employment

(in Thousands, Not Seasonally Adjusted)

PHOENIX-MESA-SCOTTSDALE MSA ¹	August 2020(b)	July 2020(c)	August 2019(c)	Amount Change		Percent Change	
				Monthly	Over-Year	Monthly	Over-Year
				July '20 - August '20	August '19 - August '20	July '20 - August '20	August '19 - August '20
Total Nonfarm Payroll Employment^(c,d)	2,102.0	2,050.7	2,179.3	51.3	-77.3	2.5%	-3.5%
Private Sector	1,863.7	1,839.3	1,935.4	24.4	-71.7	1.3%	-3.7%
Government	238.3	211.4	243.9	26.9	-5.6	12.7%	-2.3%
Goods-Producing Industries	266.1	265.5	274.5	0.6	-8.4	0.2%	-3.1%
Manufacturing	130.4	129.9	134.6	0.5	-4.2	0.4%	-3.1%
Durable Goods	96.0	95.3	99.0	0.7	-3.0	0.7%	-3.0%
Computer and Electronic Parts	31.0	30.9	29.4	0.1	1.6	0.3%	5.4%
Aerospace Products and Parts	16.7	16.8	17.0	-0.1	-0.3	-0.6%	-1.8%
Nondurable Goods	34.4	34.6	35.6	-0.2	-1.2	-0.6%	-3.4%
Natural Resources and Mining	3.5	3.6	3.6	-0.1	-0.1	-2.8%	-2.8%
Construction	132.2	132.0	136.3	0.2	-4.1	0.2%	-3.0%
Buildings	28.7	28.3	28.2	0.4	0.5	1.4%	1.8%
Heavy	15.7	16.0	16.4	-0.3	-0.7	-1.9%	-4.3%
Specialty Trades	87.8	87.7	91.7	0.1	-3.9	0.1%	-4.3%
Service-Providing Industries	1,835.9	1,785.2	1,904.8	50.7	-68.9	2.8%	-3.6%
Private Service Providing	1,597.6	1,573.8	1,660.9	23.8	-63.3	1.5%	-3.8%
Trade, Transportation and Utilities	413.1	408.3	405.5	4.8	7.6	1.2%	1.9%
Trade	319.0	315.7	314.2	3.3	4.8	1.0%	1.5%
Wholesale Trade	88.1	87.9	82.7	0.2	5.4	0.2%	6.5%
Retail Trade	230.9	227.8	231.5	3.1	-0.6	1.4%	-0.3%
Motor Vehicles and Parts	34.0	33.6	35.7	0.4	-1.7	1.2%	-4.8%
Building Material, Garden Supply	20.0	19.9	18.0	0.1	2.0	0.5%	11.1%
Food and Beverage	42.5	42.4	40.9	0.1	1.6	0.2%	3.9%
General Merchandise	45.3	44.1	41.8	1.2	3.5	2.7%	8.4%
Department Stores	15.2	15.1	16.1	0.1	-0.9	0.7%	-5.6%
Other General merchandise	30.1	29.0	25.7	1.1	4.4	3.8%	17.1%
Transportation, Warehousing and Utilities	94.1	92.6	91.3	1.5	2.8	1.6%	3.1%
Utilities	8.5	8.5	8.3	0.0	0.2	0.0%	2.4%
Transportation and warehousing	85.6	84.1	83.0	1.5	2.6	1.8%	3.1%
Truck transportation	19.3	19.3	18.1	0.0	1.2	0.0%	6.6%
Information	38.5	38.0	40.8	0.5	-2.3	1.3%	-5.6%
Telecommunications	12.6	12.4	12.9	0.2	-0.3	1.6%	-2.3%
Financial Activities	204.4	202.6	204.3	1.8	0.1	0.9%	0.0%
Finance and Insurance	159.9	159.8	159.6	0.1	0.3	0.1%	0.2%
Credit Intermediation., Monetary Auth.	85.6	85.7	83.1	-0.1	2.5	-0.1%	3.0%
Financial Investments and Vehicles	18.2	18.1	18.3	0.1	-0.1	0.6%	-0.5%
Insurance Carriers	56.1	56.0	58.2	0.1	-2.1	0.2%	-3.6%
Real Estate and Rental and Leasing	44.5	42.8	44.7	1.7	-0.2	4.0%	-0.4%
Professional and Business Services	345.5	343.4	371.2	2.1	-25.7	0.6%	-6.9%
Professional, Scientific and Technical Services	128.8	130.1	130.6	-1.3	-1.8	-1.0%	-1.4%
Management of Companies and Enterprises	27.8	27.7	28.2	0.1	-0.4	0.4%	-1.4%
Administrative and Waste Services	188.9	185.6	212.4	3.3	-23.5	1.8%	-11.1%
Employment Services	83.4	81.7	95.8	1.7	-12.4	2.1%	-12.9%
Business Support Services	24.5	24.4	27.5	0.1	-3.0	0.4%	-10.9%
Services to Buildings and Dwellings	32.8	31.7	36.5	1.1	-3.7	3.5%	-10.1%
Education and Health Services	342.6	332.5	339.3	10.1	3.3	3.0%	1.0%
Educational Services	61.4	55.7	55.5	5.7	5.9	10.2%	10.6%
Health Care and Social Assistance	281.2	276.8	283.8	4.4	-2.6	1.6%	-0.9%
Health Care	236.0	233.4	237.0	2.6	-1.0	1.1%	-0.4%
Ambulatory Health Care Services	131.0	129.4	131.2	1.6	-0.2	1.2%	-0.2%
Hospitals	65.2	65.1	65.1	0.1	0.1	0.2%	0.2%
Nursing and Residential Care Facilities	39.8	38.9	40.7	0.9	-0.9	2.3%	-2.2%
Social Assistance	45.2	43.4	46.8	1.8	-1.6	4.1%	-3.4%
Leisure and Hospitality	181.1	177.6	229.2	3.5	-48.1	2.0%	-21.0%
Arts, Entertainment and Recreation	20.8	21.8	36.1	-1.0	-15.3	-4.6%	-42.4%
Accommodation and Food Services	160.3	155.8	193.1	4.5	-32.8	2.9%	-17.0%
Accommodation	14.5	14.4	24.8	0.1	-10.3	0.7%	-41.5%
Food Services and Drinking Places	145.8	141.4	168.3	4.4	-22.5	3.1%	-13.4%
Other Services (except Public Administration)	72.4	71.4	70.6	1.0	1.8	1.4%	2.5%
Government	238.3	211.4	243.9	26.9	-5.6	12.7%	-2.3%
Federal Government	26.7	24.3	23.5	2.4	3.2	9.9%	13.6%
State Government	53.4	48.4	49.7	5.0	3.7	10.3%	7.4%
State Government Education	26.6	21.6	24.0	5.0	2.6	23.1%	10.8%
Local Government	158.2	138.7	170.7	19.5	-12.5	14.1%	-7.3%
Local Government Education	82.8	61.1	91.7	21.7	-8.9	35.5%	-9.7%

Note: 1) Phoenix-Mesa-Scottsdale Metropolitan Area includes Maricopa and Pinal counties. For other notes and source, see end of Table 2

Table 2 (Cont.)

Nonfarm Payroll Employment

(in Thousands, Not Seasonally Adjusted)

TUCSON MSA ³				Amount Change		Percent Change	
	August 2020(b)	July 2020(c)	August 2019(c)	Monthly	Over-Year	Monthly	Over-Year
				July '20 - August '20	August '19 - August '20	July '20 - August '20	August '19 - August '20
Total Nonfarm Payroll Employment^(c,d)	373.2	364.3	386.2	8.9	-13.0	2.4%	-3.4%
Private Sector	295.9	295.0	308.6	0.9	-12.7	0.3%	-4.1%
Government	77.3	69.3	77.6	8.0	-0.3	11.5%	-0.4%
Goods-Producing Industries	46.9	46.8	48.1	0.1	-1.2	0.2%	-2.5%
Manufacturing	26.8	26.8	28.2	0.0	-1.4	0.0%	-5.0%
Aerospace Products and Parts	14.5	14.6	14.0	-0.1	0.5	-0.7%	3.6%
Natural Resources and Mining	1.8	1.8	2.0	0.0	-0.2	0.0%	-10.0%
Construction	18.3	18.2	17.9	0.1	0.4	0.5%	2.2%
Specialty Trades	14.5	14.4	13.7	0.1	0.8	0.7%	5.8%
Service-Providing Industries	326.3	317.5	338.1	8.8	-11.8	2.8%	-3.5%
Private Service Providing	249.0	248.2	260.5	0.8	-11.5	0.3%	-4.4%
Trade, Transportation and Utilities	65.1	63.8	62.6	1.3	2.5	2.0%	4.0%
Trade	50.6	49.7	48.6	0.9	2.0	1.8%	4.1%
Wholesale Trade	7.1	7.1	7.2	0.0	-0.1	0.0%	-1.4%
Retail Trade	43.5	42.6	41.4	0.9	2.1	2.1%	5.1%
General Merchandise	9.8	9.4	8.6	0.4	1.2	4.3%	14.0%
Department Stores	3.6	3.4	3.5	0.2	0.1	5.9%	2.9%
Other General Merchandise	6.2	6.0	5.1	0.2	1.1	3.3%	21.6%
Food and Beverage Stores	9.2	9.2	8.8	0.0	0.4	0.0%	4.5%
Transportation, Warehousing and Utilities	14.5	14.1	14.0	0.4	0.5	2.8%	3.6%
Information	4.1	4.0	5.7	0.1	-1.6	2.5%	-28.1%
Financial Activities	16.1	16.3	17.1	-0.2	-1.0	-1.2%	-5.8%
Professional and Business Services	47.0	46.5	49.9	0.5	-2.9	1.1%	-5.8%
Professional, Scientific and Technical Services	18.4	18.4	18.3	0.0	0.1	0.0%	0.5%
Administrative and Waste Services	27.4	27.0	30.2	0.4	-2.8	1.5%	-9.3%
Employment Services	9.7	9.3	10.9	0.4	-1.2	4.3%	-11.0%
Business Support Services	8.0	8.0	9.2	0.0	-1.2	0.0%	-13.0%
Education and Health Services	65.1	65.8	68.2	-0.7	-3.1	-1.1%	-4.5%
Health Care	50.2	50.2	50.7	0.0	-0.5	0.0%	-1.0%
Ambulatory Health Care Services	22.9	23.0	23.0	-0.1	-0.1	-0.4%	-0.4%
Hospitals	16.9	16.9	17.1	0.0	-0.2	0.0%	-1.2%
Nursing and Residential Care Facilities	10.4	10.3	10.6	0.1	-0.2	1.0%	-1.9%
Leisure and Hospitality	38.2	38.4	43.4	-0.2	-5.2	-0.5%	-12.0%
Accommodations and Food Services	34.1	34.4	38.6	-0.3	-4.5	-0.9%	-11.7%
Accommodations	5.0	4.9	6.9	0.1	-1.9	2.0%	-27.5%
Food Services and Drinking Places	29.1	29.5	31.7	-0.4	-2.6	-1.4%	-8.2%
Other Services (except Public Administration)	13.4	13.4	13.6	0.0	-0.2	0.0%	-1.5%
Government	77.3	69.3	77.6	8.0	-0.3	11.5%	-0.4%
Federal Government	13.5	13.0	12.9	0.5	0.6	3.8%	4.7%
State Government	24.2	19.7	24.9	4.5	-0.7	22.8%	-2.8%
State Government Education	19.3	14.7	20.3	4.6	-1.0	31.3%	-4.9%
Local Government	39.6	36.6	39.8	3.0	-0.2	8.2%	-0.5%
Local Government Education	21.7	17.8	20.9	3.9	0.8	21.9%	3.8%

Note: 3) Tucson Metropolitan Area includes all of Pima County. For other notes and source, see end of Table 2.

Table 2 (Cont.)

Nonfarm Payroll Employment

(in Thousands, Not Seasonally Adjusted)

YUMA MSA ⁴	August 2020(b)	July 2020(c)	August 2019(c)	Amount Change		Percent Change	
				Monthly	Over-Year	Monthly	Over-Year
				July '20 - August '20	August '19 - August '20	July '20 - August '20	August '19 - August '20
Total Nonfarm Payroll Employment^(c,d)	54.1	52.0	55.4	2.1	-1.3	4.0%	-2.3%
Private Sector	39.8	39.0	40.9	0.8	-1.1	2.1%	-2.7%
Government	14.3	13.0	14.5	1.3	-0.2	10.0%	-1.4%
Goods-Producing Industries	4.9	4.9	5.5	0.0	-0.6	0.0%	-10.9%
Manufacturing	2.6	2.6	2.4	0.0	0.2	0.0%	8.3%
Natural Resources and Construction	2.3	2.3	3.1	0.0	-0.8	0.0%	-25.8%
Service-Providing Industries	49.2	47.1	49.9	2.1	-0.7	4.5%	-1.4%
Private Service Providing	34.9	34.1	35.4	0.8	-0.5	2.3%	-1.4%
Trade, Transportation and Utilities	11.8	11.7	11.3	0.1	0.5	0.9%	4.4%
Information	0.4	0.4	0.4	0.0	0.0	0.0%	0.0%
Financial Activities	2.1	2.0	2.0	0.1	0.1	5.0%	5.0%
Professional and Business Services	5.7	5.6	5.8	0.1	-0.1	1.8%	-1.7%
Education and Health Services	7.9	7.4	8.2	0.5	-0.3	6.8%	-3.7%
Leisure and Hospitality	5.2	5.3	6.0	-0.1	-0.8	-1.9%	-13.3%
Other Services (except Public Administration)	1.8	1.7	1.7	0.1	0.1	5.9%	5.9%
Government	14.3	13.0	14.5	1.3	-0.2	10.0%	-1.4%
Federal Government	3.9	3.7	3.6	0.2	0.3	5.4%	8.3%
State and Local Government	10.4	9.3	10.9	1.1	-0.5	11.8%	-4.6%

Note: 4) Yuma Metropolitan Area includes all of Yuma County. For other notes and source, see end of Table 2

FLAGSTAFF MSA ⁵	August 2020(b)	July 2020(c)	August 2019(c)	Amount Change		Percent Change	
				Monthly	Over-Year	Monthly	Over-Year
				July '20 - August '20	August '19 - August '20	July '20 - August '20	August '19 - August '20
Total Nonfarm Payroll Employment^(c,d)	57.7	55.7	68.3	2.0	-10.6	3.6%	-15.5%
Private Sector	39.3	38.6	49.0	0.7	-9.7	1.8%	-19.8%
Government	18.4	17.1	19.3	1.3	-0.9	7.6%	-4.7%
Goods-Producing Industries	6.0	5.9	6.5	0.1	-0.5	1.7%	-7.7%
Manufacturing	3.7	3.7	3.8	0.0	-0.1	0.0%	-2.6%
Natural Resources and Construction	2.3	2.2	2.7	0.1	-0.4	4.5%	-14.8%
Service-Providing Industries	51.7	49.8	61.8	1.9	-10.1	3.8%	-16.3%
Private Service Providing	33.3	32.7	42.5	0.6	-9.2	1.8%	-21.6%
Trade, Transportation and Utilities	9.5	9.1	9.3	0.4	0.2	4.4%	2.2%
Information	0.4	0.4	0.4	0.0	0.0	0.0%	0.0%
Financial Activities	1.5	1.5	1.5	0.0	0.0	0.0%	0.0%
Professional and Business Services	3.6	3.6	3.6	0.0	0.0	0.0%	0.0%
Education and Health Services	8.8	8.7	9.4	0.1	-0.6	1.1%	-6.4%
Leisure and Hospitality	8.1	8.0	16.5	0.1	-8.4	1.3%	-50.9%
Other Services (except Public Administration)	1.4	1.4	1.8	0.0	-0.4	0.0%	-22.2%
Government	18.4	17.1	19.3	1.3	-0.9	7.6%	-4.7%
Federal Government	2.7	2.6	2.9	0.1	-0.2	3.8%	-6.9%
State and Local Government	15.7	14.5	16.4	1.2	-0.7	8.3%	-4.3%

Notes: 5) Flagstaff Metropolitan Area includes all of Coconino County. For other notes and source, see end of Table 2

Table 2 (Cont.)

Nonfarm Payroll Employment

(in Thousands, Not Seasonally Adjusted)

PRESCOTT MSA ⁶	August 2020(b)	July 2020(c)	August 2019(c)	Amount Change		Percent Change	
				Monthly	Over-Year	Monthly	Over-Year
				July '20 - August '20	August '19 - August '20	July '20 - August '20	August '19 - August '20
Total Nonfarm Payroll Employment^(c,d)	65.6	64.0	66.1	1.6	-0.5	2.5%	-0.8%
Private Sector	54.6	54.0	55.1	0.6	-0.5	1.1%	-0.9%
Government	11.0	10.0	11.0	1.0	0.0	10.0%	0.0%
Goods-Producing Industries	10.4	10.3	10.2	0.1	0.2	1.0%	2.0%
Manufacturing	3.7	3.8	3.8	-0.1	-0.1	-2.6%	-2.6%
Natural Resources and Construction	6.7	6.5	6.4	0.2	0.3	3.1%	4.7%
Service-Providing Industries	55.2	53.7	55.9	1.5	-0.7	2.8%	-1.3%
Private Service Providing	44.2	43.7	44.9	0.5	-0.7	1.1%	-1.6%
Trade, Transportation and Utilities	12.6	12.5	12.5	0.1	0.1	0.8%	0.8%
Information	0.5	0.5	0.5	0.0	0.0	0.0%	0.0%
Financial Activities	2.1	2.1	2.1	0.0	0.0	0.0%	0.0%
Professional and Business Services	4.4	4.3	4.3	0.1	0.1	2.3%	2.3%
Education and Health Services	12.5	12.0	12.5	0.5	0.0	4.2%	0.0%
Leisure and Hospitality	9.9	10.2	10.5	-0.3	-0.6	-2.9%	-5.7%
Other Services (except Public Administration)	2.2	2.1	2.5	0.1	-0.3	4.8%	-12.0%
Government	11.0	10.0	11.0	1.0	0.0	10.0%	0.0%
Federal Government	1.9	1.6	1.6	0.3	0.3	18.8%	18.8%
State and Local Government	9.1	8.4	9.4	0.7	-0.3	8.3%	-3.2%

Note: 6) Prescott Metropolitan Area includes all of Yavapai County. For other notes and source, see end of Table 2

LAKE HAVASU CITY-KINGMAN MSA⁷

LAKE HAVASU CITY-KINGMAN MSA ⁷	August 2020(b)	July 2020(c)	August 2019(c)	Amount Change		Percent Change	
				Monthly	Over-Year	Monthly	Over-Year
				July '20 - August '20	August '19 - August '20	July '20 - August '20	August '19 - August '20
Total Nonfarm Payroll Employment^(c,d)	50.1	48.9	52.4	1.2	-2.3	2.5%	-4.4%
Private Sector	42.0	41.4	44.2	0.6	-2.2	1.4%	-5.0%
Government	8.1	7.5	8.2	0.6	-0.1	8.0%	-1.2%
Goods-Producing Industries	6.6	6.5	6.7	0.1	-0.1	1.5%	-1.5%
Manufacturing	3.0	3.0	3.2	0.0	-0.2	0.0%	-6.3%
Natural Resources and Construction	3.6	3.5	3.5	0.1	0.1	2.9%	2.9%
Service-Providing Industries	43.5	42.4	45.7	1.1	-2.2	2.6%	-4.8%
Private Service Providing	35.4	34.9	37.5	0.5	-2.1	1.4%	-5.6%
Trade, Transportation and Utilities	13.3	13.2	12.6	0.1	0.7	0.8%	5.6%
Information	0.4	0.5	0.5	-0.1	-0.1	-20.0%	-20.0%
Financial Activities	1.8	1.8	1.8	0.0	0.0	0.0%	0.0%
Professional and Business Services	4.6	4.3	3.9	0.3	0.7	7.0%	17.9%
Education and Health Services	8.7	8.5	9.1	0.2	-0.4	2.4%	-4.4%
Leisure and Hospitality	4.9	4.9	7.7	0.0	-2.8	0.0%	-36.4%
Other Services (except Public Administration)	1.7	1.7	1.9	0.0	-0.2	0.0%	-10.5%
Government	8.1	7.5	8.2	0.6	-0.1	8.0%	-1.2%
Federal Government	0.8	0.5	0.5	0.3	0.3	60.0%	60.0%
State and Local Government	7.3	7.0	7.7	0.3	-0.4	4.3%	-5.2%

Note: 7) Lake Havasu City-Kingman Metropolitan Area includes all of Mohave County
For other notes and source, see next page

Table 2 (Cont.)

Nonfarm Payroll Employment

(in Thousands, Not Seasonally Adjusted)

SIERRA VISTA-DOUGLAS MSA⁸

				Amount Change		Percent Change	
	August	July	August	Monthly	Over-Year	Monthly	Over-Year
	2020(b)	2020(c)	2019(c)	July '20 - August '20	August '19 - August '20	July '20 - August '20	August '19 - August '20
Total Nonfarm Payroll Employment^(c,d)	34.7	33.9	33.3	0.8	1.4	2.4%	4.2%
Private Sector	23.7	23.6	22.7	0.1	1.0	0.4%	4.4%
Government	11.0	10.3	10.6	0.7	0.4	6.8%	3.8%
Goods-Producing Industries	2.6	2.6	2.4	0.0	0.2	0.0%	8.3%
Manufacturing	0.6	0.6	0.6	0.0	0.0	0.0%	0.0%
Natural Resources and Construction	2.0	2.0	1.8	0.0	0.2	0.0%	11.1%
Service-Providing Industries	32.1	31.3	30.9	0.8	1.2	2.6%	3.9%
Private Service Providing	21.1	21.0	20.3	0.1	0.8	0.5%	3.9%
Trade, Transportation and Utilities	6.6	6.6	5.8	0.0	0.8	0.0%	13.8%
Information	0.3	0.3	0.4	0.0	-0.1	0.0%	-25.0%
Financial Activities	0.8	0.8	0.8	0.0	0.0	0.0%	0.0%
Professional and Business Services	5.2	5.2	4.4	0.0	0.8	0.0%	18.2%
Education and Health Services	4.2	4.2	4.6	0.0	-0.4	0.0%	-8.7%
Leisure and Hospitality	3.4	3.3	3.6	0.1	-0.2	3.0%	-5.6%
Other Services (except Public Administration)	0.6	0.6	0.7	0.0	-0.1	0.0%	-14.3%
Government	11.0	10.3	10.6	0.7	0.4	6.8%	3.8%
Federal Government	5.0	4.9	4.8	0.1	0.2	2.0%	4.2%
State and Local Government	6.0	5.4	5.8	0.6	0.2	11.1%	3.4%

Note: 8) Sierra Vista Douglas Metropolitan Area includes all of Cochise County
For other notes and source, see next page)

Other notes and sources:

a) Nonfarm employment at the state and substate level is produced from the monthly establishment survey by the Current Employment Statistics (CES)
For more information on the establishment survey, see: <http://www.bls.gov/bls/empsitquickguide.htm>

b) Preliminary and subject to revision the following month

c) Revised

d) By place of work; does not include agricultural workers, self-employed, unpaid family members, and domestic workers

e) Detail may not add up exactly due to rounding

MSA — Metropolitan Statistical Area

NA — Not Available

Source: Prepared by the Arizona Office of Economic Opportunity, in cooperation with the U.S. Dept. of Labor, Bureau of Labor Statistics

Labor Force

Prepared in Cooperation with the U.S. Department of Labor, Bureau of Labor Statistics

Arizona Office of Economic Opportunity

2020

Apache County

	JAN	FEB	MAR	APR	MAY	JUN	JUL	AUG	SEP	OCT	NOV	DEC	AVG
Civilian Labor Force	20,785	20,710	21,128	20,086	19,607	19,679	19,506	19,287					
Employment	18,490	18,588	18,198	16,923	17,415	16,476	15,976	17,301					
Unemployment	2,295	2,122	2,930	3,163	2,192	3,203	3,530	1,986					
Unemployment rate	11.0	10.2	13.9	15.7	11.2	16.3	18.1	10.3					

Adjusted to the Current Population Survey (CPS 2020) to reflect place of residence

Equal Opportunity Employer/ Program available in alternative format/ reasonable accommodations: 602-771-1110, TDD 1-800-367-8939

Labor Force

Prepared in Cooperation with the U.S. Department of Labor, Bureau of Labor Statistics

Arizona Office of Economic Opportunity

2020

Cochise County(Sierra-Vista Douglas MSA)

	JAN	FEB	MAR	APR	MAY	JUN	JUL	AUG	SEP	OCT	NOV	DEC	AVG
Civilian Labor Force	51,901	52,169	52,093	50,443	51,250	50,825	51,701	50,363					
Employment	48,897	49,345	48,245	44,850	47,570	46,355	46,865	47,730					
Unemployment	3,004	2,824	3,848	5,593	3,680	4,470	4,836	2,633					
Unemployment rate	5.8	5.4	7.4	11.1	7.2	8.8	9.4	5.2					

Adjusted to the Current Population Survey (CPS 2020) to reflect place of residence

Equal Opportunity Employer/ Program available in alternative format/ reasonable accommodations: 602-771-1110, TDD 1-800-367-8939

Labor Force

Prepared in Cooperation with the U.S. Department of Labor, Bureau of Labor Statistics

Arizona Office of Economic Opportunity

2020

Coconino County(Flagstaff MSA)

	JAN	FEB	MAR	APR	MAY	JUN	JUL	AUG	SEP	OCT	NOV	DEC	AVG
Civilian Labor Force	77,687	77,685	77,165	71,690	70,186	70,331	70,061	66,818					
Employment	72,788	73,191	70,937	59,231	61,948	60,945	60,444	61,538					
Unemployment	4,899	4,494	6,228	12,459	8,238	9,386	9,617	5,280					
Unemployment rate	6.3	5.8	8.1	17.4	11.7	13.3	13.7	7.9					

Adjusted to the Current Population Survey (CPS 2020) to reflect place of residence

Equal Opportunity Employer/ Program available in alternative format/ reasonable accomodations: 602-771-1110, TDD 1-800-367-8939

Labor Force

Prepared in Cooperation with the U.S. Department of Labor, Bureau of Labor Statistics

Arizona Office of Economic Opportunity

2020

Gila County

	JAN	FEB	MAR	APR	MAY	JUN	JUL	AUG	SEP	OCT	NOV	DEC	AVG
Civilian Labor Force	21,565	21,577	21,547	21,205	20,990	20,675	20,609	20,130					
Employment	20,325	20,418	19,937	18,722	19,408	18,765	18,465	18,935					
Unemployment	1,240	1,159	1,610	2,483	1,582	1,910	2,144	1,195					
Unemployment rate	5.8	5.4	7.5	11.7	7.5	9.2	10.4	5.9					

Adjusted to the Current Population Survey (CPS 2020) to reflect place of residence

Equal Opportunity Employer/ Program available in alternative format/ reasonable accomodations: 602-771-1110, TDD 1-800-367-8939

Labor Force

Prepared in Cooperation with the U.S. Department of Labor, Bureau of Labor Statistics

Arizona Office of Economic Opportunity

2020

Graham County

	JAN	FEB	MAR	APR	MAY	JUN	JUL	AUG	SEP	OCT	NOV	DEC	AVG
Civilian Labor Force	15,417	15,909	15,865	15,390	15,510	14,916	14,490	14,533					
Employment	14,640	15,152	14,825	14,210	14,580	13,591	13,043	13,764					
Unemployment	777	757	1,040	1,180	930	1,325	1,447	769					
Unemployment rate	5.0	4.8	6.6	7.7	6.0	8.9	10.0	5.3					

Adjusted to the Current Population Survey (CPS 2020) to reflect place of residence

Equal Opportunity Employer/ Program available in alternative format/ reasonable accommodations: 602-771-1110, TDD 1-800-367-8939

Labor Force

Prepared in Cooperation with the U.S. Department of Labor, Bureau of Labor Statistics

Arizona Office of Economic Opportunity

2020

Greenlee County

	JAN	FEB	MAR	APR	MAY	JUN	JUL	AUG	SEP	OCT	NOV	DEC	AVG
Civilian Labor Force	4,585	4,628	4,578	4,560	4,578	4,625	4,666	4,472					
Employment	4,413	4,458	4,339	4,315	4,386	4,296	4,288	4,265					
Unemployment	172	170	239	245	192	329	378	207					
Unemployment rate	3.8	3.7	5.2	5.4	4.2	7.1	8.1	4.6					

Adjusted to the Current Population Survey (CPS 2020) to reflect place of residence

Equal Opportunity Employer/ Program available in alternative format/ reasonable accommodations: 602-771-1110, TDD 1-800-367-8939

Labor Force

Prepared in Cooperation with the U.S. Department of Labor, Bureau of Labor Statistics

Arizona Office of Economic Opportunity

2020

La Paz County

	JAN	FEB	MAR	APR	MAY	JUN	JUL	AUG	SEP	OCT	NOV	DEC	AVG
Civilian Labor Force	9,751	9,774	9,978	9,072	8,799	8,750	8,711	8,742					
Employment	9,168	9,224	9,215	8,288	8,269	8,051	7,924	8,237					
Unemployment	583	550	763	784	530	699	787	505					
Unemployment rate	6.0	5.6	7.6	8.6	6.0	8.0	9.0	5.8					

Adjusted to the Current Population Survey (CPS 2020) to reflect place of residence

Equal Opportunity Employer/ Program available in alternative format/ reasonable accommodations: 602-771-1110, TDD 1-800-367-8939

Labor Force

Prepared in Cooperation with the U.S. Department of Labor, Bureau of Labor Statistics

Arizona Office of Economic Opportunity

2020

Maricopa County

	JAN	FEB	MAR	APR	MAY	JUN	JUL	AUG	SEP	OCT	NOV	DEC	AVG
Civilian Labor Force	2,360,096	2,373,098	2,334,396	2,307,896	2,315,974	2,296,480	2,332,989	2,235,377					
Employment	2,266,177	2,283,286	2,209,663	2,019,432	2,123,837	2,072,534	2,090,853	2,104,249					
Unemployment	93,919	89,812	124,733	288,464	192,137	223,946	242,136	131,128					
Unemployment rate	4.0	3.8	5.3	12.5	8.3	9.8	10.4	5.9					

Adjusted to the Current Population Survey (CPS 2020) to reflect place of residence

Equal Opportunity Employer/ Program available in alternative format/ reasonable accommodations: 602-771-1110, TDD 1-800-367-8939

Labor Force

Prepared in Cooperation with the U.S. Department of Labor, Bureau of Labor Statistics

Arizona Office of Economic Opportunity

2020

Mohave County(Lake Havasu City-Kingman MSA)

	JAN	FEB	MAR	APR	MAY	JUN	JUL	AUG	SEP	OCT	NOV	DEC	AVG
Civilian Labor Force	89,027	89,571	88,261	86,810	88,464	86,439	87,932	83,371					
Employment	83,775	84,668	81,466	70,023	76,387	75,455	76,805	77,165					
Unemployment	5,252	4,903	6,795	16,787	12,077	10,984	11,127	6,206					
Unemployment rate	5.9	5.5	7.7	19.3	13.7	12.7	12.7	7.4					

Adjusted to the Current Population Survey (CPS 2020) to reflect place of residence

Equal Opportunity Employer/ Program available in alternative format/ reasonable accomodations: 602-771-1110, TDD 1-800-367-8939

Labor Force

Prepared in Cooperation with the U.S. Department of Labor, Bureau of Labor Statistics

Arizona Office of Economic Opportunity

2020

Navajo County

	JAN	FEB	MAR	APR	MAY	JUN	JUL	AUG	SEP	OCT	NOV	DEC	AVG
Civilian Labor Force	40,989	40,941	41,510	40,177	39,771	39,757	40,011	39,291					
Employment	37,667	37,833	37,205	34,421	35,931	34,625	34,486	36,147					
Unemployment	3,322	3,108	4,305	5,756	3,840	5,132	5,525	3,144					
Unemployment rate	8.1	7.6	10.4	14.3	9.7	12.9	13.8	8.0					

Adjusted to the Current Population Survey (CPS 2020) to reflect place of residence

Equal Opportunity Employer/ Program available in alternative format/ reasonable accomodations: 602-771-1110, TDD 1-800-367-8939

Labor Force

Prepared in Cooperation with the U.S. Department of Labor, Bureau of Labor Statistics

Arizona Office of Economic Opportunity

2020

Pima County(Tucson MSA)

	JAN	FEB	MAR	APR	MAY	JUN	JUL	AUG	SEP	OCT	NOV	DEC	AVG
Civilian Labor Force	504,206	507,744	500,658	497,905	502,124	496,222	500,705	477,907					
Employment	481,622	486,239	470,843	434,363	460,027	447,038	447,530	449,649					
Unemployment	22,584	21,505	29,815	63,542	42,097	49,184	53,175	28,258					
Unemployment rate	4.5	4.2	6.0	12.8	8.4	9.9	10.6	5.9					

Adjusted to the Current Population Survey (CPS 2020) to reflect place of residence

Equal Opportunity Employer/ Program available in alternative format/ reasonable accomodations: 602-771-1110, TDD 1-800-367-8939

Labor Force

Prepared in Cooperation with the U.S. Department of Labor, Bureau of Labor Statistics

Arizona Office of Economic Opportunity

2020

Pinal County

	JAN	FEB	MAR	APR	MAY	JUN	JUL	AUG	SEP	OCT	NOV	DEC	AVG
Civilian Labor Force	192,010	192,715	191,117	183,683	183,657	182,956	185,915	178,729					
Employment	182,584	183,746	178,628	161,617	168,733	164,821	166,103	168,122					
Unemployment	9,426	8,969	12,489	22,066	14,924	18,135	19,812	10,607					
Unemployment rate	4.9	4.7	6.5	12.0	8.1	9.9	10.7	5.9					

Adjusted to the Current Population Survey (CPS 2020) to reflect place of residence

Equal Opportunity Employer/ Program available in alternative format/ reasonable accomodations: 602-771-1110, TDD 1-800-367-8939

Labor Force

Prepared in Cooperation with the U.S. Department of Labor, Bureau of Labor Statistics

Arizona Office of Economic Opportunity

2020

Santa Cruz County

	JAN	FEB	MAR	APR	MAY	JUN	JUL	AUG	SEP	OCT	NOV	DEC	AVG
Civilian Labor Force	20,067	19,873	20,149	19,320	18,821	18,760	18,517	18,116					
Employment	18,466	18,442	18,038	16,248	16,788	16,215	15,509	16,234					
Unemployment	1,601	1,431	2,111	3,072	2,033	2,545	3,008	1,882					
Unemployment rate	8.0	7.2	10.5	15.9	10.8	13.6	16.2	10.4					

Adjusted to the Current Population Survey (CPS 2020) to reflect place of residence

Equal Opportunity Employer/ Program available in alternative format/ reasonable accommodations: 602-771-1110, TDD 1-800-367-8939

Labor Force

Prepared in Cooperation with the U.S. Department of Labor, Bureau of Labor Statistics

Arizona Office of Economic Opportunity

2020

Yavapai County(Prescott MSA)

	JAN	FEB	MAR	APR	MAY	JUN	JUL	AUG	SEP	OCT	NOV	DEC	AVG
Civilian Labor Force	107,379	108,048	106,535	109,749	109,444	108,470	109,601	105,414					
Employment	102,552	103,465	100,271	94,226	100,165	98,460	99,063	99,737					
Unemployment	4,827	4,583	6,264	15,523	9,279	10,010	10,538	5,677					
Unemployment rate	4.5	4.2	5.9	14.1	8.5	9.2	9.6	5.4					

Adjusted to the Current Population Survey (CPS 2020) to reflect place of residence

Equal Opportunity Employer/ Program available in alternative format/ reasonable accommodations: 602-771-1110, TDD 1-800-367-8939

Labor Force

Prepared in Cooperation with the U.S. Department of Labor, Bureau of Labor Statistics

Arizona Office of Economic Opportunity

2020

Yuma County(Yuma MSA)

	JAN	FEB	MAR	APR	MAY	JUN	JUL	AUG	SEP	OCT	NOV	DEC	AVG
Civilian Labor Force	100,806	98,881	103,472	96,910	92,032	92,547	97,783	90,783					
Employment	87,020	87,010	86,192	73,904	75,299	72,198	73,194	75,928					
Unemployment	13,786	11,871	17,280	23,006	16,733	20,349	24,589	14,855					
Unemployment rate	13.7	12.0	16.7	23.7	18.2	22.0	25.1	16.4					

Adjusted to the Current Population Survey (CPS 2020) to reflect place of residence

Equal Opportunity Employer/ Program available in alternative format/ reasonable accommodations: 602-771-1110, TDD 1-800-367-8939

Nonfarm Employment

Prepared in Cooperation with the U.S. Department of Labor, Bureau of Labor Statistics

Arizona Office of Economic Opportunity

2020

Apache County

	JAN	FEB	MAR	APR	MAY	JUN	JUL	AUG	SEP	OCT	NOV	DEC	AVG
Total Nonfarm	17,900	18,000	18,025	16,875	16,800	16,375	15,600	17,275					
Total Private	7,325	7,375	7,425	6,625	6,650	6,700	6,625	6,725					
Goods Producing	550	575	600	375	375	375	375	400					
Service-Providing	17,350	17,425	17,425	16,500	16,425	16,000	15,225	16,875					
Private Service-Providing	6,775	6,800	6,825	6,250	6,275	6,325	6,250	6,325					
Trade, Transportation, and Utilities	1,925	1,925	1,950	1,825	1,850	1,875	1,875	1,875					
Other Private Service-Providing	4,850	4,875	4,875	4,425	4,425	4,450	4,375	4,450					
Government	10,575	10,625	10,600	10,250	10,150	9,675	8,975	10,550					
Federal Government	2,525	2,550	2,575	2,525	2,575	2,625	2,475	2,625					
State and Local Government	8,050	8,075	8,025	7,725	7,575	7,050	6,500	7,925					

Benchmark year 2019, quarter 1, rev. 9/11/2020

Equal Opportunity Employer/ Program available in alternative format/ reasonable accomodations: 602-771-1110, TDD 1-800-367-8939

Nonfarm Employment

Prepared in Cooperation with the U.S. Department of Labor, Bureau of Labor Statistics

Arizona Office of Economic Opportunity

2020

Cochise County(Sierra-Vista Douglas MSA)

	JAN	FEB	MAR	APR	MAY	JUN	JUL	AUG	SEP	OCT	NOV	DEC	AVG
Total Nonfarm	34,400	34,900	34,900	32,400	33,800	33,700	33,900	34,700					
Total Private	23,100	23,400	23,500	21,200	22,600	23,200	23,600	23,700					
Goods Producing	2,500	2,500	2,500	2,200	2,500	2,500	2,600	2,600					
Mining and Construction	1,900	1,900	1,900	1,700	1,900	1,900	2,000	2,000					
Manufacturing	600	600	600	500	600	600	600	600					
Service-Providing	31,900	32,400	32,400	30,200	31,300	31,200	31,300	32,100					
Private Service-Providing	20,600	20,900	21,000	19,000	20,100	20,700	21,000	21,100					
Trade, Transportation, and Utilities	5,800	5,800	5,900	5,800	6,500	6,600	6,600	6,600					
Information	300	400	400	300	300	300	300	300					
Financial Activities	800	800	800	800	800	800	800	800					
Professional and Business Services	4,900	4,900	5,000	4,600	4,600	4,900	5,200	5,200					
Educational and Health Services	4,500	4,600	4,500	4,000	4,100	4,200	4,200	4,200					
Leisure and Hospitality	3,600	3,700	3,700	3,000	3,200	3,300	3,300	3,400					
Other Services	700	700	700	500	600	600	600	600					

Government	11,300	11,500	11,400	11,200	11,200	10,500	10,300	11,000
Federal Government	4,800	4,800	4,900	4,900	5,000	4,900	4,900	5,000
State and Local Government	6,500	6,700	6,500	6,300	6,200	5,600	5,400	6,000

Benchmark year 2019, quarter 1, rev. 9/11/2020

Equal Opportunity Employer/ Program available in alternative format/ reasonable accommodations: 602-771-1110, TDD 1-800-367-8939

Nonfarm Employment

Prepared in Cooperation with the U.S. Department of Labor, Bureau of Labor Statistics

Arizona Office of Economic Opportunity

2020

Coconino County(Flagstaff MSA)

	JAN	FEB	MAR	APR	MAY	JUN	JUL	AUG	SEP	OCT	NOV	DEC	AVG
Total Nonfarm	67,200	67,600	67,100	55,600	56,300	57,100	55,700	57,700					
Total Private	47,000	47,300	46,800	35,600	37,700	38,900	38,600	39,300					
Goods Producing	6,100	6,100	6,100	5,600	5,900	6,000	5,900	6,000					
Mining and Construction	2,300	2,300	2,300	2,100	2,300	2,300	2,200	2,300					
Manufacturing	3,800	3,800	3,800	3,500	3,600	3,700	3,700	3,700					
Service-Providing	61,100	61,500	61,000	50,000	50,400	51,100	49,800	51,700					
Private Service-Providing	40,900	41,200	40,700	30,000	31,800	32,900	32,700	33,300					
Trade, Transportation, and Utilities	9,400	9,400	9,300	8,700	8,500	9,000	9,100	9,500					
Information	400	400	400	400	400	400	400	400					
Financial Activities	1,500	1,500	1,500	1,500	1,500	1,500	1,500	1,500					
Professional and Business Services	3,300	3,400	3,500	3,300	3,500	3,600	3,600	3,600					
Educational and Health Services	9,600	9,700	9,600	8,800	8,800	8,800	8,700	8,800					
Leisure and Hospitality	14,900	15,000	14,600	5,900	7,800	8,200	8,000	8,100					
Other Services	1,800	1,800	1,800	1,400	1,300	1,400	1,400	1,400					
Government	20,200	20,300	20,300	20,000	18,600	18,200	17,100	18,400					
Federal Government	2,400	2,400	2,400	2,600	2,700	2,900	2,600	2,700					
State and Local Government	17,800	17,900	17,900	17,400	15,900	15,300	14,500	15,700					

Benchmark year 2019, quarter 1, rev. 9/11/2020

Equal Opportunity Employer/ Program available in alternative format/ reasonable accommodations: 602-771-1110, TDD 1-800-367-8939

Nonfarm Employment

Prepared in Cooperation with the U.S. Department of Labor, Bureau of Labor Statistics

Arizona Office of Economic Opportunity

2020

Gila County

	JAN	FEB	MAR	APR	MAY	JUN	JUL	AUG	SEP	OCT	NOV	DEC	AVG
Total Nonfarm	14,775	14,925	14,850	14,125	14,175	14,125	13,700	14,275					

Total Private	9,350	9,400	9,400	8,625	8,700	8,800	8,700	8,775
Goods Producing	2,875	2,875	2,875	2,800	2,800	2,825	2,825	2,825
Service-Providing	11,900	12,050	11,975	11,325	11,375	11,300	10,875	11,450
Private Service-Providing	6,475	6,525	6,525	5,825	5,900	5,975	5,875	5,950
Trade, Transportation, and Utilities	2,075	2,075	2,075	1,975	2,025	2,025	2,000	2,000
Other Private Service-Providing	4,400	4,450	4,450	3,850	3,875	3,950	3,875	3,950
Government	5,425	5,525	5,450	5,500	5,475	5,325	5,000	5,500
Federal Government	225	250	250	250	250	250	250	275
State and Local Government	5,200	5,275	5,200	5,250	5,225	5,075	4,750	5,225

Benchmark year 2019, quarter 1, rev. 9/11/2020

Equal Opportunity Employer/ Program available in alternative format/ reasonable accommodations: 602-771-1110, TDD 1-800-367-8939

Nonfarm Employment

Prepared in Cooperation with the U.S. Department of Labor, Bureau of Labor Statistics

Arizona Office of Economic Opportunity

2020

Graham County

	JAN	FEB	MAR	APR	MAY	JUN	JUL	AUG	SEP	OCT	NOV	DEC	AVG
Total Nonfarm	9,175	9,500	9,525	9,200	9,125	8,775	8,275	8,900					
Total Private	6,425	6,475	6,500	6,225	6,225	6,250	6,225	6,300					
Goods Producing	1,875	1,900	1,900	1,850	1,850	1,875	1,900	1,900					
Service-Providing	7,300	7,600	7,625	7,350	7,275	6,900	6,375	7,000					
Private Service-Providing	4,550	4,575	4,600	4,375	4,375	4,375	4,325	4,400					
Trade, Transportation, and Utilities	1,775	1,775	1,775	1,750	1,750	1,775	1,775	1,800					
Other Private Service-Providing	2,775	2,800	2,825	2,625	2,625	2,600	2,550	2,600					
Government	2,750	3,025	3,025	2,975	2,900	2,525	2,050	2,600					
Federal Government	375	375	375	375	375	375	375	400					
State and Local Government	2,375	2,650	2,650	2,600	2,525	2,150	1,675	2,200					

Benchmark year 2019, quarter 1, rev. 9/11/2020

Equal Opportunity Employer/ Program available in alternative format/ reasonable accommodations: 602-771-1110, TDD 1-800-367-8939

Nonfarm Employment

Prepared in Cooperation with the U.S. Department of Labor, Bureau of Labor Statistics

Arizona Office of Economic Opportunity

2020

Greenlee County

	JAN	FEB	MAR	APR	MAY	JUN	JUL	AUG	SEP	OCT	NOV	DEC	AVG
Total Nonfarm	5,225	5,250	5,250	5,250	5,150	5,250	5,150	5,200					
Total Private	4,650	4,675	4,675	4,675	4,575	4,675	4,700	4,650					

Goods Producing	3,725	3,750	3,750	3,725	3,625	3,725	3,725	3,675
Service-Providing	1,500	1,500	1,500	1,525	1,525	1,525	1,425	1,525
Private Service-Providing	925	925	925	950	950	950	975	975
Trade, Transportation, and Utilities	500	500	500	500	500	500	525	525
Other Private Service-Providing	425	425	425	450	450	450	450	450
Government	575	575	575	575	575	575	450	550
Federal Government	25	25	25	25	25	50	25	50
State and Local Government	550	550	550	550	550	525	425	500

Benchmark year 2019, quarter 1, rev. 9/11/2020

Equal Opportunity Employer/ Program available in alternative format/ reasonable accommodations: 602-771-1110, TDD 1-800-367-8939

Nonfarm Employment

Prepared in Cooperation with the U.S. Department of Labor, Bureau of Labor Statistics

Arizona Office of Economic Opportunity

2020

La Paz County

	JAN	FEB	MAR	APR	MAY	JUN	JUL	AUG	SEP	OCT	NOV	DEC	AVG
Total Nonfarm	5,800	5,900	5,875	5,700	5,725	5,650	5,525	5,625					
Total Private	3,475	3,575	3,575	3,400	3,425	3,375	3,400	3,375					
Goods Producing	200	225	225	225	225	200	200	175					
Service-Providing	5,600	5,675	5,650	5,475	5,500	5,450	5,325	5,450					
Private Service-Providing	3,275	3,350	3,350	3,175	3,200	3,175	3,200	3,200					
Trade, Transportation, and Utilities	1,675	1,700	1,700	1,650	1,650	1,650	1,650	1,675					
Other Private Service-Providing	1,600	1,650	1,650	1,525	1,550	1,525	1,550	1,525					
Government	2,325	2,325	2,300	2,300	2,300	2,275	2,125	2,250					
Federal Government	375	350	350	350	350	350	350	350					
State and Local Government	1,950	1,975	1,950	1,950	1,950	1,925	1,775	1,900					

Benchmark year 2019, quarter 1, rev. 9/11/2020

Equal Opportunity Employer/ Program available in alternative format/ reasonable accommodations: 602-771-1110, TDD 1-800-367-8939

Nonfarm Employment

Prepared in Cooperation with the U.S. Department of Labor, Bureau of Labor Statistics

Arizona Office of Economic Opportunity

2020

Maricopa County

	JAN	FEB	MAR	APR	MAY	JUN	JUL	AUG	SEP	OCT	NOV	DEC	AVG
Total Nonfarm	2,152,100	2,167,100	2,153,800	1,960,100	1,986,400	2,004,700	1,995,000	2,043,900					
Total Private	1,918,700	1,930,200	1,919,000	1,728,900	1,766,400	1,813,200	1,802,600	1,826,700					
Goods Producing	264,600	266,800	266,400	255,200	255,900	258,600	256,400	257,200					

Mining and Construction	135,300	137,600	136,800	134,500	134,000	133,700	132,200	132,500
Manufacturing	129,300	129,200	129,600	120,700	121,900	124,900	124,200	124,700
Service-Providing	1,887,500	1,900,300	1,887,400	1,704,900	1,730,500	1,746,100	1,738,600	1,786,700
Private Service-Providing	1,654,100	1,663,400	1,652,600	1,473,700	1,510,500	1,554,600	1,546,200	1,569,500
Trade, Transportation, and Utilities	405,900	405,100	407,000	382,300	390,100	398,000	398,600	403,300
Information	40,100	40,200	39,800	36,900	37,000	37,400	37,600	38,000
Financial Activities	203,000	203,200	200,900	200,200	200,100	202,000	201,300	203,100
Professional and Business Services	365,300	364,600	361,000	336,600	333,900	336,400	337,900	340,000
Educational and Health Services	342,200	346,200	345,200	315,900	319,000	325,000	326,900	336,700
Leisure and Hospitality	228,800	235,600	229,400	141,800	163,300	185,400	173,700	177,100
Other Services	68,800	68,500	69,300	60,000	67,100	70,400	70,200	71,300
Government	233,400	236,900	234,800	231,200	220,000	191,500	192,400	217,200
Federal Government	22,000	21,900	22,200	22,600	22,600	22,500	22,900	25,300
State and Local Government	211,400	215,000	212,600	208,600	197,400	169,000	169,500	191,900

Benchmark year 2019, quarter 1, rev. 9/11/2020

Equal Opportunity Employer/ Program available in alternative format/ reasonable accommodations: 602-771-1110, TDD 1-800-367-8939

Nonfarm Employment

Prepared in Cooperation with the U.S. Department of Labor, Bureau of Labor Statistics

Arizona Office of Economic Opportunity

2020

Mohave County(Lake Havasu City-Kingman MSA)

	JAN	FEB	MAR	APR	MAY	JUN	JUL	AUG	SEP	OCT	NOV	DEC	AVG
Total Nonfarm	52,600	53,400	52,700	45,700	48,300	48,700	48,900	50,100					
Total Private	44,300	44,700	44,500	37,500	40,300	41,100	41,400	42,000					
Goods Producing	6,400	6,500	6,500	6,100	6,300	6,500	6,500	6,600					
Mining and Construction	3,300	3,400	3,400	3,100	3,400	3,500	3,500	3,600					
Manufacturing	3,100	3,100	3,100	3,000	2,900	3,000	3,000	3,000					
Service-Providing	46,200	46,900	46,200	39,600	42,000	42,200	42,400	43,500					
Private Service-Providing	37,900	38,200	38,000	31,400	34,000	34,600	34,900	35,400					
Trade, Transportation, and Utilities	12,800	12,800	12,800	12,100	13,300	13,100	13,200	13,300					
Information	500	500	500	500	500	500	500	400					
Financial Activities	1,800	1,800	1,800	1,800	1,800	1,800	1,800	1,800					
Professional and Business Services	4,400	4,500	4,600	3,300	3,800	4,100	4,300	4,600					
Educational and Health Services	9,200	9,300	9,000	8,600	8,600	8,500	8,500	8,700					
Leisure and Hospitality	7,300	7,400	7,400	3,600	4,400	4,900	4,900	4,900					
Other Services	1,900	1,900	1,900	1,500	1,600	1,700	1,700	1,700					
Government	8,300	8,700	8,200	8,200	8,000	7,600	7,500	8,100					
Federal Government	500	500	500	500	500	500	500	800					
State and Local Government	7,800	8,200	7,700	7,700	7,500	7,100	7,000	7,300					

Benchmark year 2019, quarter 1, rev. 9/11/2020

Equal Opportunity Employer/ Program available in alternative format/ reasonable accommodations: 602-771-1110, TDD 1-800-367-8939

Nonfarm Employment

Prepared in Cooperation with the U.S. Department of Labor, Bureau of Labor Statistics

Arizona Office of Economic Opportunity

2020

Navajo County

	JAN	FEB	MAR	APR	MAY	JUN	JUL	AUG	SEP	OCT	NOV	DEC	AVG
Total Nonfarm	26,625	26,800	26,950	25,125	25,475	25,200	24,750	26,450					
Total Private	17,075	17,150	17,200	15,675	15,925	16,125	16,025	16,300					
Goods Producing	1,825	1,850	1,800	1,475	1,500	1,525	1,500	1,500					
Mining and Construction	1,525	1,525	1,500	1,250	1,275	1,275	1,250	1,250					
Manufacturing	300	325	300	225	225	250	250	250					
Service-Providing	24,800	24,950	25,150	23,650	23,975	23,675	23,250	24,950					
Private Service-Providing	15,250	15,300	15,400	14,200	14,425	14,600	14,525	14,800					
Trade, Transportation, and Utilities	4,500	4,525	4,525	4,325	4,400	4,525	4,500	4,525					
Information	250	250	250	250	225	225	250	225					
Financial Activities	625	625	625	475	475	475	475	475					
Professional and Business Services	1,175	1,175	1,200	1,075	1,075	1,075	1,075	1,050					
Educational and Health Services	4,675	4,675	4,675	4,450	4,475	4,350	4,275	4,525					
Leisure and Hospitality	3,500	3,525	3,575	3,150	3,300	3,450	3,450	3,500					
Other Services	525	525	550	475	475	500	500	500					
Government	9,550	9,650	9,750	9,450	9,550	9,075	8,725	10,150					
Federal Government	1,750	1,775	1,850	1,775	1,850	1,900	1,775	1,900					
State and Local Government	7,800	7,875	7,900	7,675	7,700	7,175	6,950	8,250					

Benchmark year 2019, quarter 1, rev. 9/11/2020

Equal Opportunity Employer/ Program available in alternative format/ reasonable accommodations: 602-771-1110, TDD 1-800-367-8939

Nonfarm Employment

Prepared in Cooperation with the U.S. Department of Labor, Bureau of Labor Statistics

Arizona Office of Economic Opportunity

2020

Pima County(Tucson MSA)

	JAN	FEB	MAR	APR	MAY	JUN	JUL	AUG	SEP	OCT	NOV	DEC	AVG
Total Nonfarm	391,100	395,600	393,200	361,300	368,900	369,600	364,300	373,200					
Total Private	309,600	312,300	310,800	280,300	289,500	300,500	295,000	295,900					
Goods Producing	47,400	47,600	47,100	45,900	47,300	47,300	46,800	46,900					
Mining and Construction	19,800	20,000	19,800	18,700	20,200	20,300	20,000	20,100					
Manufacturing	27,600	27,600	27,300	27,200	27,100	27,000	26,800	26,800					

Service-Providing	343,700	348,000	346,100	315,400	321,600	322,300	317,500	326,300
Private Service-Providing	262,200	264,700	263,700	234,400	242,200	253,200	248,200	249,000
Trade, Transportation, and Utilities	62,700	62,400	63,000	60,500	61,600	64,100	63,800	65,100
Information	5,400	5,600	5,500	3,900	3,900	4,100	4,000	4,100
Financial Activities	17,100	17,500	17,400	17,000	16,500	16,400	16,300	16,100
Professional and Business Services	50,400	50,900	50,100	46,600	46,900	47,400	46,500	47,000
Educational and Health Services	69,400	69,900	69,500	64,000	64,800	66,000	65,800	65,100
Leisure and Hospitality	43,500	44,600	44,300	30,900	35,500	41,600	38,400	38,200
Other Services	13,700	13,800	13,900	11,500	13,000	13,600	13,400	13,400
Government	81,500	83,300	82,400	81,000	79,400	69,100	69,300	77,300
Federal Government	13,000	13,000	13,100	13,100	13,100	13,100	13,000	13,500
State and Local Government	68,500	70,300	69,300	67,900	66,300	56,000	56,300	63,800

Benchmark year 2019, quarter 1, rev. 9/11/2020

Equal Opportunity Employer/ Program available in alternative format/ reasonable accommodations: 602-771-1110, TDD 1-800-367-8939

Nonfarm Employment

Prepared in Cooperation with the U.S. Department of Labor, Bureau of Labor Statistics

Arizona Office of Economic Opportunity

2020

Pinal County

	JAN	FEB	MAR	APR	MAY	JUN	JUL	AUG	SEP	OCT	NOV	DEC	AVG
Total Nonfarm	62,375	63,275	63,250	54,750	54,900	53,775	53,325	55,875					
Total Private	42,575	43,100	43,025	34,725	34,525	34,300	34,250	34,675					
Goods Producing	7,650	7,700	7,725	6,950	6,950	7,025	7,125	7,100					
Mining and Construction	3,500	3,500	3,550	3,150	3,150	3,200	3,250	3,225					
Manufacturing	4,150	4,200	4,175	3,800	3,800	3,825	3,875	3,875					
Service-Providing	54,725	55,575	55,525	47,800	47,950	46,750	46,200	48,775					
Private Service-Providing	34,925	35,400	35,300	27,775	27,575	27,275	27,125	27,575					
Trade, Transportation, and Utilities	11,250	11,275	11,350	9,575	9,625	9,625	9,675	9,700					
Information	575	575	575	450	450	450	425	425					
Financial Activities	1,550	1,550	1,575	1,275	1,250	1,225	1,225	1,225					
Professional and Business Services	6,725	6,700	6,725	5,525	5,450	5,450	5,400	5,425					
Educational and Health Services	6,850	6,925	6,975	5,675	5,700	5,475	5,400	5,750					
Leisure and Hospitality	6,300	6,675	6,425	4,175	3,975	3,925	3,875	3,950					
Other Services	1,675	1,700	1,675	1,100	1,125	1,125	1,125	1,100					
Government	19,800	20,175	20,225	20,025	20,375	19,475	19,075	21,200					
Federal Government	1,475	1,450	1,450	1,375	1,375	1,400	1,400	1,425					
State and Local Government	18,325	18,725	18,775	18,650	19,000	18,075	17,675	19,775					

Benchmark year 2019, quarter 1, rev. 9/11/2020

Equal Opportunity Employer/ Program available in alternative format/ reasonable accommodations: 602-771-1110, TDD 1-800-367-8939

Nonfarm Employment

Prepared in Cooperation with the U.S. Department of Labor, Bureau of Labor Statistics

Arizona Office of Economic Opportunity

2020

Santa Cruz County

	JAN	FEB	MAR	APR	MAY	JUN	JUL	AUG	SEP	OCT	NOV	DEC	AVG
Total Nonfarm	13,475	13,500	13,475	12,175	12,200	12,000	11,225	12,075					
Total Private	9,700	9,700	9,675	8,375	8,400	8,300	7,725	7,700					
Goods Producing	700	675	675	550	550	550	525	525					
Service-Providing	12,775	12,825	12,800	11,625	11,650	11,450	10,700	11,550					
Private Service-Providing	9,000	9,025	9,000	7,825	7,850	7,750	7,200	7,175					
Trade, Transportation, and Utilities	5,650	5,625	5,600	5,075	5,100	5,100	4,625	4,525					
Other Private Service-Providing	3,350	3,400	3,400	2,750	2,750	2,650	2,575	2,650					
Government	3,775	3,800	3,800	3,800	3,800	3,700	3,500	4,375					
Federal Government	1,725	1,725	1,725	1,725	1,725	1,725	1,750	1,750					
State and Local Government	2,050	2,075	2,075	2,075	2,075	1,975	1,750	2,625					

Benchmark year 2019, quarter 1, rev. 9/11/2020

Equal Opportunity Employer/ Program available in alternative format/ reasonable accomodations: 602-771-1110, TDD 1-800-367-8939

Nonfarm Employment

Prepared in Cooperation with the U.S. Department of Labor, Bureau of Labor Statistics

Arizona Office of Economic Opportunity

2020

Yavapai County(Prescott MSA)

	JAN	FEB	MAR	APR	MAY	JUN	JUL	AUG	SEP	OCT	NOV	DEC	AVG
Total Nonfarm	65,400	66,200	65,800	62,100	63,900	64,600	64,000	65,600					
Total Private	54,300	54,700	54,400	50,800	52,800	54,500	54,000	54,600					
Goods Producing	9,800	9,900	9,900	9,700	9,800	10,200	10,300	10,400					
Mining and Construction	6,100	6,200	6,200	6,200	6,200	6,500	6,500	6,700					
Manufacturing	3,700	3,700	3,700	3,500	3,600	3,700	3,800	3,700					
Service-Providing	55,600	56,300	55,900	52,400	54,100	54,400	53,700	55,200					
Private Service-Providing	44,500	44,800	44,500	41,100	43,000	44,300	43,700	44,200					
Trade, Transportation, and Utilities	12,500	12,400	12,400	12,300	12,400	12,700	12,500	12,600					
Information	500	500	500	500	500	500	500	500					
Financial Activities	2,100	2,100	2,100	2,100	2,100	2,100	2,100	2,100					
Professional and Business Services	4,400	4,500	4,400	4,200	4,300	4,200	4,300	4,400					
Educational and Health Services	12,500	12,600	12,500	11,900	11,900	12,000	12,000	12,500					
Leisure and Hospitality	10,200	10,400	10,300	8,300	9,900	10,700	10,200	9,900					
Other Services	2,300	2,300	2,300	1,800	1,900	2,100	2,100	2,200					

Government	11,100	11,500	11,400	11,300	11,100	10,100	10,000	11,000
Federal Government	1,500	1,500	1,600	1,700	1,700	1,700	1,600	1,900
State and Local Government	9,600	10,000	9,800	9,600	9,400	8,400	8,400	9,100

Benchmark year 2019, quarter 1, rev. 9/11/2020

Equal Opportunity Employer/ Program available in alternative format/ reasonable accommodations: 602-771-1110, TDD 1-800-367-8939

Nonfarm Employment

Prepared in Cooperation with the U.S. Department of Labor, Bureau of Labor Statistics

Arizona Office of Economic Opportunity

2020

Yuma County(Yuma MSA)

	JAN	FEB	MAR	APR	MAY	JUN	JUL	AUG	SEP	OCT	NOV	DEC	AVG
Total Nonfarm	58,800	59,300	59,100	52,300	52,900	51,800	52,000	54,100					
Total Private	43,900	44,300	44,100	37,900	38,600	38,700	39,000	39,800					
Goods Producing	5,800	5,900	5,900	5,500	5,200	5,000	4,900	4,900					
Mining and Construction	3,000	3,100	3,100	2,700	2,600	2,400	2,300	2,300					
Manufacturing	2,800	2,800	2,800	2,800	2,600	2,600	2,600	2,600					
Service-Providing	53,000	53,400	53,200	46,800	47,700	46,800	47,100	49,200					
Private Service-Providing	38,100	38,400	38,200	32,400	33,400	33,700	34,100	34,900					
Trade, Transportation, and Utilities	12,200	12,300	12,200	11,200	11,200	11,400	11,700	11,800					
Information	400	400	400	400	400	400	400	400					
Financial Activities	2,100	2,100	2,100	2,000	2,000	2,000	2,000	2,100					
Professional and Business Services	6,300	6,300	6,400	5,500	5,400	5,400	5,600	5,700					
Educational and Health Services	8,600	8,600	8,500	7,800	7,600	7,400	7,400	7,900					
Leisure and Hospitality	6,700	6,900	6,800	3,900	5,200	5,400	5,300	5,200					
Other Services	1,800	1,800	1,800	1,600	1,600	1,700	1,700	1,800					
Government	14,900	15,000	15,000	14,400	14,300	13,100	13,000	14,300					
Federal Government	3,700	3,700	3,700	3,700	3,700	3,700	3,700	3,900					
State and Local Government	11,200	11,300	11,300	10,700	10,600	9,400	9,300	10,400					

Benchmark year 2019, quarter 1, rev. 9/11/2020

Equal Opportunity Employer/ Program available in alternative format/ reasonable accommodations: 602-771-1110, TDD 1-800-367-8939

About This Publication

Arizona's Workforce is published 14 times a year by the State of Arizona Office of Economic Opportunity (OEO) — 12 times as the monthly Employment Report and twice a year as a two-year Forecast Report. OEO is the state agency responsible for labor market information and demographic data for the state of Arizona.

Material published in *Arizona's Workforce* is in the public domain and can be reproduced without further permission. Appropriate citations are requested.

Next Release:

September Employment Report, Thursday, October 15th 2020, 10:00 am

Location: ACA Conference Rooms, Camelback, 100 North 7th Avenue, Phoenix, AZ 85007

Office of Economic Opportunity

Sandra Watson	Interim Director
Doug Walls	Research Administrator
Stephanie Faltermeier	Labor System Manager

On the web: <https://laborstats.az.gov/>

Phone: 602-771-2222

To be placed on the *Arizona Workforce* email distribution list, or to send feedback or questions, contact:

labor.info@azstats.gov

— Equal Opportunity Employer/Program —

Under Titles VI and VII of the Civil Rights Act of 1964 (Title VI & VII), and the Americans with Disabilities Act of 1990 (ADA), Section 504 of the Rehabilitation Act of 1973, and the Age Discrimination Act of 1975, the Department prohibits discrimination in admissions, programs, services, activities, or employment based on race, color, religion, sex, national origin, age, and disability. The Department must make a reasonable accommodation to allow a person with a disability to take part in a program, service or activity. For example, this means if necessary, the Department must provide sign language interpreters for people who are deaf, a wheelchair accessible location, or enlarged print materials. It also means that the Department will take any other reasonable action that allows you to take part in and understand a program or activity, including making reasonable changes to an activity. If you believe that you will not be able to understand or take part in a program or activity because of your disability, please let us know of your disability needs in advance if at all possible. To request this document in alternative format or for further information about this policy, contact the Department of Economic Security, Division of Developmental Disabilities ADA Coordinator at 602 542-6825 ; TTY/TDD Services: 7-1-1.

This page left intentionally blank.