



# OFFICE OF ECONOMIC OPPORTUNITY

## Monthly Employment Report

November 19, 2020

### Nonfarm Employment Increased by 43,100 Jobs over the Month in October 2020 Arizona Unemployment Rate Increased to 8.0%

The Arizona seasonally-adjusted unemployment rate increased to 8.0% in October from 6.5% in September. The U.S. seasonally-adjusted unemployment rate decreased to 6.9% in September from 7.9% in October. Over the month, Arizona's seasonally-adjusted labor force increased by 11,320 individuals or 0.3%. Over the year, labor force levels decreased by 8,380 individuals or -0.2%.

#### Over the Month

Arizona nonfarm employment increased by 43,100 jobs or 1.5% in October. Historically (2010-2019), nonfarm employment has averaged a gain of 27,500 jobs in October.

The Government sector recorded a loss of 300 jobs in October. The private sector recorded a gain of 43,400 jobs in October. Historically (2010-2019), private sector employment has averaged a gain of 24,100 jobs in October.

#### Arizona, U.S. Economic Indicators

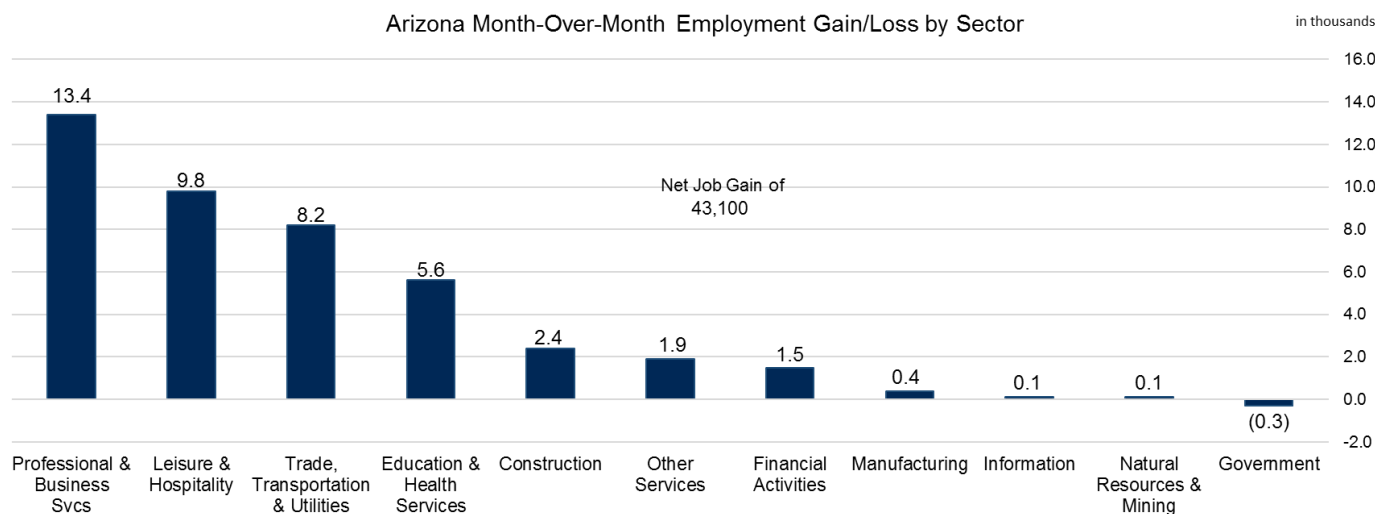
##### Unemployment Rate (Seasonally Adj.)

	Oct '20	Sep '20	Oct '19
United States	6.9%	7.9%	3.6%
Arizona	8.0%	6.5%	4.5%
Arizona (Unadj. Rate)	7.9%	6.6%	4.5%

##### Arizona Nonfarm Employment (in Thousands)

	Oct '20	Sep '20	Oct '19
Overall	2,908.5	2,865.4	2,982.3
Over-Month % Chg.	1.5%	1.2%	1.0%
Year-to-Year % Chg.	-2.5%	-3.0%	2.6%

Arizona Month-Over-Month Employment Gain/Loss by Sector



Source: Produced by the Arizona Office of Economic Opportunity in cooperation with the U.S. Dept. of Labor, Bureau of Labor Statistics

Private sector employment gains were reported in the following sectors:

- Professional and Business Services (13,400 jobs)
- Leisure and Hospitality (9,800 jobs)
- Trade, Transportation and Utilities (8,200 jobs)
- Education and Health Services (5,600 jobs)

- Construction (2,400 jobs)
- Other Services (1,900 jobs)
- Financial Activities (1,500 jobs)
- Manufacturing (400 jobs)
- Information (100 jobs)
- Natural Resources and Mining (100 jobs)

## Over the Year

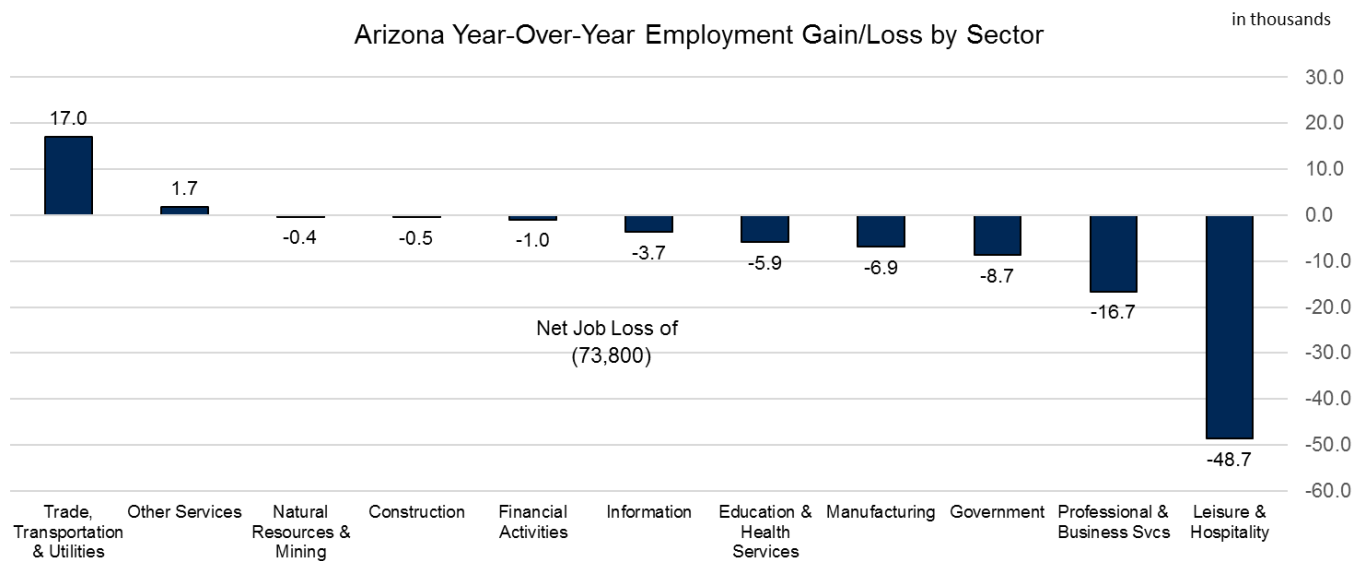
Arizona nonfarm employment decreased by 73,800 jobs or -2.5% in October. A majority of the losses were recorded in private sector employment (-65,100 jobs), while Government recorded losses of 8,700 jobs in September.

Gains were reported in:

- Trade, Transportation and Utilities (17,000 jobs)
- Other Services (1,700 jobs)

Losses were reported in:

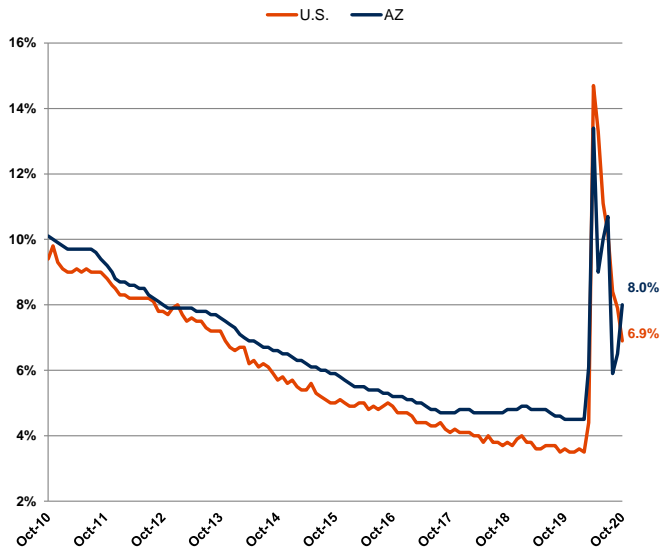
- Leisure and Hospitality (-48,700 jobs)
- Professional and Business Services (-16,700 jobs)
- Manufacturing (-6,900 jobs)
- Education and Health Services (-5,900 jobs)
- Information (-3,700 jobs)
- Financial Activities (-1,000 jobs)
- Construction (-500 jobs)
- Natural Resources and Mining (-400 jobs)



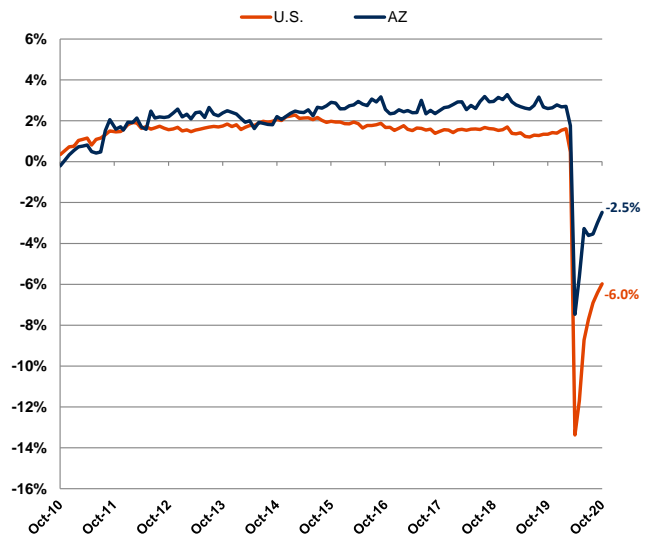
Source: Produced by the Arizona Office of Economic Opportunity in cooperation with the U.S. Dept. of Labor, Bureau of Labor Statistics

# LABOR MARKET TRENDS CHARTS

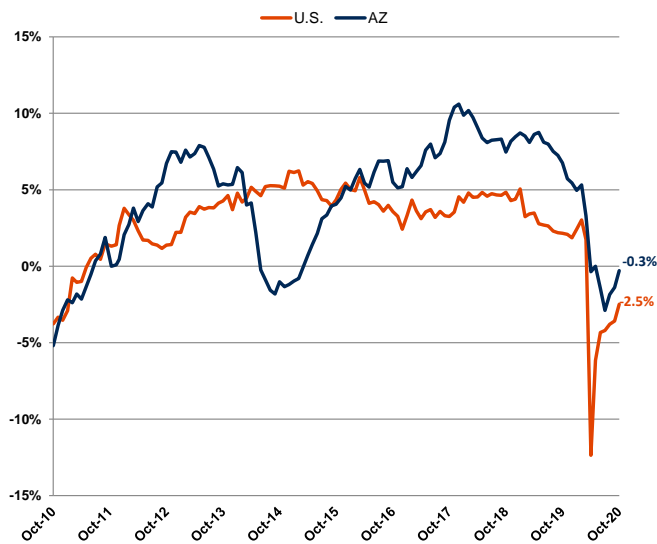
**Arizona & U.S. Unemployment Rate**  
Seasonally Adjusted



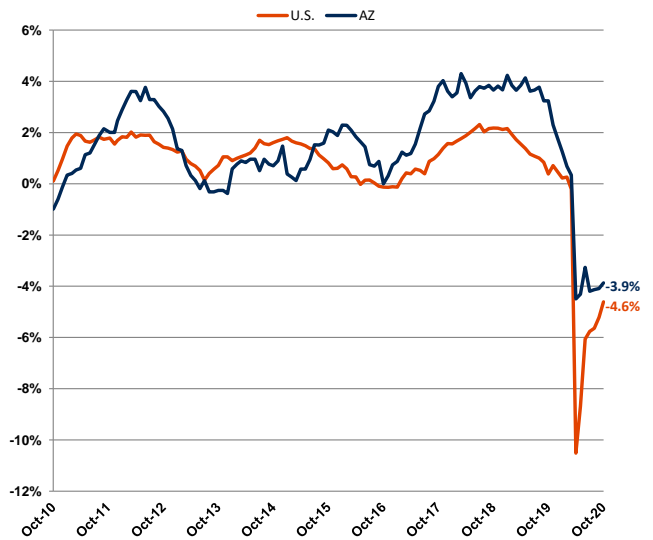
**Arizona & U.S. Nonfarm Employment**  
Year-to-Year Percent Change



**Arizona & U.S. Construction Employment**  
Year-to-Year Percent Change



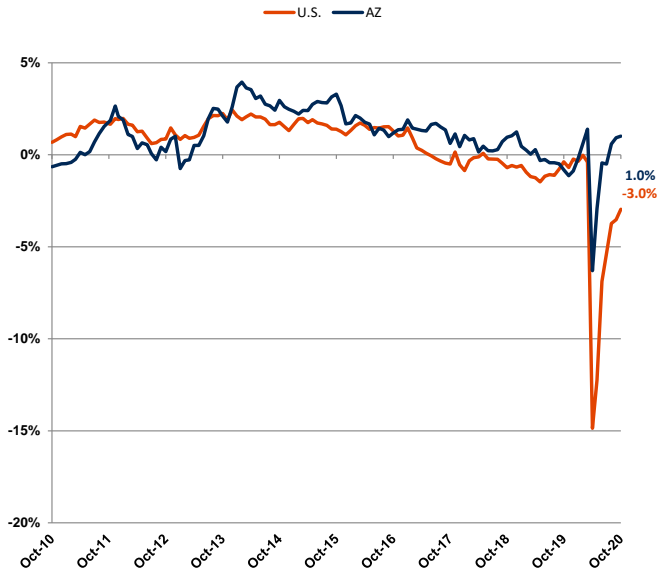
**Arizona & U.S. Manufacturing Employment**  
Year-to-Year Percent Change



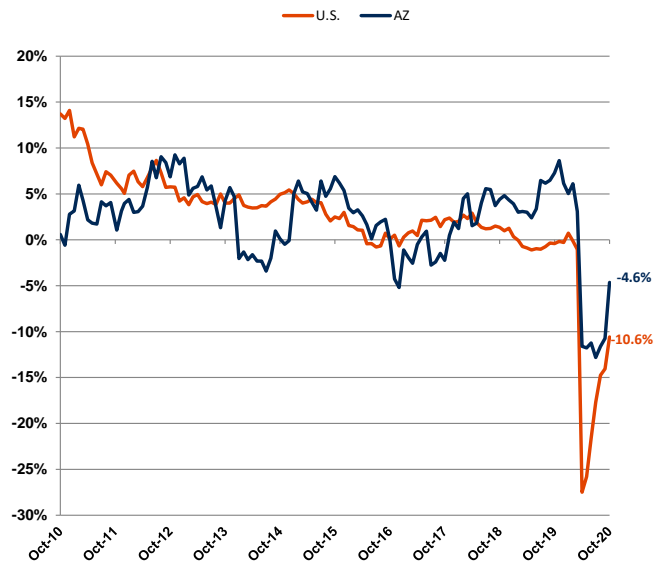
Source: Prepared by the Arizona Office of Economic Opportunity, in cooperation with the U.S. Dept. of Labor, Bureau of Labor Statistics

# LABOR MARKET TRENDS CHARTS

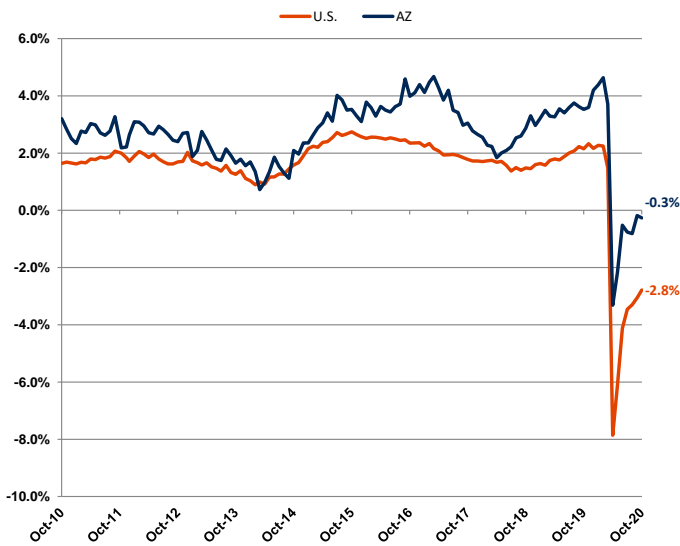
**Arizona & U.S. Retail Trade**  
Year-to-Year Percent Change



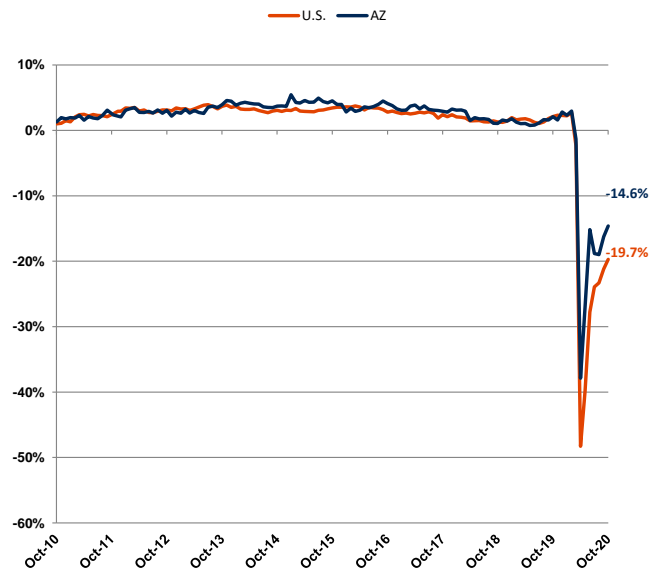
**Arizona & U.S. Employment Services**  
Year-to-Year Percent Change



**Arizona & U.S. Health Care**  
Year-to-Year Percent Change



**Arizona & U.S. Leisure & Hospitality**  
Year-to-Year Percent Change



Source: Prepared by the Arizona Office of Economic Opportunity, in cooperation with the U.S. Dept. of Labor, Bureau of Labor Statistics

Table 1

Labor Force, Employment, Unemployment and Unemployment Rates<sup>(a)</sup>

(in Thousands)

<u>ARIZONA</u>	<u>Monthly/Yearly Change</u>				
	October 2020 <sup>(c)</sup>	September 2020 <sup>(d)</sup>	September 2019 <sup>(d)</sup>	September '20 - October '20	October '19 - October '20
Civilian Labor Force <sup>(e)</sup>	3,594.6	3,587.4	3,601.1	7.2	-6.5
Unemployment	284.6	237.0	161.1	47.6	123.5
Unemployment Rate	7.9%	6.6%	4.5%	1.3	3.4
Unemployment Rate (Seasonally Adjusted) <sup>(f)</sup>	8.0%	6.5%	4.5%	1.5	3.5
Total Employment	3,310.0	3,350.4	3,440.0	-40.5	-130.0
<u>FLAGSTAFF MSA (Coconino County)</u>					
Civilian Labor Force <sup>(e)</sup>	70.1	70.0	79.3	0.1	-9.2
Unemployment	6.8	5.7	3.9	1.1	2.9
Unemployment Rate (Unadjusted)	9.7%	8.2%	4.9%	1.5	4.8
Total Employment	63.3	64.3	75.4	-0.9	-12.1
<u>LAKE HAVASU CITY-KINGMAN MSA (Mohave County)</u>					
Civilian Labor Force <sup>(e)</sup>	87.4	87.4	88.3	0.0	-0.8
Unemployment	7.9	6.9	4.8	1.0	3.1
Unemployment Rate (Unadjusted)	9.1%	7.9%	5.4%	1.2	3.7
Total Employment	79.5	80.5	83.5	-1.0	-4.0
<u>PHOENIX-MESA-SCOTTSDALE MSA (Maricopa &amp; Pinal Counties)</u>					
Civilian Labor Force <sup>(e)</sup>	2,547.6	2,539.4	2,535.9	8.2	11.8
Unemployment	191.7	156.8	97.7	35.0	94.0
Unemployment Rate (Unadjusted)	7.5%	6.2%	3.9%	1.3	3.6
Total Employment	2,355.9	2,382.7	2,438.2	-26.8	-82.3
<u>PRESCOTT MSA (Yavapai County)</u>					
Civilian Labor Force <sup>(e)</sup>	109.1	110.0	107.7	-0.9	1.4
Unemployment	7.6	6.1	4.5	1.4	3.0
Unemployment Rate (Unadjusted)	6.9%	5.6%	4.2%	1.3	2.7
Total Employment	101.6	103.8	103.2	-2.3	-1.6
<u>SIERRA VISTA-DOUGLAS MSA (Cochise County)</u>					
Civilian Labor Force <sup>(e)</sup>	52.2	52.3	51.6	-0.1	0.5
Unemployment	3.4	2.9	2.7	0.5	0.7
Unemployment Rate (Unadjusted)	6.6%	5.5%	5.3%	1.1	1.3
Total Employment	48.8	49.4	48.9	-0.7	-0.2

Notes: For notes and source, see end of Table 1

(Continued on next page)

Table 1 (Cont.)

Labor Force, Employment, Unemployment and Unemployment Rates<sup>(a)(b)</sup>

(in Thousands)

	Monthly/Yearly Change				
<b>TUCSON MSA (Pima County)</b>	October 2020(c)	September 2020(d)	September 2019(d)	September '20 - October '20	October '19 - October '20
Civilian Labor Force <sup>(c)</sup>	499.1	499.1	501.6	0.0	-2.5
Unemployment	39.4	31.5	21.3	7.9	18.1
Unemployment Rate (Unadjusted)	7.9%	6.3%	4.2%	1.6	3.7
Total Employment	459.7	467.6	480.3	-7.9	-20.6
<b>YUMA MSA (Yuma County)</b>					
Civilian Labor Force <sup>(e)</sup>	97.5	97.4	103.0	0.1	-5.4
Unemployment	15.2	16.3	17.1	-1.0	-1.9
Unemployment Rate (Unadjusted)	15.6%	16.7%	16.6%	-1.1	-1.0
Total Employment	82.3	81.2	85.9	1.1	-3.6

**Notes:** a) Labor force, unemployment, total employment, and unadjusted unemployment rates are produced by the Local Area Unemployment Statistics (LAUS) program in the Arizona Office of Employment and Population Statistics, in cooperation with the U.S. Dept. of Labor, Bureau of Labor Statistics (BLS). BLS data used as part of the input in producing LAUS data come from the monthly Household Survey, produced by the Census Bureau for the U.S. Department of Labor, Bureau of Labor Statistics.

For more information on the LAUS program, visit this website: <http://www.bls.gov/lau/laufaq.htm>

c) Preliminary

d) Revised

e) Adjusted to Current Population Survey (CPS 2017) to reflect place of residence

f) Normal seasonal variations have been eliminated to reflect underlying trends

MSA - Metropolitan Statistical Area

NA - Not Available

Source: Prepared by the Arizona Office of Economic Opportunity, in cooperation with the U.S. Dept. of Labor, Bureau of Labor Statistics

Table 2

## Nonfarm Payroll Employment

(in Thousands, Not Seasonally Adjusted)

ARIZONA <sup>(a)</sup>				Amount Change		Percent Change	
	October 2020(b)	September 2020(c)	October 2019(c)	Monthly	Over-Year	Monthly	Over-Year
				September '20 - October '20	October '19 - October '20	September '20 - October '20	October '19 - October '20
<b>Total Nonfarm Payroll Employment<sup>(c,d)</sup></b>	<b>2,908.5</b>	<b>2,865.4</b>	<b>2,982.3</b>	<b>43.1</b>	<b>-73.8</b>	<b>1.5%</b>	<b>-2.5%</b>
Private Sector	2,480.1	2,436.7	2,545.2	43.4	-65.1	1.8%	-2.6%
Government	428.4	428.7	437.1	-0.3	-8.7	-0.1%	-2.0%
<b>Goods-Producing Industries</b>	<b>358.0</b>	<b>355.1</b>	<b>365.8</b>	<b>2.9</b>	<b>-7.8</b>	<b>0.8%</b>	<b>-2.1%</b>
<b>Manufacturing</b>	<b>171.6</b>	<b>171.2</b>	<b>178.5</b>	<b>0.4</b>	<b>-6.9</b>	<b>0.2%</b>	<b>-3.9%</b>
Durable Goods	129.8	130.1	135.0	-0.3	-5.2	-0.2%	-3.9%
Fabricated Metal	19.2	19.2	20.7	0.0	-1.5	0.0%	-7.2%
Computer and Electronic Parts	34.9	34.9	33.2	0.0	1.7	0.0%	5.1%
Aerospace Products and Parts	31.0	31.7	31.1	-0.7	-0.1	-2.2%	-0.3%
Nondurable Goods	41.8	41.1	43.5	0.7	-1.7	1.7%	-3.9%
<b>Natural Resources and Mining</b>	<b>13.2</b>	<b>13.1</b>	<b>13.6</b>	<b>0.1</b>	<b>-0.4</b>	<b>0.8%</b>	<b>-2.9%</b>
Metal Ore Mining	11.4	11.3	11.4	0.1	0.0	0.9%	0.0%
<b>Construction</b>	<b>173.2</b>	<b>170.8</b>	<b>173.7</b>	<b>2.4</b>	<b>-0.5</b>	<b>1.4%</b>	<b>-0.3%</b>
Buildings	36.2	35.3	35.9	0.9	0.3	2.5%	0.8%
Heavy	19.9	19.7	21.4	0.2	-1.5	1.0%	-7.0%
Specialty Trades	117.1	115.8	116.4	1.3	0.7	1.1%	0.6%
<b>Service-Providing Industries</b>	<b>2,550.5</b>	<b>2,510.3</b>	<b>2,616.5</b>	<b>40.2</b>	<b>-66.0</b>	<b>1.6%</b>	<b>-2.5%</b>
<b>Private Service Providing</b>	<b>2,122.1</b>	<b>2,081.6</b>	<b>2,179.4</b>	<b>40.5</b>	<b>-57.3</b>	<b>1.9%</b>	<b>-2.6%</b>
<b>Trade, Transportation and Utilities</b>	<b>561.8</b>	<b>553.6</b>	<b>544.8</b>	<b>8.2</b>	<b>17.0</b>	<b>1.5%</b>	<b>3.1%</b>
Trade	430.9	429.2	425.2	1.7	5.7	0.4%	1.3%
Wholesale Trade	101.5	103.9	99.1	-2.4	2.4	-2.3%	2.4%
Retail Trade	329.4	325.3	326.1	4.1	3.3	1.3%	1.0%
Motor Vehicles and Parts	48.0	47.5	49.7	0.5	-1.7	1.1%	-3.4%
Furniture and Home Furnishings	7.5	7.3	10.0	0.2	-2.5	2.7%	-25.0%
Building Material, Garden Supply	28.5	28.4	26.6	0.1	1.9	0.4%	7.1%
Food and Beverage	62.3	61.9	59.7	0.4	2.6	0.6%	4.4%
Clothing and Accessories	15.7	15.1	20.3	0.6	-4.6	4.0%	-22.7%
General Merchandise	66.5	65.8	63.3	0.7	3.2	1.1%	5.1%
Department Stores	22.6	22.0	23.2	0.6	-0.6	2.7%	-2.6%
Other General merchandise	43.9	43.8	40.1	0.1	3.8	0.2%	9.5%
Transp., Warehousing, and Utilities	130.9	124.4	119.6	6.5	11.3	5.2%	9.4%
Utilities	12.9	12.7	12.4	0.2	0.5	1.6%	4.0%
Transportation and Warehousing	118.0	111.7	107.2	6.3	10.8	5.6%	10.1%
Truck Transportation	24.2	23.6	23.4	0.6	0.8	2.5%	3.4%
<b>Information</b>	<b>45.4</b>	<b>45.3</b>	<b>49.1</b>	<b>0.1</b>	<b>-3.7</b>	<b>0.2%</b>	<b>-7.5%</b>
Telecommunications	15.0	15.0	15.5	0.0	-0.5	0.0%	-3.2%
<b>Financial Activities</b>	<b>233.0</b>	<b>231.5</b>	<b>234.0</b>	<b>1.5</b>	<b>-1.0</b>	<b>0.6%</b>	<b>-0.4%</b>
Finance and Insurance	177.9	177.0	177.6	0.9	0.3	0.5%	0.2%
Credit Intermediation., Monetary Auth.	91.9	91.7	90.6	0.2	1.3	0.2%	1.4%
Financial Investments and Vehicles	20.9	20.8	20.5	0.1	0.4	0.5%	2.0%
Insurance Carriers	65.1	64.5	66.5	0.6	-1.4	0.9%	-2.1%
Real Estate and Rental and Leasing	55.1	54.5	56.4	0.6	-1.3	1.1%	-2.3%
<b>Professional and Business Services</b>	<b>434.5</b>	<b>421.1</b>	<b>451.2</b>	<b>13.4</b>	<b>-16.7</b>	<b>3.2%</b>	<b>-3.7%</b>
Professional, Scientific and Technical Services	161.8	158.2	159.8	3.6	2.0	2.3%	1.3%
Management of Companies and Enterprises	30.4	29.7	30.7	0.7	-0.3	2.4%	-1.0%
Administrative and Waste Services	242.3	233.2	260.7	9.1	-18.4	3.9%	-7.1%
Employment Services	106.9	98.1	112.1	8.8	-5.2	9.0%	-4.6%
Business Support Services	34.6	34.3	39.7	0.3	-5.1	0.9%	-12.8%
Services to Buildings and Dwellings	46.0	43.2	45.6	2.8	0.4	6.5%	0.9%
<b>Education and Health Services</b>	<b>465.0</b>	<b>459.4</b>	<b>470.9</b>	<b>5.6</b>	<b>-5.9</b>	<b>1.2%</b>	<b>-1.3%</b>
Educational Services	69.9	67.3	71.7	2.6	-1.8	3.9%	-2.5%
Health Care and Social Assistance	395.1	392.1	399.2	3.0	-4.1	0.8%	-1.0%
Health Care	333.9	331.2	334.8	2.7	-0.9	0.8%	-0.3%
Ambulatory Health Care Services	176.7	175.0	174.6	1.7	2.1	1.0%	1.2%
Hospitals	99.7	99.6	100.4	0.1	-0.7	0.1%	-0.7%
Nursing and Residential Care Facilities	57.5	56.6	59.8	0.9	-2.3	1.6%	-3.8%
Social Assistance	61.2	60.9	64.4	0.3	-3.2	0.5%	-5.0%
<b>Leisure and Hospitality</b>	<b>284.7</b>	<b>274.9</b>	<b>333.4</b>	<b>9.8</b>	<b>-48.7</b>	<b>3.6%</b>	<b>-14.6%</b>
Arts, Entertainment and Recreation	31.7	29.9	46.3	1.8	-14.6	6.0%	-31.5%
Accommodation and Food Services	253.0	245.0	287.1	8.0	-34.1	3.3%	-11.9%
Accommodation	31.7	30.5	45.6	1.2	-13.9	3.9%	-30.5%
Food Services and Drinking Places	221.3	214.5	241.5	6.8	-20.2	3.2%	-8.4%
<b>Other Services (except Public Administration)</b>	<b>97.7</b>	<b>95.8</b>	<b>96.0</b>	<b>1.9</b>	<b>1.7</b>	<b>2.0%</b>	<b>1.8%</b>
<b>Government</b>	<b>428.4</b>	<b>428.7</b>	<b>437.1</b>	<b>-0.3</b>	<b>-8.7</b>	<b>-0.1%</b>	<b>-2.0%</b>
Federal Government	59.2	62.4	56.8	-3.2	2.4	-5.1%	4.2%
State Government	96.7	96.0	97.2	0.7	-0.5	0.7%	-0.5%
State Government Education	58.6	57.9	60.0	0.7	-1.4	1.2%	-2.3%
Other State Government	38.1	38.1	37.2	0.0	0.9	0.0%	2.4%
Local Government	272.5	270.3	283.1	2.2	-10.6	0.8%	-3.7%
Local Government Education	142.2	140.7	148.5	1.5	-6.3	1.1%	-4.2%
Other Local Government	130.3	129.6	134.6	0.7	-4.3	0.5%	-3.2%

Note: For notes and source, see end of Table 2

Table 2 (Cont.)

## Nonfarm Payroll Employment

(in Thousands, Not Seasonally Adjusted)

PHOENIX-MESA-SCOTTSDALE MSA <sup>1</sup>	October 2020(b)	September 2020(c)	October 2019(c)	Amount Change		Percent Change	
				Monthly	Over-Year	Monthly	Over-Year
				September '20 - October '20	October '19 - October '20	September '20 - October '20	October '19 - October '20
<b>Total Nonfarm Payroll Employment<sup>(c,d)</sup></b>	2,164.8	2,130.1	2,216.9	<b>34.7</b>	<b>-52.1</b>	<b>1.6%</b>	<b>-2.4%</b>
Private Sector	1,915.8	1,881.2	1,962.9	34.6	-47.1	1.8%	-2.4%
Government	249.0	248.9	254.0	0.1	-5.0	0.0%	-2.0%
<b>Goods-Producing Industries</b>	<b>271.1</b>	<b>268.8</b>	<b>274.6</b>	<b>2.3</b>	<b>-3.5</b>	<b>0.9%</b>	<b>-1.3%</b>
<b>Manufacturing</b>	<b>131.2</b>	<b>130.9</b>	<b>134.5</b>	<b>0.3</b>	<b>-3.3</b>	<b>0.2%</b>	<b>-2.5%</b>
Durable Goods	96.6	96.9	99.0	-0.3	-2.4	-0.3%	-2.4%
Computer and Electronic Parts	30.8	30.9	29.3	-0.1	1.5	-0.3%	5.1%
Aerospace Products and Parts	16.5	16.8	17.0	-0.3	-0.5	-1.8%	-2.9%
Nondurable Goods	34.6	34.0	35.5	0.6	-0.9	1.8%	-2.5%
<b>Natural Resources and Mining</b>	<b>3.3</b>	<b>3.3</b>	<b>3.6</b>	<b>0.0</b>	<b>-0.3</b>	<b>0.0%</b>	<b>-8.3%</b>
<b>Construction</b>	<b>136.6</b>	<b>134.6</b>	<b>136.5</b>	<b>2.0</b>	<b>0.1</b>	<b>1.5%</b>	<b>0.1%</b>
Buildings	29.8	29.1	28.6	0.7	1.2	2.4%	4.2%
Heavy	15.6	15.5	16.9	0.1	-1.3	0.6%	-7.7%
Specialty Trades	91.2	90.0	91.0	1.2	0.2	1.3%	0.2%
<b>Service-Providing Industries</b>	<b>1,893.7</b>	<b>1,861.3</b>	<b>1,942.3</b>	<b>32.4</b>	<b>-48.6</b>	<b>1.7%</b>	<b>-2.5%</b>
<b>Private Service Providing</b>	<b>1,644.7</b>	<b>1,612.4</b>	<b>1,688.3</b>	<b>32.3</b>	<b>-43.6</b>	<b>2.0%</b>	<b>-2.6%</b>
<b>Trade, Transportation and Utilities</b>	<b>422.4</b>	<b>417.5</b>	<b>413.0</b>	<b>4.9</b>	<b>9.4</b>	<b>1.2%</b>	<b>2.3%</b>
Trade	322.0	321.1	319.6	0.9	2.4	0.3%	0.8%
Wholesale Trade	86.1	88.0	83.4	-1.9	2.7	-2.2%	3.2%
Retail Trade	235.9	233.1	236.2	2.8	-0.3	1.2%	-0.1%
Motor Vehicles and Parts	34.9	34.6	36.2	0.3	-1.3	0.9%	-3.6%
Building Material, Garden Supply	20.0	20.1	18.6	-0.1	1.4	-0.5%	7.5%
Food and Beverage	43.1	42.9	41.4	0.2	1.7	0.5%	4.1%
General Merchandise	45.4	44.5	42.4	0.9	3.0	2.0%	7.1%
Department Stores	15.7	15.1	16.6	0.6	-0.9	4.0%	-5.4%
Other General merchandise	29.7	29.4	25.8	0.3	3.9	1.0%	15.1%
Transportation, Warehousing and Utilities	100.4	96.4	93.4	4.0	7.0	4.1%	7.5%
Utilities	8.7	8.6	8.3	0.1	0.4	1.2%	4.8%
Transportation and warehousing	91.7	87.8	85.1	3.9	6.6	4.4%	7.8%
Truck transportation	19.7	19.2	18.1	0.5	1.6	2.6%	8.8%
<b>Information</b>	<b>38.1</b>	<b>38.1</b>	<b>40.9</b>	<b>0.0</b>	<b>-2.8</b>	<b>0.0%</b>	<b>-6.8%</b>
Telecommunications	12.5	12.5	13.1	0.0	-0.6	0.0%	-4.6%
<b>Financial Activities</b>	<b>206.9</b>	<b>205.0</b>	<b>206.4</b>	<b>1.9</b>	<b>0.5</b>	<b>0.9%</b>	<b>0.2%</b>
Finance and Insurance	162.0	160.7	160.5	1.3	1.5	0.8%	0.9%
Credit Intermediation., Monetary Auth.	85.7	85.4	83.5	0.3	2.2	0.4%	2.6%
Financial Investments and Vehicles	18.1	18.1	18.3	0.0	-0.2	0.0%	-1.1%
Insurance Carriers	58.2	57.2	58.7	1.0	-0.5	1.7%	-0.9%
Real Estate and Rental and Leasing	44.9	44.3	45.9	0.6	-1.0	1.4%	-2.2%
<b>Professional and Business Services</b>	<b>362.5</b>	<b>350.3</b>	<b>375.7</b>	<b>12.2</b>	<b>-13.2</b>	<b>3.5%</b>	<b>-3.5%</b>
Professional, Scientific and Technical Services	132.2	129.4	130.3	2.8	1.9	2.2%	1.5%
Management of Companies and Enterprises	28.4	27.7	28.5	0.7	-0.1	2.5%	-0.4%
Administrative and Waste Services	201.9	193.2	216.9	8.7	-15.0	4.5%	-6.9%
Employment Services	93.5	85.6	99.0	7.9	-5.5	9.2%	-5.6%
Business Support Services	24.9	24.7	27.9	0.2	-3.0	0.8%	-10.8%
Services to Buildings and Dwellings	36.5	33.2	35.8	3.3	0.7	9.9%	2.0%
<b>Education and Health Services</b>	<b>344.7</b>	<b>339.5</b>	<b>345.8</b>	<b>5.2</b>	<b>-1.1</b>	<b>1.5%</b>	<b>-0.3%</b>
Educational Services	58.7	56.4	59.9	2.3	-1.2	4.1%	-2.0%
Health Care and Social Assistance	286.0	283.1	285.9	2.9	0.1	1.0%	0.0%
Health Care	241.6	238.7	238.8	2.9	2.8	1.2%	1.2%
Ambulatory Health Care Services	135.2	133.6	132.2	1.6	3.0	1.2%	2.3%
Hospitals	66.1	65.5	65.5	0.6	0.6	0.9%	0.9%
Nursing and Residential Care Facilities	40.3	39.6	41.1	0.7	-0.8	1.8%	-1.9%
Social Assistance	44.4	44.4	47.1	0.0	-2.7	0.0%	-5.7%
<b>Leisure and Hospitality</b>	<b>197.1</b>	<b>189.9</b>	<b>234.7</b>	<b>7.2</b>	<b>-37.6</b>	<b>3.8%</b>	<b>-16.0%</b>
Arts, Entertainment and Recreation	24.8	23.4	36.2	1.4	-11.4	6.0%	-31.5%
Accommodation and Food Services	172.3	166.5	198.5	5.8	-26.2	3.5%	-13.2%
Accommodation	16.7	15.9	25.6	0.8	-8.9	5.0%	-34.8%
Food Services and Drinking Places	155.6	150.6	172.9	5.0	-17.3	3.3%	-10.0%
<b>Other Services (except Public Administration)</b>	<b>73.0</b>	<b>72.1</b>	<b>71.8</b>	<b>0.9</b>	<b>1.2</b>	<b>1.2%</b>	<b>1.7%</b>
<b>Government</b>	<b>249.0</b>	<b>248.9</b>	<b>254.0</b>	<b>0.1</b>	<b>-5.0</b>	<b>0.0%</b>	<b>-2.0%</b>
Federal Government	24.4	26.2	23.5	-1.8	0.9	-6.9%	3.8%
State Government	56.3	55.9	54.2	0.4	2.1	0.7%	3.9%
State Government Education	29.7	29.2	27.7	0.5	2.0	1.7%	7.2%
Local Government	168.3	166.8	176.3	1.5	-8.0	0.9%	-4.5%
Local Government Education	91.3	90.4	97.0	0.9	-5.7	1.0%	-5.9%

Note: 1) Phoenix-Mesa-Scottsdale Metropolitan Area includes Maricopa and Pinal counties. For other notes and source, see end of Table 2



Table 2 (Cont.)

## Nonfarm Payroll Employment

(in Thousands, Not Seasonally Adjusted)

TUCSON MSA <sup>3</sup>				Amount Change		Percent Change	
	October 2020(b)	September 2020(c)	October 2019(c)	Monthly	Over-Year	Monthly	Over-Year
				September '20 - October '20	October '19 - October '20	September '20 - October '20	October '19 - October '20
<b>Total Nonfarm Payroll Employment<sup>(c,d)</sup></b>	<b>379.5</b>	<b>374.9</b>	<b>392.8</b>	<b>4.6</b>	<b>-13.3</b>	<b>1.2%</b>	<b>-3.4%</b>
Private Sector	300.4	295.9	310.6	4.5	-10.2	1.5%	-3.3%
Government	79.1	79.0	82.2	0.1	-3.1	0.1%	-3.8%
<b>Goods-Producing Industries</b>	<b>46.7</b>	<b>46.2</b>	<b>48.2</b>	<b>0.5</b>	<b>-1.5</b>	<b>1.1%</b>	<b>-3.1%</b>
<b>Manufacturing</b>	<b>26.4</b>	<b>26.3</b>	<b>28.0</b>	<b>0.1</b>	<b>-1.6</b>	<b>0.4%</b>	<b>-5.7%</b>
Aerospace Products and Parts	14.2	14.4	13.8	-0.2	0.4	-1.4%	2.9%
<b>Natural Resources and Mining</b>	<b>1.8</b>	<b>1.8</b>	<b>2.0</b>	<b>0.0</b>	<b>-0.2</b>	<b>0.0%</b>	<b>-10.0%</b>
<b>Construction</b>	<b>18.5</b>	<b>18.1</b>	<b>18.2</b>	<b>0.4</b>	<b>0.3</b>	<b>2.2%</b>	<b>1.6%</b>
Specialty Trades	14.6	14.4	13.5	0.2	1.1	1.4%	8.1%
<b>Service-Providing Industries</b>	<b>332.8</b>	<b>328.7</b>	<b>344.6</b>	<b>4.1</b>	<b>-11.8</b>	<b>1.2%</b>	<b>-3.4%</b>
<b>Private Service Providing</b>	<b>253.7</b>	<b>249.7</b>	<b>262.4</b>	<b>4.0</b>	<b>-8.7</b>	<b>1.6%</b>	<b>-3.3%</b>
<b>Trade, Transportation and Utilities</b>	<b>66.8</b>	<b>65.3</b>	<b>62.7</b>	<b>1.5</b>	<b>4.1</b>	<b>2.3%</b>	<b>6.5%</b>
Trade	50.9	50.1	48.4	0.8	2.5	1.6%	5.2%
Wholesale Trade	7.0	7.1	7.4	-0.1	-0.4	-1.4%	-5.4%
Retail Trade	43.9	43.0	41.0	0.9	2.9	2.1%	7.1%
General Merchandise	9.4	9.3	8.6	0.1	0.8	1.1%	9.3%
Department Stores	3.4	3.4	3.5	0.0	-0.1	0.0%	-2.9%
Other General Merchandise	6.0	5.9	5.1	0.1	0.9	1.7%	17.6%
Food and Beverage Stores	9.4	9.3	8.9	0.1	0.5	1.1%	5.6%
Transportation, Warehousing and Utilities	15.9	15.2	14.3	0.7	1.6	4.6%	11.2%
<b>Information</b>	<b>4.1</b>	<b>4.1</b>	<b>5.4</b>	<b>0.0</b>	<b>-1.3</b>	<b>0.0%</b>	<b>-24.1%</b>
<b>Financial Activities</b>	<b>15.9</b>	<b>16.0</b>	<b>17.4</b>	<b>-0.1</b>	<b>-1.5</b>	<b>-0.6%</b>	<b>-8.6%</b>
<b>Professional and Business Services</b>	<b>46.6</b>	<b>45.8</b>	<b>49.7</b>	<b>0.8</b>	<b>-3.1</b>	<b>1.7%</b>	<b>-6.2%</b>
Professional, Scientific and Technical Services	18.4	18.0	18.4	0.4	0.0	2.2%	0.0%
Administrative and Waste Services	27.7	27.1	30.1	0.6	-2.4	2.2%	-8.0%
Employment Services	10.3	9.8	11.4	0.5	-1.1	5.1%	-9.6%
Business Support Services	8.3	8.1	9.2	0.2	-0.9	2.5%	-9.8%
<b>Education and Health Services</b>	<b>66.6</b>	<b>65.9</b>	<b>69.0</b>	<b>0.7</b>	<b>-2.4</b>	<b>1.1%</b>	<b>-3.5%</b>
Health Care	50.8	50.6	51.1	0.2	-0.3	0.4%	-0.6%
Ambulatory Health Care Services	23.5	23.2	23.1	0.3	0.4	1.3%	1.7%
Hospitals	17.0	17.0	17.2	0.0	-0.2	0.0%	-1.2%
Nursing and Residential Care Facilities	10.3	10.4	10.8	-0.1	-0.5	-1.0%	-4.6%
<b>Leisure and Hospitality</b>	<b>40.2</b>	<b>39.2</b>	<b>44.4</b>	<b>1.0</b>	<b>-4.2</b>	<b>2.6%</b>	<b>-9.5%</b>
Accommodations and Food Services	35.8	35.4	39.3	0.4	-3.5	1.1%	-8.9%
Accommodations	5.5	5.2	7.1	0.3	-1.6	5.8%	-22.5%
Food Services and Drinking Places	30.3	30.2	32.2	0.1	-1.9	0.3%	-5.9%
<b>Other Services (except Public Administration)</b>	<b>13.5</b>	<b>13.4</b>	<b>13.8</b>	<b>0.1</b>	<b>-0.3</b>	<b>0.7%</b>	<b>-2.2%</b>
<b>Government</b>	<b>79.1</b>	<b>79.0</b>	<b>82.2</b>	<b>0.1</b>	<b>-3.1</b>	<b>0.1%</b>	<b>-3.8%</b>
Federal Government	13.2	13.6	13.0	-0.4	0.2	-2.9%	1.5%
State Government	25.3	25.1	27.6	0.2	-2.3	0.8%	-8.3%
State Government Education	20.4	20.2	23.0	0.2	-2.6	1.0%	-11.3%
Local Government	40.6	40.3	41.6	0.3	-1.0	0.7%	-2.4%
Local Government Education	22.6	22.3	22.2	0.3	0.4	1.3%	1.8%

**Note:** 3) Tucson Metropolitan Area includes all of Pima County. For other notes and source, see end of Table 2.

Table 2 (Cont.)

## Nonfarm Payroll Employment

(in Thousands, Not Seasonally Adjusted)

YUMA MSA <sup>4</sup>	October 2020(b)	September 2020(c)	October 2019(c)	Amount Change		Percent Change	
				Monthly	Over-Year	Monthly	Over-Year
				September '20 - October '20	October '19 - October '20	September '20 - October '20	October '19 - October '20
<b>Total Nonfarm Payroll Employment<sup>(c,d)</sup></b>	<b>54.5</b>	<b>53.8</b>	<b>56.9</b>	<b>0.7</b>	<b>-2.4</b>	<b>1.3%</b>	<b>-4.2%</b>
Private Sector	40.1	39.3	41.9	0.8	-1.8	2.0%	-4.3%
Government	14.4	14.5	15.0	-0.1	-0.6	-0.7%	-4.0%
<b>Goods-Producing Industries</b>	<b>5.2</b>	<b>5.0</b>	<b>5.4</b>	<b>0.2</b>	<b>-0.2</b>	<b>4.0%</b>	<b>-3.7%</b>
Manufacturing	2.7	2.6	2.3	0.1	0.4	3.8%	17.4%
Natural Resources and Construction	2.5	2.4	3.1	0.1	-0.6	4.2%	-19.4%
Service-Providing Industries	49.3	48.8	51.5	0.5	-2.2	1.0%	-4.3%
Private Service Providing	34.9	34.3	36.5	0.6	-1.6	1.7%	-4.4%
Trade, Transportation and Utilities	11.8	11.8	11.4	0.0	0.4	0.0%	3.5%
Information	0.4	0.4	0.4	0.0	0.0	0.0%	0.0%
Financial Activities	2.1	2.1	2.1	0.0	0.0	0.0%	0.0%
Professional and Business Services	5.8	5.6	6.2	0.2	-0.4	3.6%	-6.5%
Education and Health Services	7.5	7.5	8.4	0.0	-0.9	0.0%	-10.7%
Leisure and Hospitality	5.5	5.1	6.3	0.4	-0.8	7.8%	-12.7%
Other Services (except Public Administration)	1.8	1.8	1.7	0.0	0.1	0.0%	5.9%
<b>Government</b>	<b>14.4</b>	<b>14.5</b>	<b>15.0</b>	<b>-0.1</b>	<b>-0.6</b>	<b>-0.7%</b>	<b>-4.0%</b>
Federal Government	3.8	3.9	3.7	-0.1	0.1	-2.6%	2.7%
State and Local Government	10.6	10.6	11.3	0.0	-0.7	0.0%	-6.2%

Note: 4) Yuma Metropolitan Area includes all of Yuma County. For other notes and source, see end of Table 2

FLAGSTAFF MSA <sup>5</sup>	October 2020(b)	September 2020(c)	October 2019(c)	Amount Change		Percent Change	
				Monthly	Over-Year	Monthly	Over-Year
				September '20 - October '20	October '19 - October '20	September '20 - October '20	October '19 - October '20
<b>Total Nonfarm Payroll Employment<sup>(c,d)</sup></b>	<b>58.4</b>	<b>57.8</b>	<b>70.0</b>	<b>0.6</b>	<b>-11.6</b>	<b>1.0%</b>	<b>-16.6%</b>
Private Sector	40.2	39.4	49.3	0.8	-9.1	2.0%	-18.5%
Government	18.2	18.4	20.7	-0.2	-2.5	-1.1%	-12.1%
<b>Goods-Producing Industries</b>	<b>6.2</b>	<b>6.0</b>	<b>6.6</b>	<b>0.2</b>	<b>-0.4</b>	<b>3.3%</b>	<b>-6.1%</b>
Manufacturing	3.8	3.7	3.9	0.1	-0.1	2.7%	-2.6%
Natural Resources and Construction	2.4	2.3	2.7	0.1	-0.3	4.3%	-11.1%
Service-Providing Industries	52.2	51.8	63.4	0.4	-11.2	0.8%	-17.7%
Private Service Providing	34.0	33.4	42.7	0.6	-8.7	1.8%	-20.4%
Trade, Transportation and Utilities	9.5	9.5	9.6	0.0	-0.1	0.0%	-1.0%
Information	0.4	0.4	0.4	0.0	0.0	0.0%	0.0%
Financial Activities	1.5	1.5	1.5	0.0	0.0	0.0%	0.0%
Professional and Business Services	3.5	3.5	3.5	0.0	0.0	0.0%	0.0%
Education and Health Services	8.9	8.8	9.6	0.1	-0.7	1.1%	-7.3%
Leisure and Hospitality	8.7	8.3	16.3	0.4	-7.6	4.8%	-46.6%
Other Services (except Public Administration)	1.5	1.4	1.8	0.1	-0.3	7.1%	-16.7%
<b>Government</b>	<b>18.2</b>	<b>18.4</b>	<b>20.7</b>	<b>-0.2</b>	<b>-2.5</b>	<b>-1.1%</b>	<b>-12.1%</b>
Federal Government	2.7	2.9	2.7	-0.2	0.0	-6.9%	0.0%
State and Local Government	15.5	15.5	18.0	0.0	-2.5	0.0%	-13.9%

Notes: 5) Flagstaff Metropolitan Area includes all of Coconino County. For other notes and source, see end of Table 2

Table 2 (Cont.)

## Nonfarm Payroll Employment

(in Thousands, Not Seasonally Adjusted)

PRESCOTT MSA <sup>6</sup>	October 2020(b)	September 2020(c)	October 2019(c)	Amount Change		Percent Change	
				Monthly	Over-Year	Monthly	Over-Year
				September '20 - October '20	October '19 - October '20	September '20 - October '20	October '19 - October '20
<b>Total Nonfarm Payroll Employment<sup>(c,d)</sup></b>	<b>66.2</b>	<b>65.8</b>	<b>66.4</b>	<b>0.4</b>	<b>-0.2</b>	<b>0.6%</b>	<b>-0.3%</b>
Private Sector	55.2	54.6	55.3	0.6	-0.1	1.1%	-0.2%
Government	11.0	11.2	11.1	-0.2	-0.1	-1.8%	-0.9%
<b>Goods-Producing Industries</b>	<b>10.5</b>	<b>10.4</b>	<b>10.1</b>	<b>0.1</b>	<b>0.4</b>	<b>1.0%</b>	<b>4.0%</b>
Manufacturing	3.7	3.7	3.7	0.0	0.0	0.0%	0.0%
Natural Resources and Construction	6.8	6.7	6.4	0.1	0.4	1.5%	6.3%
<b>Service-Providing Industries</b>	<b>55.7</b>	<b>55.4</b>	<b>56.3</b>	<b>0.3</b>	<b>-0.6</b>	<b>0.5%</b>	<b>-1.1%</b>
Private Service Providing	44.7	44.2	45.2	0.5	-0.5	1.1%	-1.1%
Trade, Transportation and Utilities	12.6	12.4	12.8	0.2	-0.2	1.6%	-1.6%
Information	0.5	0.5	0.5	0.0	0.0	0.0%	0.0%
Financial Activities	2.1	2.1	2.1	0.0	0.0	0.0%	0.0%
Professional and Business Services	4.3	4.2	4.3	0.1	0.0	2.4%	0.0%
Education and Health Services	12.7	12.6	12.4	0.1	0.3	0.8%	2.4%
Leisure and Hospitality	10.3	10.2	10.7	0.1	-0.4	1.0%	-3.7%
Other Services (except Public Administration)	2.2	2.2	2.4	0.0	-0.2	0.0%	-8.3%
<b>Government</b>	<b>11.0</b>	<b>11.2</b>	<b>11.1</b>	<b>-0.2</b>	<b>-0.1</b>	<b>-1.8%</b>	<b>-0.9%</b>
Federal Government	1.7	1.9	1.5	-0.2	0.2	-10.5%	13.3%
State and Local Government	9.3	9.3	9.6	0.0	-0.3	0.0%	-3.1%

Note: 6) Prescott Metropolitan Area includes all of Yavapai County. For other notes and source, see end of Table 2

LAKE HAVASU CITY-KINGMAN MSA <sup>7</sup>	October 2020(b)	September 2020(c)	October 2019(c)	Amount Change		Percent Change	
				Monthly	Over-Year	Monthly	Over-Year
				September '20 - October '20	October '19 - October '20	September '20 - October '20	October '19 - October '20
<b>Total Nonfarm Payroll Employment<sup>(c,d)</sup></b>	<b>51.2</b>	<b>50.3</b>	<b>52.7</b>	<b>0.9</b>	<b>-1.5</b>	<b>1.8%</b>	<b>-2.8%</b>
Private Sector	43.3	42.2	44.2	1.1	-0.9	2.6%	-2.0%
Government	7.9	8.1	8.5	-0.2	-0.6	-2.5%	-7.1%
<b>Goods-Producing Industries</b>	<b>6.7</b>	<b>6.6</b>	<b>6.6</b>	<b>0.1</b>	<b>0.1</b>	<b>1.5%</b>	<b>1.5%</b>
Manufacturing	3.0	3.0	3.1	0.0	-0.1	0.0%	-3.2%
Natural Resources and Construction	3.7	3.6	3.5	0.1	0.2	2.8%	5.7%
<b>Service-Providing Industries</b>	<b>44.5</b>	<b>43.7</b>	<b>46.1</b>	<b>0.8</b>	<b>-1.6</b>	<b>1.8%</b>	<b>-3.5%</b>
Private Service Providing	36.6	35.6	37.6	1.0	-1.0	2.8%	-2.7%
Trade, Transportation and Utilities	13.7	13.4	12.7	0.3	1.0	2.2%	7.9%
Information	0.4	0.5	0.5	-0.1	-0.1	-20.0%	-20.0%
Financial Activities	1.9	1.8	1.8	0.1	0.1	5.6%	5.6%
Professional and Business Services	4.8	4.6	4.0	0.2	0.8	4.3%	20.0%
Education and Health Services	8.8	8.7	9.2	0.1	-0.4	1.1%	-4.3%
Leisure and Hospitality	5.2	4.9	7.5	0.3	-2.3	6.1%	-30.7%
Other Services (except Public Administration)	1.8	1.7	1.9	0.1	-0.1	5.9%	-5.3%
<b>Government</b>	<b>7.9</b>	<b>8.1</b>	<b>8.5</b>	<b>-0.2</b>	<b>-0.6</b>	<b>-2.5%</b>	<b>-7.1%</b>
Federal Government	0.5	0.7	0.5	-0.2	0.0	-28.6%	0.0%
State and Local Government	7.4	7.4	8.0	0.0	-0.6	0.0%	-7.5%

Note: 7) Lake Havasu City-Kingman Metropolitan Area includes all of Mohave County  
For other notes and source, see next page

Table 2 (Cont.)

## Nonfarm Payroll Employment

(in Thousands, Not Seasonally Adjusted)

**SIERRA VISTA-DOUGLAS MSA<sup>8</sup>**

				Amount Change		Percent Change	
	October 2020(b)	September 2020(c)	October 2019(c)	Monthly	Over-Year	Monthly	Over-Year
				September '20 - October '20	October '19 - October '20	September '20 - October '20	October '19 - October '20
<b>Total Nonfarm Payroll Employment<sup>(c,d)</sup></b>	<b>34.7</b>	<b>34.4</b>	<b>34.4</b>	<b>0.3</b>	<b>0.3</b>	<b>0.9%</b>	<b>0.9%</b>
Private Sector	23.9	23.5	23.2	0.4	0.7	1.7%	3.0%
Government	10.8	10.9	11.2	-0.1	-0.4	-0.9%	-3.6%
<b>Goods-Producing Industries</b>	<b>2.7</b>	<b>2.7</b>	<b>2.5</b>	<b>0.0</b>	<b>0.2</b>	<b>0.0%</b>	<b>8.0%</b>
Manufacturing	0.6	0.6	0.6	0.0	0.0	0.0%	0.0%
Natural Resources and Construction	2.1	2.1	1.9	0.0	0.2	0.0%	10.5%
<b>Service-Providing Industries</b>	<b>32.0</b>	<b>31.7</b>	<b>31.9</b>	<b>0.3</b>	<b>0.1</b>	<b>0.9%</b>	<b>0.3%</b>
Private Service Providing	21.2	20.8	20.7	0.4	0.5	1.9%	2.4%
Trade, Transportation and Utilities	6.8	6.6	5.8	0.2	1.0	3.0%	17.2%
Information	0.3	0.3	0.4	0.0	-0.1	0.0%	-25.0%
Financial Activities	0.8	0.8	0.8	0.0	0.0	0.0%	0.0%
Professional and Business Services	5.3	5.2	4.7	0.1	0.6	1.9%	12.8%
Education and Health Services	4.1	4.0	4.6	0.1	-0.5	2.5%	-10.9%
Leisure and Hospitality	3.3	3.3	3.7	0.0	-0.4	0.0%	-10.8%
Other Services (except Public Administration)	0.6	0.6	0.7	0.0	-0.1	0.0%	-14.3%
<b>Government</b>	<b>10.8</b>	<b>10.9</b>	<b>11.2</b>	<b>-0.1</b>	<b>-0.4</b>	<b>-0.9%</b>	<b>-3.6%</b>
Federal Government	4.8	5.0	4.8	-0.2	0.0	-4.0%	0.0%
State and Local Government	6.0	5.9	6.4	0.1	-0.4	1.7%	-6.3%

**Note:** 8) Sierra Vista Douglas Metropolitan Area includes all of Cochise County  
For other notes and source, see next page)

**Other notes and sources:**

- a) Nonfarm employment at the state and substate level is produced from the monthly establishment survey by the Current Employment Statistics (CES) program of the Arizona Office of Employment and Population Statistics, in cooperation with U.S. Dept. of Labor, Bureau of Labor Statistics.

For more information on the establishment survey, see: <http://www.bls.gov/bls/empstquickguide.htm>

- b) Preliminary and subject to revision the following month  
c) Revised  
d) By place of work; does not include agricultural workers, self-employed, unpaid family members, and domestic workers  
e) Detail may not add up exactly due to rounding  
MSA — Metropolitan Statistical Area  
NA — Not Available

Source: Prepared by the Arizona Office of Economic Opportunity, in cooperation with the U.S. Dept. of Labor, Bureau of Labor Statistics

Labor Force

Prepared in Cooperation with the U.S. Department of Labor, Bureau of Labor Statistics

Arizona Office of Economic Opportunity

2020

Apache County

	JAN	FEB	MAR	APR	MAY	JUN	JUL	AUG	SEP	OCT	NOV	DEC	AVG
Civilian Labor Force	20,785	20,710	21,128	20,086	19,607	19,679	19,506	19,202	20,199	20,064			
Employment	18,490	18,588	18,198	16,923	17,415	16,476	15,976	17,220	17,983	17,523			
Unemployment	2,295	2,122	2,930	3,163	2,192	3,203	3,530	1,982	2,216	2,541			
Unemployment rate	11.0	10.2	13.9	15.7	11.2	16.3	18.1	10.3	11.0	12.7			

Adjusted to the Current Population Survey (CPS 2020) to reflect place of residence

Equal Opportunity Employer/ Program available in alternative format/ reasonable accommodations: 602-771-1110, TDD 1-800-367-8939

Labor Force

Prepared in Cooperation with the U.S. Department of Labor, Bureau of Labor Statistics

Arizona Office of Economic Opportunity

2020

Cochise County(Sierra-Vista Douglas MSA)

	JAN	FEB	MAR	APR	MAY	JUN	JUL	AUG	SEP	OCT	NOV	DEC	AVG
Civilian Labor Force	51,901	52,169	52,093	50,443	51,250	50,825	51,701	50,003	52,305	52,183			
Employment	48,897	49,345	48,245	44,850	47,570	46,355	46,865	47,374	49,408	48,756			
Unemployment	3,004	2,824	3,848	5,593	3,680	4,470	4,836	2,629	2,897	3,427			
Unemployment rate	5.8	5.4	7.4	11.1	7.2	8.8	9.4	5.3	5.5	6.6			

Adjusted to the Current Population Survey (CPS 2020) to reflect place of residence

Equal Opportunity Employer/ Program available in alternative format/ reasonable accommodations: 602-771-1110, TDD 1-800-367-8939

Labor Force

Prepared in Cooperation with the U.S. Department of Labor, Bureau of Labor Statistics

Arizona Office of Economic Opportunity

2020

Coconino County(Flagstaff MSA)

	JAN	FEB	MAR	APR	MAY	JUN	JUL	AUG	SEP	OCT	NOV	DEC	AVG
Civilian Labor Force	77,687	77,685	77,165	71,690	70,186	70,331	70,061	66,826	69,962	70,110			
Employment	72,788	73,191	70,937	59,231	61,948	60,945	60,444	61,553	64,251	63,315			
Unemployment	4,899	4,494	6,228	12,459	8,238	9,386	9,617	5,273	5,711	6,795			
Unemployment rate	6.3	5.8	8.1	17.4	11.7	13.3	13.7	7.9	8.2	9.7			

Adjusted to the Current Population Survey (CPS 2020) to reflect place of residence

Equal Opportunity Employer/ Program available in alternative format/ reasonable accommodations: 602-771-1110, TDD 1-800-367-8939

Labor Force

Prepared in Cooperation with the U.S. Department of Labor, Bureau of Labor Statistics

Arizona Office of Economic Opportunity

2020

Gila County

	JAN	FEB	MAR	APR	MAY	JUN	JUL	AUG	SEP	OCT	NOV	DEC	AVG
Civilian Labor Force	21,565	21,577	21,547	21,205	20,990	20,675	20,609	20,120	21,150	20,992			
Employment	20,325	20,418	19,937	18,722	19,408	18,765	18,465	18,928	19,817	19,379			
Unemployment	1,240	1,159	1,610	2,483	1,582	1,910	2,144	1,192	1,333	1,613			
Unemployment rate	5.8	5.4	7.5	11.7	7.5	9.2	10.4	5.9	6.3	7.7			

Adjusted to the Current Population Survey (CPS 2020) to reflect place of residence

Equal Opportunity Employer/ Program available in alternative format/ reasonable accommodations: 602-771-1110, TDD 1-800-367-8939

Labor Force

Prepared in Cooperation with the U.S. Department of Labor, Bureau of Labor Statistics

Arizona Office of Economic Opportunity

2020

Graham County

	JAN	FEB	MAR	APR	MAY	JUN	JUL	AUG	SEP	OCT	NOV	DEC	AVG
Civilian Labor Force	15,417	15,909	15,865	15,390	15,510	14,916	14,490	14,529	15,848	15,790			
Employment	14,640	15,152	14,825	14,210	14,580	13,591	13,043	13,762	14,998	14,794			
Unemployment	777	757	1,040	1,180	930	1,325	1,447	767	850	996			
Unemployment rate	5.0	4.8	6.6	7.7	6.0	8.9	10.0	5.3	5.4	6.3			

Adjusted to the Current Population Survey (CPS 2020) to reflect place of residence

Equal Opportunity Employer/ Program available in alternative format/ reasonable accommodations: 602-771-1110, TDD 1-800-367-8939

Labor Force

Prepared in Cooperation with the U.S. Department of Labor, Bureau of Labor Statistics

Arizona Office of Economic Opportunity

2020

Greenlee County

	JAN	FEB	MAR	APR	MAY	JUN	JUL	AUG	SEP	OCT	NOV	DEC	AVG
Civilian Labor Force	4,585	4,628	4,578	4,560	4,578	4,625	4,666	4,471	4,631	4,655			
Employment	4,413	4,458	4,339	4,315	4,386	4,296	4,288	4,264	4,407	4,372			
Unemployment	172	170	239	245	192	329	378	207	224	283			
Unemployment rate	3.8	3.7	5.2	5.4	4.2	7.1	8.1	4.6	4.8	6.1			

Adjusted to the Current Population Survey (CPS 2020) to reflect place of residence

Equal Opportunity Employer/ Program available in alternative format/ reasonable accommodations: 602-771-1110, TDD 1-800-367-8939

Labor Force

Prepared in Cooperation with the U.S. Department of Labor, Bureau of Labor Statistics

Arizona Office of Economic Opportunity

2020

La Paz County

	JAN	FEB	MAR	APR	MAY	JUN	JUL	AUG	SEP	OCT	NOV	DEC	AVG
Civilian Labor Force	9,751	9,774	9,978	9,072	8,799	8,750	8,711	8,748	9,601	9,868			
Employment	9,168	9,224	9,215	8,288	8,269	8,051	7,924	8,244	9,016	9,216			
Unemployment	583	550	763	784	530	699	787	504	585	652			
Unemployment rate	6.0	5.6	7.6	8.6	6.0	8.0	9.0	5.8	6.1	6.6			

Adjusted to the Current Population Survey (CPS 2020) to reflect place of residence

Equal Opportunity Employer/ Program available in alternative format/ reasonable accommodations: 602-771-1110, TDD 1-800-367-8939

Labor Force

Prepared in Cooperation with the U.S. Department of Labor, Bureau of Labor Statistics

Arizona Office of Economic Opportunity

2020

Maricopa County

	JAN	FEB	MAR	APR	MAY	JUN	JUL	AUG	SEP	OCT	NOV	DEC	AVG
Civilian Labor Force	2,360,096	2,373,098	2,334,396	2,307,896	2,315,974	2,296,480	2,332,989	2,232,850	2,349,862	2,356,405			
Employment	2,266,177	2,283,286	2,209,663	2,019,432	2,123,837	2,072,534	2,090,853	2,101,917	2,205,048	2,179,116			
Unemployment	93,919	89,812	124,733	288,464	192,137	223,946	242,136	130,933	144,814	177,289			
Unemployment rate	4.0	3.8	5.3	12.5	8.3	9.8	10.4	5.9	6.2	7.5			

Adjusted to the Current Population Survey (CPS 2020) to reflect place of residence

Equal Opportunity Employer/ Program available in alternative format/ reasonable accommodations: 602-771-1110, TDD 1-800-367-8939



Labor Force

Prepared in Cooperation with the U.S. Department of Labor, Bureau of Labor Statistics

Arizona Office of Economic Opportunity

2020

Mohave County(Lake Havasu City-Kingman MSA)

	JAN	FEB	MAR	APR	MAY	JUN	JUL	AUG	SEP	OCT	NOV	DEC	AVG
Civilian Labor Force	89,027	89,571	88,261	86,810	88,464	86,439	87,932	83,356	87,378	87,420			
Employment	83,775	84,668	81,466	70,023	76,387	75,455	76,805	77,148	80,500	79,504			
Unemployment	5,252	4,903	6,795	16,787	12,077	10,984	11,127	6,208	6,878	7,916			
Unemployment rate	5.9	5.5	7.7	19.3	13.7	12.7	12.7	7.4	7.9	9.1			

Adjusted to the Current Population Survey (CPS 2020) to reflect place of residence

Equal Opportunity Employer/ Program available in alternative format/ reasonable accommodations: 602-771-1110, TDD 1-800-367-8939

Labor Force

Prepared in Cooperation with the U.S. Department of Labor, Bureau of Labor Statistics

Arizona Office of Economic Opportunity

2020

Navajo County

	JAN	FEB	MAR	APR	MAY	JUN	JUL	AUG	SEP	OCT	NOV	DEC	AVG
Civilian Labor Force	40,989	40,941	41,510	40,177	39,771	39,757	40,011	39,254	41,229	40,773			
Employment	37,667	37,833	37,205	34,421	35,931	34,625	34,486	36,114	37,795	36,854			
Unemployment	3,322	3,108	4,305	5,756	3,840	5,132	5,525	3,140	3,434	3,919			
Unemployment rate	8.1	7.6	10.4	14.3	9.7	12.9	13.8	8.0	8.3	9.6			

Adjusted to the Current Population Survey (CPS 2020) to reflect place of residence

Equal Opportunity Employer/ Program available in alternative format/ reasonable accommodations: 602-771-1110, TDD 1-800-367-8939

Labor Force

Prepared in Cooperation with the U.S. Department of Labor, Bureau of Labor Statistics

Arizona Office of Economic Opportunity

2020

Pima County(Tucson MSA)

	JAN	FEB	MAR	APR	MAY	JUN	JUL	AUG	SEP	OCT	NOV	DEC	AVG
Civilian Labor Force	504,206	507,744	500,658	497,905	502,124	496,222	500,705	476,987	499,135	499,137			
Employment	481,622	486,239	470,843	434,363	460,027	447,038	447,530	448,777	467,605	459,711			
Unemployment	22,584	21,505	29,815	63,542	42,097	49,184	53,175	28,210	31,530	39,426			
Unemployment rate	4.5	4.2	6.0	12.8	8.4	9.9	10.6	5.9	6.3	7.9			

Adjusted to the Current Population Survey (CPS 2020) to reflect place of residence

Equal Opportunity Employer/ Program available in alternative format/ reasonable accommodations: 602-771-1110, TDD 1-800-367-8939

Labor Force

Prepared in Cooperation with the U.S. Department of Labor, Bureau of Labor Statistics

Arizona Office of Economic Opportunity

2020

Pinal County

	JAN	FEB	MAR	APR	MAY	JUN	JUL	AUG	SEP	OCT	NOV	DEC	AVG
Civilian Labor Force	192,010	192,715	191,117	183,683	183,657	182,956	185,915	178,529	189,584	191,227			
Employment	182,584	183,746	178,628	161,617	168,733	164,821	166,103	167,939	177,638	176,779			
Unemployment	9,426	8,969	12,489	22,066	14,924	18,135	19,812	10,590	11,946	14,448			
Unemployment rate	4.9	4.7	6.5	12.0	8.1	9.9	10.7	5.9	6.3	7.6			

Adjusted to the Current Population Survey (CPS 2020) to reflect place of residence

Equal Opportunity Employer/ Program available in alternative format/ reasonable accommodations: 602-771-1110, TDD 1-800-367-8939

Labor Force

Prepared in Cooperation with the U.S. Department of Labor, Bureau of Labor Statistics

Arizona Office of Economic Opportunity

2020

Santa Cruz County

	JAN	FEB	MAR	APR	MAY	JUN	JUL	AUG	SEP	OCT	NOV	DEC	AVG
Civilian Labor Force	20,067	19,873	20,149	19,320	18,821	18,760	18,517	18,104	19,099	19,302			
Employment	18,466	18,442	18,038	16,248	16,788	16,215	15,509	16,226	16,964	16,800			
Unemployment	1,601	1,431	2,111	3,072	2,033	2,545	3,008	1,878	2,135	2,502			
Unemployment rate	8.0	7.2	10.5	15.9	10.8	13.6	16.2	10.4	11.2	13.0			

Adjusted to the Current Population Survey (CPS 2020) to reflect place of residence

Equal Opportunity Employer/ Program available in alternative format/ reasonable accommodations: 602-771-1110, TDD 1-800-367-8939

Labor Force

Prepared in Cooperation with the U.S. Department of Labor, Bureau of Labor Statistics

Arizona Office of Economic Opportunity

2020

Yavapai County(Prescott MSA)

	JAN	FEB	MAR	APR	MAY	JUN	JUL	AUG	SEP	OCT	NOV	DEC	AVG
Civilian Labor Force	107,379	108,048	106,535	109,749	109,444	108,470	109,601	105,732	109,981	109,113			
Employment	102,552	103,465	100,271	94,226	100,165	98,460	99,063	100,062	103,834	101,560			
Unemployment	4,827	4,583	6,264	15,523	9,279	10,010	10,538	5,670	6,147	7,553			
Unemployment rate	4.5	4.2	5.9	14.1	8.5	9.2	9.6	5.4	5.6	6.9			

Adjusted to the Current Population Survey (CPS 2020) to reflect place of residence

Equal Opportunity Employer/ Program available in alternative format/ reasonable accommodations: 602-771-1110, TDD 1-800-367-8939

Labor Force

Prepared in Cooperation with the U.S. Department of Labor, Bureau of Labor Statistics

Arizona Office of Economic Opportunity

2020

Yuma County(Yuma MSA)

	JAN	FEB	MAR	APR	MAY	JUN	JUL	AUG	SEP	OCT	NOV	DEC	AVG
Civilian Labor Force	100,806	98,881	103,472	96,910	92,032	92,547	97,783	90,264	97,429	97,528			
Employment	87,020	87,010	86,192	73,904	75,299	72,198	73,194	75,416	81,170	82,287			
Unemployment	13,786	11,871	17,280	23,006	16,733	20,349	24,589	14,848	16,259	15,241			
Unemployment rate	13.7	12.0	16.7	23.7	18.2	22.0	25.1	16.4	16.7	15.6			

Adjusted to the Current Population Survey (CPS 2020) to reflect place of residence

Equal Opportunity Employer/ Program available in alternative format/ reasonable accommodations: 602-771-1110, TDD 1-800-367-8939

### Nonfarm Employment

Prepared in Cooperation with the U.S. Department of Labor, Bureau of Labor Statistics

Arizona Office of Economic Opportunity

2020

## Apache County

	JAN	FEB	MAR	APR	MAY	JUN	JUL	AUG	SEP	OCT	NOV	DEC	AVG
Total Nonfarm	17,900	18,000	18,025	16,875	16,800	16,375	15,600	17,175	17,175	17,075			
Total Private	7,325	7,375	7,425	6,625	6,650	6,700	6,625	6,725	6,725	6,700			
Goods Producing	550	575	600	375	375	375	375	400	400	425			
Service-Providing	17,350	17,425	17,425	16,500	16,425	16,000	15,225	16,775	16,775	16,650			
Private Service-Providing	6,775	6,800	6,825	6,250	6,275	6,325	6,250	6,325	6,325	6,275			
Trade, Transportation, and Utilities	1,925	1,925	1,950	1,825	1,850	1,875	1,875	1,875	1,850	1,825			
Other Private Service-Providing	4,850	4,875	4,875	4,425	4,425	4,450	4,375	4,450	4,475	4,450			
Government	10,575	10,625	10,600	10,250	10,150	9,675	8,975	10,450	10,450	10,375			
Federal Government	2,525	2,550	2,575	2,525	2,575	2,625	2,475	2,625	2,625	2,550			
State and Local Government	8,050	8,075	8,025	7,725	7,575	7,050	6,500	7,825	7,825	7,825			

Benchmark year 2019, quarter 1, rev. 11/10/2020

Equal Opportunity Employer/ Program available in alternative format/ reasonable accomodations: 602-771-1110, TDD 1-800-367-8939

### Nonfarm Employment

Prepared in Cooperation with the U.S. Department of Labor, Bureau of Labor Statistics

Arizona Office of Economic Opportunity

2020

Cochise County(Sierra-Vista Douglas MSA)

[illegible]

Government	11,300	11,500	11,400	11,200	11,200	10,500	10,300	10,900	10,900	10,800
Federal Government	4,800	4,800	4,900	4,900	5,000	4,900	4,900	5,000	5,000	4,800
State and Local Government	6,500	6,700	6,500	6,300	6,200	5,600	5,400	5,900	5,900	6,000

Benchmark year 2019, quarter 1, rev. 11/10/2020

Equal Opportunity Employer/ Program available in alternative format/ reasonable accommodations: 602-771-1110, TDD 1-800-367-8939

Nonfarm Employment

Prepared in Cooperation with the U.S. Department of Labor, Bureau of Labor Statistics

Arizona Office of Economic Opportunity

2020

Coconino County(Flagstaff MSA)

	JAN	FEB	MAR	APR	MAY	JUN	JUL	AUG	SEP	OCT	NOV	DEC	AVG
Total Nonfarm	67,200	67,600	67,100	55,600	56,300	57,100	55,700	57,700	57,800	58,400			
Total Private	47,000	47,300	46,800	35,600	37,700	38,900	38,600	39,300	39,400	40,200			
Goods Producing	6,100	6,100	6,100	5,600	5,900	6,000	5,900	6,000	6,000	6,200			
Mining and Construction	2,300	2,300	2,300	2,100	2,300	2,300	2,200	2,300	2,300	2,400			
Manufacturing	3,800	3,800	3,800	3,500	3,600	3,700	3,700	3,700	3,700	3,800			
Service-Providing	61,100	61,500	61,000	50,000	50,400	51,100	49,800	51,700	51,800	52,200			
Private Service-Providing	40,900	41,200	40,700	30,000	31,800	32,900	32,700	33,300	33,400	34,000			
Trade, Transportation, and Utilities	9,400	9,400	9,300	8,700	8,500	9,000	9,100	9,500	9,500	9,500			
Information	400	400	400	400	400	400	400	400	400	400			
Financial Activities	1,500	1,500	1,500	1,500	1,500	1,500	1,500	1,500	1,500	1,500			
Professional and Business Services	3,300	3,400	3,500	3,300	3,500	3,600	3,600	3,600	3,500	3,500			
Educational and Health Services	9,600	9,700	9,600	8,800	8,800	8,800	8,700	8,800	8,800	8,900			
Leisure and Hospitality	14,900	15,000	14,600	5,900	7,800	8,200	8,000	8,100	8,300	8,700			
Other Services	1,800	1,800	1,800	1,400	1,300	1,400	1,400	1,400	1,400	1,500			
Government	20,200	20,300	20,300	20,000	18,600	18,200	17,100	18,400	18,400	18,200			
Federal Government	2,400	2,400	2,400	2,600	2,700	2,900	2,600	2,700	2,900	2,700			
State and Local Government	17,800	17,900	17,900	17,400	15,900	15,300	14,500	15,700	15,500	15,500			

Benchmark year 2019, quarter 1, rev. 11/10/2020

Equal Opportunity Employer/ Program available in alternative format/ reasonable accommodations: 602-771-1110, TDD 1-800-367-8939

Nonfarm Employment

Prepared in Cooperation with the U.S. Department of Labor, Bureau of Labor Statistics

Arizona Office of Economic Opportunity

2020

Gila County

	JAN	FEB	MAR	APR	MAY	JUN	JUL	AUG	SEP	OCT	NOV	DEC	AVG
Total Nonfarm	14,775	14,925	14,850	14,125	14,175	14,125	13,700	14,250	14,225	14,200			

Total Private	9,350	9,400	9,400	8,625	8,700	8,800	8,700	8,750	8,725	8,750
Goods Producing	2,875	2,875	2,875	2,800	2,800	2,825	2,825	2,825	2,825	2,825
Service-Providing	11,900	12,050	11,975	11,325	11,375	11,300	10,875	11,425	11,400	11,375
Private Service-Providing	6,475	6,525	6,525	5,825	5,900	5,975	5,875	5,925	5,900	5,925
Trade, Transportation, and Utilities	2,075	2,075	2,075	1,975	2,025	2,025	2,000	2,000	1,975	1,975
Other Private Service-Providing	4,400	4,450	4,450	3,850	3,875	3,950	3,875	3,925	3,925	3,950
Government	5,425	5,525	5,450	5,500	5,475	5,325	5,000	5,500	5,500	5,450
Federal Government	225	250	250	250	250	250	250	275	250	200
State and Local Government	5,200	5,275	5,200	5,250	5,225	5,075	4,750	5,225	5,250	5,250

Benchmark year 2019, quarter 1, rev. 11/10/2020

Equal Opportunity Employer/ Program available in alternative format/ reasonable accommodations: 602-771-1110, TDD 1-800-367-8939

Nonfarm Employment

Prepared in Cooperation with the U.S. Department of Labor, Bureau of Labor Statistics

Arizona Office of Economic Opportunity

2020

Graham County

	JAN	FEB	MAR	APR	MAY	JUN	JUL	AUG	SEP	OCT	NOV	DEC	AVG
Total Nonfarm	9,175	9,500	9,525	9,200	9,125	8,775	8,275	8,900	9,325	9,425			
Total Private	6,425	6,475	6,500	6,225	6,225	6,250	6,225	6,300	6,300	6,375			
Goods Producing	1,875	1,900	1,900	1,850	1,850	1,875	1,900	1,900	1,875	1,925			
Service-Providing	7,300	7,600	7,625	7,350	7,275	6,900	6,375	7,000	7,450	7,500			
Private Service-Providing	4,550	4,575	4,600	4,375	4,375	4,375	4,325	4,400	4,425	4,450			
Trade, Transportation, and Utilities	1,775	1,775	1,775	1,750	1,750	1,775	1,775	1,800	1,775	1,825			
Other Private Service-Providing	2,775	2,800	2,825	2,625	2,625	2,600	2,550	2,600	2,650	2,625			
Government	2,750	3,025	3,025	2,975	2,900	2,525	2,050	2,600	3,025	3,050			
Federal Government	375	375	375	375	375	375	375	400	375	375			
State and Local Government	2,375	2,650	2,650	2,600	2,525	2,150	1,675	2,200	2,650	2,675			

Benchmark year 2019, quarter 1, rev. 11/10/2020

Equal Opportunity Employer/ Program available in alternative format/ reasonable accommodations: 602-771-1110, TDD 1-800-367-8939

Nonfarm Employment

Prepared in Cooperation with the U.S. Department of Labor, Bureau of Labor Statistics

Arizona Office of Economic Opportunity

2020

Greenlee County

	JAN	FEB	MAR	APR	MAY	JUN	JUL	AUG	SEP	OCT	NOV	DEC	AVG
Total Nonfarm	5,225	5,250	5,250	5,250	5,150	5,250	5,150	5,200	5,175	5,200			
Total Private	4,650	4,675	4,675	4,675	4,575	4,675	4,700	4,650	4,575	4,625			

Goods Producing	3,725	3,750	3,750	3,725	3,625	3,725	3,725	3,675	3,625	3,675
Service-Providing	1,500	1,500	1,500	1,525	1,525	1,525	1,425	1,525	1,550	1,525
Private Service-Providing	925	925	925	950	950	950	975	975	950	950
Trade, Transportation, and Utilities	500	500	500	500	500	500	525	525	500	500
Other Private Service-Providing	425	425	425	450	450	450	450	450	450	450
Government	575	575	575	575	575	575	450	550	600	575
Federal Government	25	25	25	25	25	50	25	50	50	25
State and Local Government	550	550	550	550	550	525	425	500	550	550

Benchmark year 2019, quarter 1, rev. 11/10/2020

Equal Opportunity Employer/ Program available in alternative format/ reasonable accommodations: 602-771-1110, TDD 1-800-367-8939

Nonfarm Employment

Prepared in Cooperation with the U.S. Department of Labor, Bureau of Labor Statistics

Arizona Office of Economic Opportunity

2020

La Paz County

	JAN	FEB	MAR	APR	MAY	JUN	JUL	AUG	SEP	OCT	NOV	DEC	AVG
Total Nonfarm	5,800	5,900	5,875	5,700	5,725	5,650	5,525	5,650	5,650	5,675			
Total Private	3,475	3,575	3,575	3,400	3,425	3,375	3,400	3,375	3,350	3,375			
Goods Producing	200	225	225	225	225	200	200	175	175	175			
Service-Providing	5,600	5,675	5,650	5,475	5,500	5,450	5,325	5,475	5,475	5,500			
Private Service-Providing	3,275	3,350	3,350	3,175	3,200	3,175	3,200	3,200	3,175	3,200			
Trade, Transportation, and Utilities	1,675	1,700	1,700	1,650	1,650	1,650	1,650	1,675	1,650	1,675			
Other Private Service-Providing	1,600	1,650	1,650	1,525	1,550	1,525	1,550	1,525	1,525	1,525			
Government	2,325	2,325	2,300	2,300	2,300	2,275	2,125	2,275	2,300	2,300			
Federal Government	375	350	350	350	350	350	350	350	375	350			
State and Local Government	1,950	1,975	1,950	1,950	1,950	1,925	1,775	1,925	1,925	1,950			

Benchmark year 2019, quarter 1, rev. 11/10/2020

Equal Opportunity Employer/ Program available in alternative format/ reasonable accommodations: 602-771-1110, TDD 1-800-367-8939

Nonfarm Employment

Prepared in Cooperation with the U.S. Department of Labor, Bureau of Labor Statistics

Arizona Office of Economic Opportunity

2020

Maricopa County

	JAN	FEB	MAR	APR	MAY	JUN	JUL	AUG	SEP	OCT	NOV	DEC	AVG
Total Nonfarm	2,152,100	2,167,100	2,153,800	1,960,100	1,986,400	2,004,700	1,995,000	2,041,800	2,071,700	2,106,100			
Total Private	1,918,700	1,930,200	1,919,000	1,728,900	1,766,400	1,813,200	1,802,600	1,820,900	1,844,400	1,878,500			
Goods Producing	264,600	266,800	266,400	255,200	255,900	258,600	256,400	257,600	259,800	262,100			



Mining and Construction	135,300	137,600	136,800	134,500	134,000	133,700	132,200	132,900	134,700	136,700
Manufacturing	129,300	129,200	129,600	120,700	121,900	124,900	124,200	124,700	125,100	125,400
Service-Providing	1,887,500	1,900,300	1,887,400	1,704,900	1,730,500	1,746,100	1,738,600	1,784,200	1,811,900	1,844,000
Private Service-Providing	1,654,100	1,663,400	1,652,600	1,473,700	1,510,500	1,554,600	1,546,200	1,563,300	1,584,600	1,616,400
Trade, Transportation, and Utilities	405,900	405,100	407,000	382,300	390,100	398,000	398,600	403,400	407,800	412,400
Information	40,100	40,200	39,800	36,900	37,000	37,400	37,600	38,000	37,700	37,700
Financial Activities	203,000	203,200	200,900	200,200	200,100	202,000	201,300	203,000	203,700	205,600
Professional and Business Services	365,300	364,600	361,000	336,600	333,900	336,400	337,900	340,000	344,700	356,900
Educational and Health Services	342,200	346,200	345,200	315,900	319,000	325,000	326,900	331,300	333,800	339,000
Leisure and Hospitality	228,800	235,600	229,400	141,800	163,300	185,400	173,700	177,000	185,900	192,900
Other Services	68,800	68,500	69,300	60,000	67,100	70,400	70,200	70,600	71,000	71,900
Government	233,400	236,900	234,800	231,200	220,000	191,500	192,400	220,900	227,300	227,600
Federal Government	22,000	21,900	22,200	22,600	22,600	22,500	22,900	25,300	24,800	23,000
State and Local Government	211,400	215,000	212,600	208,600	197,400	169,000	169,500	195,600	202,500	204,600

Benchmark year 2019, quarter 1, rev. 11/10/2020

Equal Opportunity Employer/ Program available in alternative format/ reasonable accomodations: 602-771-1110, TDD 1-800-367-8939

Nonfarm Employment

Prepared in Cooperation with the U.S. Department of Labor, Bureau of Labor Statistics

Arizona Office of Economic Opportunity

2020

Mohave County(Lake Havasu City-Kingman MSA)

	JAN	FEB	MAR	APR	MAY	JUN	JUL	AUG	SEP	OCT	NOV	DEC	AVG
Total Nonfarm	52,600	53,400	52,700	45,700	48,300	48,700	48,900	50,100	50,300	51,200			
Total Private	44,300	44,700	44,500	37,500	40,300	41,100	41,400	42,000	42,200	43,300			
Goods Producing	6,400	6,500	6,500	6,100	6,300	6,500	6,500	6,600	6,600	6,700			
Mining and Construction	3,300	3,400	3,400	3,100	3,400	3,500	3,500	3,600	3,600	3,700			
Manufacturing	3,100	3,100	3,100	3,000	2,900	3,000	3,000	3,000	3,000	3,000			
Service-Providing	46,200	46,900	46,200	39,600	42,000	42,200	42,400	43,500	43,700	44,500			
Private Service-Providing	37,900	38,200	38,000	31,400	34,000	34,600	34,900	35,400	35,600	36,600			
Trade, Transportation, and Utilities	12,800	12,800	12,800	12,100	13,300	13,100	13,200	13,300	13,400	13,700			
Information	500	500	500	500	500	500	500	400	500	400			
Financial Activities	1,800	1,800	1,800	1,800	1,800	1,800	1,800	1,800	1,800	1,900			
Professional and Business Services	4,400	4,500	4,600	3,300	3,800	4,100	4,300	4,600	4,600	4,800			
Educational and Health Services	9,200	9,300	9,000	8,600	8,600	8,500	8,500	8,700	8,700	8,800			
Leisure and Hospitality	7,300	7,400	7,400	3,600	4,400	4,900	4,900	4,900	4,900	5,200			
Other Services	1,900	1,900	1,900	1,500	1,600	1,700	1,700	1,700	1,700	1,800			
Government	8,300	8,700	8,200	8,200	8,000	7,600	7,500	8,100	8,100	7,900			
Federal Government	500	500	500	500	500	500	500	800	700	500			
State and Local Government	7,800	8,200	7,700	7,700	7,500	7,100	7,000	7,300	7,400	7,400			

Benchmark year 2019, quarter 1, rev. 11/10/2020

Equal Opportunity Employer/ Program available in alternative format/ reasonable accommodations: 602-771-1110, TDD 1-800-367-8939

Nonfarm Employment

Prepared in Cooperation with the U.S. Department of Labor, Bureau of Labor Statistics

Arizona Office of Economic Opportunity

2020

Navajo County

	JAN	FEB	MAR	APR	MAY	JUN	JUL	AUG	SEP	OCT	NOV	DEC	AVG
Total Nonfarm	26,625	26,800	26,950	25,125	25,475	25,200	24,750	26,450	26,450	26,325			
Total Private	17,075	17,150	17,200	15,675	15,925	16,125	16,025	16,300	16,125	16,025			
Goods Producing	1,825	1,850	1,800	1,475	1,500	1,525	1,500	1,500	1,500	1,525			
Mining and Construction	1,525	1,525	1,500	1,250	1,275	1,275	1,250	1,250	1,250	1,275			
Manufacturing	300	325	300	225	225	250	250	250	250	250			
Service-Providing	24,800	24,950	25,150	23,650	23,975	23,675	23,250	24,950	24,950	24,800			
Private Service-Providing	15,250	15,300	15,400	14,200	14,425	14,600	14,525	14,800	14,625	14,500			
Trade, Transportation, and Utilities	4,500	4,525	4,525	4,325	4,400	4,525	4,500	4,525	4,450	4,375			
Information	250	250	250	250	225	225	250	225	225	225			
Financial Activities	625	625	625	475	475	475	475	475	475	475			
Professional and Business Services	1,175	1,175	1,200	1,075	1,075	1,075	1,075	1,050	1,050	1,050			
Educational and Health Services	4,675	4,675	4,675	4,450	4,475	4,350	4,275	4,525	4,550	4,575			
Leisure and Hospitality	3,500	3,525	3,575	3,150	3,300	3,450	3,450	3,500	3,400	3,325			
Other Services	525	525	550	475	475	500	500	500	475	475			
Government	9,550	9,650	9,750	9,450	9,550	9,075	8,725	10,150	10,325	10,300			
Federal Government	1,750	1,775	1,850	1,775	1,850	1,900	1,775	1,900	1,900	1,825			
State and Local Government	7,800	7,875	7,900	7,675	7,700	7,175	6,950	8,250	8,425	8,475			

Benchmark year 2019, quarter 1, rev. 11/10/2020

Equal Opportunity Employer/ Program available in alternative format/ reasonable accommodations: 602-771-1110, TDD 1-800-367-8939

Nonfarm Employment

Prepared in Cooperation with the U.S. Department of Labor, Bureau of Labor Statistics

Arizona Office of Economic Opportunity

2020

Pima County(Tucson MSA)

	JAN	FEB	MAR	APR	MAY	JUN	JUL	AUG	SEP	OCT	NOV	DEC	AVG
Total Nonfarm	391,100	395,600	393,200	361,300	368,900	369,600	364,300	372,700	374,900	379,500			
Total Private	309,600	312,300	310,800	280,300	289,500	300,500	295,000	295,400	295,900	300,400			
Goods Producing	47,400	47,600	47,100	45,900	47,300	47,300	46,800	46,900	46,200	46,700			
Mining and Construction	19,800	20,000	19,800	18,700	20,200	20,300	20,000	20,100	19,900	20,300			
Manufacturing	27,600	27,600	27,300	27,200	27,100	27,000	26,800	26,800	26,300	26,400			

Service-Providing	343,700	348,000	346,100	315,400	321,600	322,300	317,500	325,800	328,700	332,800
Private Service-Providing	262,200	264,700	263,700	234,400	242,200	253,200	248,200	248,500	249,700	253,700
Trade, Transportation, and Utilities	62,700	62,400	63,000	60,500	61,600	64,100	63,800	65,000	65,300	66,800
Information	5,400	5,600	5,500	3,900	3,900	4,100	4,000	4,100	4,100	4,100
Financial Activities	17,100	17,500	17,400	17,000	16,500	16,400	16,300	16,200	16,000	15,900
Professional and Business Services	50,400	50,900	50,100	46,600	46,900	47,400	46,500	46,100	45,800	46,600
Educational and Health Services	69,400	69,900	69,500	64,000	64,800	66,000	65,800	65,500	65,900	66,600
Leisure and Hospitality	43,500	44,600	44,300	30,900	35,500	41,600	38,400	38,200	39,200	40,200
Other Services	13,700	13,800	13,900	11,500	13,000	13,600	13,400	13,400	13,400	13,500
Government	81,500	83,300	82,400	81,000	79,400	69,100	69,300	77,300	79,000	79,100
Federal Government	13,000	13,000	13,100	13,100	13,100	13,100	13,000	13,500	13,600	13,200
State and Local Government	68,500	70,300	69,300	67,900	66,300	56,000	56,300	63,800	65,400	65,900

Benchmark year 2019, quarter 1, rev. 11/10/2020

Equal Opportunity Employer/ Program available in alternative format/ reasonable accommodations: 602-771-1110, TDD 1-800-367-8939

Nonfarm Employment

Prepared in Cooperation with the U.S. Department of Labor, Bureau of Labor Statistics

Arizona Office of Economic Opportunity

2020

Pinal County

	JAN	FEB	MAR	APR	MAY	JUN	JUL	AUG	SEP	OCT	NOV	DEC	AVG
Total Nonfarm	62,375	63,275	63,250	54,750	54,900	53,775	53,325	55,800	56,125	56,400			
Total Private	42,575	43,100	43,025	34,725	34,525	34,300	34,250	34,575	34,600	34,975			
Goods Producing	7,650	7,700	7,725	6,950	6,950	7,025	7,125	7,075	7,100	7,150			
Mining and Construction	3,500	3,500	3,550	3,150	3,150	3,200	3,250	3,200	3,200	3,225			
Manufacturing	4,150	4,200	4,175	3,800	3,800	3,825	3,875	3,875	3,900	3,925			
Service-Providing	54,725	55,575	55,525	47,800	47,950	46,750	46,200	48,725	49,025	49,250			
Private Service-Providing	34,925	35,400	35,300	27,775	27,575	27,275	27,125	27,500	27,500	27,825			
Trade, Transportation, and Utilities	11,250	11,275	11,350	9,575	9,625	9,625	9,675	9,700	9,600	9,775			
Information	575	575	575	450	450	450	425	425	425	425			
Financial Activities	1,550	1,550	1,575	1,275	1,250	1,225	1,225	1,225	1,225	1,225			
Professional and Business Services	6,725	6,700	6,725	5,525	5,450	5,450	5,400	5,425	5,450	5,525			
Educational and Health Services	6,850	6,925	6,975	5,675	5,700	5,475	5,400	5,750	5,775	5,750			
Leisure and Hospitality	6,300	6,675	6,425	4,175	3,975	3,925	3,875	3,900	3,925	4,025			
Other Services	1,675	1,700	1,675	1,100	1,125	1,125	1,125	1,075	1,100	1,100			
Government	19,800	20,175	20,225	20,025	20,375	19,475	19,075	21,225	21,525	21,425			
Federal Government	1,475	1,450	1,450	1,375	1,375	1,400	1,400	1,425	1,425	1,400			
State and Local Government	18,325	18,725	18,775	18,650	19,000	18,075	17,675	19,800	20,100	20,025			

Benchmark year 2019, quarter 1, rev. 11/10/2020

Equal Opportunity Employer/ Program available in alternative format/ reasonable accommodations: 602-771-1110, TDD 1-800-367-8939

# Nonfarm Employment

Prepared in Cooperation with the U.S. Department of Labor, Bureau of Labor Statistics  
Arizona Office of Economic Opportunity

2020

Santa Cruz County

	JAN	FEB	MAR	APR	MAY	JUN	JUL	AUG	SEP	OCT	NOV	DEC	AVG
Total Nonfarm	13,475	13,500	13,475	12,175	12,200	12,000	11,225	12,075	12,025	12,250			
Total Private	9,700	9,700	9,675	8,375	8,400	8,300	7,725	7,700	7,675	7,900			
Goods Producing	700	675	675	550	550	550	525	525	525	525			
Service-Providing	12,775	12,825	12,800	11,625	11,650	11,450	10,700	11,550	11,500	11,725			
Private Service-Providing	9,000	9,025	9,000	7,825	7,850	7,750	7,200	7,175	7,150	7,375			
Trade, Transportation, and Utilities	5,650	5,625	5,600	5,075	5,100	5,100	4,625	4,500	4,500	4,650			
Other Private Service-Providing	3,350	3,400	3,400	2,750	2,750	2,650	2,575	2,675	2,650	2,725			
Government	3,775	3,800	3,800	3,800	3,800	3,700	3,500	4,375	4,350	4,350			
Federal Government	1,725	1,725	1,725	1,725	1,725	1,725	1,750	1,750	1,750	1,750			
State and Local Government	2,050	2,075	2,075	2,075	2,075	1,975	1,750	2,625	2,600	2,600			

Benchmark year 2019, quarter 1, rev. 11/10/2020

Equal Opportunity Employer/ Program available in alternative format/ reasonable accomodations: 602-771-1110, TDD 1-800-367-8939

# Nonfarm Employment

Prepared in Cooperation with the U.S. Department of Labor, Bureau of Labor Statistics  
Arizona Office of Economic Opportunity

2020

Yavapai County(Prescott MSA)

	JAN	FEB	MAR	APR	MAY	JUN	JUL	AUG	SEP	OCT	NOV	DEC	AVG
Total Nonfarm	65,400	66,200	65,800	62,100	63,900	64,600	64,000	65,900	65,800	66,200			
Total Private	54,300	54,700	54,400	50,800	52,800	54,500	54,000	54,900	54,600	55,200			
Goods Producing	9,800	9,900	9,900	9,700	9,800	10,200	10,300	10,400	10,400	10,500			
Mining and Construction	6,100	6,200	6,200	6,200	6,200	6,500	6,500	6,700	6,700	6,800			
Manufacturing	3,700	3,700	3,700	3,500	3,600	3,700	3,800	3,700	3,700	3,700			
Service-Providing	55,600	56,300	55,900	52,400	54,100	54,400	53,700	55,500	55,400	55,700			
Private Service-Providing	44,500	44,800	44,500	41,100	43,000	44,300	43,700	44,500	44,200	44,700			
Trade, Transportation, and Utilities	12,500	12,400	12,400	12,300	12,400	12,700	12,500	12,600	12,400	12,600			
Information	500	500	500	500	500	500	500	500	500	500			
Financial Activities	2,100	2,100	2,100	2,100	2,100	2,100	2,100	2,100	2,100	2,100			
Professional and Business Services	4,400	4,500	4,400	4,200	4,300	4,200	4,300	4,400	4,200	4,300			
Educational and Health Services	12,500	12,600	12,500	11,900	11,900	12,000	12,000	12,500	12,600	12,700			
Leisure and Hospitality	10,200	10,400	10,300	8,300	9,900	10,700	10,200	10,200	10,200	10,300			
Other Services	2,300	2,300	2,300	1,800	1,900	2,100	2,100	2,200	2,200	2,200			

Government	11,100	11,500	11,400	11,300	11,100	10,100	10,000	11,000	11,200	11,000
Federal Government	1,500	1,500	1,600	1,700	1,700	1,700	1,600	1,900	1,900	1,700
State and Local Government	9,600	10,000	9,800	9,600	9,400	8,400	8,400	9,100	9,300	9,300

Benchmark year 2019, quarter 1, rev. 11/10/2020

Equal Opportunity Employer/ Program available in alternative format/ reasonable accommodations: 602-771-1110, TDD 1-800-367-8939

Nonfarm Employment

Prepared in Cooperation with the U.S. Department of Labor, Bureau of Labor Statistics

Arizona Office of Economic Opportunity

2020

Yuma County(Yuma MSA)

	JAN	FEB	MAR	APR	MAY	JUN	JUL	AUG	SEP	OCT	NOV	DEC	AVG
Total Nonfarm	58,800	59,300	59,100	52,300	52,900	51,800	52,000	53,600	53,800	54,500			
Total Private	43,900	44,300	44,100	37,900	38,600	38,700	39,000	39,300	39,300	40,100			
Goods Producing	5,800	5,900	5,900	5,500	5,200	5,000	4,900	5,000	5,000	5,200			
Mining and Construction	3,000	3,100	3,100	2,700	2,600	2,400	2,300	2,400	2,400	2,500			
Manufacturing	2,800	2,800	2,800	2,800	2,600	2,600	2,600	2,600	2,600	2,700			
Service-Providing	53,000	53,400	53,200	46,800	47,700	46,800	47,100	48,600	48,800	49,300			
Private Service-Providing	38,100	38,400	38,200	32,400	33,400	33,700	34,100	34,300	34,300	34,900			
Trade, Transportation, and Utilities	12,200	12,300	12,200	11,200	11,200	11,400	11,700	11,800	11,800	11,800			
Information	400	400	400	400	400	400	400	400	400	400			
Financial Activities	2,100	2,100	2,100	2,000	2,000	2,000	2,000	2,100	2,100	2,100			
Professional and Business Services	6,300	6,300	6,400	5,500	5,400	5,400	5,600	5,500	5,600	5,800			
Educational and Health Services	8,600	8,600	8,500	7,800	7,600	7,400	7,400	7,600	7,500	7,500			
Leisure and Hospitality	6,700	6,900	6,800	3,900	5,200	5,400	5,300	5,100	5,100	5,500			
Other Services	1,800	1,800	1,800	1,600	1,600	1,700	1,700	1,800	1,800	1,800			
Government	14,900	15,000	15,000	14,400	14,300	13,100	13,000	14,300	14,500	14,400			
Federal Government	3,700	3,700	3,700	3,700	3,700	3,700	3,700	3,900	3,900	3,800			
State and Local Government	11,200	11,300	11,300	10,700	10,600	9,400	9,300	10,400	10,600	10,600			

Benchmark year 2019, quarter 1, rev. 11/10/2020

Equal Opportunity Employer/ Program available in alternative format/ reasonable accommodations: 602-771-1110, TDD 1-800-367-8939

### About This Publication

*Arizona's Workforce* is published 14 times a year by the State of Arizona Office of Economic Opportunity (OEO) — 12 times as the monthly Employment Report and twice a year as a two-year Forecast Report. OEO is the state agency responsible for labor market information and demographic data for the state of Arizona.

Material published in *Arizona's Workforce* is in the public domain and can be reproduced without further permission. Appropriate citations are requested.

**Next Release:**

***November Employment Report, Thursday, December 17<sup>th</sup> 2020, 10:00 am***

***Location:*** ACA Conference Rooms, Camelback, 100 North 7th Avenue, Phoenix, AZ 85007

#### Office of Economic Opportunity

Sandra Watson	Interim Director
Doug Walls	Research Administrator
Stephanie Faltermeier	Labor System Manager

**On the web:** <https://laborstats.az.gov/>

**Phone:** 602-771-2222

To be placed on the *Arizona Workforce* email distribution list, or to send feedback or questions, contact:

[labor.info@azstats.gov](mailto:labor.info@azstats.gov)

### — Equal Opportunity Employer/Program —

Under Titles VI and VII of the Civil Rights Act of 1964 (Title VI & VII), and the Americans with Disabilities Act of 1990 (ADA), Section 504 of the Rehabilitation Act of 1973, and the Age Discrimination Act of 1975, the Department prohibits discrimination in admissions, programs, services, activities, or employment based on race, color, religion, sex, national origin, age, and disability. The Department must make a reasonable accommodation to allow a person with a disability to take part in a program, service or activity. For example, this means if necessary, the Department must provide sign language interpreters for people who are deaf, a wheelchair accessible location, or enlarged print materials. It also means that the Department will take any other reasonable action that allows you to take part in and understand a program or activity, including making reasonable changes to an activity. If you believe that you will not be able to understand or take part in a program or activity because of your disability, please let us know of your disability needs in advance if at all possible. To request this document in alternative format or for further information about this policy, contact the Department of Economic Security, Division of Developmental Disabilities ADA Coordinator at 602 542-6825 ; TTY/TDD Services: 7-1-1.

This page left intentionally blank.