



THE UNIVERSITY OF ARIZONA  
**Eller Executive  
Education**

# Managing Teams to Return Stronger in 2022

**Joe Carella**

---

Eller Executive Education  
carella@arizona.edu

# What we will cover

- It's still a VUCA World
- Our workplace is changing
  - Lessons from our research
- Managing High Impact Team

# Answer in Chat

How is the turbulence affecting you and your business?

# Pre and Post

## Pre

- Sales
- Supply Chain
- Basic Health



## Post

- Workforce
- Supply Chain
- Prices

# Lessons from our research

- Our external environment can force us to pivot when we least expect it
- As conditions change we must know how to adapt
- Our workplace is changing (expectations and behaviors)
- We must help our team members see our vision and execute accordingly

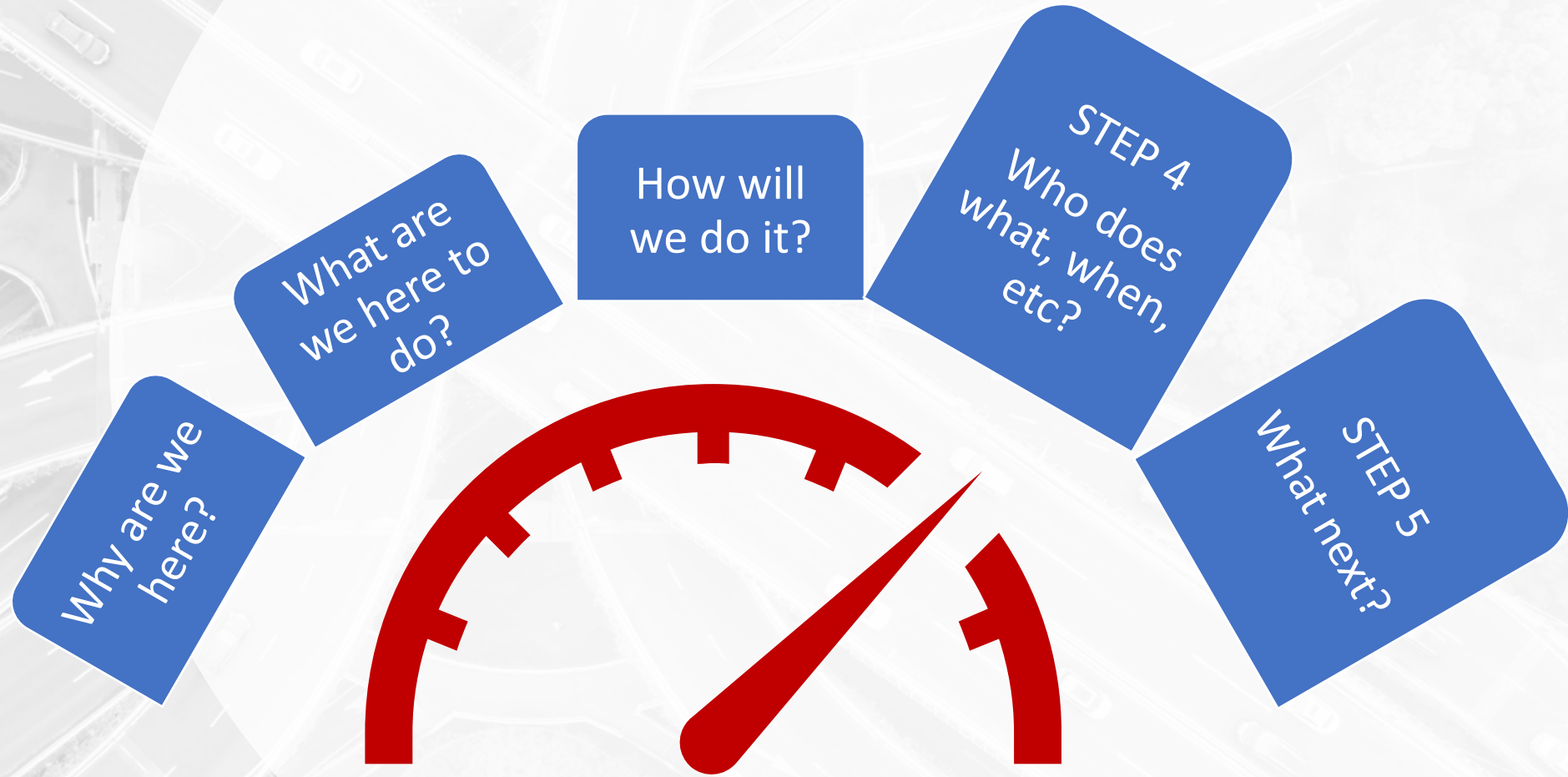
# Your answers please

How do you keep your team engaged?

# Managing High Impact Teams



# Managing High Impact Teams







THE UNIVERSITY OF ARIZONA  
**Eller Executive  
Education**

**Thank you!**

<https://executive.eller.arizona.edu/programs/high-impact-leadership>

**Joe Carella**

---

Eller Executive Education  
carella@arizona.edu