



THE UNIVERSITY OF ARIZONA
**Eller Executive
Education**

Managing Teams to Return Stronger Post Pandemic

Joe Carella

Eller Executive Education
carella@arizona.edu

What we will cover

- It's still a VUCA World
- Our workplace is changing
 - Lessons from our research
- Managing High Impact Team

Pre and Post

Pre

- Sales
- Supply Chain
- Basic Health



Post

- Workforce
- Supply Chain
- Prices

Lessons from our research

- Our external environment can force us to pivot when we least expect it
- As conditions change we must know how to adapt
- Our workplace is changing (expectations and behaviors)
- We must help our team members see our vision and execute accordingly

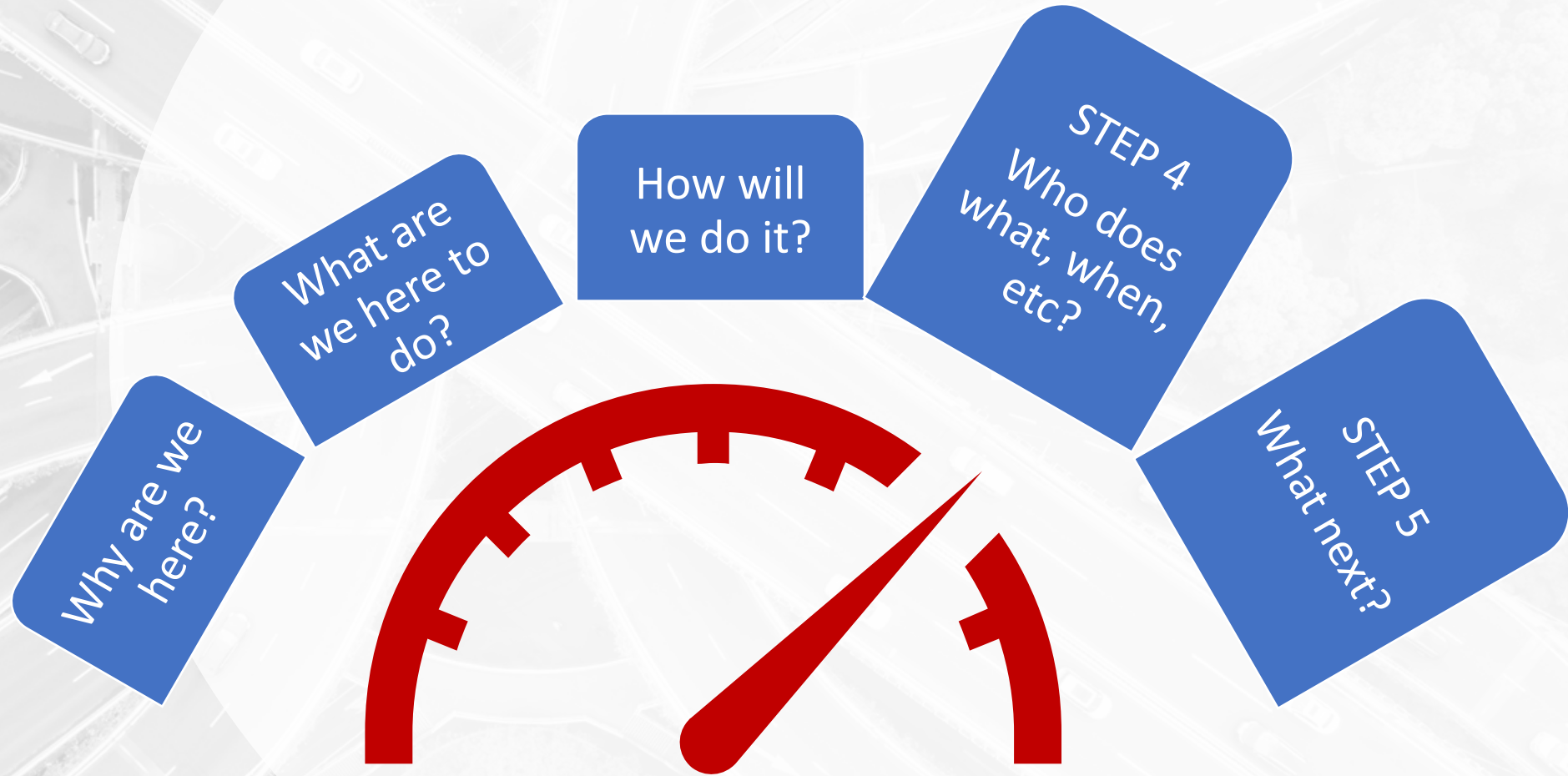
What we will cover

How do you work with your team to execute your strategy?

Managing High Impact Teams



Managing High Impact Teams





THE UNIVERSITY OF ARIZONA
**Eller Executive
Education**

Thank you!

<https://executive.eller.arizona.edu/programs/high-impact-leadership>

Joe Carella

Eller Executive Education
carella@arizona.edu