



ASU Learning Enterprise

ULC Pathways

April 2022

ASU Learning Enterprise

**Guided by the belief that everyone
should have universal access to
education and opportunity
at every stage of life.**



Universal Learner Courses

Start Anytime. Choose from 25+ for-credit courses, all available online, many offered as self-paced. Pay only \$25 to start.

Universal Eligibility. No Transcripts needed. No application required. No GPA thresholds.

No penalty for failure. Pay \$400 for your course only if you successfully pass with a “C” or higher. Total course cost is \$425.

Earn college credit. Receive a transcript with your completed courses.

Earn admission into ASU if you complete your courses with a 2.75 GPA or higher.



Impact Population for ULCs

Who are our learners and where are we seeing the most growth in ULCs

Young, Exceptionally Gifted Learners

Students as young as eight years old have utilized the ubiquitous access point of ULCs to get ahead, far before the existing collegiate systems would allow them to advance.



High School Learners (Including Homeschool)

Nearly 20% of ULC learners are now high school students using our courses as alternatives to AP and Dual Enrollment. These include dual enrollment, concurrent enrollment, and homeschool learners.



Earned Admissions Learners

Over 50% of our learners were previously inadmissible to ASU but use ULCs to gain admission. Over 3300 students have successfully earned admission to ASU with thousands more in the pipeline.



Non-ASU College Students

University students across the country are using ULCs as low-risk alternatives to some of their collegiate courses. With no risk to their GPA, they can try out their classes with us and transfer them to their home institutions.



Working Learners Interested in Pathways into Degree Programs

Learners that are focused on both industry relevant credentials and academic credentialing. We're now constructing stacks of ULCs that will provide workforce aligned certificates that stack into higher level degree programs.



Intentional Community Engagement

Individual Learners

All learners, regardless of partnership status, receive:



Access to our catalog of courses



Dedicated support resources



Targeted communications



Motivation campaigns



ASU 360 Life Services

All learners can also obtain tutoring resources for \$25/semester.

Base Partnership

Organizations that then decide to partner with our team receive a standard partnership package.



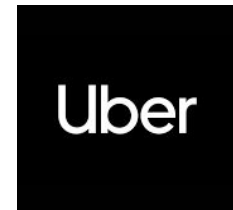
Access to Real Time Analytics Dashboard



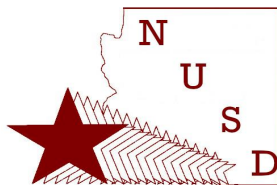
The ability to select the specific courses or pathways that are available to their learners

Organizations may also request a personalized website for their learners

Today, more than 390 partners leverage ULCs



Friendship Public
Charter School
GRADES PRE-K3 TO 12



ULC Connection Portfolio

Partner Support Options

Individual Learners, no formal partnership

Use of ULCs without
intentional
partnership
development



Course/Package Selections

Partner portal access
with product
integration consult

Optional:
personalized website



Modified Pathways

Program
development /
learner supports
provided by partner
organization

Optional: Real-time
learning analytics
reports



Curated Courses & Programs

Program
development /
learner supports
provided by LE/ASU



ULC Curriculum Packages / Pathways

(IN DEVELOPMENT)

Career Path Certificates (Short term stackable)

ABDA Certificate

Google IT
Certificate

Project
Management
Certificate

TBD Certificate
(Healthcare)

TBD Certificate
(Programming)

TBD Certificate
(Digital Audiences)

Earned Admissions & General Education Pathways (Long term value, stackable)

Art & Design

Computer Sci &
Information Tech

Exploratory

Nursing,
Nutrition, and
Health

Business &
Entrepreneurship

Education &
Teaching

Humanities &
Liberal Arts

Social &
Behavioral
Sciences

Communication
& Digital Media

Engineering

Law, Justice, and
Public Service

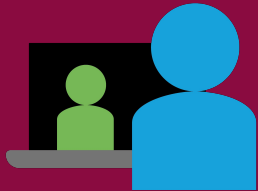
STEM

ULC Curriculum Pathways

Optimized and Curated Curriculum Options

Individual Learners, no formal partnership

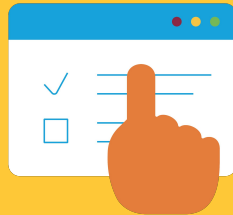
Individual Sign Up
via ea.asu.edu, no
curation of courses



Course/Package Selections

Course selection &
curation

Existing
developmental
courses (ASU 101)



Modified Pathways

Customized
packages (e.g. an
alternative STEM
pathway)



Curated Courses & Programs

Curated
developmental
courses (ASU 101)

Opportunities for
co-created
curriculum and
pathways



Next Steps

Getting started is easy! Learners can be enrolled and starting classes in under a week. Learn more at ea.asu.edu

Schedule an informational discussion today at ulcoursesbd@asu.edu!

Contact Information: **Lukas Wenrick, Director, ULC Pathways**
lukas.wenrick@asu.edu

