



OFFICE OF ECONOMIC OPPORTUNITY

Monthly Employment Report

July 21, 2022

Total Nonfarm Employment Increased by 104,400 Jobs Year Over Year in June 2022 Arizona Unemployment Increased to 3.3%

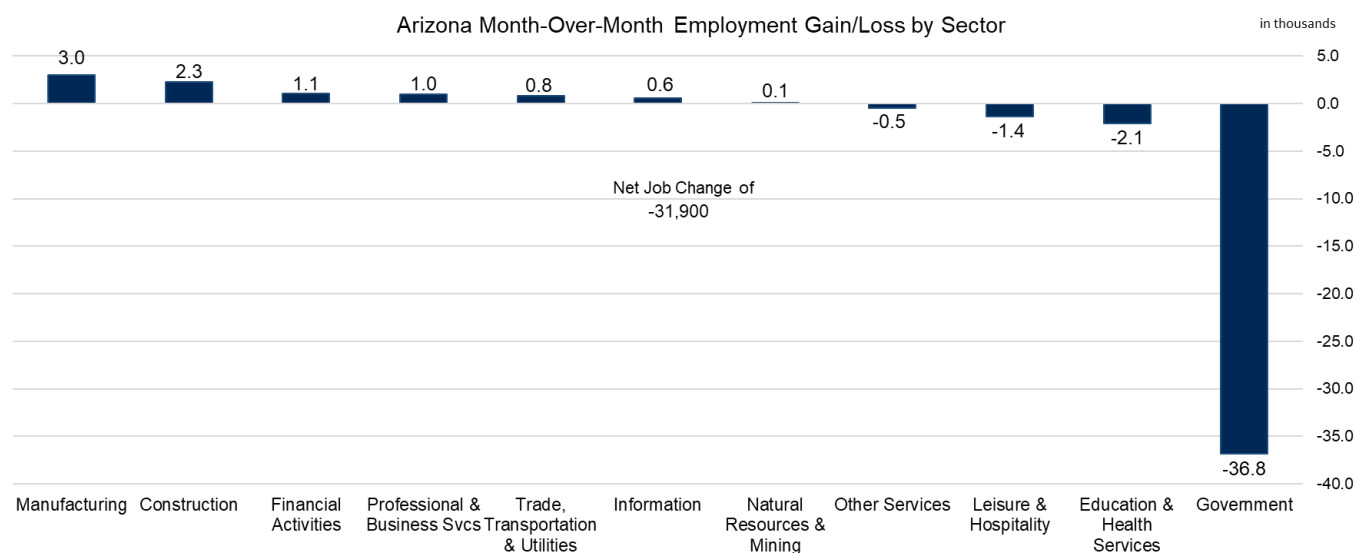
The Arizona seasonally adjusted unemployment rate increased from 3.2% in May 2022 to 3.3% in June 2022. The U.S. seasonally adjusted unemployment rate did not change over the month, remaining at 3.6% in June 2022. Month over month, Arizona's seasonally adjusted labor force increased by 8,324 individuals or 0.2%. Year over year, the labor force increased by 52,680 individuals or 1.5%. Month over month, Arizona total nonfarm employment decreased by 31,900 jobs or 1.0%. Year over year, total nonfarm employment increased by 104,400 jobs or 3.6%.

Arizona, U.S. Economic Indicators

Unemployment Rate (Seasonally Adj.)	June '22	May '22	June '21
Arizona	3.3%	3.2%	5.2%
United States	3.6%	3.6%	5.9%
Arizona (Unadj. Rate)	4.0%	3.4%	5.9%
Arizona Nonfarm Employment (in Thousands)	June '22	May '22	June '21
Overall	3,007.8	3,039.7	2,903.4
Over-Month % Chg.	-1.0%	-0.2%	-1.1%
Over-Year % Chg.	3.6%	3.5%	5.4%

Month Over Month

Arizona nonfarm employment decreased by 31,900 jobs or 1.0% in June. Prior to the pandemic, nonfarm employment averaged a loss of 51,600 jobs in June (2010-2019). The government sector¹ recorded a loss of 36,800 jobs in June, less than the pre-pandemic (2010-2019) average loss of 42,700 jobs. Government sector job losses occurred within State and Local Government Education, which reported seasonal losses because of the end of the school year. The private sector recorded a gain of 4,900 jobs in June, led by gains in Manufacturing. Prior to the pandemic (2010-2019), private sector employment averaged a loss of 8,900 jobs in June.



¹ The government sector includes public K-12 education and public postsecondary education. Education & Health Services includes private sector education.

Employment gains were reported in the following sectors:

- Manufacturing (3,000 jobs)
- Construction (2,300 jobs)
- Financial Activities (1,100 jobs)
- Professional & Business Services (1,000 jobs)
- Trade, Transportation & Utilities (800 jobs)
- Information (600 jobs)
- Natural Resources & Mining (100)

Losses were reported in the following sectors:

- Other Services (-500 jobs)
- Leisure & Hospitality (-1,400 jobs)
- Education & Health Services² (-2,100 jobs)
- Government (-36,800)

Year Over Year

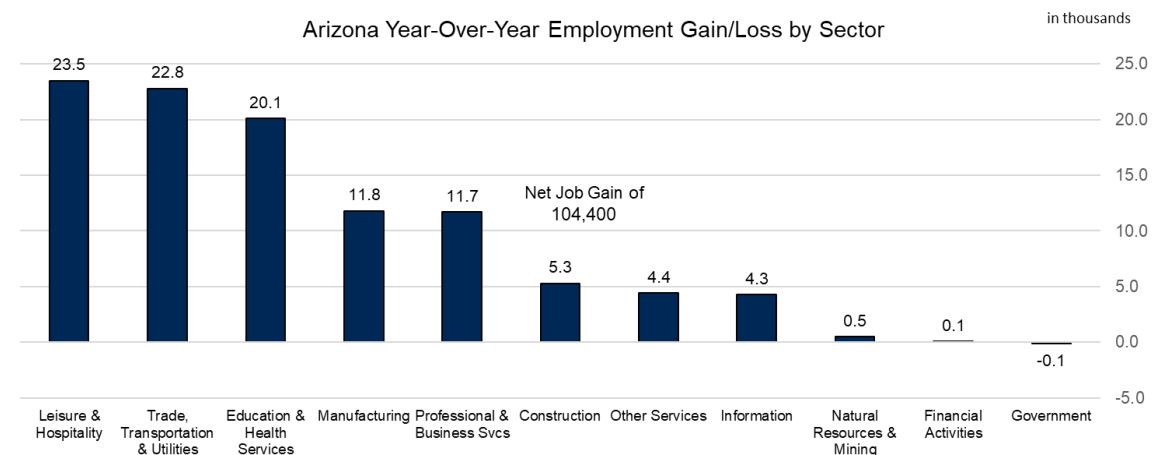
Arizona nonfarm employment increased by 104,400 jobs or 3.6% in June year-over-year. Private sector employment increased by 104,500 jobs year-over-year, while Government employment decreased by 100 jobs year-over-year.

Gains were reported in the following sectors:

- Leisure & Hospitality (23,500 jobs)
- Trade, Transportation & Utilities (22,800 jobs)
- Education & Health Services (20,100 jobs)
- Manufacturing (11,800 jobs)
- Professional & Business Services (11,700)
- Construction (5,300)
- Other Services (4,400)
- Information (4,300)
- Natural Resources & Mining (500)
- Financial Activities (100)

Losses were reported in the following sector:

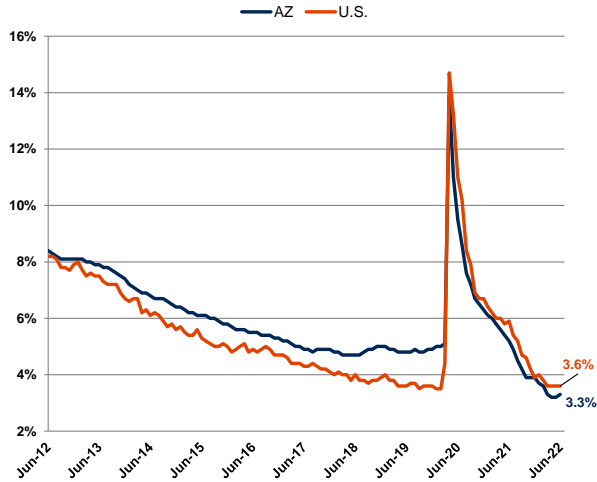
- Government (-100 jobs)



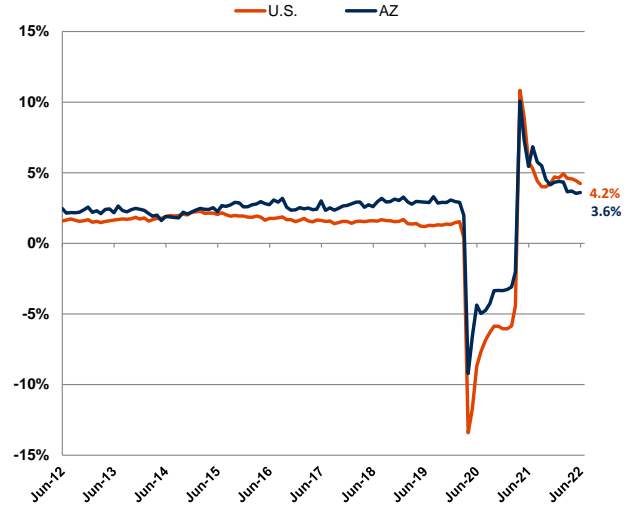
² Includes private sector education only.

LABOR MARKET TRENDS CHARTS

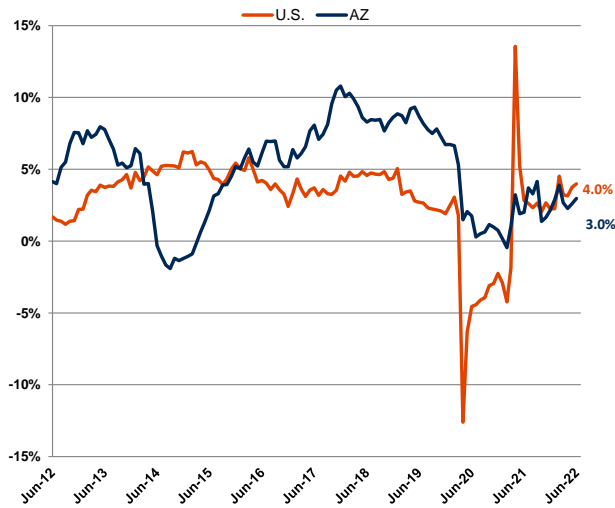
Arizona & U.S. Unemployment Rate
Seasonally Adjusted



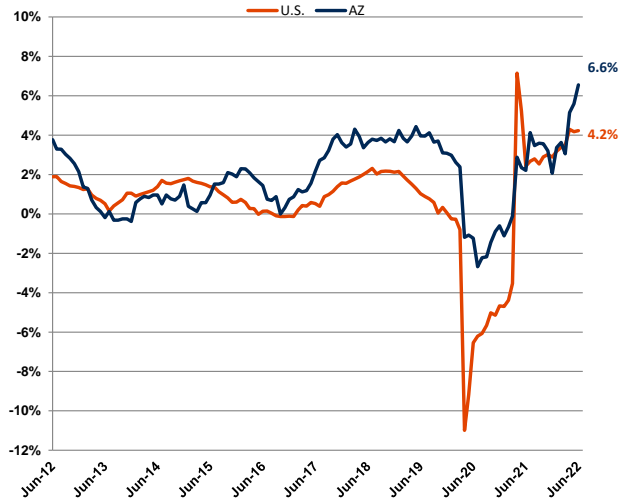
Arizona & U.S. Nonfarm Employment
Year-to-Year Percent Change



Arizona & U.S. Construction Employment
Year-to-Year Percent Change



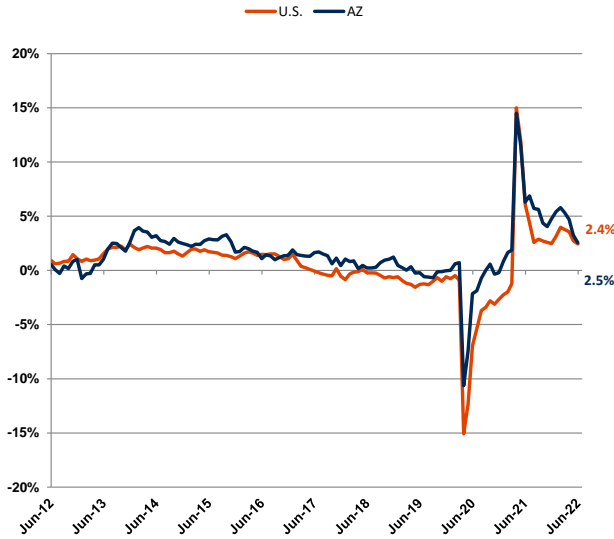
Arizona & U.S. Manufacturing Employment
Year-to-Year Percent Change



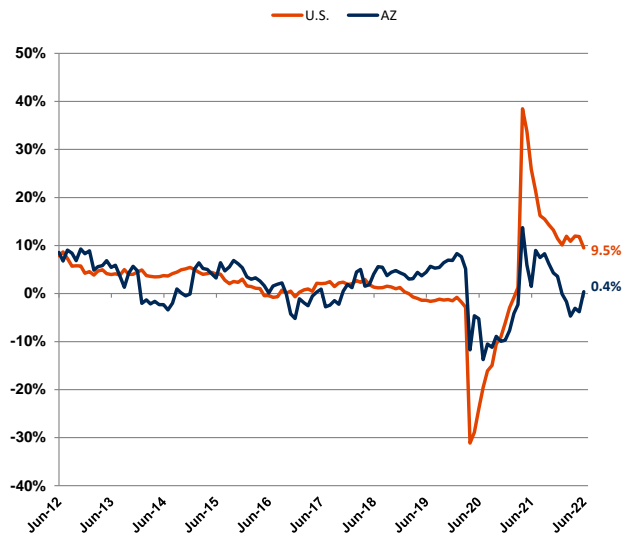
Source: Prepared by the Arizona Office of Economic Opportunity, in cooperation with the U.S. Dept. of Labor, Bureau of Labor Statistics

LABOR MARKET TRENDS CHARTS

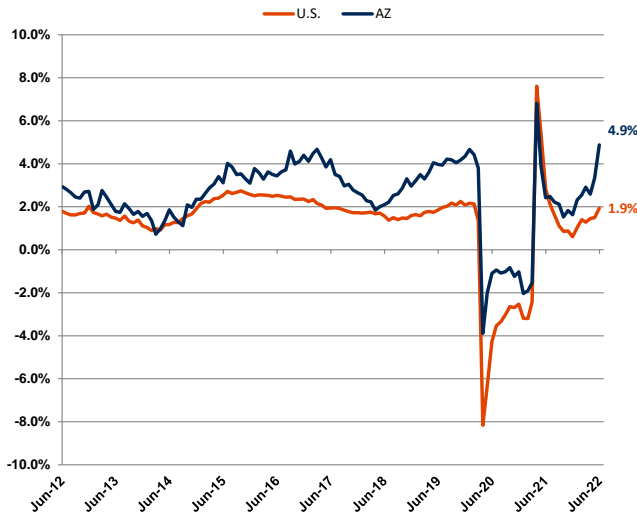
Arizona & U.S. Retail Trade
Year-to-Year Percent Change



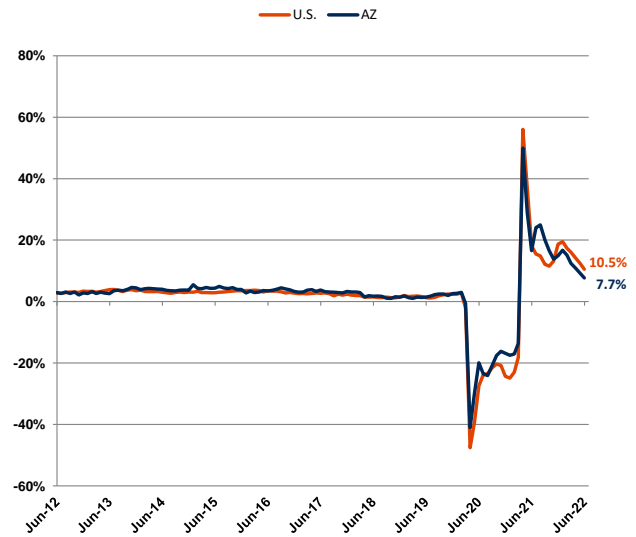
Arizona & U.S. Employment Services
Year-to-Year Percent Change



Arizona & U.S. Health Care
Year-to-Year Percent Change



Arizona & U.S. Leisure & Hospitality
Year-to-Year Percent Change



Source: Prepared by the Arizona Office of Economic Opportunity, in cooperation with the U.S. Dept. of Labor, Bureau of Labor Statistics

Table 1

Labor Force, Employment, Unemployment and Unemployment Rates^(a)

(in Thousands)

ARIZONA	June 2022^(c)	May 2022^(d)	June 2021^(d)	Monthly/Yearly Change	
				May '22 - June '22	June '21 - June '22
Civilian Labor Force ^(e)	3,586.8	3,577.6	3,525.5	9.2	61.3
Unemployment	144.1	120.8	206.8	23.3	-62.7
Unemployment Rate	4.0%	3.4%	5.9%	0.6	-1.9
Unemployment Rate (Seasonally Adjusted) ^(f)	3.3%	3.2%	5.2%	0.1	-1.9
Total Employment	3,442.7	3,456.8	3,318.8	-14.1	124.0
FLAGSTAFF MSA (Coconino County)					
Civilian Labor Force ^(e)	75.4	74.2	73.0	1.2	2.4
Unemployment	3.6	3.1	5.2	0.5	-1.5
Unemployment Rate (Unadjusted)	4.8%	4.2%	7.1%	0.6	-2.3
Total Employment	71.7	71.1	67.8	0.7	3.9
LAKE HAVASU CITY-KINGMAN MSA (Mohave County)					
Civilian Labor Force ^(e)	90.7	89.4	88.7	1.2	2.0
Unemployment	4.2	3.5	5.8	0.7	-1.5
Unemployment Rate (Unadjusted)	4.7%	3.9%	6.5%	0.8	-1.8
Total Employment	86.4	85.9	82.9	0.5	3.5
PHOENIX-MESA-SCOTTSDALE MSA (Maricopa & Pinal Counties)					
Civilian Labor Force ^(e)	2,558.1	2,549.4	2,512.1	8.7	46.0
Unemployment	86.9	73.4	134.1	13.5	-47.2
Unemployment Rate (Unadjusted)	3.4%	2.9%	5.3%	0.5	-1.9
Total Employment	2,471.2	2,476.1	2,378.0	-4.8	93.2
PRESCOTT MSA (Yavapai County)					
Civilian Labor Force ^(e)	107.4	107.4	105.6	0.1	1.8
Unemployment	3.7	3.0	5.2	0.7	-1.6
Unemployment Rate (Unadjusted)	3.4%	2.8%	4.9%	0.6	-1.5
Total Employment	103.8	104.4	100.4	-0.6	3.4
SIERRA VISTA-DOUGLAS MSA (Cochise County)					
Civilian Labor Force ^(e)	48.9	48.5	48.7	0.4	0.2
Unemployment	2.1	1.8	2.9	0.3	-0.7
Unemployment Rate (Unadjusted)	4.3%	3.7%	5.9%	0.6	-1.6
Total Employment	46.8	46.7	45.9	0.1	0.9

Notes: For notes and source, see end of Table 1

(Continued on next page)

Table 1 (Cont.)

Labor Force, Employment, Unemployment and Unemployment Rates^{(a)(b)}

(in Thousands)

	Monthly/Yearly Change				
	June 2022(c)	May 2022(d)	June 2021(d)	May '22 - June '22	June '21 - June '22
<u>TUCSON MSA (Pima County)</u>					
Civilian Labor Force ^(e)	483.0	488.7	480.2	-5.7	2.9
Unemployment	19.1	16.3	28.4	2.9	-9.2
Unemployment Rate (Unadjusted)	4.0%	3.3%	5.9%	0.7	-1.9
Total Employment	463.9	472.4	451.8	-8.5	12.1
<u>YUMA MSA (Yuma County)</u>					
Civilian Labor Force ^(e)	97.4	94.4	91.9	3.0	5.6
Unemployment	16.8	13.6	15.5	3.2	1.2
Unemployment Rate (Unadjusted)	17.2%	14.4%	16.9%	2.8	0.3
Total Employment	80.7	80.8	76.3	-0.2	4.3

Notes: a) Labor force, unemployment, total employment, and unadjusted unemployment rates are produced by the Local Area Unemployment Statistics (LAUS) program in the Arizona Office of Employment and Population Statistics, in cooperation with the U.S. Dept. of Labor, Bureau of Labor Statistics (BLS). BLS data used as part of the input in producing LAUS data come from the monthly Household Survey, produced by the Census Bureau for the U.S. Department of Labor, Bureau of Labor Statistics.

For more information on the LAUS program, visit this website: <http://www.bls.gov/lau/laufaq.htm>

c) Preliminary

d) Revised

e) Adjusted to Current Population Survey (CPS 2017) to reflect place of residence

f) Normal seasonal variations have been eliminated to reflect underlying trends

MSA - Metropolitan Statistical Area

NA - Not Available

Source: Prepared by the Arizona Office of Economic Opportunity, in cooperation with the U.S. Dept. of Labor, Bureau of Labor Statistics

Table 2

Nonfarm Payroll Employment

(in Thousands, Not Seasonally Adjusted)

ARIZONA ^(a)				Amount Change		Percent Change	
	June 2022(b)	May 2022(c)	June 2021(c)	Monthly	Over-Year	Monthly	Over-Year
				May '22 - June '22	June '21 - June '22	May '22 - June '22	June '21 - June '22
Total Nonfarm Payroll Employment^(c,d)	3,007.8	3,039.7	2,903.4	-31.9	104.4	-1.0%	3.6%
Private Sector	2,632.2	2,627.3	2,527.7	4.9	104.5	0.2%	4.1%
Government	375.6	412.4	375.7	-36.8	-0.1	-8.9%	0.0%
Goods-Producing Industries	388.0	382.6	370.4	5.4	17.6	1.4%	4.8%
Manufacturing	191.9	188.9	180.1	3.0	11.8	1.6%	6.6%
Durable Goods	144.6	142.1	135.8	2.5	8.8	1.8%	6.5%
Fabricated Metal	22.4	21.9	21.4	0.5	1.0	2.3%	4.7%
Computer and Electronic Parts	33.9	33.3	32.6	0.6	1.3	1.8%	4.0%
Aerospace Products and Parts	30.5	30.2	29.5	0.3	1.0	1.0%	3.4%
Nondurable Goods	47.3	46.8	44.3	0.5	3.0	1.1%	6.8%
Natural Resources and Mining	12.6	12.5	12.1	0.1	0.5	0.8%	4.1%
Metal Ore Mining	11.0	11.0	10.3	0.0	0.7	0.0%	6.8%
Construction	183.5	181.2	178.2	2.3	5.3	1.3%	3.0%
Buildings	37.1	36.1	37.0	1.0	0.1	2.8%	0.3%
Heavy	20.7	20.5	19.4	0.2	1.3	1.0%	6.7%
Specialty Trades	125.7	124.6	121.8	1.1	3.9	0.9%	3.2%
Service-Providing Industries	2,619.8	2,657.1	2,533.0	-37.3	86.8	-1.4%	3.4%
Private Service Providing	2,244.2	2,244.7	2,157.3	-0.5	86.9	0.0%	4.0%
Trade, Transportation and Utilities	595.6	594.8	572.8	0.8	22.8	0.1%	4.0%
Trade	445.9	446.0	434.9	-0.1	11.0	0.0%	2.5%
Wholesale Trade	103.7	103.4	101.2	0.3	2.5	0.3%	2.5%
Retail Trade	342.2	342.6	333.7	-0.4	8.5	-0.1%	2.5%
Motor Vehicles and Parts	53.8	53.5	51.5	0.3	2.3	0.6%	4.5%
Furniture and Home Furnishings	10.4	10.5	10.2	-0.1	0.2	-1.0%	2.0%
Building Material, Garden Supply	34.0	34.0	31.6	0.0	2.4	0.0%	7.6%
Food and Beverage	60.3	60.4	61.5	-0.1	-1.2	-0.2%	-2.0%
Clothing and Accessories	17.3	17.1	16.2	0.2	1.1	1.2%	6.8%
General Merchandise	67.4	67.8	64.7	-0.4	2.7	-0.6%	4.2%
Department Stores	19.4	19.1	18.0	0.3	1.4	1.6%	7.8%
Other General merchandise	48.0	48.7	46.7	-0.7	1.3	-1.4%	2.8%
Transp., Warehousing, and Utilities	149.7	148.8	137.9	0.9	11.8	0.6%	8.6%
Utilities	11.8	11.8	11.8	0.0	0.0	0.0%	0.0%
Transportation and Warehousing	137.9	137.0	126.1	0.9	11.8	0.7%	9.4%
Truck Transportation	25.6	25.4	24.9	0.2	0.7	0.8%	2.8%
Information	51.3	50.7	47.0	0.6	4.3	1.2%	9.1%
Telecommunications	13.3	13.2	13.7	0.1	-0.4	0.8%	-2.9%
Financial Activities	244.5	243.4	244.4	1.1	0.1	0.5%	0.0%
Finance and Insurance	187.8	187.7	190.1	0.1	-2.3	0.1%	-1.2%
Credit Intermediation., Monetary Auth.	94.7	95.7	98.3	-1.0	-3.6	-1.0%	-3.7%
Financial Investments and Vehicles	20.6	20.5	19.9	0.1	0.7	0.5%	3.5%
Insurance Carriers	72.5	71.5	71.9	1.0	0.6	1.4%	0.8%
Real Estate and Rental and Leasing	56.7	55.7	54.3	1.0	2.4	1.8%	4.4%
Professional and Business Services	449.9	448.9	438.2	1.0	11.7	0.2%	2.7%
Professional, Scientific and Technical Services	179.5	177.9	167.2	1.6	12.3	0.9%	7.4%
Management of Companies and Enterprises	36.8	36.5	33.7	0.3	3.1	0.8%	9.2%
Administrative and Waste Services	233.6	234.5	237.3	-0.9	-3.7	-0.4%	-1.6%
Employment Services	101.7	101.2	101.3	0.5	0.4	0.5%	0.4%
Business Support Services	31.1	31.6	33.2	-0.5	-2.1	-1.6%	-6.3%
Services to Buildings and Dwellings	41.0	41.8	45.7	-0.8	-4.7	-1.9%	-10.3%
Education and Health Services	476.8	478.9	456.7	-2.1	20.1	-0.4%	4.4%
Educational Services	60.2	67.6	59.4	-7.4	0.8	-10.9%	1.3%
Health Care and Social Assistance	416.6	411.3	397.3	5.3	19.3	1.3%	4.9%
Health Care	350.2	346.0	333.9	4.2	16.3	1.2%	4.9%
Ambulatory Health Care Services	193.1	190.8	180.4	2.3	12.7	1.2%	7.0%
Hospitals	102.1	101.5	99.4	0.6	2.7	0.6%	2.7%
Nursing and Residential Care Facilities	55.0	53.7	54.1	1.3	0.9	2.4%	1.7%
Social Assistance	66.4	65.3	63.4	1.1	3.0	1.7%	4.7%
Leisure and Hospitality	330.4	331.8	306.9	-1.4	23.5	-0.4%	7.7%
Arts, Entertainment and Recreation	45.5	43.9	39.6	1.6	5.9	3.6%	14.9%
Accommodation and Food Services	284.9	287.9	267.3	-3.0	17.6	-1.0%	6.6%
Accommodation	38.9	38.2	35.3	0.7	3.6	1.8%	10.2%
Food Services and Drinking Places	246.0	249.7	232.0	-3.7	14.0	-1.5%	6.0%
Other Services (except Public Administration)	95.7	96.2	91.3	-0.5	4.4	-0.5%	4.8%
Government	375.6	412.4	375.7	-36.8	-0.1	-8.9%	0.0%
Federal Government	57.6	57.5	57.9	0.1	-0.3	0.2%	-0.5%
State Government	76.5	88.3	78.1	-11.8	-1.6	-13.4%	-2.0%
State Government Education	40.6	52.2	40.4	-11.6	0.2	-22.2%	0.5%
Other State Government	35.9	36.1	37.7	-0.2	-1.8	-0.6%	-4.8%
Local Government	241.5	266.6	239.7	-25.1	1.8	-9.4%	0.8%
Local Government Education	109.4	136.1	110.1	-26.7	-0.7	-19.6%	-0.6%
Other Local Government	132.1	130.5	129.6	1.6	2.5	1.2%	1.9%

Note: For notes and source, see end of Table 2

Table 2 (Cont.)

Nonfarm Payroll Employment

(in Thousands, Not Seasonally Adjusted)

PHOENIX-MESA-SCOTTSDALE MSA ¹				Amount Change		Percent Change	
	June 2022(b)	May 2022(c)	June 2021(c)	Monthly	Over-Year	Monthly	Over-Year
				May '22 - June '22	June '21 - June '22	May '22 - June '22	June '21 - June '22
Total Nonfarm Payroll Employment^(c,d)	2,259.2	2,273.5	2,172.9	-14.3	86.3	-0.6%	4.0%
Private Sector	2,040.9	2,034.3	1,951.4	6.6	89.5	0.3%	4.6%
Government	218.3	239.2	221.5	-20.9	-3.2	-8.7%	-1.4%
Goods-Producing Industries	292.3	287.8	278.8	4.5	13.5	1.6%	4.8%
Manufacturing	145.2	143.4	136.7	1.8	8.5	1.3%	6.2%
Durable Goods	106.3	105.0	100.5	1.3	5.8	1.2%	5.8%
Computer and Electronic Parts	30.2	29.6	29.0	0.6	1.2	2.0%	4.1%
Aerospace Products and Parts	15.8	15.6	15.4	0.2	0.4	1.3%	2.6%
Nondurable Goods	38.9	38.4	36.2	0.5	2.7	1.3%	7.5%
Natural Resources and Mining	3.0	3.0	2.7	0.0	0.3	0.0%	11.1%
Construction	144.1	141.4	139.4	2.7	4.7	1.9%	3.4%
Buildings	29.2	28.6	28.9	0.6	0.3	2.1%	1.0%
Heavy	15.7	15.5	15.1	0.2	0.6	1.3%	4.0%
Specialty Trades	99.2	97.3	95.4	1.9	3.8	2.0%	4.0%
Service-Providing Industries	1,966.9	1,985.7	1,894.1	-18.8	72.8	-0.9%	3.8%
Private Service Providing	1,748.6	1,746.5	1,672.6	2.1	76.0	0.1%	4.5%
Trade, Transportation and Utilities	452.5	451.4	433.1	1.1	19.4	0.2%	4.5%
Trade	335.5	335.7	325.7	-0.2	9.8	-0.1%	3.0%
Wholesale Trade	87.0	86.8	84.9	0.2	2.1	0.2%	2.5%
Retail Trade	248.5	248.9	240.8	-0.4	7.7	-0.2%	3.2%
Motor Vehicles and Parts	40.7	40.6	38.7	0.1	2.0	0.2%	5.2%
Building Material, Garden Supply	23.8	23.8	21.8	0.0	2.0	0.0%	9.2%
Food and Beverage	41.1	41.2	41.6	-0.1	-0.5	-0.2%	-1.2%
General Merchandise	45.2	45.4	43.8	-0.2	1.4	-0.4%	3.2%
Department Stores	14.7	14.4	13.6	0.3	1.1	2.1%	8.1%
Other General merchandise	30.5	31.0	30.2	-0.5	0.3	-1.6%	1.0%
Transportation, Warehousing and Utilities	117.0	115.7	107.4	1.3	9.6	1.1%	8.9%
Utilities	8.1	8.0	8.0	0.1	0.1	1.3%	1.3%
Transportation and warehousing	108.9	107.7	99.4	1.2	9.5	1.1%	9.6%
Truck transportation	19.8	19.7	19.3	0.1	0.5	0.5%	2.6%
Information	43.3	42.8	39.6	0.5	3.7	1.2%	9.3%
Telecommunications	11.0	10.9	11.4	0.1	-0.4	0.9%	-3.5%
Financial Activities	214.7	212.7	214.9	2.0	-0.2	0.9%	-0.1%
Finance and Insurance	169.0	168.3	171.2	0.7	-2.2	0.4%	-1.3%
Credit Intermediation, Monetary Auth.	87.6	88.4	91.0	-0.8	-3.4	-0.9%	-3.7%
Financial Investments and Vehicles	17.9	17.7	17.4	0.2	0.5	1.1%	2.9%
Insurance Carriers	63.5	62.2	62.8	1.3	0.7	2.1%	1.1%
Real Estate and Rental and Leasing	45.7	44.4	43.7	1.3	2.0	2.9%	4.6%
Professional and Business Services	379.7	377.3	365.0	2.4	14.7	0.6%	4.0%
Professional, Scientific and Technical Services	149.0	146.9	136.6	2.1	12.4	1.4%	9.1%
Management of Companies and Enterprises	33.6	33.3	30.8	0.3	2.8	0.9%	9.1%
Administrative and Waste Services	197.1	197.1	197.6	0.0	-0.5	0.0%	-0.3%
Employment Services	89.4	88.8	89.5	0.6	-0.1	0.7%	-0.1%
Business Support Services	22.4	22.6	24.1	-0.2	-1.7	-0.9%	-7.1%
Services to Buildings and Dwellings	33.4	34.0	35.7	-0.6	-2.3	-1.8%	-6.4%
Education and Health Services	357.1	358.6	337.6	-1.5	19.5	-0.4%	5.8%
Educational Services	53.6	58.4	48.4	-4.8	5.2	-8.2%	10.7%
Health Care and Social Assistance	303.5	300.2	289.2	3.3	14.3	1.1%	4.9%
Health Care	255.6	252.7	242.7	2.9	12.9	1.1%	5.3%
Ambulatory Health Care Services	148.6	147.2	139.6	1.4	9.0	1.0%	6.4%
Hospitals	68.6	67.6	65.8	1.0	2.8	1.5%	4.3%
Nursing and Residential Care Facilities	38.4	37.9	37.3	0.5	1.1	1.3%	2.9%
Social Assistance	47.9	47.5	46.5	0.4	1.4	0.8%	3.0%
Leisure and Hospitality	230.7	232.0	214.1	-1.3	16.6	-0.6%	7.8%
Arts, Entertainment and Recreation	34.5	34.2	30.3	0.3	4.2	0.9%	13.9%
Accommodation and Food Services	196.2	197.8	183.8	-1.6	12.4	-0.8%	6.7%
Accommodation	20.2	20.1	19.0	0.1	1.2	0.5%	6.3%
Food Services and Drinking Places	176.0	177.7	164.8	-1.7	11.2	-1.0%	6.8%
Other Services (except Public Administration)	70.6	71.7	68.3	-1.1	2.3	-1.5%	3.4%
Government	218.3	239.2	221.5	-20.9	-3.2	-8.7%	-1.4%
Federal Government	23.9	24.0	24.1	-0.1	-0.2	-0.4%	-0.8%
State Government	44.3	50.3	46.6	-6.0	-2.3	-11.9%	-4.9%
State Government Education	18.8	24.6	19.9	-5.8	-1.1	-23.6%	-5.5%
Local Government	150.1	164.9	150.8	-14.8	-0.7	-9.0%	-0.5%
Local Government Education	70.2	87.3	70.6	-17.1	-0.4	-19.6%	-0.6%

Note: 1) Phoenix-Mesa-Scottsdale Metropolitan Area includes Maricopa and Pinal counties. For other notes and source, see end of Table 2

Table 2 (Cont.)

Nonfarm Payroll Employment

(in Thousands, Not Seasonally Adjusted)

TUCSON MSA ³				Amount Change		Percent Change	
	June 2022(b)	May 2022(c)	June 2021(c)	Monthly	Over-Year	Monthly	Over-Year
				May '22 - June '22	June '21 - June '22	May '22 - June '22	June '21 - June '22
Total Nonfarm Payroll Employment^(c,d)	380.0	389.7	369.9	-9.7	10.1	-2.5%	2.7%
Private Sector	313.3	313.1	303.0	0.2	10.3	0.1%	3.4%
Government	66.7	76.6	66.9	-9.9	-0.2	-12.9%	-0.3%
Goods-Producing Industries	49.0	48.1	47.5	0.9	1.5	1.9%	3.2%
Manufacturing	29.1	28.2	27.6	0.9	1.5	3.2%	5.4%
Aerospace Products and Parts	14.5	14.2	13.9	0.3	0.6	2.1%	4.3%
Natural Resources and Mining	1.8	1.8	1.8	0.0	0.0	0.0%	0.0%
Construction	18.1	18.1	18.1	0.0	0.0	0.0%	0.0%
Specialty Trades	13.1	13.1	13.3	0.0	-0.2	0.0%	-1.5%
Service-Providing Industries	331.0	341.6	322.4	-10.6	8.6	-3.1%	2.7%
Private Service Providing	264.3	265.0	255.5	-0.7	8.8	-0.3%	3.4%
Trade, Transportation and Utilities	69.4	69.3	66.9	0.1	2.5	0.1%	3.7%
Trade	48.7	48.7	48.4	0.0	0.3	0.0%	0.6%
Wholesale Trade	7.6	7.6	7.1	0.0	0.5	0.0%	7.0%
Retail Trade	41.1	41.1	41.3	0.0	-0.2	0.0%	-0.5%
General Merchandise	8.6	8.7	8.4	-0.1	0.2	-1.1%	2.4%
Department Stores	2.4	2.4	2.3	0.0	0.1	0.0%	4.3%
Other General Merchandise	6.2	6.3	6.1	-0.1	0.1	-1.6%	1.6%
Food and Beverage Stores	9.3	9.3	9.5	0.0	-0.2	0.0%	-2.1%
Transportation, Warehousing and Utilities	20.7	20.6	18.5	0.1	2.2	0.5%	11.9%
Information	5.1	5.1	4.9	0.0	0.2	0.0%	4.1%
Financial Activities	18.0	18.6	18.6	-0.6	-0.6	-3.2%	-3.2%
Professional and Business Services	43.8	44.6	46.7	-0.8	-2.9	-1.8%	-6.2%
Professional, Scientific and Technical Services	19.8	19.2	19.0	0.6	0.8	3.1%	4.2%
Administrative and Waste Services	23.0	23.5	26.0	-0.5	-3.0	-2.1%	-11.5%
Employment Services	8.6	8.8	9.4	-0.2	-0.8	-2.3%	-8.5%
Business Support Services	5.7	5.8	6.7	-0.1	-1.0	-1.7%	-14.9%
Education and Health Services	70.2	70.1	66.1	0.1	4.1	0.1%	6.2%
Health Care	49.0	48.7	48.7	0.3	0.3	0.6%	0.6%
Ambulatory Health Care Services	23.1	23.0	22.5	0.1	0.6	0.4%	2.7%
Hospitals	16.5	16.4	16.6	0.1	-0.1	0.6%	-0.6%
Nursing and Residential Care Facilities	9.4	9.3	9.6	0.1	-0.2	1.1%	-2.1%
Leisure and Hospitality	43.7	43.4	39.3	0.3	4.4	0.7%	11.2%
Accommodations and Food Services	38.4	38.3	35.0	0.1	3.4	0.3%	9.7%
Accommodations	5.8	5.7	4.9	0.1	0.9	1.8%	18.4%
Food Services and Drinking Places	32.6	32.6	30.1	0.0	2.5	0.0%	8.3%
Other Services (except Public Administration)	14.1	13.9	13.0	0.2	1.1	1.4%	8.5%
Government	66.7	76.6	66.9	-9.9	-0.2	-12.9%	-0.3%
Federal Government	12.7	12.7	12.8	0.0	-0.1	0.0%	-0.8%
State Government	19.2	24.8	19.2	-5.6	0.0	-22.6%	0.0%
State Government Education	14.9	20.5	14.4	-5.6	0.5	-27.3%	3.5%
Local Government	34.8	39.1	34.9	-4.3	-0.1	-11.0%	-0.3%
Local Government Education	16.5	20.5	17.4	-4.0	-0.9	-19.5%	-5.2%

Note: 3) Tucson Metropolitan Area includes all of Pima County. For other notes and source, see end of Table 2.

Table 2 (Cont.)

Nonfarm Payroll Employment

(in Thousands, Not Seasonally Adjusted)

YUMA MSA ⁴	June 2022(b)	May 2022(c)	June 2021(c)	Amount Change		Percent Change	
				Monthly	Over-Year	Monthly	Over-Year
				May '22 - June '22	June '21 - June '22	May '22 - June '22	June '21 - June '22
Total Nonfarm Payroll Employment^(c,d)	58.8	59.6	55.6	-0.8	3.2	-1.3%	5.8%
Private Sector	44.9	45.2	42.3	-0.3	2.6	-0.7%	6.1%
Government	13.9	14.4	13.3	-0.5	0.6	-3.5%	4.5%
Goods-Producing Industries	6.4	6.3	5.9	0.1	0.5	1.6%	8.5%
Manufacturing	2.7	2.7	2.5	0.0	0.2	0.0%	8.0%
Natural Resources and Construction	3.7	3.6	3.4	0.1	0.3	2.8%	8.8%
Service-Providing Industries	52.4	53.3	49.7	-0.9	2.7	-1.7%	5.4%
Private Service Providing	38.5	38.9	36.4	-0.4	2.1	-1.0%	5.8%
Trade, Transportation and Utilities	12.4	12.6	11.5	-0.2	0.9	-1.6%	7.8%
Information	0.3	0.3	0.3	0.0	0.0	0.0%	0.0%
Financial Activities	2.0	2.0	2.0	0.0	0.0	0.0%	0.0%
Professional and Business Services	6.7	6.7	6.7	0.0	0.0	0.0%	0.0%
Education and Health Services	8.7	8.7	7.8	0.0	0.9	0.0%	11.5%
Leisure and Hospitality	6.7	6.9	6.5	-0.2	0.2	-2.9%	3.1%
Other Services (except Public Administration)	1.7	1.7	1.6	0.0	0.1	0.0%	6.3%
Government	13.9	14.4	13.3	-0.5	0.6	-3.5%	4.5%
Federal Government	3.7	3.7	3.6	0.0	0.1	0.0%	2.8%
State and Local Government	10.2	10.7	9.7	-0.5	0.5	-4.7%	5.2%

Note: 4) Yuma Metropolitan Area includes all of Yuma County. For other notes and source, see end of Table 2

FLAGSTAFF MSA ⁵	June 2022(b)	May 2022(c)	June 2021(c)	Amount Change		Percent Change	
				Monthly	Over-Year	Monthly	Over-Year
				May '22 - June '22	June '21 - June '22	May '22 - June '22	June '21 - June '22
Total Nonfarm Payroll Employment^(c,d)	67.4	67.2	63.7	0.2	3.7	0.3%	5.8%
Private Sector	49.3	48.7	47.2	0.6	2.1	1.2%	4.4%
Government	18.1	18.5	16.5	-0.4	1.6	-2.2%	9.7%
Goods-Producing Industries	6.3	6.2	6.1	0.1	0.2	1.6%	3.3%
Manufacturing	3.3	3.3	3.2	0.0	0.1	0.0%	3.1%
Natural Resources and Construction	3.0	2.9	2.9	0.1	0.1	3.4%	3.4%
Service-Providing Industries	61.1	61.0	57.6	0.1	3.5	0.2%	6.1%
Private Service Providing	43.0	42.5	41.1	0.5	1.9	1.2%	4.6%
Trade, Transportation and Utilities	10.0	9.8	9.5	0.2	0.5	2.0%	5.3%
Information	0.4	0.4	0.4	0.0	0.0	0.0%	0.0%
Financial Activities	1.6	1.7	1.6	-0.1	0.0	-5.9%	0.0%
Professional and Business Services	3.9	3.9	3.6	0.0	0.3	0.0%	8.3%
Education and Health Services	8.9	8.9	8.9	0.0	0.0	0.0%	0.0%
Leisure and Hospitality	16.4	16.0	15.4	0.4	1.0	2.5%	6.5%
Other Services (except Public Administration)	1.8	1.8	1.7	0.0	0.1	0.0%	5.9%
Government	18.1	18.5	16.5	-0.4	1.6	-2.2%	9.7%
Federal Government	2.8	2.8	2.9	0.0	-0.1	0.0%	-3.4%
State and Local Government	15.3	15.7	13.6	-0.4	1.7	-2.5%	12.5%

Notes: 5) Flagstaff Metropolitan Area includes all of Coconino County. For other notes and source, see end of Table 2

Table 2 (Cont.)

Nonfarm Payroll Employment

(in Thousands, Not Seasonally Adjusted)

PRESCOTT MSA ⁶	June 2022(b)	May 2022(c)	June 2021(c)	Amount Change		Percent Change	
				Monthly	Over-Year	Monthly	Over-Year
				May '22 - June '22	June '21 - June '22	May '22 - June '22	June '21 - June '22
Total Nonfarm Payroll Employment^(c,d)	67.5	68.5	65.3	-1.0	2.2	-1.5%	3.4%
Private Sector	57.6	57.6	55.6	0.0	2.0	0.0%	3.6%
Government	9.9	10.9	9.7	-1.0	0.2	-9.2%	2.1%
Goods-Producing Industries	11.0	10.9	10.5	0.1	0.5	0.9%	4.8%
Manufacturing	4.0	4.0	3.8	0.0	0.2	0.0%	5.3%
Natural Resources and Construction	7.0	6.9	6.7	0.1	0.3	1.4%	4.5%
Service-Providing Industries	56.5	57.6	54.8	-1.1	1.7	-1.9%	3.1%
Private Service Providing	46.6	46.7	45.1	-0.1	1.5	-0.2%	3.3%
Trade, Transportation and Utilities	13.6	13.5	13.2	0.1	0.4	0.7%	3.0%
Information	0.4	0.4	0.4	0.0	0.0	0.0%	0.0%
Financial Activities	2.5	2.5	2.5	0.0	0.0	0.0%	0.0%
Professional and Business Services	5.0	5.0	4.9	0.0	0.1	0.0%	2.0%
Education and Health Services	12.2	12.2	11.6	0.0	0.6	0.0%	5.2%
Leisure and Hospitality	10.5	10.7	10.1	-0.2	0.4	-1.9%	4.0%
Other Services (except Public Administration)	2.4	2.4	2.4	0.0	0.0	0.0%	0.0%
Government	9.9	10.9	9.7	-1.0	0.2	-9.2%	2.1%
Federal Government	1.6	1.6	1.6	0.0	0.0	0.0%	0.0%
State and Local Government	8.3	9.3	8.1	-1.0	0.2	-10.8%	2.5%

Note: 6) Prescott Metropolitan Area includes all of Yavapai County. For other notes and source, see end of Table 2

LAKE HAVASU CITY-KINGMAN MSA⁷

LAKE HAVASU CITY-KINGMAN MSA ⁷	June 2022(b)	May 2022(c)	June 2021(c)	Amount Change		Percent Change	
				Monthly	Over-Year	Monthly	Over-Year
				May '22 - June '22	June '21 - June '22	May '22 - June '22	June '21 - June '22
Total Nonfarm Payroll Employment^(c,d)	55.2	55.1	53.2	0.1	2.0	0.2%	3.8%
Private Sector	47.5	47.3	45.7	0.2	1.8	0.4%	3.9%
Government	7.7	7.8	7.5	-0.1	0.2	-1.3%	2.7%
Goods-Producing Industries	7.5	7.4	7.1	0.1	0.4	1.4%	5.6%
Manufacturing	3.1	3.0	2.9	0.1	0.2	3.3%	6.9%
Natural Resources and Construction	4.4	4.4	4.2	0.0	0.2	0.0%	4.8%
Service-Providing Industries	47.7	47.7	46.1	0.0	1.6	0.0%	3.5%
Private Service Providing	40.0	39.9	38.6	0.1	1.4	0.3%	3.6%
Trade, Transportation and Utilities	13.7	13.6	13.5	0.1	0.2	0.7%	1.5%
Information	0.4	0.4	0.4	0.0	0.0	0.0%	0.0%
Financial Activities	2.1	2.1	2.2	0.0	-0.1	0.0%	-4.5%
Professional and Business Services	4.1	4.0	3.8	0.1	0.3	2.5%	7.9%
Education and Health Services	9.3	9.3	8.9	0.0	0.4	0.0%	4.5%
Leisure and Hospitality	8.4	8.5	7.9	-0.1	0.5	-1.2%	6.3%
Other Services (except Public Administration)	2.0	2.0	1.9	0.0	0.1	0.0%	5.3%
Government	7.7	7.8	7.5	-0.1	0.2	-1.3%	2.7%
Federal Government	0.5	0.5	0.5	0.0	0.0	0.0%	0.0%
State and Local Government	7.2	7.3	7.0	-0.1	0.2	-1.4%	2.9%

Note: 7) Lake Havasu City-Kingman Metropolitan Area includes all of Mohave County
For other notes and source, see next page

Table 2 (Cont.)

Nonfarm Payroll Employment

(in Thousands, Not Seasonally Adjusted)

SIERRA VISTA-DOUGLAS MSA⁸

				Amount Change		Percent Change	
	June	May	June	Monthly	Over-Year	Monthly	Over-Year
	2022(b)	2022(c)	2021(c)	May '22 - June '22	June '21 - June '22	May '22 - June '22	June '21 - June '22
Total Nonfarm Payroll Employment^(c,d)	34.1	34.2	33.2	-0.1	0.9	-0.3%	2.7%
Private Sector	24.0	23.8	22.8	0.2	1.2	0.8%	5.3%
Government	10.1	10.4	10.4	-0.3	-0.3	-2.9%	-2.9%
Goods-Producing Industries	2.9	2.8	2.6	0.1	0.3	3.6%	11.5%
Manufacturing	0.8	0.8	0.7	0.0	0.1	0.0%	14.3%
Natural Resources and Construction	2.1	2.0	1.9	0.1	0.2	5.0%	10.5%
Service-Providing Industries	31.2	31.4	30.6	-0.2	0.6	-0.6%	2.0%
Private Service Providing	21.1	21.0	20.2	0.1	0.9	0.5%	4.5%
Trade, Transportation and Utilities	6.3	6.2	6.2	0.1	0.1	1.6%	1.6%
Information	0.5	0.5	0.3	0.0	0.2	0.0%	66.7%
Financial Activities	0.9	0.9	0.8	0.0	0.1	0.0%	12.5%
Professional and Business Services	4.5	4.5	4.5	0.0	0.0	0.0%	0.0%
Education and Health Services	4.4	4.4	4.2	0.0	0.2	0.0%	4.8%
Leisure and Hospitality	3.7	3.7	3.5	0.0	0.2	0.0%	5.7%
Other Services (except Public Administration)	0.8	0.8	0.7	0.0	0.1	0.0%	14.3%
Government	10.1	10.4	10.4	-0.3	-0.3	-2.9%	-2.9%
Federal Government	4.7	4.6	4.8	0.1	-0.1	2.2%	-2.1%
State and Local Government	5.4	5.8	5.6	-0.4	-0.2	-6.9%	-3.6%

Note: 8) Sierra Vista Douglas Metropolitan Area includes all of Cochise County

Other notes and sources:

- a) Nonfarm employment at the state and substate level is produced from the monthly establishment survey by the Current Employment Statistics (CES) program of the Arizona Office of Employment and Population Statistics, in cooperation with U.S. Dept. of Labor, Bureau of Labor Statistics.

For more information on the establishment survey, see: <http://www.bls.gov/bls/empsitquickguide.htm>

- b) Preliminary and subject to revision the following month
 c) Revised
 d) By place of work; does not include agricultural workers, self-employed, unpaid family members, and domestic workers
 e) Detail may not add up exactly due to rounding
 MSA — Metropolitan Statistical Area
 NA — Not Available

Source: Prepared by the Arizona Office of Economic Opportunity, in cooperation with the U.S. Dept. of Labor, Bureau of Labor Statistics

Labor Force

Prepared in Cooperation with the U.S. Department of Labor, Bureau of Labor Statistics

Arizona Office of Economic Opportunity

2022

Apache County

	JAN	FEB	MAR	APR	MAY	JUN	JUL	AUG	SEP	OCT	NOV	DEC	AVG
Civilian Labor Force	18,736	18,729	18,627	18,296	18,335	18,151							
Employment	17,241	17,233	17,428	16,987	16,951	16,449							
Unemployment	1,495	1,496	1,199	1,309	1,384	1,702							
Unemployment rate	8.0	8.0	6.4	7.2	7.5	9.4							

Adjusted to the Current Population Survey (CPS 2022) to reflect place of residence

Equal Opportunity Employer/ Program available in alternative format/ reasonable accommodations: 602-771-1110, TDD 1-800-367-8939

Labor Force

Prepared in Cooperation with the U.S. Department of Labor, Bureau of Labor Statistics

Arizona Office of Economic Opportunity

2022

Cochise County(Sierra-Vista Douglas MSA)

	JAN	FEB	MAR	APR	MAY	JUN	JUL	AUG	SEP	OCT	NOV	DEC	AVG
Civilian Labor Force	49,514	49,781	49,561	48,611	48,478	48,872							
Employment	47,610	47,895	48,093	46,951	46,703	46,767							
Unemployment	1,904	1,886	1,468	1,660	1,775	2,105							
Unemployment rate	3.8	3.8	3.0	3.4	3.7	4.3							

Adjusted to the Current Population Survey (CPS 2022) to reflect place of residence

Equal Opportunity Employer/ Program available in alternative format/ reasonable accommodations: 602-771-1110, TDD 1-800-367-8939

Labor Force

Prepared in Cooperation with the U.S. Department of Labor, Bureau of Labor Statistics

Arizona Office of Economic Opportunity

2022

Coconino County(Flagstaff MSA)

	JAN	FEB	MAR	APR	MAY	JUN	JUL	AUG	SEP	OCT	NOV	DEC	AVG
Civilian Labor Force	74,297	74,610	74,729	74,593	74,157	75,356							
Employment	70,684	71,093	71,994	71,648	71,056	71,714							
Unemployment	3,613	3,517	2,735	2,945	3,101	3,642							
Unemployment rate	4.9	4.7	3.7	3.9	4.2	4.8							

Adjusted to the Current Population Survey (CPS 2022) to reflect place of residence

Equal Opportunity Employer/ Program available in alternative format/ reasonable accommodations: 602-771-1110, TDD 1-800-367-8939

Labor Force

Prepared in Cooperation with the U.S. Department of Labor, Bureau of Labor Statistics

Arizona Office of Economic Opportunity

2022

Gila County

	JAN	FEB	MAR	APR	MAY	JUN	JUL	AUG	SEP	OCT	NOV	DEC	AVG
Civilian Labor Force	20,396	20,343	20,468	19,983	20,303	20,391							
Employment	19,631	19,570	19,865	19,300	19,577	19,508							
Unemployment	765	773	603	683	726	883							
Unemployment rate	3.8	3.8	2.9	3.4	3.6	4.3							

Adjusted to the Current Population Survey (CPS 2022) to reflect place of residence

Equal Opportunity Employer/ Program available in alternative format/ reasonable accommodations: 602-771-1110, TDD 1-800-367-8939

Labor Force

Prepared in Cooperation with the U.S. Department of Labor, Bureau of Labor Statistics

Arizona Office of Economic Opportunity

2022

Graham County

	JAN	FEB	MAR	APR	MAY	JUN	JUL	AUG	SEP	OCT	NOV	DEC	AVG
Civilian Labor Force	15,700	16,150	16,236	15,986	16,011	15,648							
Employment	15,226	15,672	15,870	15,574	15,538	15,091							
Unemployment	474	478	366	412	473	557							
Unemployment rate	3.0	3.0	2.3	2.6	3.0	3.6							

Adjusted to the Current Population Survey (CPS 2022) to reflect place of residence

Equal Opportunity Employer/ Program available in alternative format/ reasonable accommodations: 602-771-1110, TDD 1-800-367-8939

Labor Force

Prepared in Cooperation with the U.S. Department of Labor, Bureau of Labor Statistics

Arizona Office of Economic Opportunity

2022

Greenlee County

	JAN	FEB	MAR	APR	MAY	JUN	JUL	AUG	SEP	OCT	NOV	DEC	AVG
Civilian Labor Force	4,430	4,419	4,440	4,405	4,426	4,436							
Employment	4,307	4,297	4,347	4,298	4,313	4,302							
Unemployment	123	122	93	107	113	134							
Unemployment rate	2.8	2.8	2.1	2.4	2.6	3.0							

Adjusted to the Current Population Survey (CPS 2022) to reflect place of residence

Equal Opportunity Employer/ Program available in alternative format/ reasonable accommodations: 602-771-1110, TDD 1-800-367-8939

Labor Force

Prepared in Cooperation with the U.S. Department of Labor, Bureau of Labor Statistics

Arizona Office of Economic Opportunity

2022

La Paz County

	JAN	FEB	MAR	APR	MAY	JUN	JUL	AUG	SEP	OCT	NOV	DEC	AVG
Civilian Labor Force	9,371	9,361	9,515	8,355	8,153	8,295							
Employment	9,023	8,999	9,221	8,009	7,791	7,856							
Unemployment	348	362	294	346	362	439							
Unemployment rate	3.7	3.9	3.1	4.1	4.4	5.3							

Adjusted to the Current Population Survey (CPS 2022) to reflect place of residence

Equal Opportunity Employer/ Program available in alternative format/ reasonable accommodations: 602-771-1110, TDD 1-800-367-8939

Labor Force

Prepared in Cooperation with the U.S. Department of Labor, Bureau of Labor Statistics

Arizona Office of Economic Opportunity

2022

Maricopa County

	JAN	FEB	MAR	APR	MAY	JUN	JUL	AUG	SEP	OCT	NOV	DEC	AVG
Civilian Labor Force	2,330,711	2,342,268	2,334,867	2,337,663	2,355,279	2,362,965							
Employment	2,257,459	2,269,709	2,278,791	2,275,433	2,288,334	2,283,734							
Unemployment	73,252	72,559	56,076	62,230	66,945	79,231							
Unemployment rate	3.1	3.1	2.4	2.7	2.8	3.4							

Adjusted to the Current Population Survey (CPS 2022) to reflect place of residence

Equal Opportunity Employer/ Program available in alternative format/ reasonable accommodations: 602-771-1110, TDD 1-800-367-8939

Labor Force

Prepared in Cooperation with the U.S. Department of Labor, Bureau of Labor Statistics

Arizona Office of Economic Opportunity

2022

Mohave County(Lake Havasu City-Kingman MSA)

	JAN	FEB	MAR	APR	MAY	JUN	JUL	AUG	SEP	OCT	NOV	DEC	AVG
Civilian Labor Force	88,307	89,513	88,698	89,100	89,431	90,650							
Employment	84,418	85,576	85,600	85,636	85,906	86,416							
Unemployment	3,889	3,937	3,098	3,464	3,525	4,234							
Unemployment rate	4.4	4.4	3.5	3.9	3.9	4.7							

Adjusted to the Current Population Survey (CPS 2022) to reflect place of residence

Equal Opportunity Employer/ Program available in alternative format/ reasonable accommodations: 602-771-1110, TDD 1-800-367-8939

Labor Force

Prepared in Cooperation with the U.S. Department of Labor, Bureau of Labor Statistics

Arizona Office of Economic Opportunity

2022

Navajo County

	JAN	FEB	MAR	APR	MAY	JUN	JUL	AUG	SEP	OCT	NOV	DEC	AVG
Civilian Labor Force	38,925	38,949	39,104	38,595	39,421	39,889							
Employment	36,793	36,852	37,440	36,770	37,514	37,517							
Unemployment	2,132	2,097	1,664	1,825	1,907	2,372							
Unemployment rate	5.5	5.4	4.3	4.7	4.8	5.9							

Adjusted to the Current Population Survey (CPS 2022) to reflect place of residence

Equal Opportunity Employer/ Program available in alternative format/ reasonable accommodations: 602-771-1110, TDD 1-800-367-8939

Labor Force

Prepared in Cooperation with the U.S. Department of Labor, Bureau of Labor Statistics

Arizona Office of Economic Opportunity

2022

Pima County(Tucson MSA)

	JAN	FEB	MAR	APR	MAY	JUN	JUL	AUG	SEP	OCT	NOV	DEC	AVG
Civilian Labor Force	486,098	488,609	486,744	487,495	488,698	483,045							
Employment	468,617	471,210	473,180	472,269	472,437	463,898							
Unemployment	17,481	17,399	13,564	15,226	16,261	19,147							
Unemployment rate	3.6	3.6	2.8	3.1	3.3	4.0							

Adjusted to the Current Population Survey (CPS 2022) to reflect place of residence

Equal Opportunity Employer/ Program available in alternative format/ reasonable accommodations: 602-771-1110, TDD 1-800-367-8939

Labor Force

Prepared in Cooperation with the U.S. Department of Labor, Bureau of Labor Statistics

Arizona Office of Economic Opportunity

2022

Pinal County

	JAN	FEB	MAR	APR	MAY	JUN	JUL	AUG	SEP	OCT	NOV	DEC	AVG
Civilian Labor Force	196,222	197,023	196,826	193,762	194,128	195,167							
Employment	189,437	190,230	191,539	187,796	187,719	187,497							
Unemployment	6,785	6,793	5,287	5,966	6,409	7,670							
Unemployment rate	3.5	3.4	2.7	3.1	3.3	3.9							

Adjusted to the Current Population Survey (CPS 2022) to reflect place of residence

Equal Opportunity Employer/ Program available in alternative format/ reasonable accommodations: 602-771-1110, TDD 1-800-367-8939

Labor Force

Prepared in Cooperation with the U.S. Department of Labor, Bureau of Labor Statistics

Arizona Office of Economic Opportunity

2022

Santa Cruz County

	JAN	FEB	MAR	APR	MAY	JUN	JUL	AUG	SEP	OCT	NOV	DEC	AVG
Civilian Labor Force	19,660	19,606	19,517	18,825	19,068	19,067							
Employment	18,223	18,220	18,373	17,589	17,825	17,536							
Unemployment	1,437	1,386	1,144	1,236	1,243	1,531							
Unemployment rate	7.3	7.1	5.9	6.6	6.5	8.0							

Adjusted to the Current Population Survey (CPS 2022) to reflect place of residence

Equal Opportunity Employer/ Program available in alternative format/ reasonable accommodations: 602-771-1110, TDD 1-800-367-8939

Labor Force

Prepared in Cooperation with the U.S. Department of Labor, Bureau of Labor Statistics

Arizona Office of Economic Opportunity

2022

Yavapai County(Prescott MSA)

	JAN	FEB	MAR	APR	MAY	JUN	JUL	AUG	SEP	OCT	NOV	DEC	AVG
Civilian Labor Force	106,233	107,008	106,883	106,451	107,352	107,441							
Employment	103,114	103,839	104,450	103,681	104,363	103,787							
Unemployment	3,119	3,169	2,433	2,770	2,989	3,654							
Unemployment rate	2.9	3.0	2.3	2.6	2.8	3.4							

Adjusted to the Current Population Survey (CPS 2022) to reflect place of residence

Equal Opportunity Employer/ Program available in alternative format/ reasonable accommodations: 602-771-1110, TDD 1-800-367-8939

Labor Force

Prepared in Cooperation with the U.S. Department of Labor, Bureau of Labor Statistics

Arizona Office of Economic Opportunity

2022

Yuma County(Yuma MSA)

	JAN	FEB	MAR	APR	MAY	JUN	JUL	AUG	SEP	OCT	NOV	DEC	AVG
Civilian Labor Force	100,026	99,333	98,905	94,921	94,384	97,432							
Employment	87,602	87,487	88,906	82,480	80,820	80,654							
Unemployment	12,424	11,846	9,999	12,441	13,564	16,778							
Unemployment rate	12.4	11.9	10.1	13.1	14.4	17.2							

Adjusted to the Current Population Survey (CPS 2022) to reflect place of residence

Equal Opportunity Employer/ Program available in alternative format/ reasonable accommodations: 602-771-1110, TDD 1-800-367-8939

Nonfarm Employment

Prepared in Cooperation with the U.S. Department of Labor, Bureau of Labor Statistics

Arizona Office of Economic Opportunity

2022

Apache County

	JAN	FEB	MAR	APR	MAY	JUN	JUL	AUG	SEP	OCT	NOV	DEC	AVG
Total Nonfarm	16,800	16,875	16,925	16,875	16,800	16,200							
Total Private	7,175	7,200	7,250	7,250	7,300	7,400							
Goods Producing	725	725	750	775	750	750							
Service-Providing	16,075	16,150	16,175	16,100	16,050	15,450							
Private Service-Providing	6,450	6,475	6,500	6,475	6,550	6,650							
Trade, Transportation, and Utilities	2,050	2,050	2,075	2,100	2,125	2,175							
Other Private Service-Providing	4,400	4,425	4,425	4,375	4,425	4,475							
Government	9,625	9,675	9,675	9,625	9,500	8,800							
Federal Government	2,575	2,625	2,625	2,675	2,700	2,725							
State and Local Government	7,050	7,050	7,050	6,950	6,800	6,075							

Benchmark year 2021, quarter 1, rev. 7/15/2022

Equal Opportunity Employer/ Program available in alternative format/ reasonable accommodations: 602-771-1110, TDD 1-800-367-8939

Nonfarm Employment

Prepared in Cooperation with the U.S. Department of Labor, Bureau of Labor Statistics

Arizona Office of Economic Opportunity

2022

Cochise County(Sierra-Vista Douglas MSA)

	JAN	FEB	MAR	APR	MAY	JUN	JUL	AUG	SEP	OCT	NOV	DEC	AVG
Total Nonfarm	33,900	34,200	34,000	34,200	34,200	34,100							
Total Private	23,600	23,800	23,600	23,700	23,800	24,000							
Goods Producing	2,700	2,700	2,700	2,700	2,800	2,900							
Mining and Construction	2,000	2,000	2,000	2,000	2,000	2,100							
Manufacturing	700	700	700	700	800	800							
Service-Providing	31,200	31,500	31,300	31,500	31,400	31,200							
Private Service-Providing	20,900	21,100	20,900	21,000	21,000	21,100							
Trade, Transportation, and Utilities	6,500	6,500	6,400	6,400	6,200	6,300							
Information	500	500	500	500	500	500							
Financial Activities	900	900	900	900	900	900							
Professional and Business Services	4,500	4,500	4,500	4,500	4,500	4,500							
Educational and Health Services	4,300	4,400	4,300	4,400	4,400	4,400							
Leisure and Hospitality	3,500	3,600	3,600	3,600	3,700	3,700							
Other Services	700	700	700	700	800	800							
Government	10,300	10,400	10,400	10,500	10,400	10,100							
Federal Government	4,600	4,600	4,600	4,600	4,600	4,700							
State and Local Government	5,700	5,800	5,800	5,900	5,800	5,400							

Benchmark year 2021, quarter 1, rev. 7/15/2022

Equal Opportunity Employer/ Program available in alternative format/ reasonable accommodations: 602-771-1110, TDD 1-800-367-8939

Nonfarm Employment

Prepared in Cooperation with the U.S. Department of Labor, Bureau of Labor Statistics

Arizona Office of Economic Opportunity

2022

Coconino County(Flagstaff MSA)

	JAN	FEB	MAR	APR	MAY	JUN	JUL	AUG	SEP	OCT	NOV	DEC	AVG
Total Nonfarm	66,100	66,800	67,200	67,900	67,200	67,400							
Total Private	47,100	47,700	48,000	48,600	48,700	49,300							
Goods Producing	6,000	6,000	6,000	6,100	6,200	6,300							
Mining and Construction	2,800	2,800	2,800	2,900	2,900	3,000							
Manufacturing	3,200	3,200	3,200	3,200	3,300	3,300							
Service-Providing	60,100	60,800	61,200	61,800	61,000	61,100							
Private Service-Providing	41,100	41,700	42,000	42,500	42,500	43,000							
Trade, Transportation, and Utilities	9,900	9,900	10,000	9,900	9,800	10,000							
Information	400	400	400	400	400	400							
Financial Activities	1,700	1,700	1,700	1,700	1,700	1,600							
Professional and Business Services	3,800	3,900	3,900	3,900	3,900	3,900							
Educational and Health Services	8,700	8,900	8,900	9,000	8,900	8,900							
Leisure and Hospitality	14,900	15,200	15,400	15,900	16,000	16,400							
Other Services	1,700	1,700	1,700	1,700	1,800	1,800							
Government	19,000	19,100	19,200	19,300	18,500	18,100							
Federal Government	2,400	2,400	2,400	2,600	2,800	2,800							
State and Local Government	16,600	16,700	16,800	16,700	15,700	15,300							

Benchmark year 2021, quarter 1, rev. 7/15/2022

Equal Opportunity Employer/ Program available in alternative format/ reasonable accommodations: 602-771-1110, TDD 1-800-367-8939

Nonfarm Employment

Prepared in Cooperation with the U.S. Department of Labor, Bureau of Labor Statistics

Arizona Office of Economic Opportunity

2022

Gila County

	JAN	FEB	MAR	APR	MAY	JUN	JUL	AUG	SEP	OCT	NOV	DEC	AVG
Total Nonfarm	14,450	14,500	14,600	14,550	14,750	14,625							
Total Private	9,325	9,325	9,400	9,300	9,500	9,550							
Goods Producing	2,775	2,750	2,775	2,775	2,800	2,800							
Service-Providing	11,675	11,750	11,825	11,775	11,950	11,825							
Private Service-Providing	6,550	6,575	6,625	6,525	6,700	6,750							
Trade, Transportation, and Utilities	2,275	2,275	2,275	2,275	2,325	2,325							
Other Private Service-Providing	4,275	4,300	4,350	4,250	4,375	4,425							
Government	5,125	5,175	5,200	5,250	5,250	5,075							
Federal Government	175	200	200	250	250	250							
State and Local Government	4,950	4,975	5,000	5,000	5,000	4,825							

Benchmark year 2021, quarter 1, rev. 7/15/2022

Equal Opportunity Employer/ Program available in alternative format/ reasonable accommodations: 602-771-1110, TDD 1-800-367-8939

Nonfarm Employment

Prepared in Cooperation with the U.S. Department of Labor, Bureau of Labor Statistics

Arizona Office of Economic Opportunity

2022

Graham County

	JAN	FEB	MAR	APR	MAY	JUN	JUL	AUG	SEP	OCT	NOV	DEC	AVG
Total Nonfarm	9,675	10,025	10,100	10,050	10,000	9,675							
Total Private	7,025	7,125	7,175	7,125	7,175	7,200							
Goods Producing	1,950	2,000	2,025	2,000	2,025	2,050							
Service-Providing	7,725	8,025	8,075	8,050	7,975	7,625							
Private Service-Providing	5,075	5,125	5,150	5,125	5,150	5,150							
Trade, Transportation, and Utilities	1,900	1,900	1,925	1,925	1,925	1,925							
Other Private Service-Providing	3,175	3,225	3,225	3,200	3,225	3,225							
Government	2,650	2,900	2,925	2,925	2,825	2,475							
Federal Government	375	375	375	375	375	400							
State and Local Government	2,275	2,525	2,550	2,550	2,450	2,075							

Benchmark year 2021, quarter 1, rev. 7/15/2022

Equal Opportunity Employer/ Program available in alternative format/ reasonable accommodations: 602-771-1110, TDD 1-800-367-8939

Nonfarm Employment

Prepared in Cooperation with the U.S. Department of Labor, Bureau of Labor Statistics

Arizona Office of Economic Opportunity

2022

Greenlee County

	JAN	FEB	MAR	APR	MAY	JUN	JUL	AUG	SEP	OCT	NOV	DEC	AVG
Total Nonfarm	5,125	5,175	5,200	5,200	5,225	5,175							
Total Private	4,550	4,575	4,625	4,625	4,650	4,625							
Goods Producing	3,625	3,650	3,675	3,700	3,700	3,675							
Service-Providing	1,500	1,525	1,525	1,500	1,525	1,500							
Private Service-Providing	925	925	950	925	950	950							
Trade, Transportation, and Utilities	550	550	575	550	575	575							
Other Private Service-Providing	375	375	375	375	375	375							
Government	575	600	575	575	575	550							
Federal Government	25	25	25	25	25	25							
State and Local Government	550	575	550	550	550	525							

Benchmark year 2021, quarter 1, rev. 7/15/2022

Equal Opportunity Employer/ Program available in alternative format/ reasonable accommodations: 602-771-1110, TDD 1-800-367-8939

Nonfarm Employment

Prepared in Cooperation with the U.S. Department of Labor, Bureau of Labor Statistics

Arizona Office of Economic Opportunity

2022

La Paz County

	JAN	FEB	MAR	APR	MAY	JUN	JUL	AUG	SEP	OCT	NOV	DEC	AVG
Total Nonfarm	5,600	5,625	5,625	5,550	5,600	5,550							
Total Private	3,600	3,625	3,650	3,575	3,625	3,675							
Goods Producing	350	350	375	400	375	375							
Service-Providing	5,250	5,275	5,250	5,150	5,225	5,175							
Private Service-Providing	3,250	3,275	3,275	3,175	3,250	3,300							
Trade, Transportation, and Utilities	1,825	1,825	1,825	1,800	1,825	1,825							
Other Private Service-Providing	1,425	1,450	1,450	1,375	1,425	1,475							
Government	2,000	2,000	1,975	1,975	1,975	1,875							
Federal Government	325	325	325	325	325	325							
State and Local Government	1,675	1,675	1,650	1,650	1,650	1,550							

Benchmark year 2021, quarter 1, rev. 7/15/2022

Equal Opportunity Employer/ Program available in alternative format/ reasonable accommodations: 602-771-1110, TDD 1-800-367-8939

Nonfarm Employment

Prepared in Cooperation with the U.S. Department of Labor, Bureau of Labor Statistics

Arizona Office of Economic Opportunity

2022

Maricopa County

	JAN	FEB	MAR	APR	MAY	JUN	JUL	AUG	SEP	OCT	NOV	DEC	AVG
Total Nonfarm	2,185,200	2,204,400	2,201,100	2,209,800	2,207,300	2,194,300							
Total Private	1,963,500	1,980,400	1,977,500	1,984,900	1,987,400	1,994,000							
Goods Producing	272,300	276,300	276,900	277,100	278,400	283,000							
Mining and Construction	137,600	140,000	140,900	139,900	140,400	143,100							
Manufacturing	134,700	136,300	136,000	137,200	138,000	139,900							
Service-Providing	1,912,900	1,928,100	1,924,200	1,932,700	1,928,900	1,911,300							
Private Service-Providing	1,691,200	1,704,100	1,700,600	1,707,800	1,709,000	1,711,000							
Trade, Transportation, and Utilities	444,200	444,200	444,100	440,000	437,700	438,700							
Information	40,500	40,500	39,100	41,600	42,300	42,800							
Financial Activities	212,300	213,000	211,500	211,100	210,900	212,800							
Professional and Business Services	368,300	373,400	370,900	372,500	371,100	373,600							
Educational and Health Services	340,600	345,300	347,400	349,700	352,300	351,100							
Leisure and Hospitality	217,500	218,400	218,400	223,700	224,500	223,100							
Other Services	67,800	69,300	69,200	69,200	70,200	68,900							
Government	221,700	224,000	223,600	224,900	219,900	200,300							
Federal Government	22,500	22,600	22,600	22,600	22,600	22,600							
State and Local Government	199,200	201,400	201,000	202,300	197,300	177,700							

Benchmark year 2021, quarter 1, rev. 7/15/2022

Equal Opportunity Employer/ Program available in alternative format/ reasonable accommodations: 602-771-1110, TDD 1-800-367-8939

Nonfarm Employment

Prepared in Cooperation with the U.S. Department of Labor, Bureau of Labor Statistics

Arizona Office of Economic Opportunity

2022

Mohave County(Lake Havasu City-Kingman MSA)

	JAN	FEB	MAR	APR	MAY	JUN	JUL	AUG	SEP	OCT	NOV	DEC	AVG
Total Nonfarm	54,400	55,500	54,900	55,400	55,100	55,200							
Total Private	46,700	47,600	47,300	47,500	47,300	47,500							
Goods Producing	7,200	7,300	7,200	7,300	7,400	7,500							
Mining and Construction	4,200	4,300	4,200	4,300	4,400	4,400							
Manufacturing	3,000	3,000	3,000	3,000	3,000	3,100							
Service-Providing	47,200	48,200	47,700	48,100	47,700	47,700							
Private Service-Providing	39,500	40,300	40,100	40,200	39,900	40,000							
Trade, Transportation, and Utilities	13,900	14,300	14,400	14,100	13,600	13,700							
Information	400	400	400	400	400	400							
Financial Activities	2,100	2,100	2,100	2,100	2,100	2,100							
Professional and Business Services	3,900	4,000	4,000	4,000	4,000	4,100							
Educational and Health Services	9,200	9,300	9,200	9,300	9,300	9,300							
Leisure and Hospitality	8,100	8,200	8,100	8,300	8,500	8,400							
Other Services	1,900	2,000	1,900	2,000	2,000	2,000							
Government	7,700	7,900	7,600	7,900	7,800	7,700							
Federal Government	500	500	500	500	500	500							
State and Local Government	7,200	7,400	7,100	7,400	7,300	7,200							

Benchmark year 2021, quarter 1, rev. 7/15/2022

Equal Opportunity Employer/ Program available in alternative format/ reasonable accommodations: 602-771-1110, TDD 1-800-367-8939

Nonfarm Employment

Prepared in Cooperation with the U.S. Department of Labor, Bureau of Labor Statistics

Arizona Office of Economic Opportunity

2022

Navajo County

	JAN	FEB	MAR	APR	MAY	JUN	JUL	AUG	SEP	OCT	NOV	DEC	AVG
Total Nonfarm	26,400	26,575	26,750	26,950	27,500	27,350							
Total Private	16,900	17,000	17,100	17,350	17,850	18,250							
Goods Producing	1,675	1,675	1,700	1,750	1,750	1,825							
Mining and Construction	1,375	1,375	1,400	1,450	1,450	1,500							
Manufacturing	300	300	300	300	300	325							
Service-Providing	24,725	24,900	25,050	25,200	25,750	25,525							
Private Service-Providing	15,225	15,325	15,400	15,600	16,100	16,425							
Trade, Transportation, and Utilities	5,000	5,000	5,025	5,025	5,125	5,250							
Information	175	175	150	150	150	150							
Financial Activities	575	600	600	575	575	575							
Professional and Business Services	1,300	1,325	1,325	1,350	1,375	1,375							
Educational and Health Services	4,225	4,275	4,275	4,250	4,250	4,125							
Leisure and Hospitality	3,400	3,400	3,500	3,725	4,100	4,375							
Other Services	550	550	525	525	525	575							
Government	9,500	9,575	9,650	9,600	9,650	9,100							
Federal Government	1,875	1,900	1,950	2,000	2,050	2,100							
State and Local Government	7,625	7,675	7,700	7,600	7,600	7,000							

Benchmark year 2021, quarter 1, rev. 7/15/2022

Equal Opportunity Employer/ Program available in alternative format/ reasonable accommodations: 602-771-1110, TDD 1-800-367-8939

Nonfarm Employment

Prepared in Cooperation with the U.S. Department of Labor, Bureau of Labor Statistics

Arizona Office of Economic Opportunity

2022

Pima County(Tucson MSA)

	JAN	FEB	MAR	APR	MAY	JUN	JUL	AUG	SEP	OCT	NOV	DEC	AVG
Total Nonfarm	388,300	391,500	390,600	392,500	389,700	380,000							
Total Private	312,300	314,600	313,900	314,900	313,100	313,300							
Goods Producing	47,500	47,600	48,000	47,900	48,100	49,000							
Mining and Construction	19,700	19,800	19,900	19,800	19,900	19,900							
Manufacturing	27,800	27,800	28,100	28,100	28,200	29,100							
Service-Providing	340,800	343,900	342,600	344,600	341,600	331,000							
Private Service-Providing	264,800	267,000	265,900	267,000	265,000	264,300							
Trade, Transportation, and Utilities	71,100	71,200	70,600	70,000	69,300	69,400							
Information	5,300	5,200	5,100	5,100	5,100	5,100							
Financial Activities	18,500	18,600	18,800	18,800	18,600	18,000							
Professional and Business Services	44,200	45,000	44,700	45,000	44,600	43,800							
Educational and Health Services	69,200	69,700	69,500	70,100	70,100	70,200							
Leisure and Hospitality	42,900	43,600	43,600	44,100	43,400	43,700							
Other Services	13,600	13,700	13,600	13,900	13,900	14,100							
Government	76,000	76,900	76,700	77,600	76,600	66,700							
Federal Government	12,700	12,700	12,700	12,800	12,700	12,700							
State and Local Government	63,300	64,200	64,000	64,800	63,900	54,000							

Benchmark year 2021, quarter 1, rev. 7/15/2022

Equal Opportunity Employer/ Program available in alternative format/ reasonable accommodations: 602-771-1110, TDD 1-800-367-8939

Nonfarm Employment

Prepared in Cooperation with the U.S. Department of Labor, Bureau of Labor Statistics

Arizona Office of Economic Opportunity

2022

Pinal County

	JAN	FEB	MAR	APR	MAY	JUN	JUL	AUG	SEP	OCT	NOV	DEC	AVG
Total Nonfarm	65,575	66,425	66,550	65,500	65,950	64,725							
Total Private	46,775	47,400	47,525	46,550	46,850	46,675							
Goods Producing	8,675	8,800	8,850	9,000	9,100	9,225							
Mining and Construction	3,725	3,800	3,825	3,900	3,925	3,975							
Manufacturing	4,950	5,000	5,025	5,100	5,175	5,250							
Service-Providing	56,900	57,625	57,700	56,500	56,850	55,500							
Private Service-Providing	38,100	38,600	38,675	37,550	37,750	37,450							
Trade, Transportation, and Utilities	13,700	13,775	13,800	13,650	13,725	13,725							
Information	375	375	375	375	375	375							
Financial Activities	1,875	1,900	1,925	1,900	1,850	1,850							
Professional and Business Services	6,125	6,100	6,100	6,100	6,125	6,075							
Educational and Health Services	6,450	6,500	6,500	6,425	6,425	6,075							
Leisure and Hospitality	7,850	8,225	8,300	7,450	7,575	7,600							
Other Services	1,725	1,725	1,675	1,650	1,675	1,750							
Government	18,800	19,025	19,025	18,950	19,100	18,050							
Federal Government	1,400	1,400	1,400	1,375	1,400	1,400							
State and Local Government	17,400	17,625	17,625	17,575	17,700	16,650							

Benchmark year 2021, quarter 1, rev. 7/15/2022

Equal Opportunity Employer/ Program available in alternative format/ reasonable accommodations: 602-771-1110, TDD 1-800-367-8939

Nonfarm Employment

Prepared in Cooperation with the U.S. Department of Labor, Bureau of Labor Statistics

Arizona Office of Economic Opportunity

2022

Santa Cruz County

	JAN	FEB	MAR	APR	MAY	JUN	JUL	AUG	SEP	OCT	NOV	DEC	AVG
Total Nonfarm	13,625	13,650	13,625	13,275	13,450	13,100							
Total Private	9,850	9,875	9,825	9,475	9,650	9,500							
Goods Producing	650	625	625	625	650	650							
Service-Providing	12,975	13,025	13,000	12,650	12,800	12,450							
Private Service-Providing	9,200	9,250	9,200	8,850	9,000	8,850							
Trade, Transportation, and Utilities	5,700	5,700	5,675	5,500	5,550	5,500							
Other Private Service-Providing	3,500	3,550	3,525	3,350	3,450	3,350							
Government	3,775	3,775	3,800	3,800	3,800	3,600							
Federal Government	1,750	1,750	1,775	1,775	1,775	1,775							
State and Local Government	2,025	2,025	2,025	2,025	2,025	1,825							

Benchmark year 2021, quarter 1, rev. 7/15/2022

Equal Opportunity Employer/ Program available in alternative format/ reasonable accommodations: 602-771-1110, TDD 1-800-367-8939

Nonfarm Employment

Prepared in Cooperation with the U.S. Department of Labor, Bureau of Labor Statistics

Arizona Office of Economic Opportunity

2022

Yavapai County(Prescott MSA)

	JAN	FEB	MAR	APR	MAY	JUN	JUL	AUG	SEP	OCT	NOV	DEC	AVG
Total Nonfarm	67,500	68,000	67,900	68,400	68,500	67,500							
Total Private	57,100	57,200	57,100	57,500	57,600	57,600							
Goods Producing	10,600	10,800	10,700	10,700	10,900	11,000							
Mining and Construction	6,700	6,900	6,800	6,800	6,900	7,000							
Manufacturing	3,900	3,900	3,900	3,900	4,000	4,000							
Service-Providing	56,900	57,200	57,200	57,700	57,600	56,500							
Private Service-Providing	46,500	46,400	46,400	46,800	46,700	46,600							
Trade, Transportation, and Utilities	14,100	13,800	13,700	13,700	13,500	13,600							
Information	500	400	400	400	400	400							
Financial Activities	2,500	2,500	2,500	2,500	2,500	2,500							
Professional and Business Services	4,900	5,000	5,000	5,100	5,000	5,000							
Educational and Health Services	12,100	12,100	12,200	12,300	12,200	12,200							
Leisure and Hospitality	10,100	10,300	10,300	10,400	10,700	10,500							
Other Services	2,300	2,300	2,300	2,400	2,400	2,400							
Government	10,400	10,800	10,800	10,900	10,900	9,900							
Federal Government	1,500	1,600	1,600	1,600	1,600	1,600							
State and Local Government	8,900	9,200	9,200	9,300	9,300	8,300							

Benchmark year 2021, quarter 1, rev. 7/15/2022

Equal Opportunity Employer/ Program available in alternative format/ reasonable accommodations: 602-771-1110, TDD 1-800-367-8939

Nonfarm Employment

Prepared in Cooperation with the U.S. Department of Labor, Bureau of Labor Statistics

Arizona Office of Economic Opportunity

2022

Yuma County(Yuma MSA)

	JAN	FEB	MAR	APR	MAY	JUN	JUL	AUG	SEP	OCT	NOV	DEC	AVG
Total Nonfarm	59,200	59,700	59,700	59,700	59,600	58,800							
Total Private	44,700	45,300	45,300	45,300	45,200	44,900							
Goods Producing	6,100	6,200	6,200	6,300	6,300	6,400							
Mining and Construction	3,500	3,500	3,500	3,600	3,600	3,700							
Manufacturing	2,600	2,700	2,700	2,700	2,700	2,700							
Service-Providing	53,100	53,500	53,500	53,400	53,300	52,400							
Private Service-Providing	38,600	39,100	39,100	39,000	38,900	38,500							
Trade, Transportation, and Utilities	12,400	12,500	12,600	12,700	12,600	12,400							
Information	300	300	300	300	300	300							
Financial Activities	2,000	2,100	2,100	2,000	2,000	2,000							
Professional and Business Services	6,800	6,800	6,800	6,700	6,700	6,700							
Educational and Health Services	8,500	8,700	8,600	8,700	8,700	8,700							
Leisure and Hospitality	6,900	7,000	7,000	6,900	6,900	6,700							
Other Services	1,700	1,700	1,700	1,700	1,700	1,700							
Government	14,500	14,400	14,400	14,400	14,400	13,900							
Federal Government	3,700	3,700	3,700	3,700	3,700	3,700							
State and Local Government	10,800	10,700	10,700	10,700	10,700	10,200							

Benchmark year 2021, quarter 1, rev. 7/15/2022

Equal Opportunity Employer/ Program available in alternative format/ reasonable accommodations: 602-771-1110, TDD 1-800-367-8939

About This Publication

Arizona's Workforce is published 14 times a year by the State of Arizona Office of Economic Opportunity (OEO) — 12 times as the monthly Employment Report and twice a year as a two-year Forecast Report. OEO is the state agency responsible for labor market information and demographic data for the state of Arizona.

Material published in *Arizona's Workforce* is in the public domain and can be reproduced without further permission. Appropriate citations are requested.

Next Releases:

July Employment Report, August 18, 2022, 10:00 am

Location: ACA Conference Rooms, Camelback, 100 North 7th Avenue, Phoenix, AZ 85007

Office of Economic Opportunity

Sandra Watson

Director

Doug Walls

Research Administrator

On the web: <https://laborstats.az.gov/>

Phone: 602-771-2222

To be placed on the *Arizona Workforce* email distribution list, or to send feedback or questions, contact:

labor.info@azstats.gov

— Equal Opportunity Employer/Program —

Under Titles VI and VII of the Civil Rights Act of 1964 (Title VI & VII), and the Americans with Disabilities Act of 1990 (ADA), Section 504 of the Rehabilitation Act of 1973, and the Age Discrimination Act of 1975, the Department prohibits discrimination in admissions, programs, services, activities, or employment based on race, color, religion, sex, national origin, age, and disability. The Department must make a reasonable accommodation to allow a person with a disability to take part in a program, service or activity. For example, this means if necessary, the Department must provide sign language interpreters for people who are deaf, a wheelchair accessible location, or enlarged print materials. It also means that the Department will take any other reasonable action that allows you to take part in and understand a program or activity, including making reasonable changes to an activity. If you believe that you will not be able to understand or take part in a program or activity because of your disability, please let us know of your disability needs in advance if at all possible. To request this document in alternative format or for further information about this policy, contact the Department of Economic Security, Division of Developmental Disabilities ADA Coordinator at 602 542-6825 ; TTY/TDD Services: 7-1-1.

This page left intentionally blank.